



**King County**

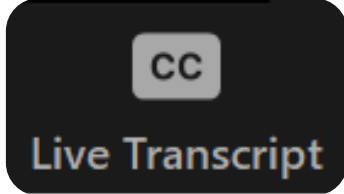
**International Airport**

Boeing Field

# BFI 2024 Summer Construction Projects Update Tenant Community Engagement

March 28, 2024

## Using Zoom

- Click  to turn on captions.
- Participants are automatically muted
- Use the Q&A chat box to ask questions and make comments

# Meeting agenda

Introductions

Taxiway A11 Updates

Airfield Electrical Phase III

Stormwater Phase III

Runway 14L / 32R Updates

ACAP Accreditation Level 3



**King County**  
International Airport  
Boeing Field



**King County**

**International Airport**

Boeing Field

# Taxiway A11 Project Overview

# Introductions of Speakers

Ray Ryan

AECOM, Project  
Manager



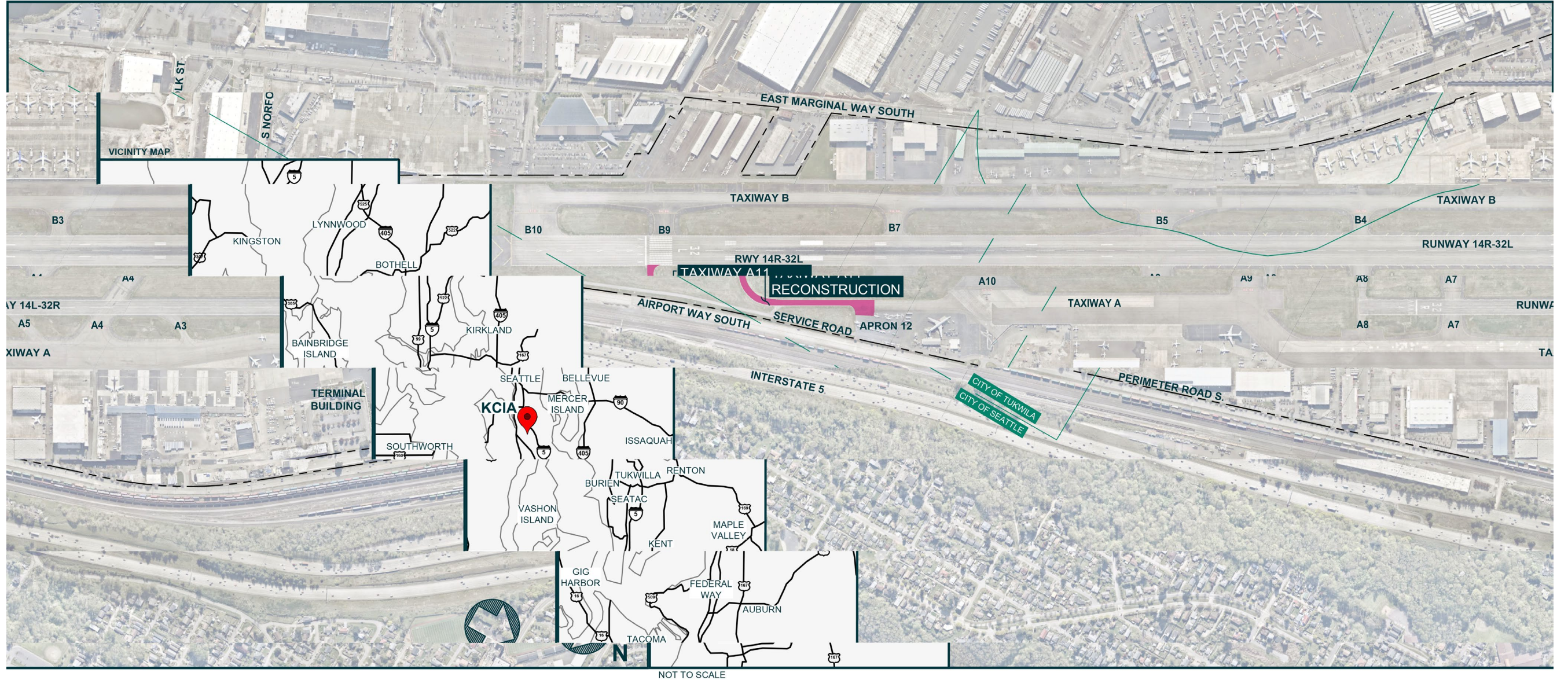
Daizsa Faust

S&A, Associate



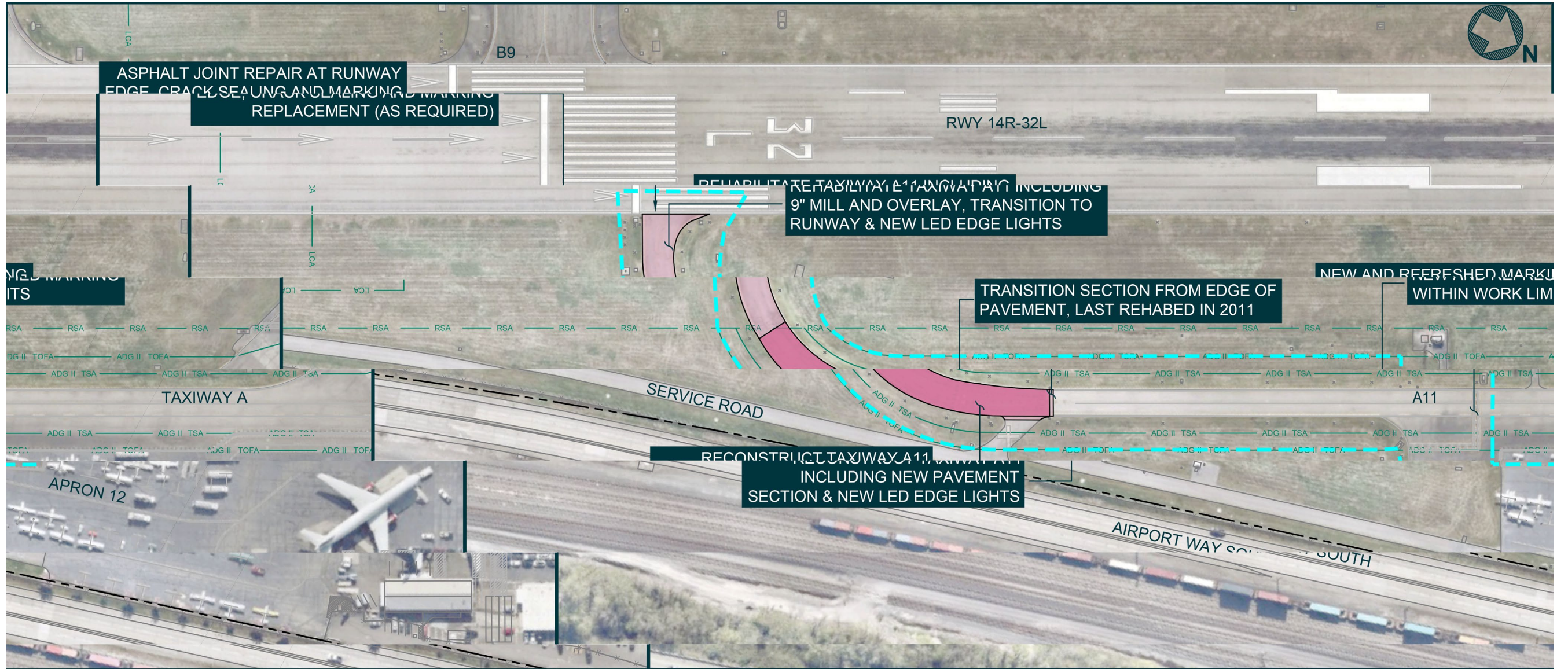


# Project Area



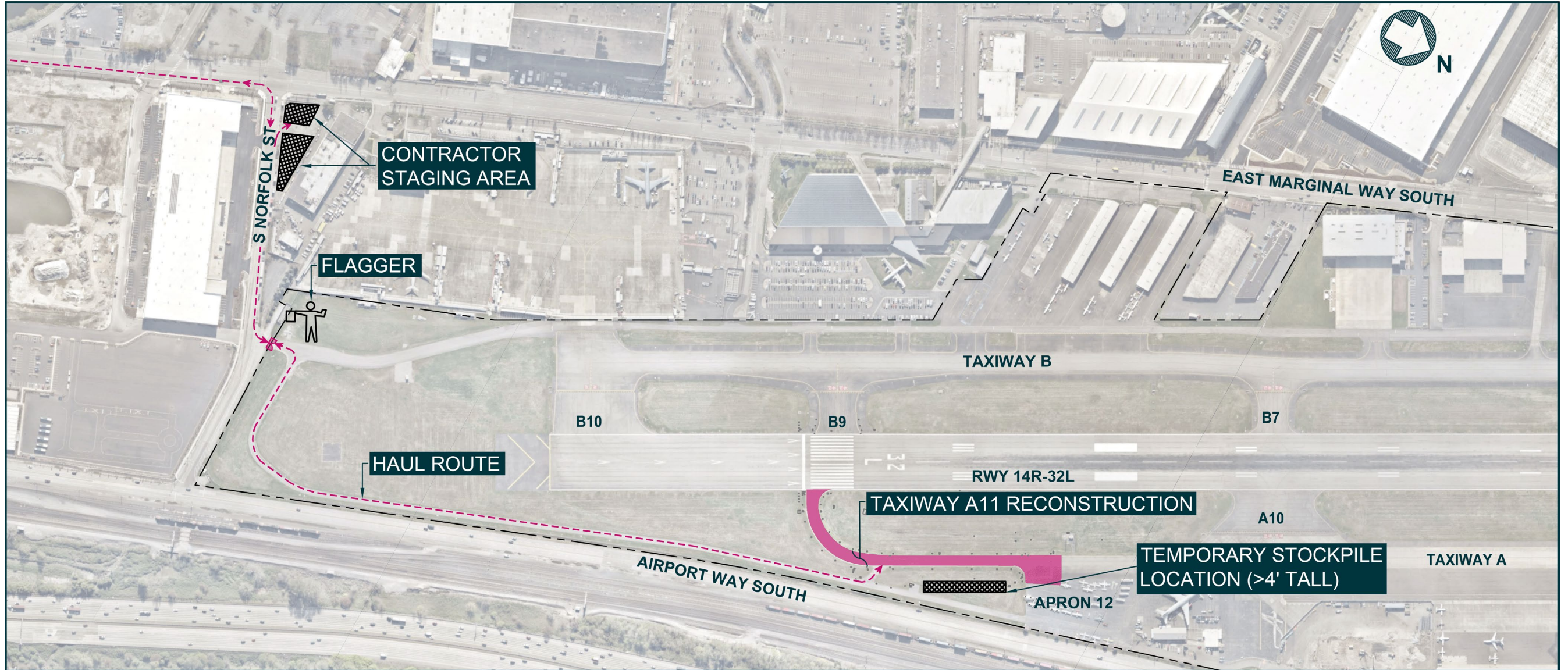


# Project Scope





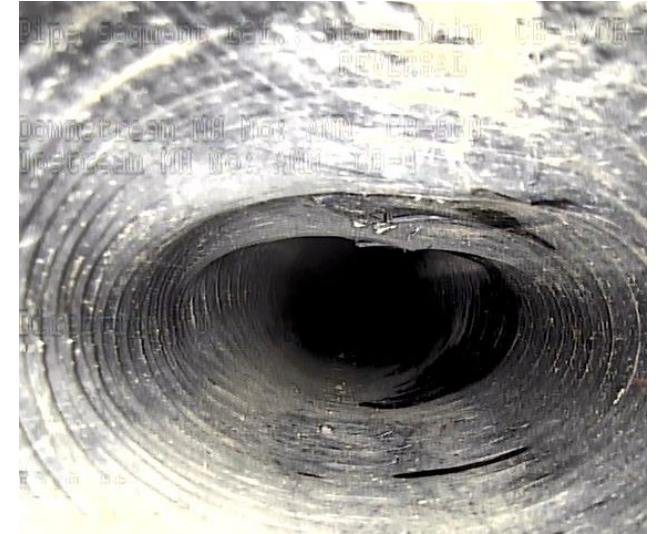
# Project Construction Haul Route



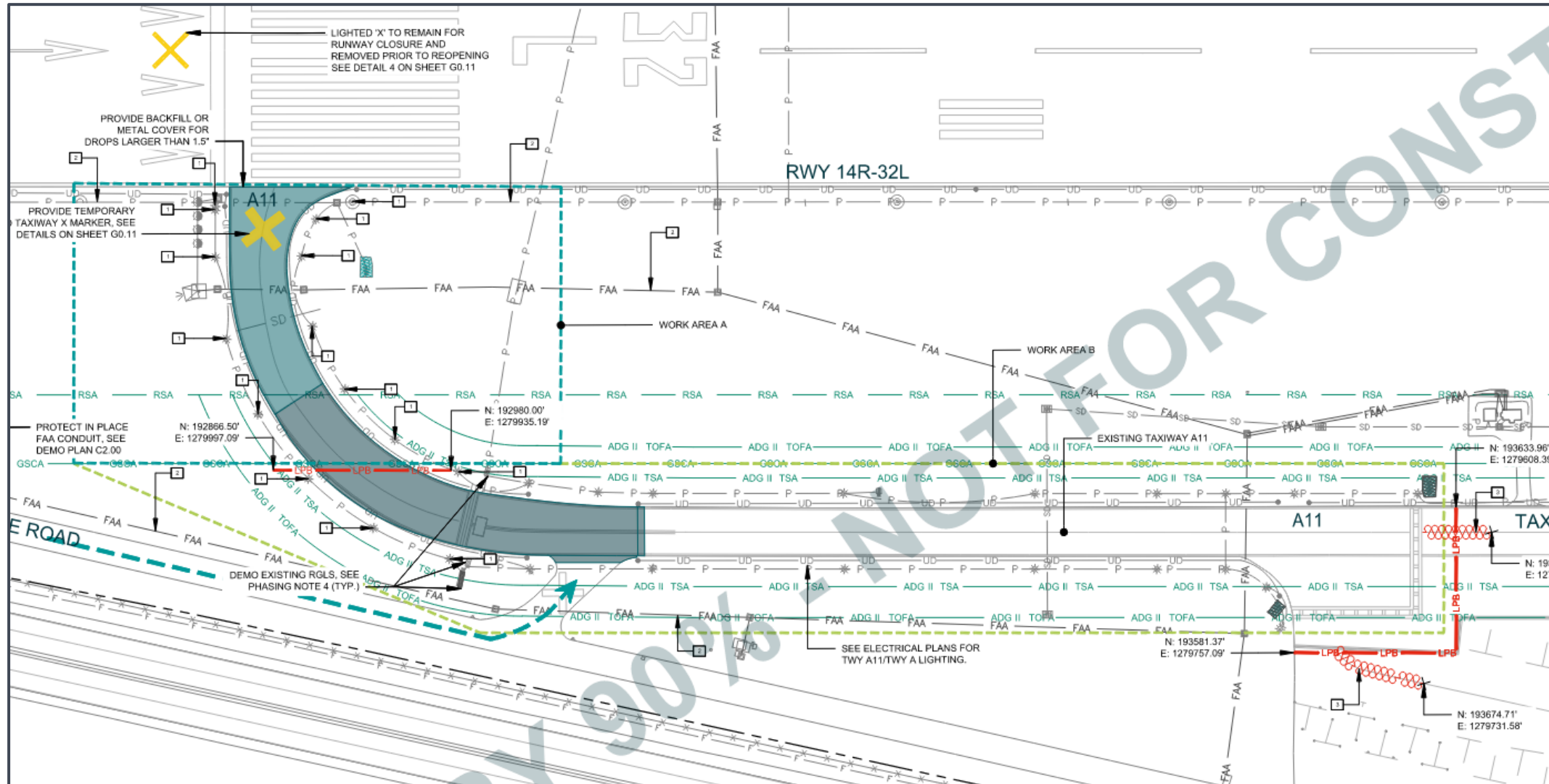


# Project Scope Updates

1. No longer replacing pavement underdrains after further investigation. Only completing isolated repair(s) as needed.
2. Removed asphalt shoulders due to budget constraints.
3. Replacing edge light fixtures only, wiring/conduits to remain.
4. Added temporary stockpile adjacent to work area.
5. Project phasing removed. Completed in single phase/sequence due to Glide Slope Critical Area.



# Project Sequence of Work



1. Close Taxiway A11 to operations for 60 Calendar Days.
2. Complete 'Work Area A' with Runway 14R-32L closed during night-time hours (Thurs.-Sunday, hours vary).
3. Complete 'Work Area B' (concurrently with 'A') outside GSCA during normal work hours (Mon.-Friday 7:00-5:00).
4. Complete 'Substantial Completion' walk-through/punchlist and stop work for asphalt cure-period (30 days).
5. Complete final markings, reopen Taxiway A11.



## Current Status of Sustainability Efforts

1. Hosted an Eco-Charrette to discuss potential sustainability strategies in alignment with King County Sustainable Infrastructure Scorecard and begin the collaborative approach for successful integrative design process. *August & November 2023*
2. Completed Sustainable Infrastructure Scorecard Assessment
3. Established Key Sustainability Strategies
4. Preparing 100% Scorecard and Construction & Demolition (C&D) Diversion Plan
5. Identifying the next action items that need to coordinate with other Project members.
  - Public outreach/events (3) and alignment with ESJ plans
  - Person(s) responsible and documentation needed for each credit



# Key Sustainability Strategies

## 1. Community Involvement and Equity & Social Justice

- Community engagement plans in alignment with King County's Equity Impact Review (EIR) Tool & King County's Equity and Social Justice Strategic Plan, offer multi-lingual project information materials and a website
- Local workforce involvement and training program

## 2. Integrative Process: Leadership, Team and Stakeholder Involvement

- Eco-Charrette - team alignment on sustainability strategies and Sustainable Infrastructure Scorecard Platinum award
- Regular sustainability updates and discussion during Design Coordination Meetings

## 3. Resource Use and Generation

- Energy and water consumption reduction goals during operations and construction
- **85%** waste diversion and local sourcing of materials **(01 74 19)**

## 4. Preserve the Natural Environment

- Erosion and Sedimentation Best Management Practices (BMPs) during construction
- Avoid or mitigate disturbances to surrounding vegetation

## 5. Reduce Greenhouse Gas Emissions and Maximize Resilience

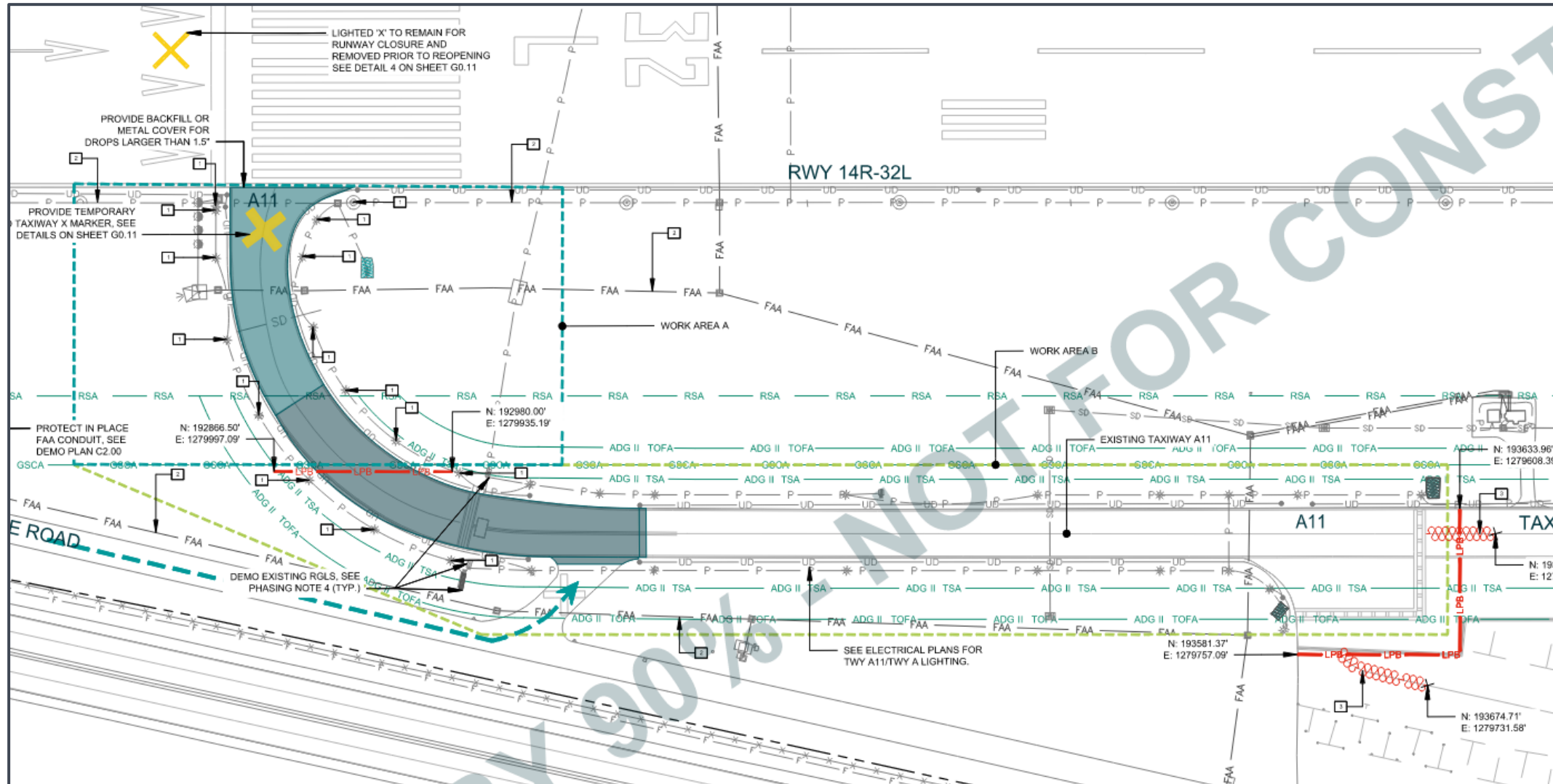
- Account for project's lifecycle GHG emissions (evaluated/specified LED fixtures)
- Maximize resilience through selection of long lasting, durable materials and O&M staff input



ENVISSION™



# Project Schedule



1. Bidding: April/May 2024
2. Construction Duration: 60 Calendar days



**King County**

**International Airport**

Boeing Field

# BFI ELECTRICAL UPGRADES-PHASE III



# Introduction of Speakers

Pete Walker

Senior Aviation Project  
Manager, P.E.

# Project Background

- **Objectives:**

- Improve airfield electrical efficiency
- Improve pilot situational awareness and airfield safety

- **Scope of Work:**

- Install new LED in-pavement and elevated runway guard lights
- Install Airfield Lighting Control Management System (ALCMS)



ATCT CAB, Existing CCR Control Switches

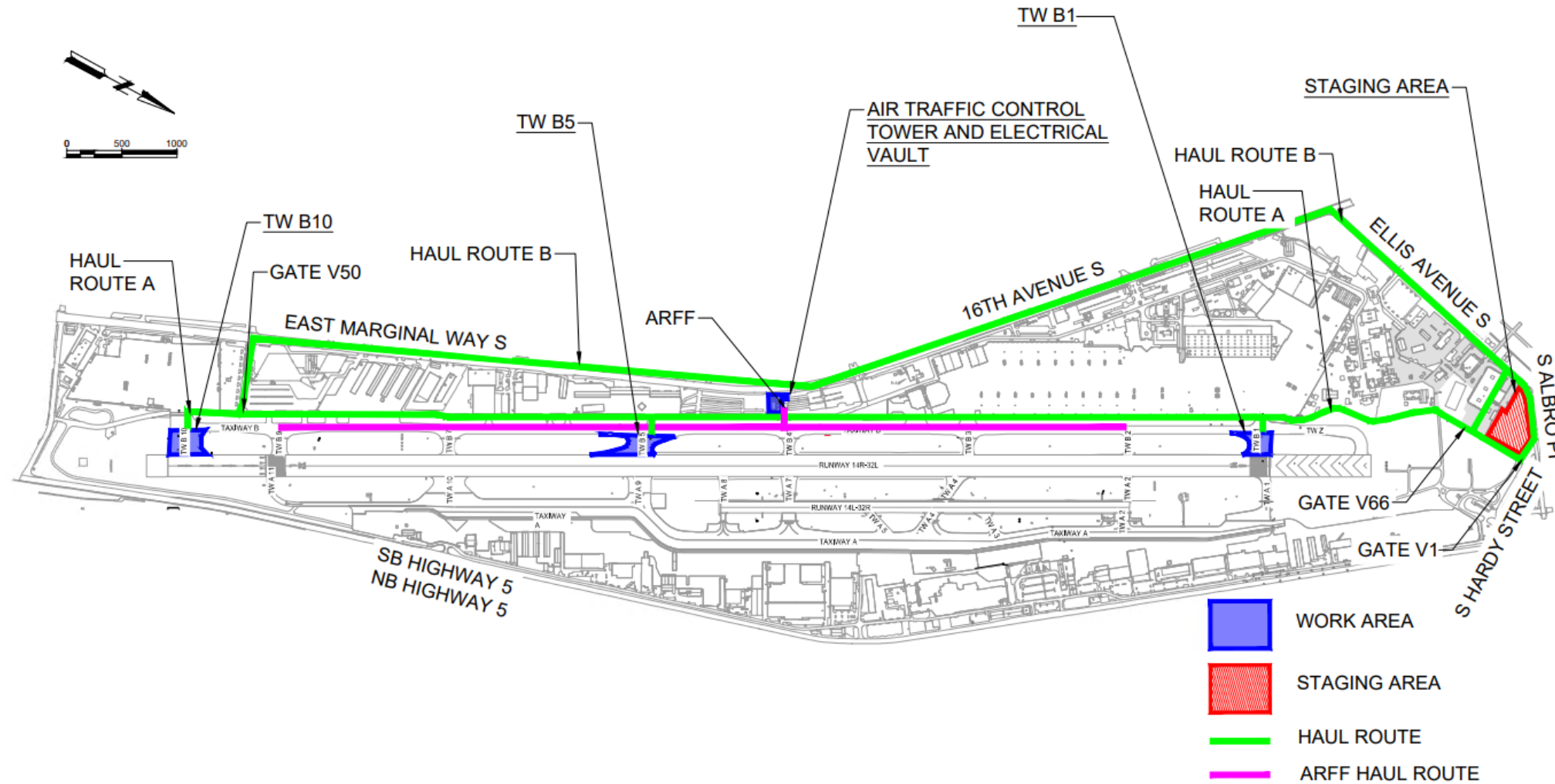


Elevated Runway Guard Light



In-pavement Runway Guard Light

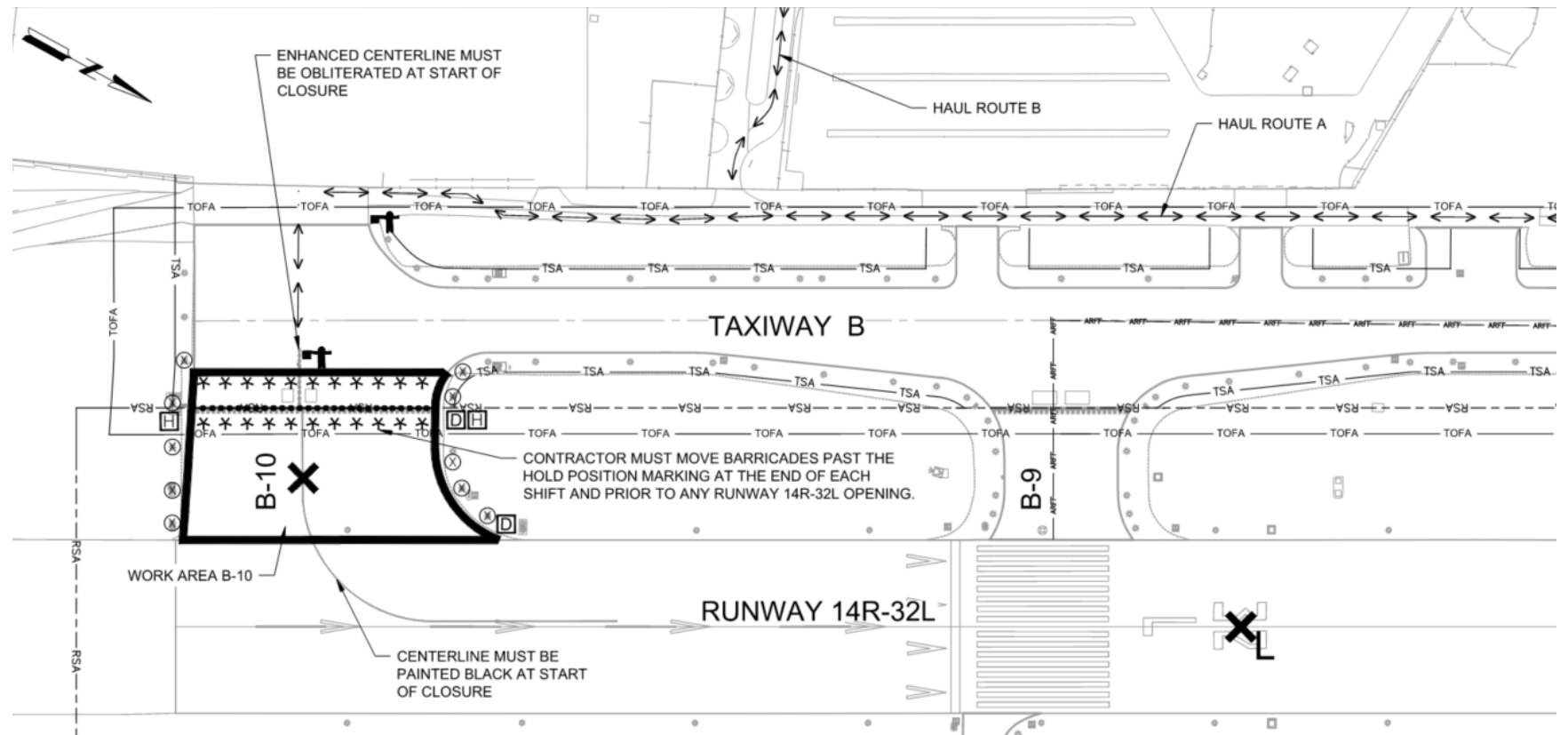
# Construction Haul Routes and Staging Area Exhibit





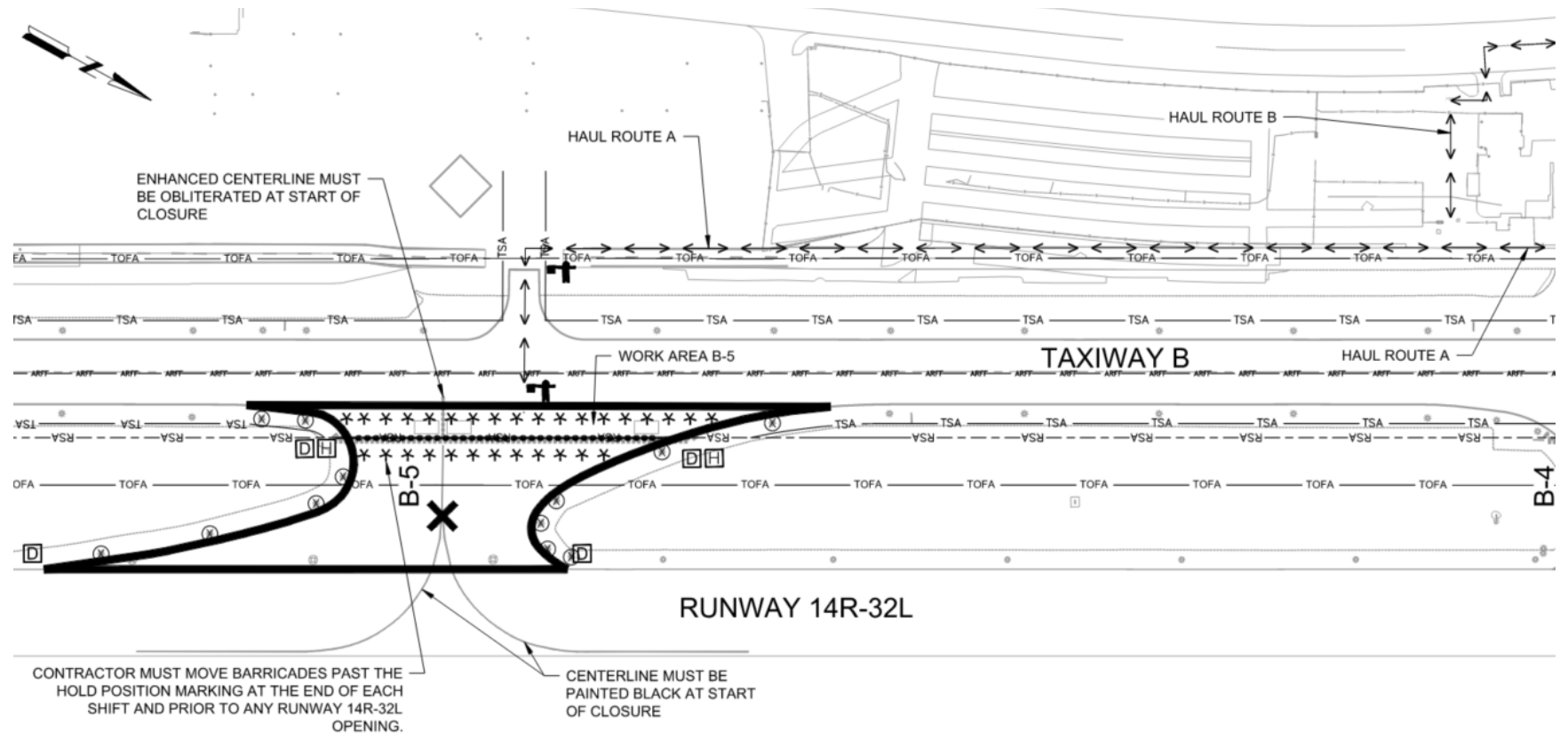
# Construction Sequencing and Impacts – Work Area B-10

- **Work hours:**
  - Work outside the RSA:
    - 7 Days a week: 10:00 pm to 6:00 am
  - Work within the RSA:
    - Thursday 9:45 pm – 3:15 am
    - Friday 9:45 pm – 5:00 am
    - Saturday 9:45 pm – 7:00 am
    - Sunday 9:45 pm – 5:00 am
    - No work allowed Monday – Wednesday
- **Duration:** 28 calendar days



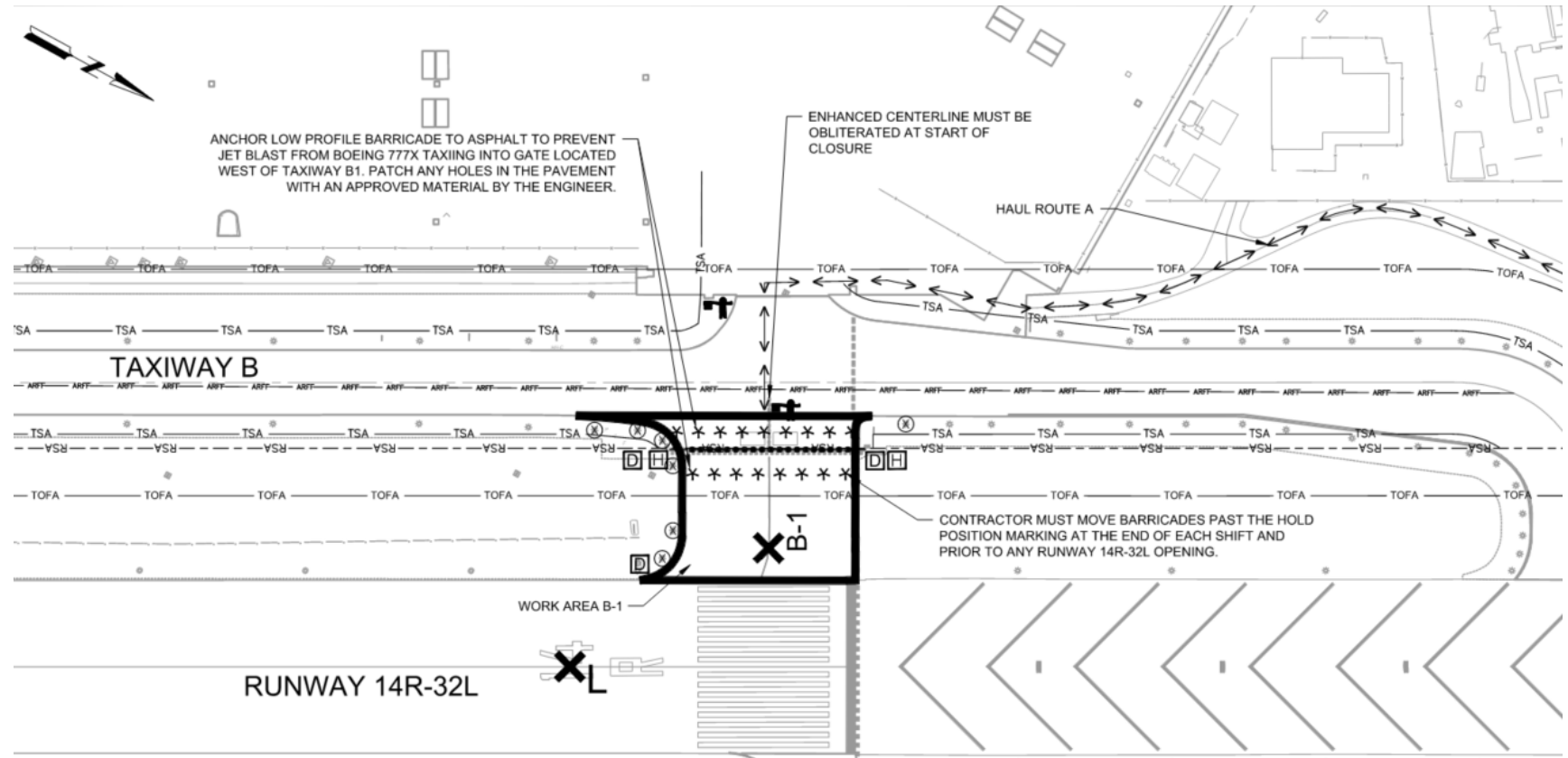
# Construction Sequencing and Impacts – Work Area B-5

- **Work hours:**
  - Work outside the RSA:
    - 7 Days a week: 10:00 pm to 6:00 am
  - Work within the RSA:
    - Thursday 9:45 pm – 3:15 am
    - Friday 9:45 pm – 5:00 am
    - Saturday 9:45 pm – 7:00 am
    - Sunday 9:45 pm – 5:00 am
    - No work allowed Monday – Wednesday
- **Duration:** 28 calendar days



# Construction Sequencing and Impacts – Work Area B-1

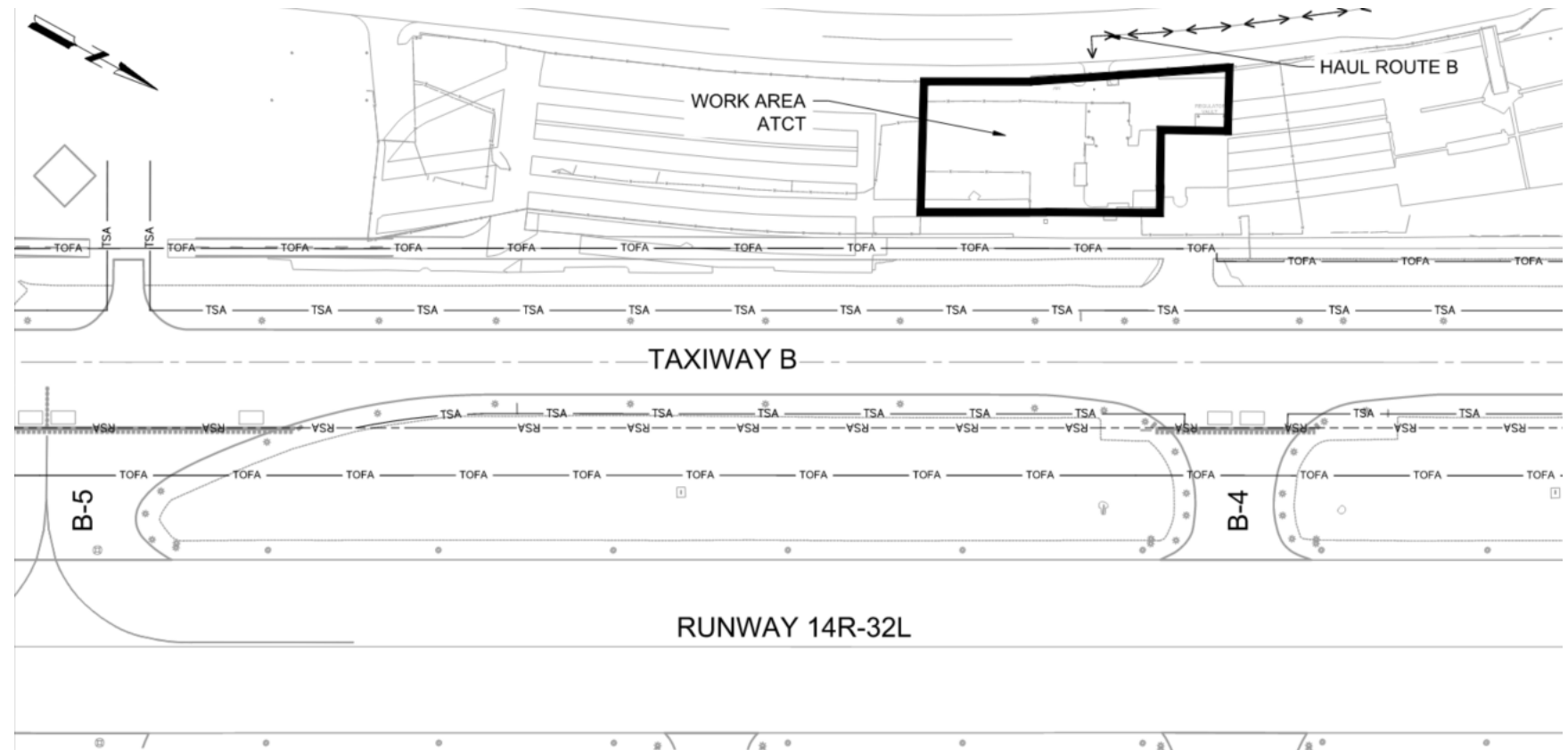
- **Work hours:**
  - Work outside the RSA:
    - 7 Days a week: 10:00 pm to 6:00 am
  - Work within the RSA:
    - Thursday 9:45 pm – 3:15 am
    - Friday 9:45 pm – 5:00 am
    - Saturday 9:45 pm – 7:00 am
    - Sunday 9:45 pm – 5:00 am
    - No work allowed Monday – Wednesday
- **Duration:** 28 calendar days





# Construction Sequencing and Impacts – Work Area ATCT

- **Work hours:**
  - Nighttime 10:00 pm – 6:00 am (work within ATCT cab)
  - Daytime 6:00 am – 6:00 pm (work under the cab of ATCT, FAA parking lot, and electrical vault)
- **Duration:** 28 calendar days





**King County**

**International Airport**

Boeing Field

# STORMWATER REPAIRS - PHASE III

# Introductions of Speakers

Carla Talich, PE  
BHC Consultants, LLC  
Project Manager  
Stormwater Repairs Phase III

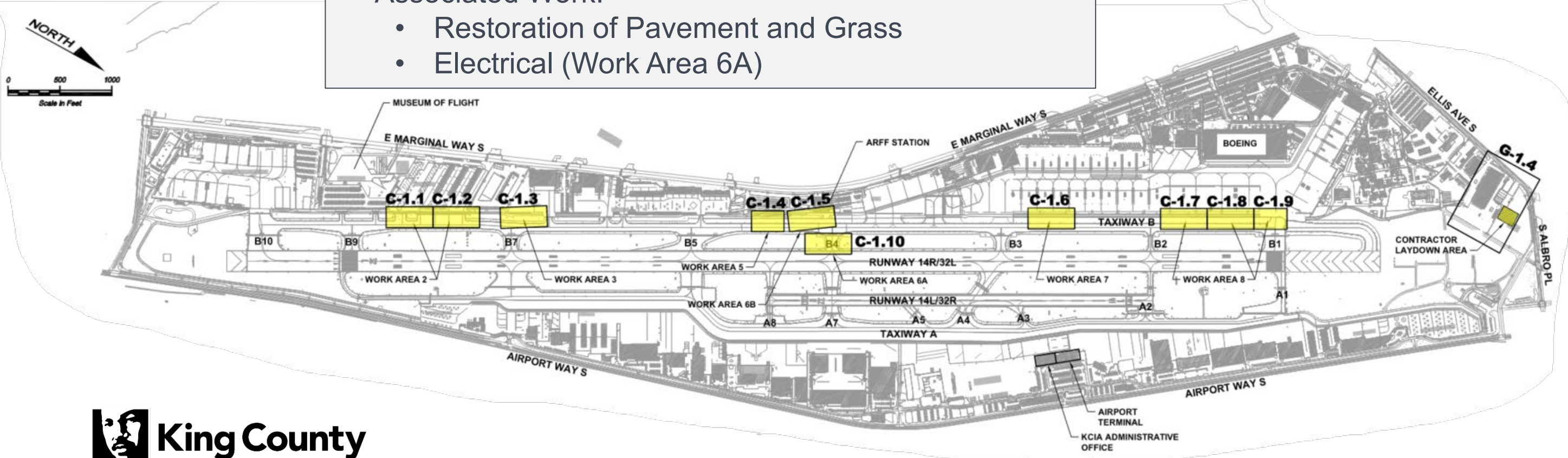




# STORMWATER REPAIRS PHASE III

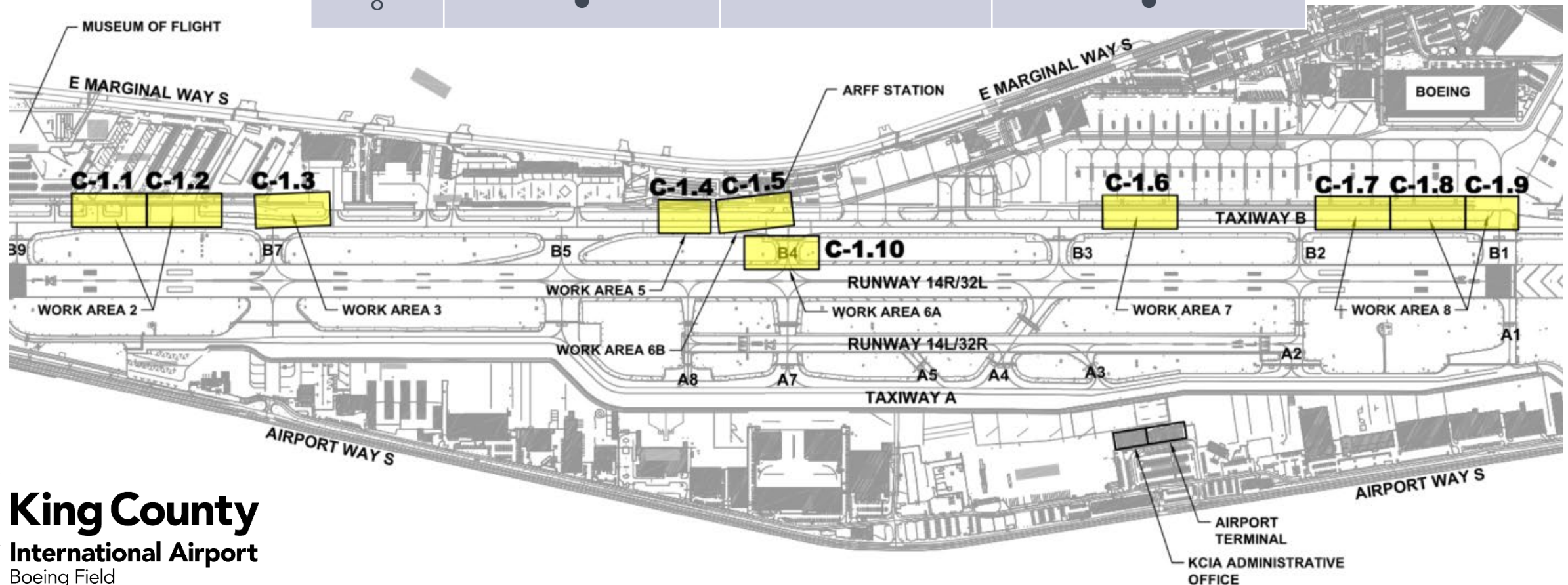
## Summary of Work:

- Seven (7) Work Areas
- Trenchless Pipe Rehabilitation (~ 2,900 linear feet)
- Open Trench Pipe Replacement (~ 100 linear feet)
- Catch Basin Replacement (10 each)
- Associated Work:
  - Restoration of Pavement and Grass
  - Electrical (Work Area 6A)

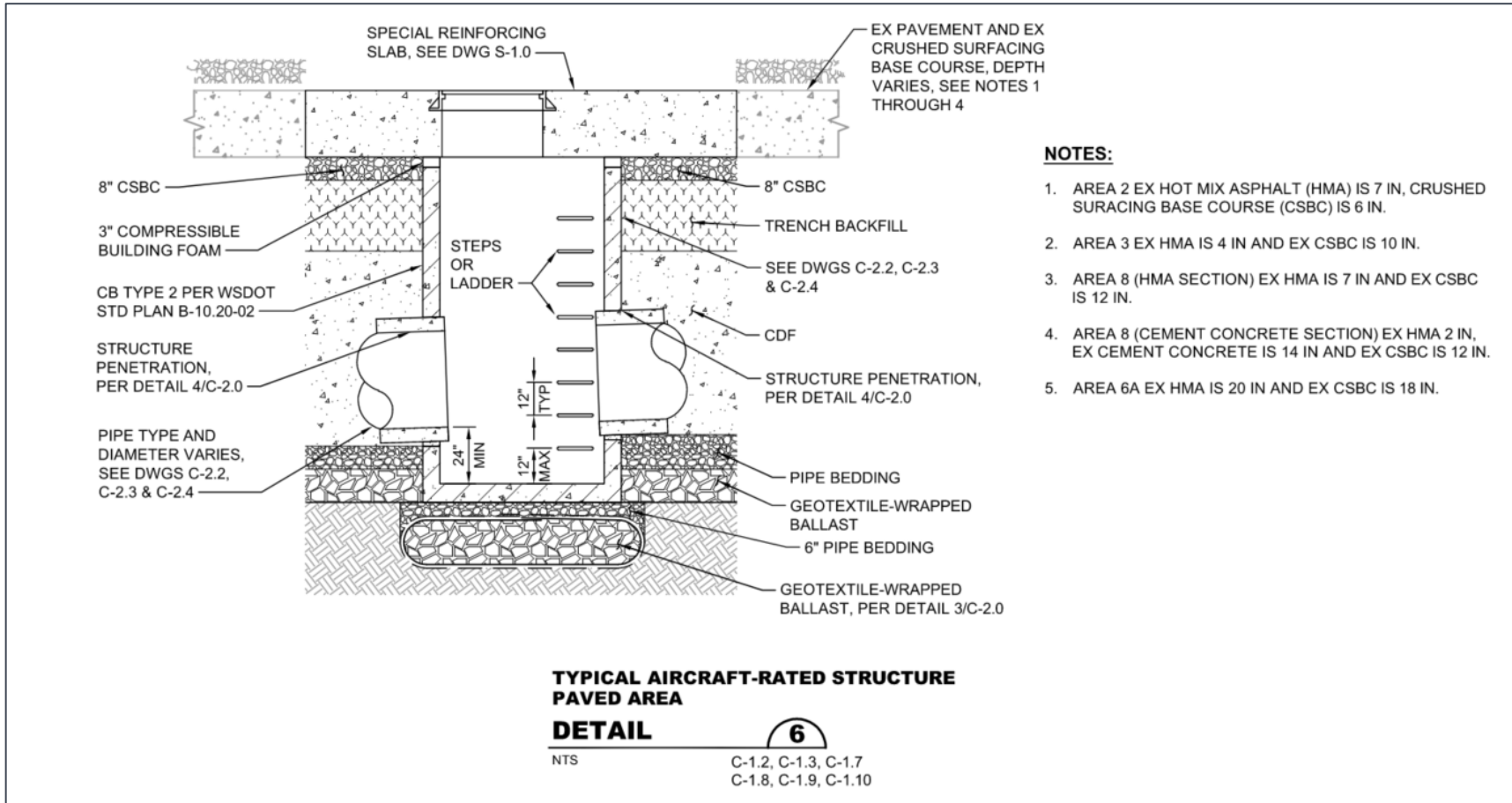


# Planned Repairs by Work Area

Work Area	Trenchless Pipe Rehabilitation	Open Trench Pipe Replacement	Stormwater Catch Basin Replacement
2	●		●
3	●		●
5	●		
6A	●	●	●
6B	●		
7	●		●
8	●		●

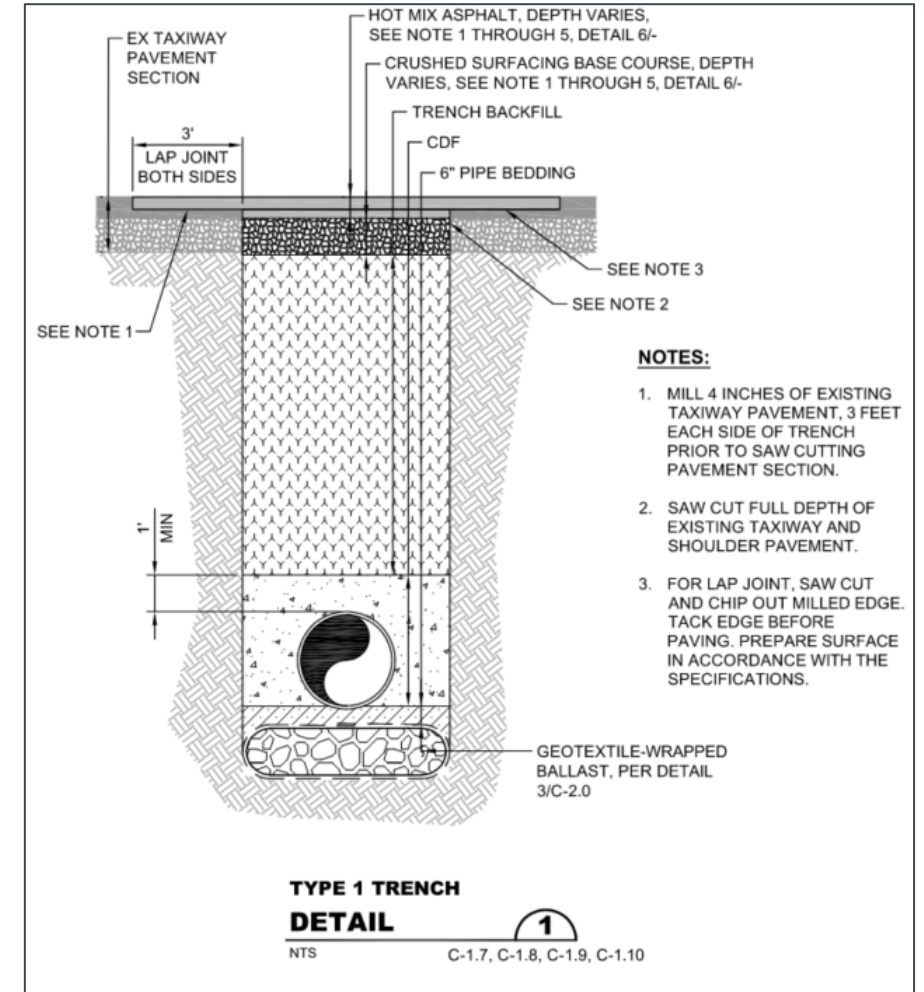


# Typical Details



**NOTES:**

1. AREA 2 EX HOT MIX ASPHALT (HMA) IS 7 IN, CRUSHED SURFACING BASE COURSE (CSBC) IS 6 IN.
2. AREA 3 EX HMA IS 4 IN AND EX CSBC IS 10 IN.
3. AREA 8 (HMA SECTION) EX HMA IS 7 IN AND EX CSBC IS 12 IN.
4. AREA 8 (CEMENT CONCRETE SECTION) EX HMA 2 IN, EX CEMENT CONCRETE IS 14 IN AND EX CSBC IS 12 IN.
5. AREA 6A EX HMA IS 20 IN AND EX CSBC IS 18 IN.

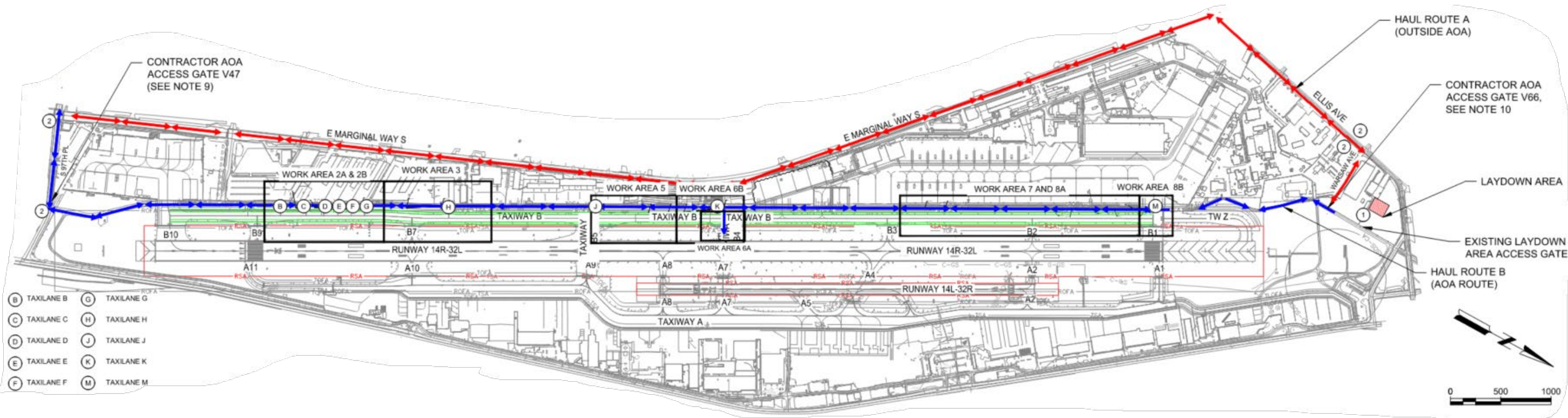


**NOTES:**

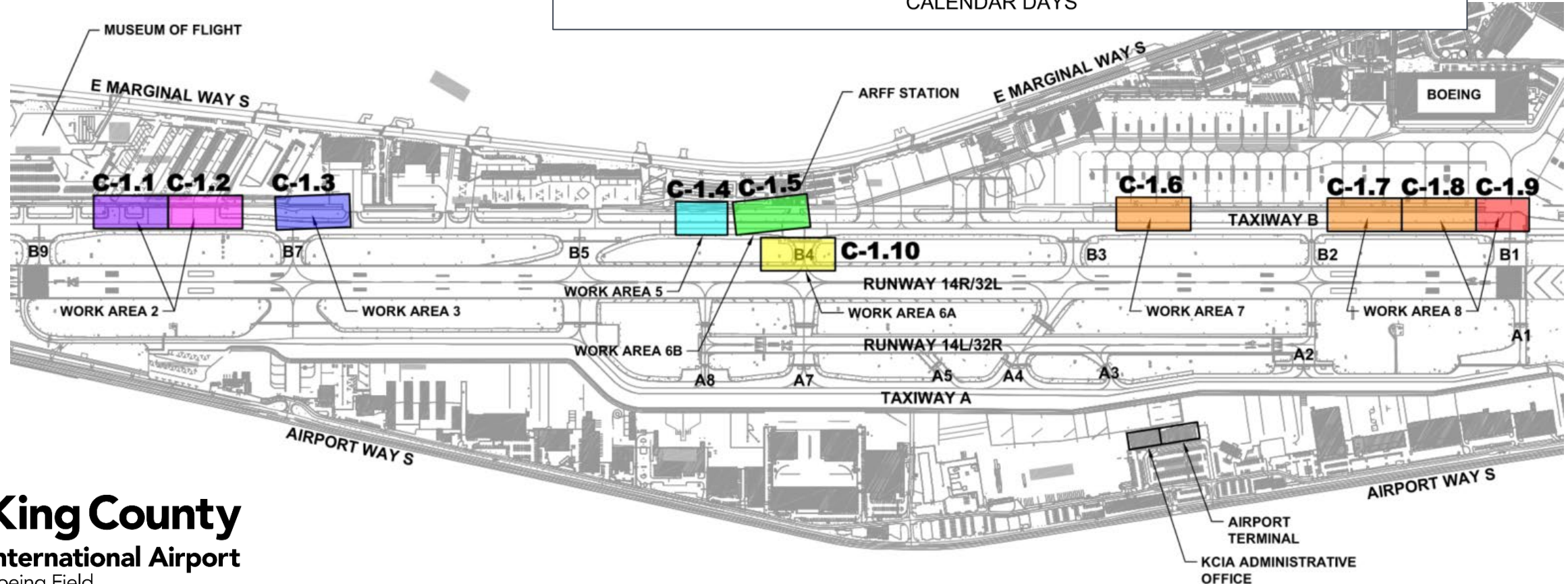
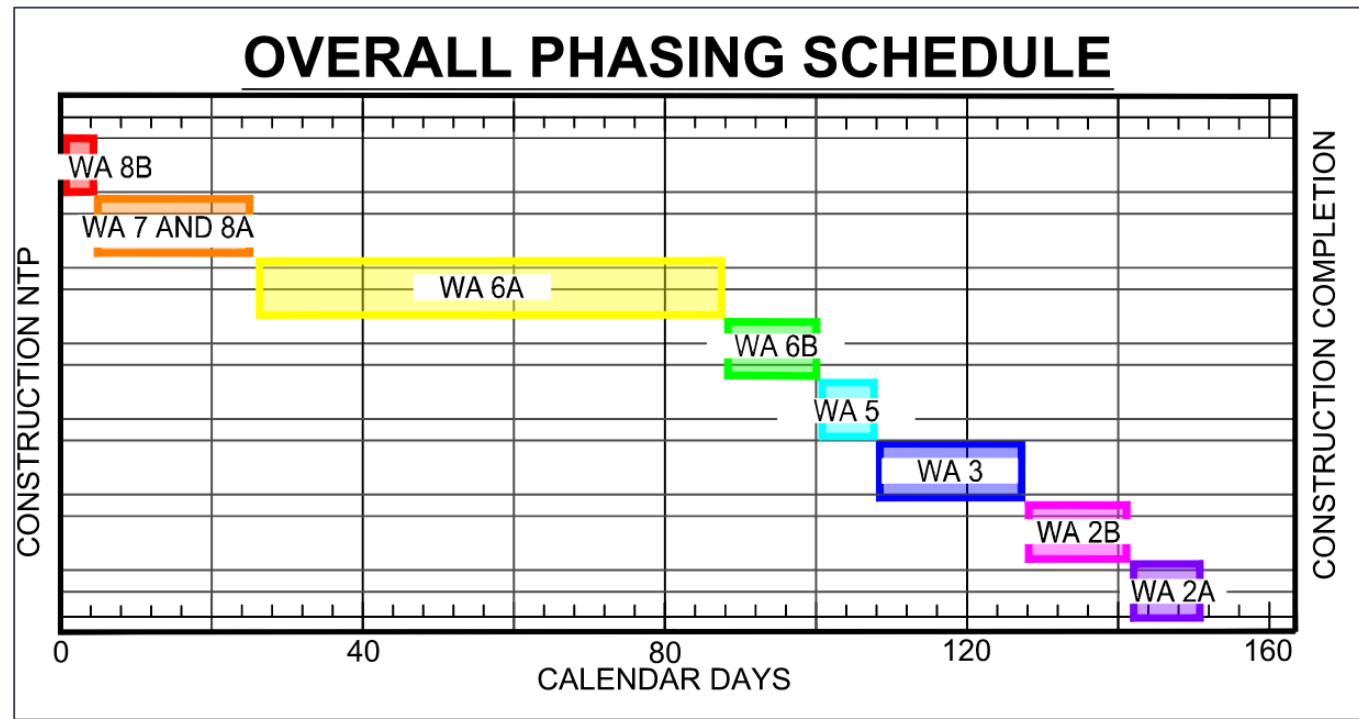
1. MILL 4 INCHES OF EXISTING TAXIWAY PAVEMENT, 3 FEET EACH SIDE OF TRENCH PRIOR TO SAW CUTTING PAVEMENT SECTION.
2. SAW CUT FULL DEPTH OF EXISTING TAXIWAY AND SHOULDER PAVEMENT.
3. FOR LAP JOINT, SAW CUT AND CHIP OUT MILLED EDGE. TACK EDGE BEFORE PAVING. PREPARE SURFACE IN ACCORDANCE WITH THE SPECIFICATIONS.



# Planned Haul Routes



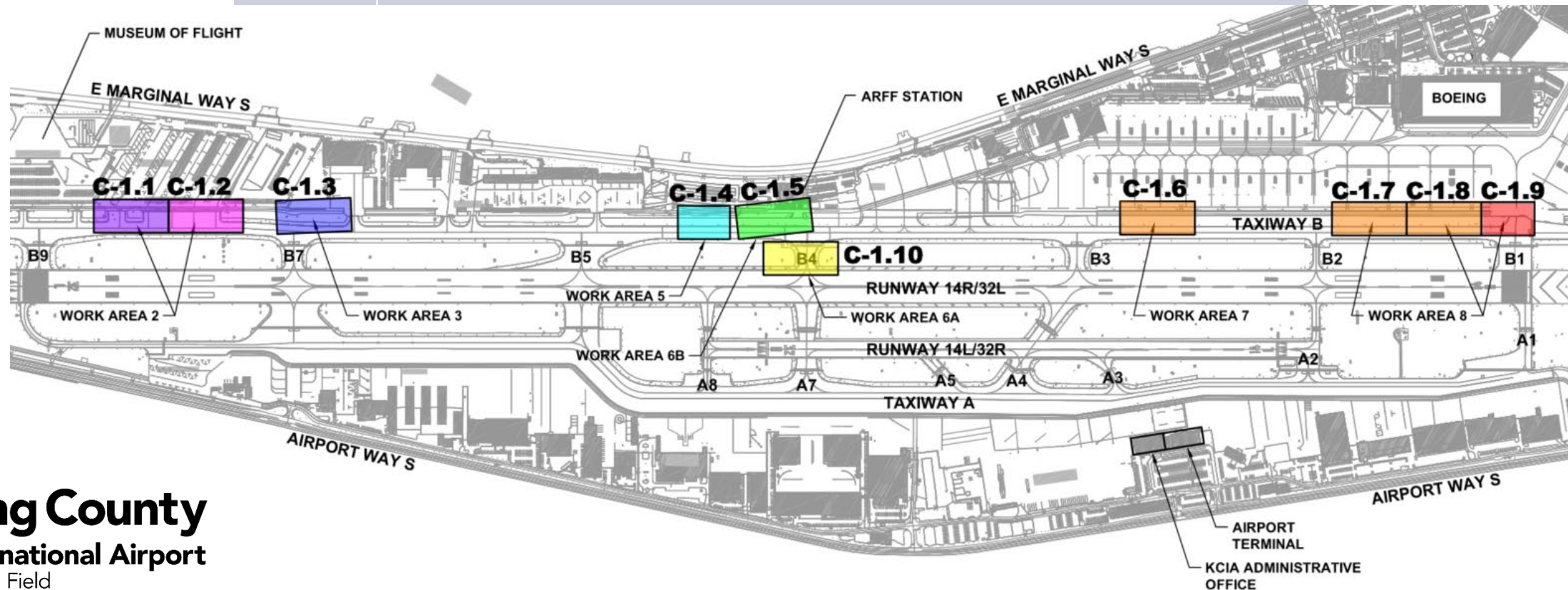
# Phasing Schedule





# Work Hours

Work Area	Allowable Work Hours
2	7 days per week, 24 hours per day
3	7 days per week, 24 hours per day
5	7 days per week, from 2200 to 0600 hours
6A	Night Work Only During Scheduled Runway Closure (Thursday to Sunday)
6B	7 days per week, from 2200 to 0600 hours
7 and 8A	7 days per week, 24 hours per day
8B	7 days per week, 24 hours per day during Shutdown Period of 4 Calendar Days (Long Weekend)







**King County**

**International Airport**

Boeing Field

# 14L-32R Runway Rehabilitation Community Engagement

March 28<sup>th</sup>, 2024

# Introductions of Speakers

Michael  
Mondragon  
Civil Engineer



Tal Glass  
Staff Engineer



Arlando Gilbert  
Project Manager



---

# Project Overview



## Project Schedule

- Bid Opening – April 5<sup>th</sup>, 2024
- Notice to Proceed ~ May 13<sup>th</sup>, 2024
- Phase 1 Substantial Completion ~September 8<sup>th</sup>, 2024
- Phase 2 Substantial Completion ~November 12<sup>th</sup>, 2024
- Envision Certification Application ~December 2024
- Project and Grant Closeout ~Q3 2025

# Project Site



## Construction Access Considerations

- Noise
- Pollution
- Vehicle Emissions

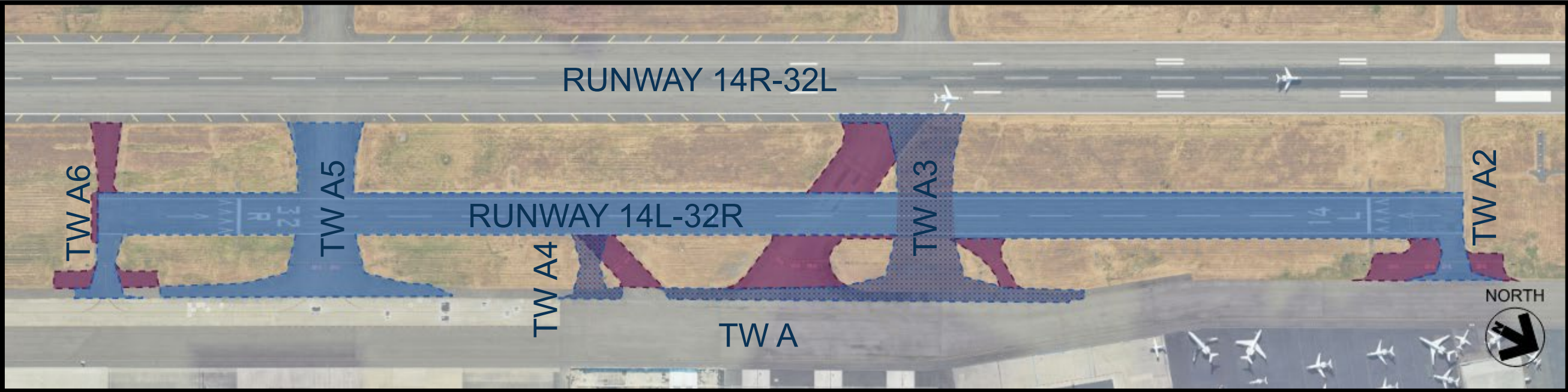


### LEGEND:

-  PROJECT WORK AREA
-  CONTRACTOR HAUL ROUTE
-  AIRPORT TEMRINAL BUILDING
-  CONTRACTOR STAGING AREA
-  ACCESS FROM I5 - S. BOEING ACCESS ROAD



# Project Overview



### LEGEND:

-  PAVEMENT REHABILITATION
-  PAVEMENT RELOCATION
-  DEMOLISHED PAVEMENT

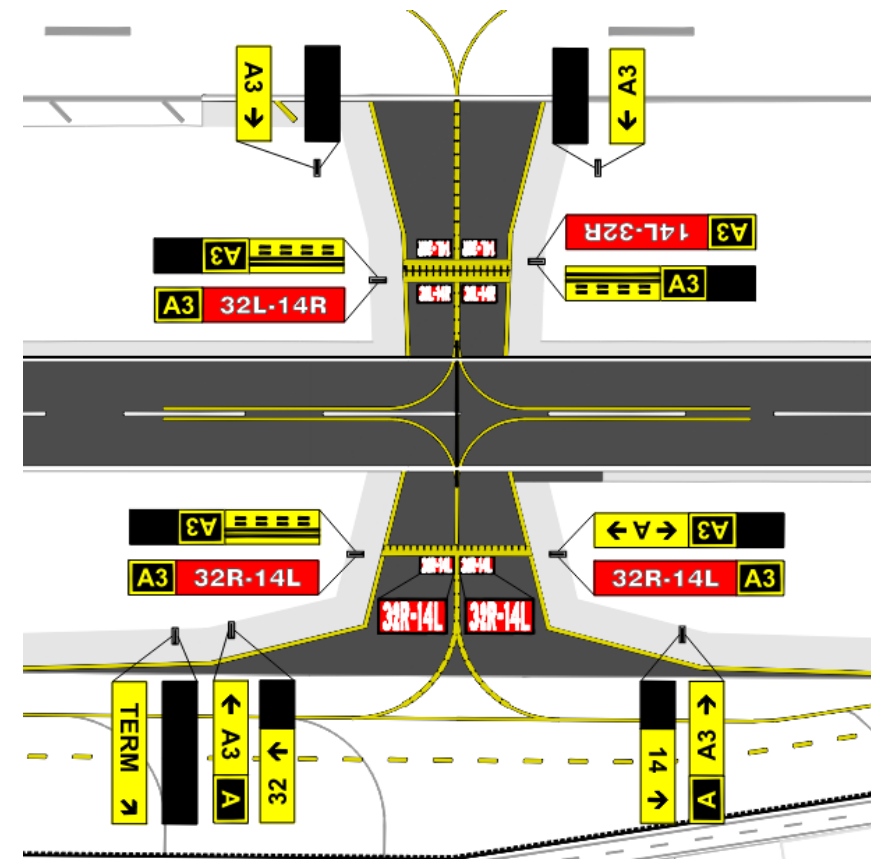
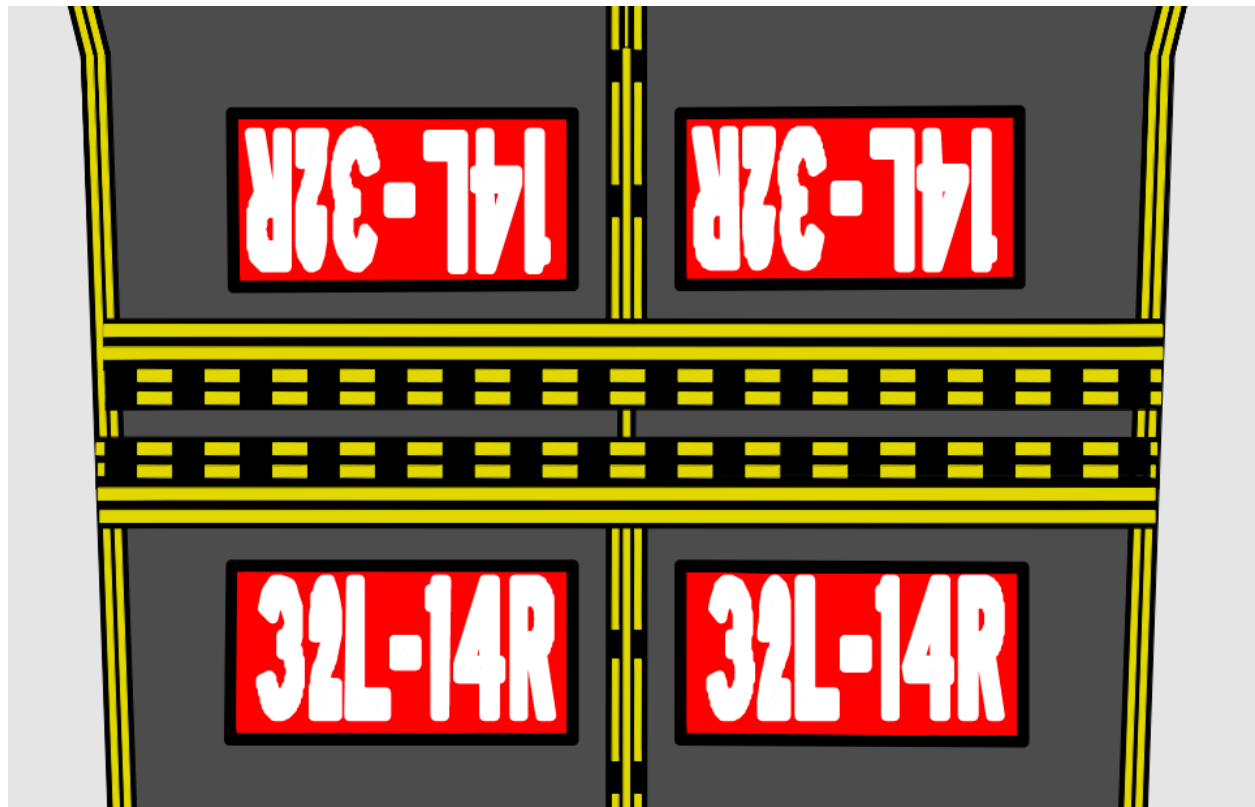
### Primary Changes Since Previous Meeting

- Expanded airfield drainage repairs/replacements
  - High Performance Bioretention Media Swales implemented for water quality.
  - Revised hold bar configuration between runways
  - New Taxiway Names
- Expanded airfield electrical improvements
  - Alternate included for In Pavement Runway Guard Lights

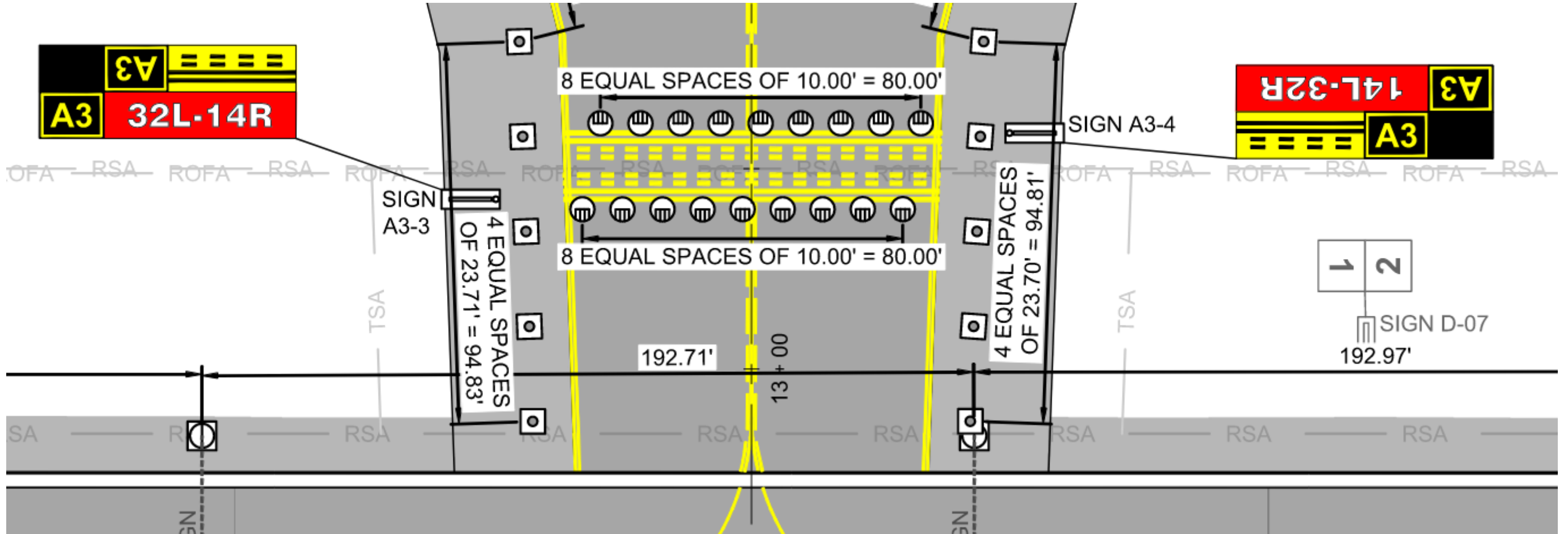




# New marking configurations between runways to increase situational awareness



# Bid Alternate includes in-pavement runway guard lights for additional situational awareness.

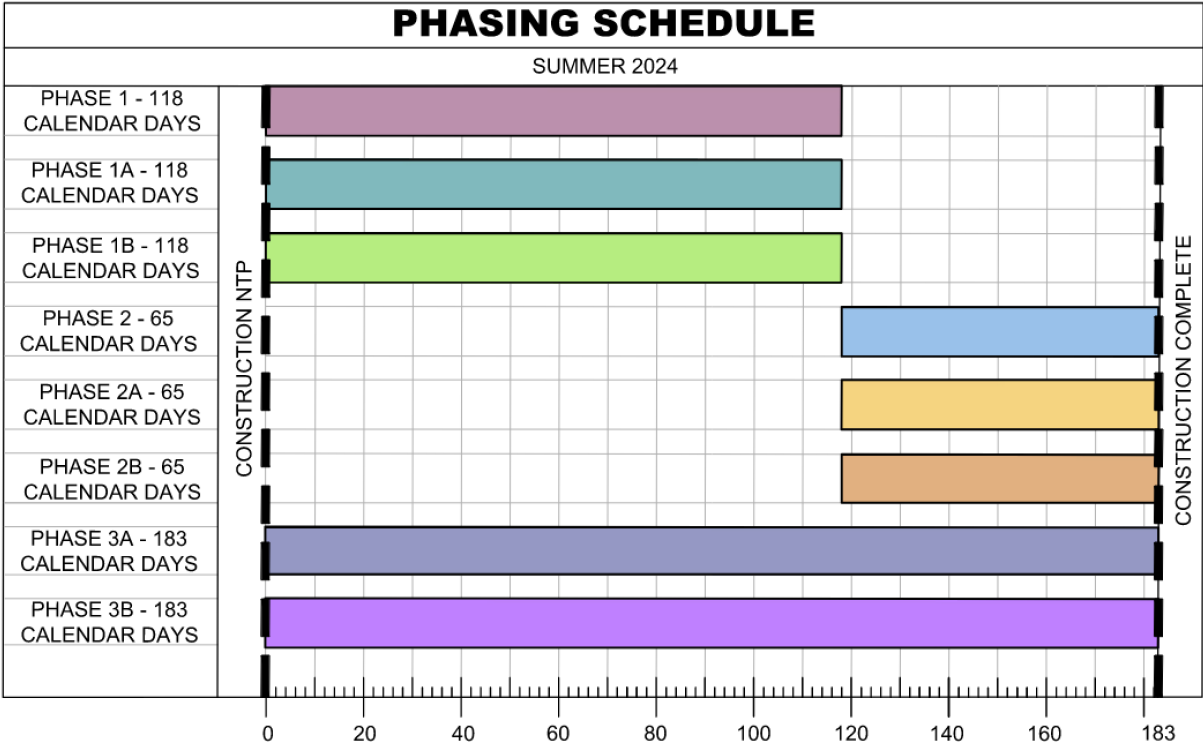
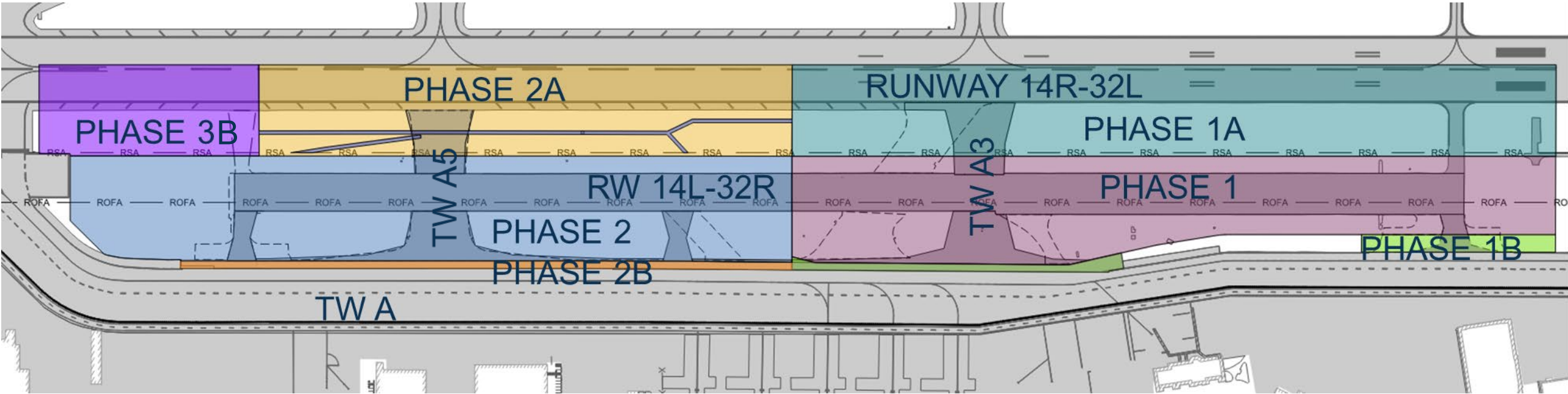


---

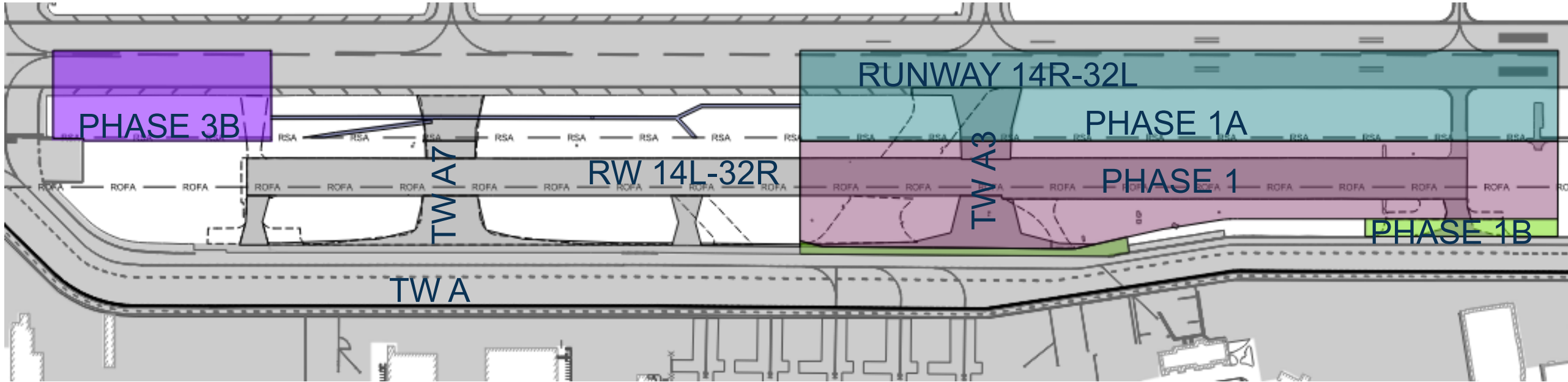
# Project Phasing



# Overall Construction Phasing



# North Construction Phase



### Key Considerations

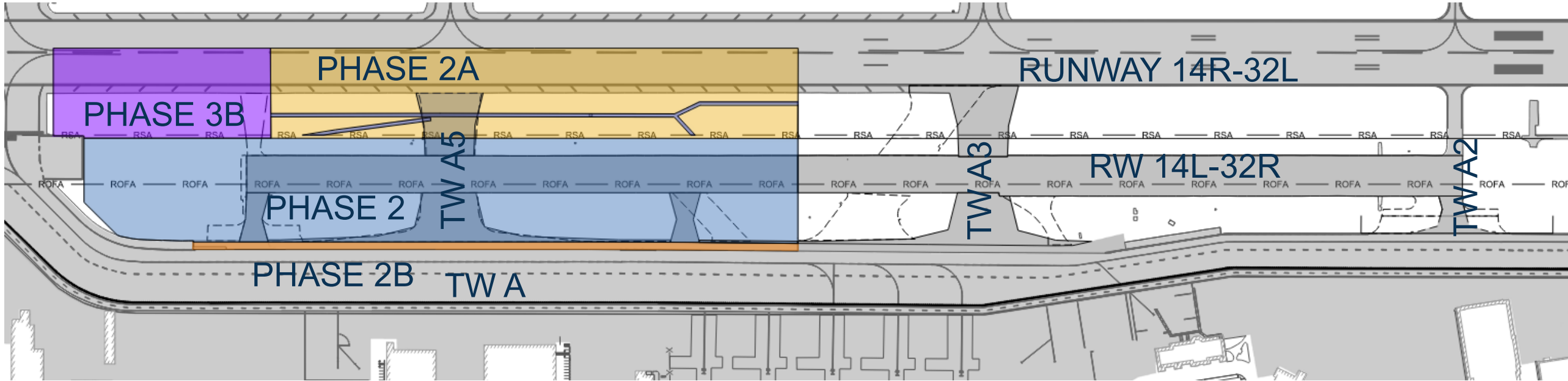
- Active Cross Field Taxiways
  - TW B4/A7
  - TW B5/A9
- Temporary Relocated Centerlines
  - TW A: A8 to UPS Gate 6: ADG IV
  - TW A: UPS Gate 6 to Gate 4: B767-3F or Smaller
  - TW A: UPS Gate 4 to TW A2 – G650 or Smaller

### Tentative Runway 14R-32L Closures (118 Calendar Days)

- Monday: 2145 - 0315
- Tuesday: 2145 - 0315
- Wednesday: 2145 - 0315
- Thursday: 2145 - 0315
- Friday: 2145 - 0500
- Saturday: 2145 - 0700
- Sunday: 2145 – 0500



# South Construction Phase



### Key Considerations

- Active Cross Field Taxiways
  - TW B2/A2
  - TW B3/A3
  - TW B5/A9
- Temporary Relocated Centerlines
  - TW A: A8 to UPS Gate 8: ADG III
  - TW A: UPS Gate 8 to Gate 6: B767-3F or Smaller
  - TW A: UPS Gate 6 to TW A4 – ADG IV

### Tentative Runway 14R-32L Closures (65 Calendar Days)

- Monday: 2145 - 0315
- Tuesday: 2145 - 0315
- Wednesday: 2145 - 0315
- Thursday: 2145 - 0315
- Friday: 2145 - 0500
- Saturday: 2145 - 0700
- Sunday: 2145 – 0500

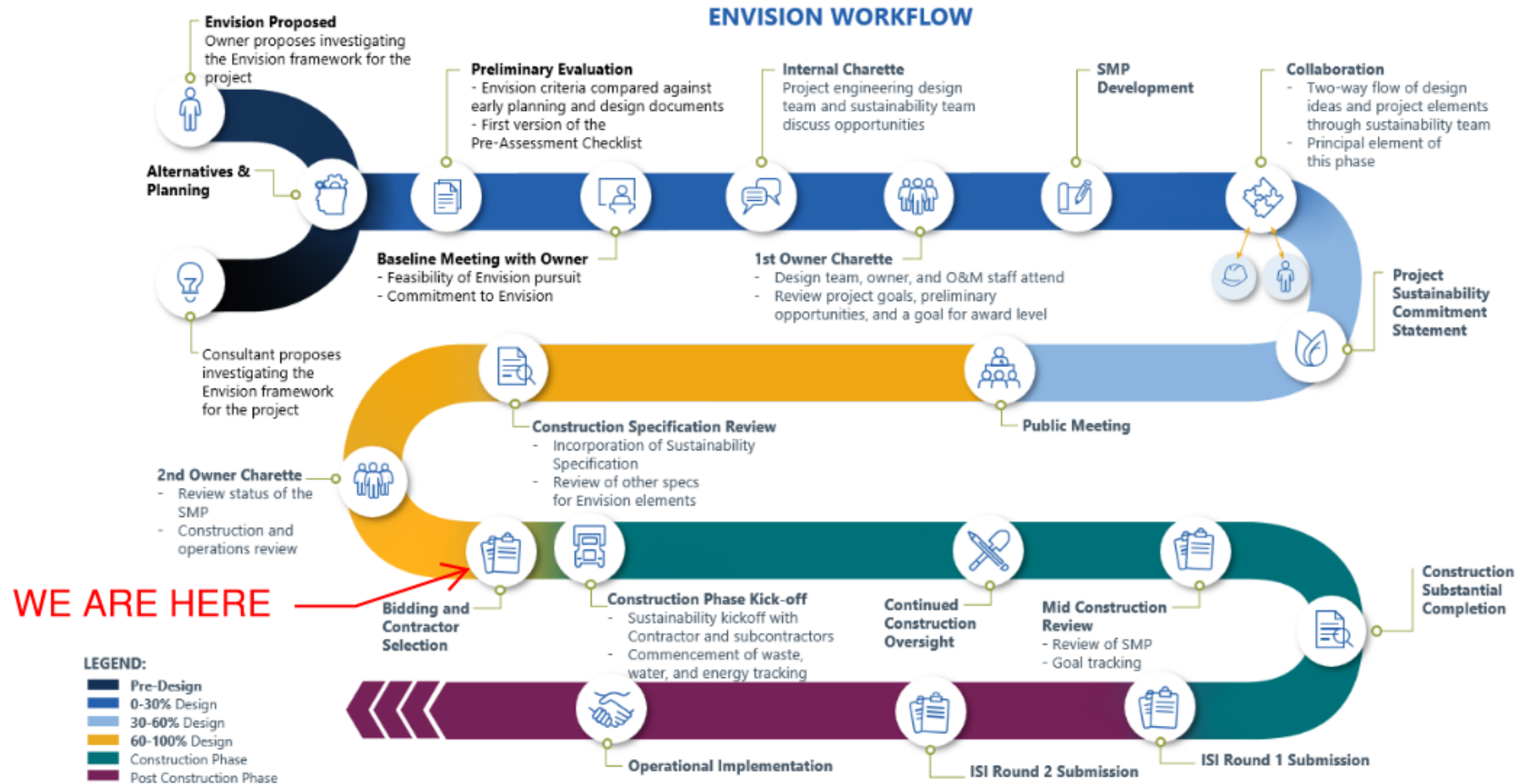




---

# Project Environmental Sustainability

# Envision Roadmap



# Sustainable Project Features

- Use of Recycled Materials
  - Recycled Concrete
  - Recycled Asphalt
  - Balance Project Earthwork
- Switch airfield lighting to LEDs
- 80% Construction Waste Diversion
- Envision Sustainability Project Certification
- Community Engagement







**King County**

**International Airport**

Boeing Field

# Level 3 Airport Carbon Accreditation

Eric Miller, KCIA Capital Project Manager

Rebecca Frohning, WSP Senior GHG Analyst

Jenny Thacker, PRR Associate Director of Facilitation

# What is the Airport Carbon Accreditation Program?

Reducing carbon and increasing airport sustainability



**550**  
airports in the programme

In **87**  
countries across the world

Welcoming **3.6** billion passengers a year

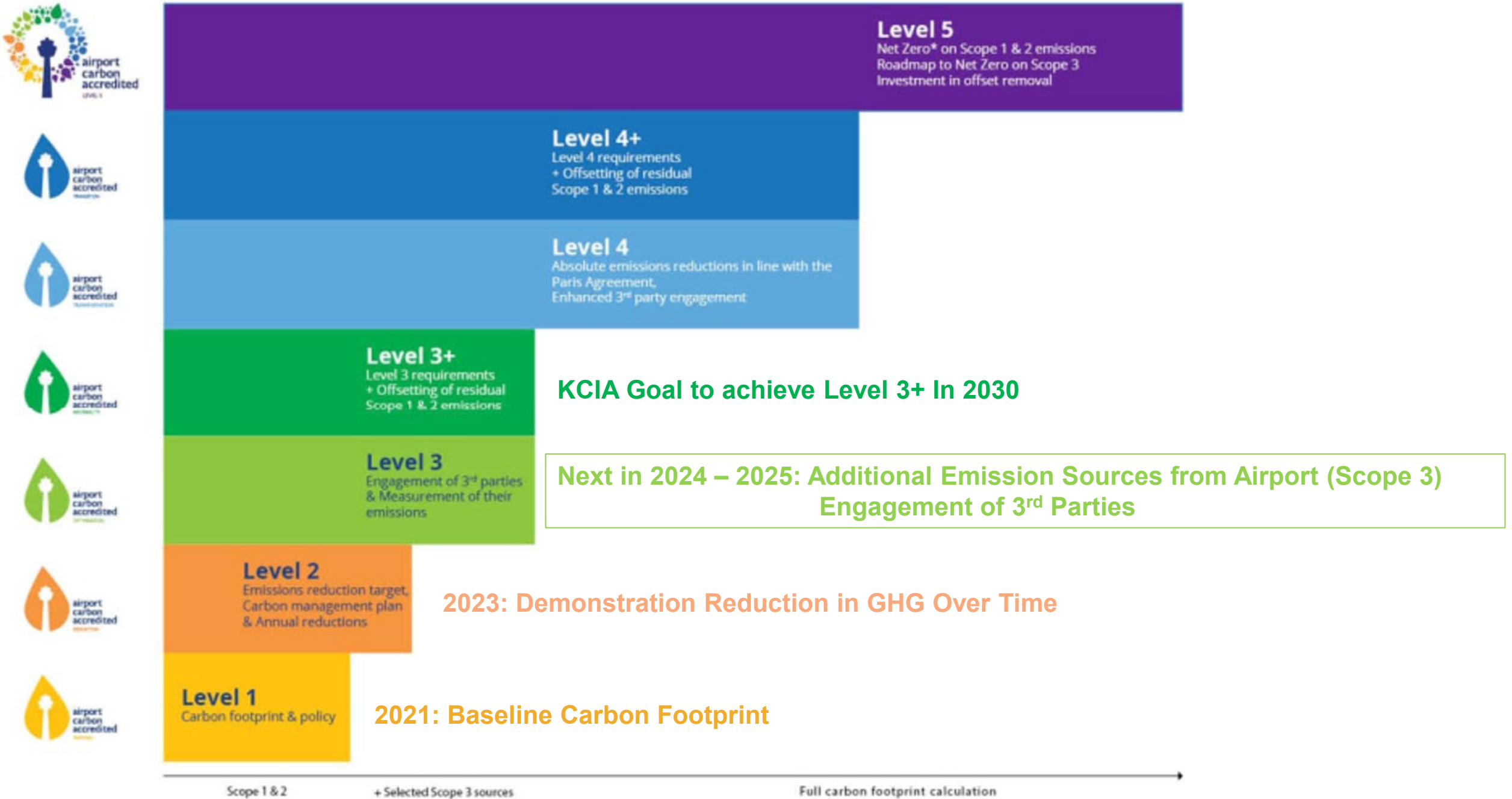
That's **54.8** % of the global air passenger traffic

# What is the Airport Carbon Accreditation Program?

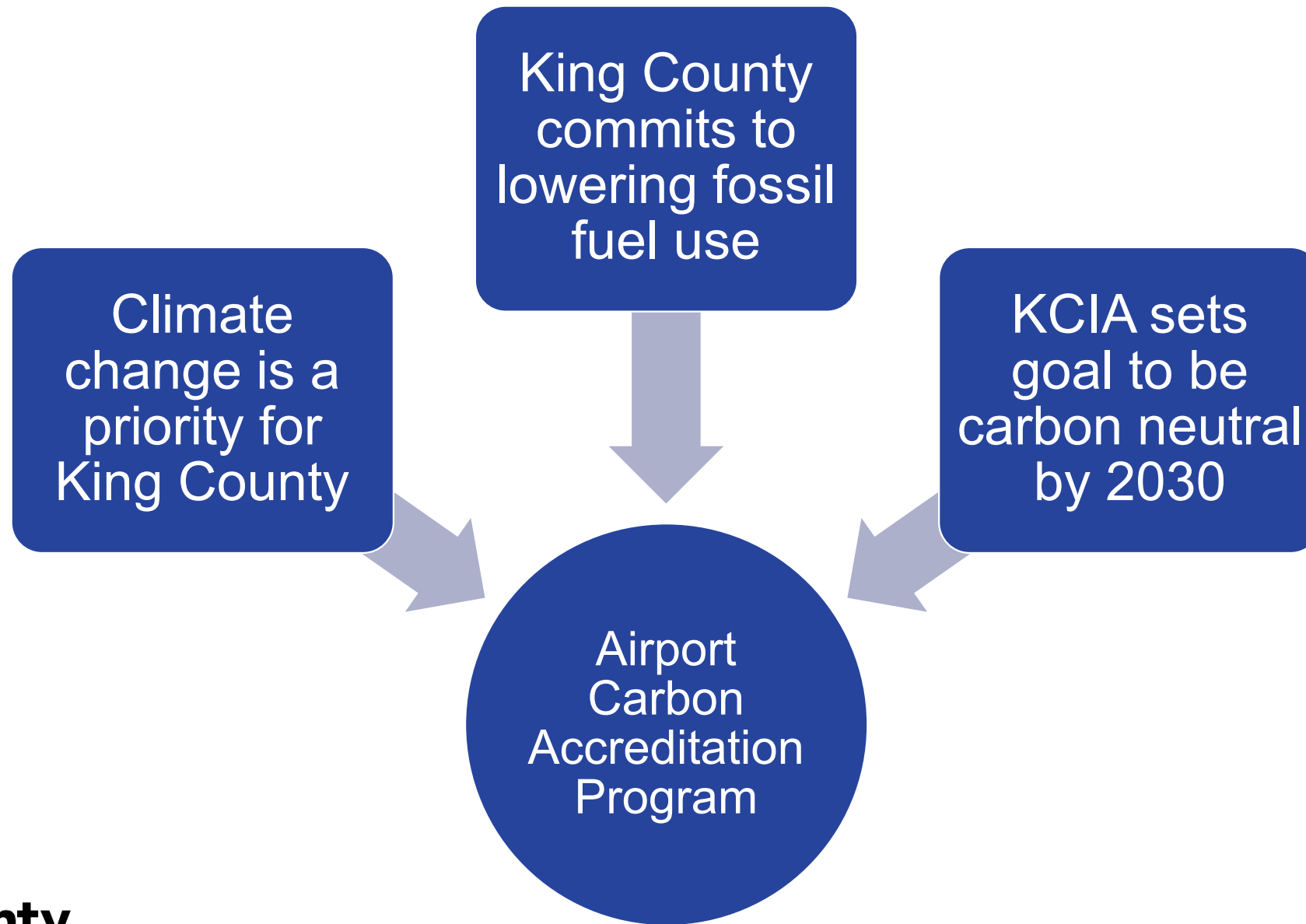




# What has KCIA done so far?



# King County International Airport is Addressing Climate Change



# What does this mean for you?

## We will partner with you to gather data about

Number of onsite employees	Basic information to categorize scale of airport activities
Fuel use	Emissions from vehicles, ground support equipment, emergency generators, boilers
Aircraft related emissions	Landing take-off, APU time, maintenance
Refrigerants, De-icers	Other GHG sources onsite

**Your data will be kept confidential and aggregated to remove identifying features**

## What are the benefits to you?

- **Raise the profile and credibility of your organization**
- **Achieve operational and cost efficiencies**
- **Improve air quality, lessen noise impacts, result in fewer harmful chemicals entering the local storm water system**
- **Positively impact the health and safety of staff**

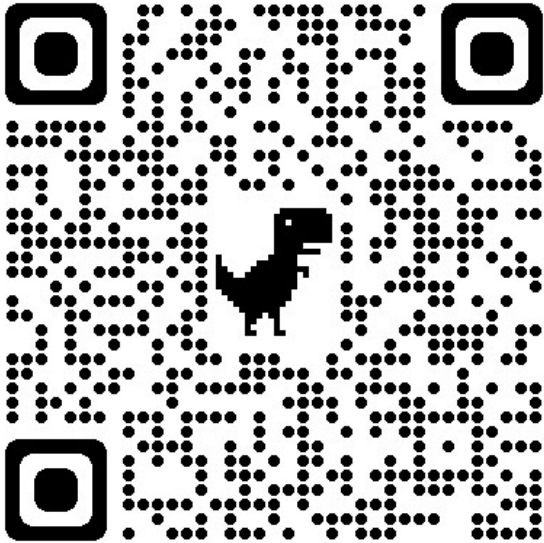
## Next Steps

- **Team will send a request for a meeting to discuss data needs**



# Engagement

Project Public Engagement Website >>>





**King County**  
**International Airport**  
Boeing Field

Thank you!  
Any questions?