



King County

International Airport

Boeing Field

2025 BFI Summer Construction Coordination Meeting

February 13th, 2025

Introductions of Airport Team

John Parrott

David Decoteau

Eric Miller

Matt Sykora

Peter
Dumaliang

Airport Director

Deputy Airport
Director

Capital Project
Manager

Business and
Properties Manager

Project Manager





King County
International Airport
Boeing Field

Meeting Agenda

- Runway 14L / 32R
- Taxiway A11
- Airfield Electrical – In-Pavement Runway Guard Light
- Stormwater Pipe Repair along Taxiway B
- Airport Carbon Accreditation Progress



King County
International Airport
Boeing Field

KCIA-BFI Runway 14L / 32R Rehabilitation

Construction Start Date March 17th, 2025

Runway 14L/32R Rehabilitation

Project Overview

Project Site



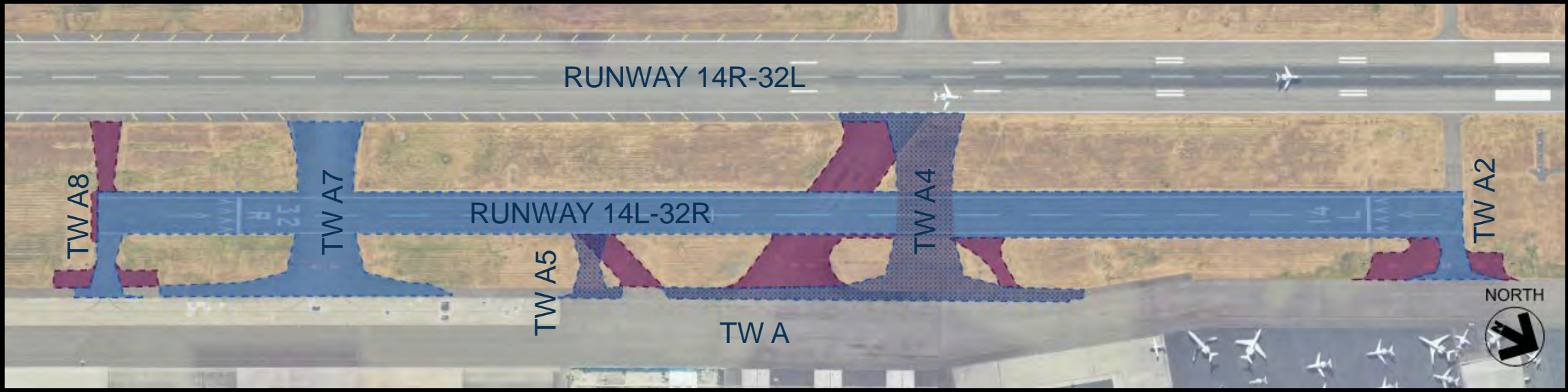
Construction Access Considerations

- Noise
- Pollution
- Vehicle Emissions

LEGEND:

-  PROJECT WORK AREA
-  CONTRACTOR HAUL ROUTE
-  AIRPORT TEMRINAL BUILDING
-  CONTRACTOR STAGING AREA WITH IDENTIFIED
-  ACCESS FROM I5 - S. BOEING ACCESS ROAD

Project Overview



LEGEND:

-  PAVEMENT REHABILITATION
-  PAVEMENT RELOCATION
-  DEMOLISHED PAVEMENT

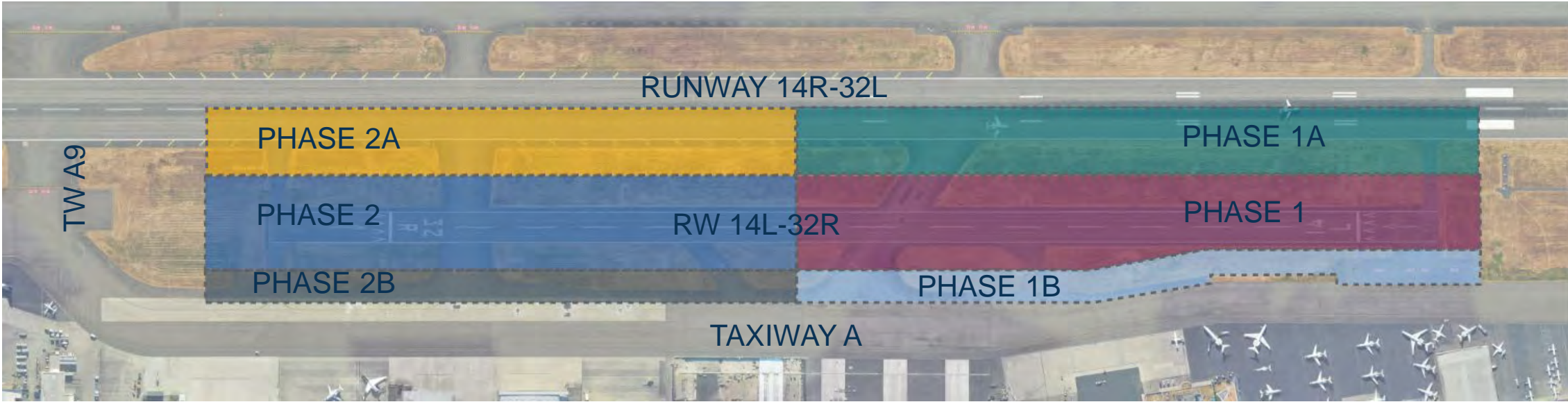
Primary Changes Since Previous Meeting

- Expanded airfield drainage repairs/replacements
 - Targeted Repair/Replacement within RW 14R-32L RSA
 - Replacement with targeted repair within remaining project area
- Expanded airfield electrical improvements
 - LED light fixtures on new cans
 - Targeted conduit repair/replacement

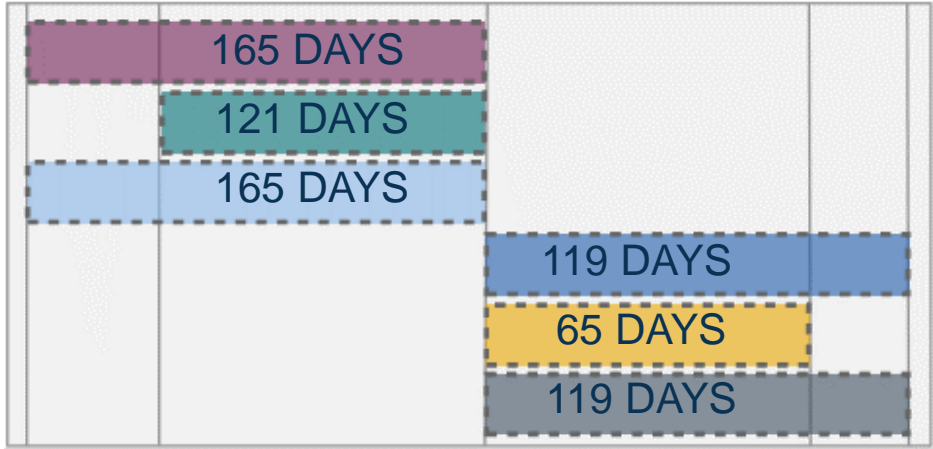


Project Phasing

Overall Construction Phasing



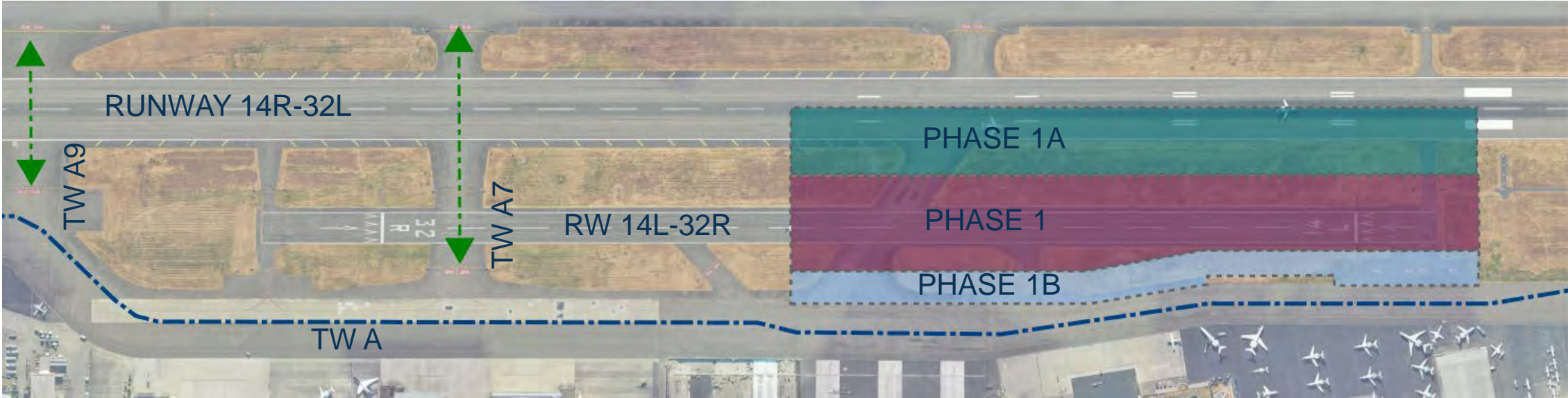
CONSTRUCTION SCHEDULE



DAY 0* DAY 44 DAY 165 DAY 230 DAY 285**

*CONSTRUCTION START
**CONSTRUCTION END

North Construction Phase



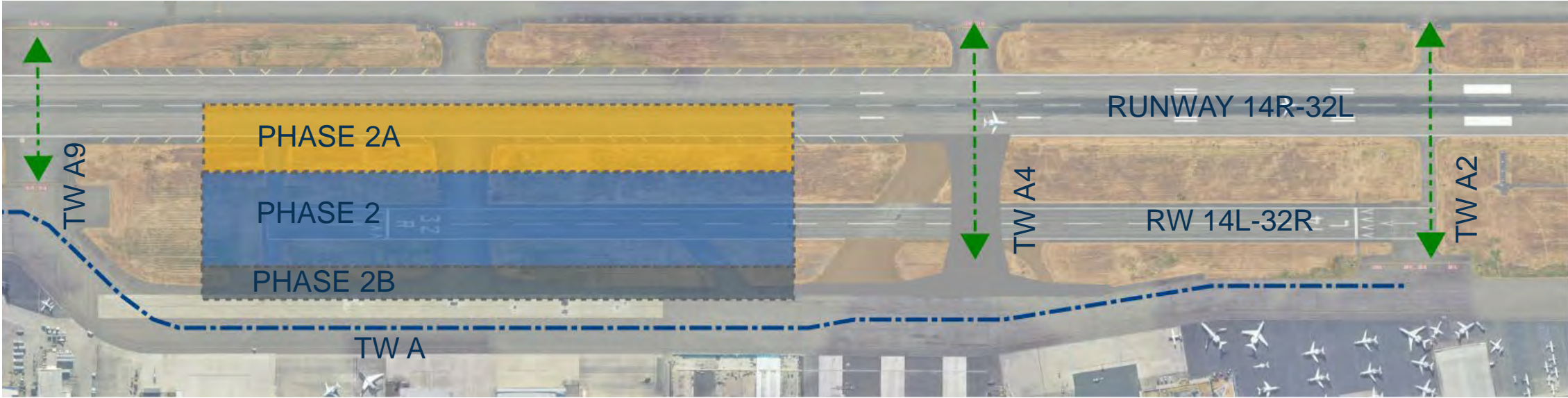
Key Considerations

- Active Cross Field Taxiways
 - TW B4/A7
 - TW B5/A9
- Temporary Relocated Centerlines
 - TW A: A8 to UPS Gate 6: ADG IV
 - TW A: UPS Gate 6 to Gate 4: B767-3F or Smaller
 - TW A: UPS Gate 4 to TW A2 – G650 or Smaller

Tentative Runway 14R-32L Closures (121 Calendar Days)

- Monday: 2015 - 0345
- Tuesday: 2015 - 0345
- Wednesday: 2015 - 0345
- Thursday: 2015 - 0345
- Friday: 2000 - 0515
- Saturday: 2115 - 0330
- Sunday: 2015 – 0515

South Construction Phase



Key Considerations

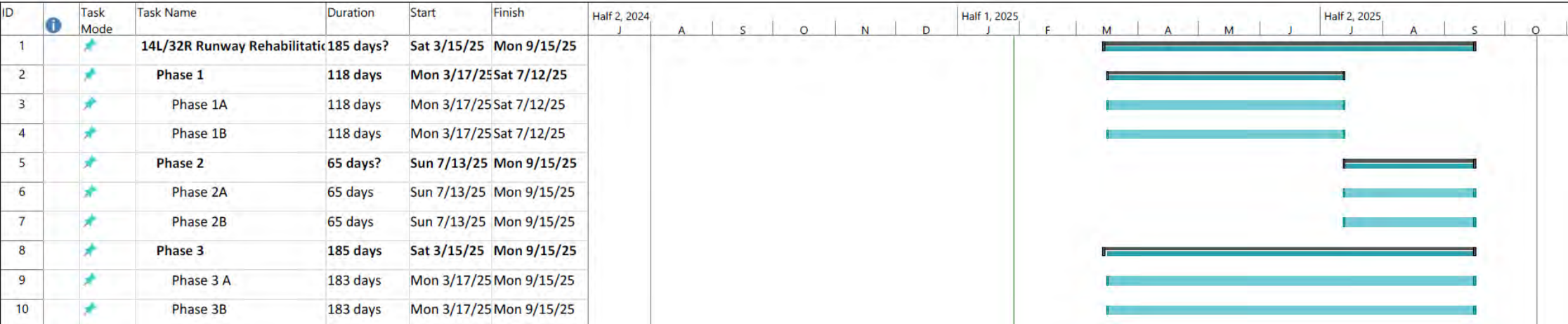
- Active Cross Field Taxiways
 - TW B3/A4
 - TW B5/A9
- Temporary Relocated Centerlines
 - TW A: A8 to UPS Gate 8: ADG III
 - TW A: UPS Gate 8 to Gate 6: B767-3F or Smaller
 - TW A: UPS Gate 6 to TW A4 – ADG IV

Tentative Runway 14R-32L Closures (119 Calendar Days)

- Monday: 2015 - 0345
- Tuesday: 2015 - 0345
- Wednesday: 2015 - 0345
- Thursday: 2015 - 0345
- Friday: 2000 - 0515
- Saturday: 2115 - 0330
- Sunday: 2015 – 0515

Tentative Schedule

Date	Milestone
March 17 th , 2025	Construction Mobilization and Demolition
July 9 th , 2025	Phase 1 Complete
July 14 th , 2025	Begin Phase 2
October 8 th , 2025	Phase 2 Complete



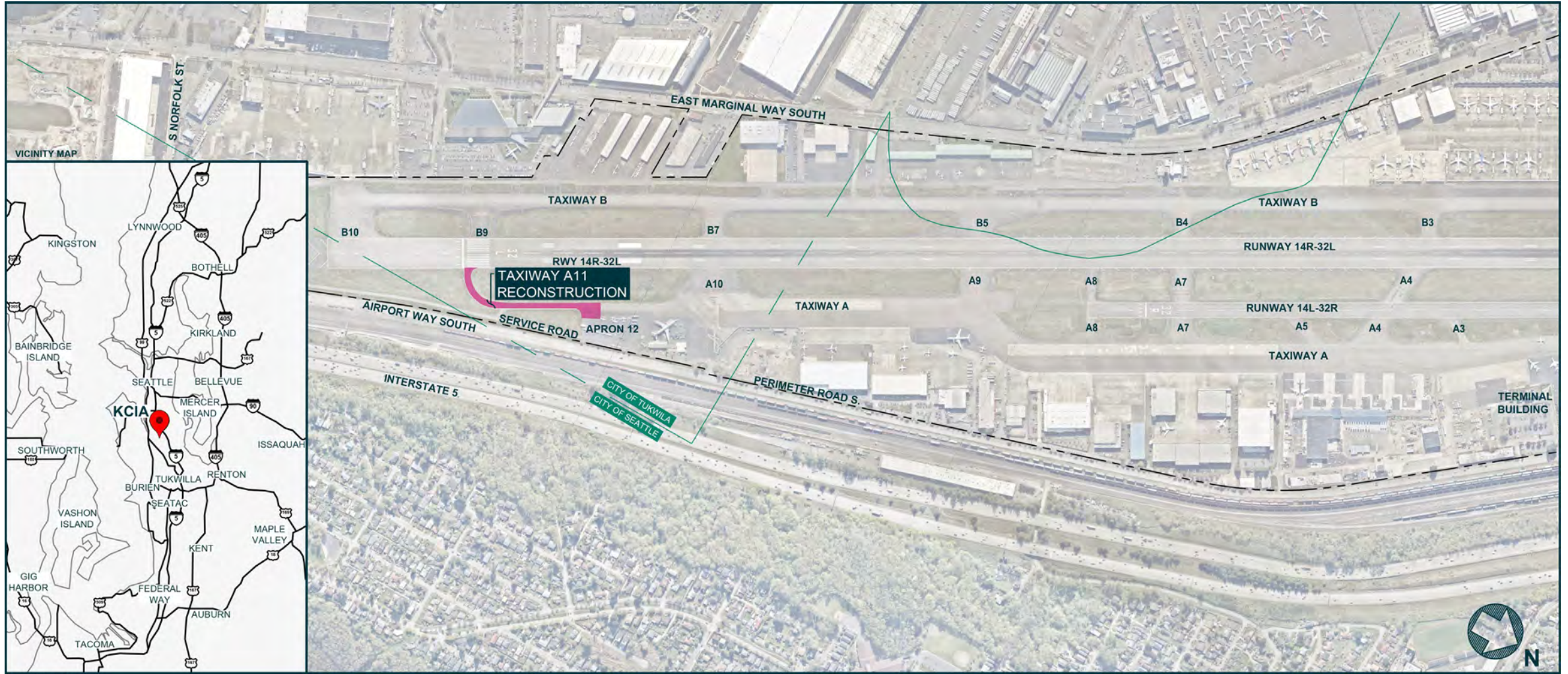
*This represents a conservative schedule with contingency for weather delays, if the contractor is ahead of schedule they will begin work in other phases.



King County
International Airport
Boeing Field

KCIA-BFI Taxiway A11 Rehabilitation
Construction Estimated to Start Q3 2025

Project Area

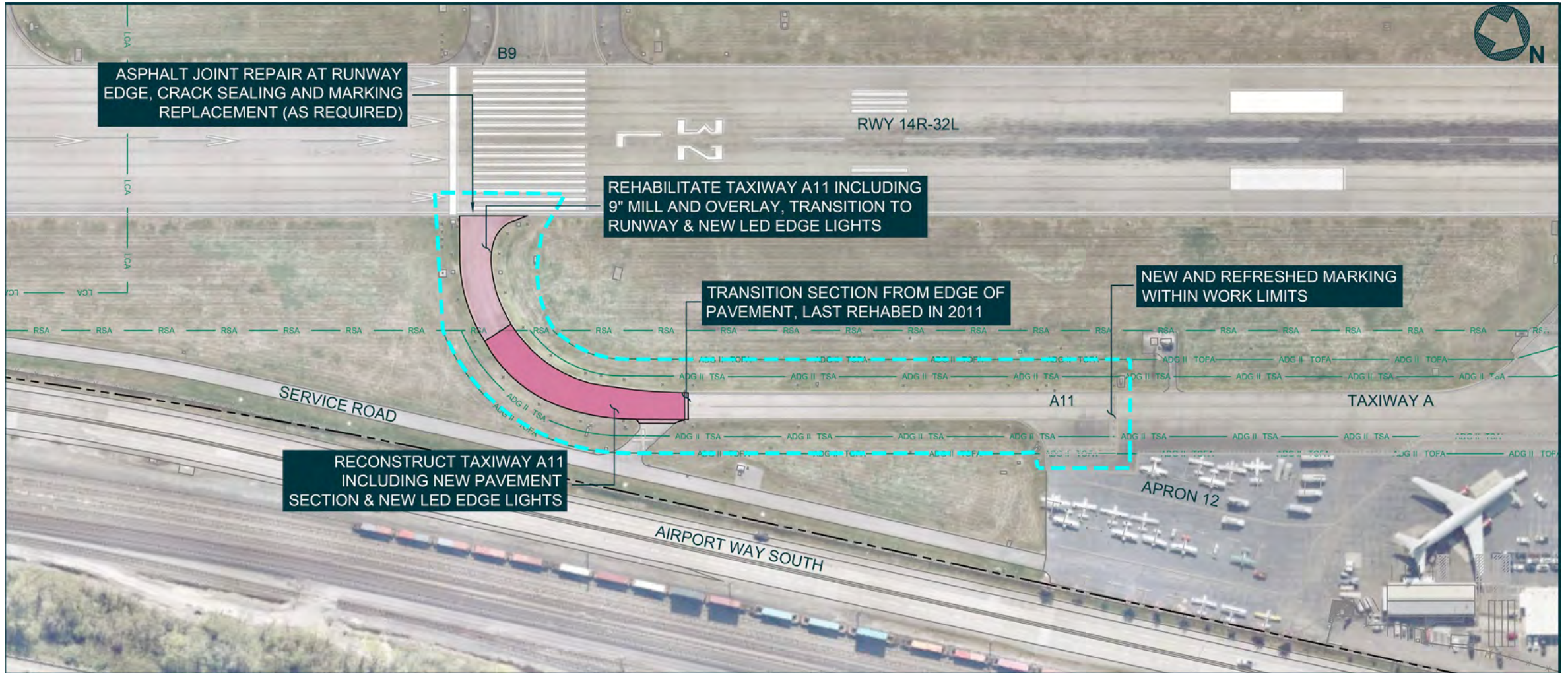


NOT TO SCALE

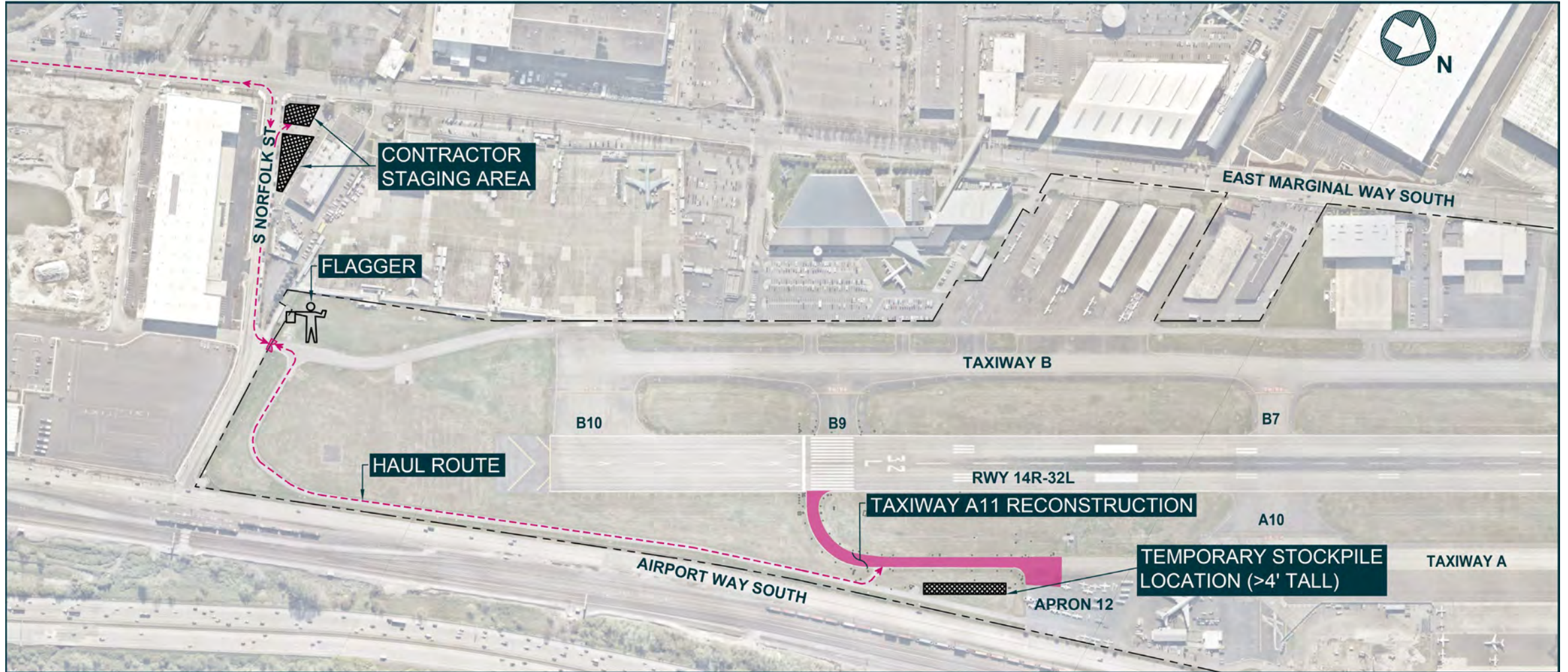


King County
International Airport
Boeing Field

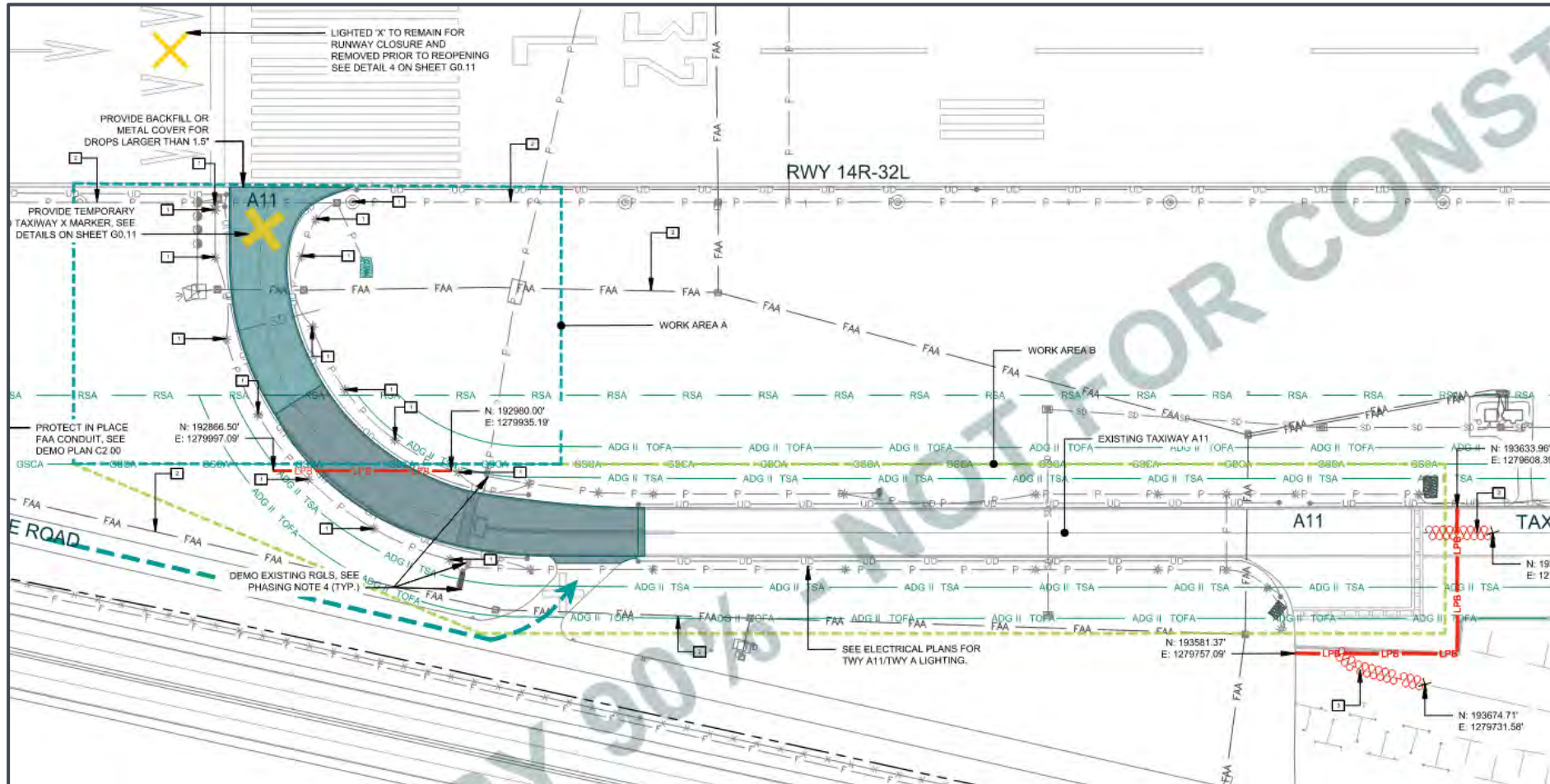
Project Scope



Project Construction Haul Route

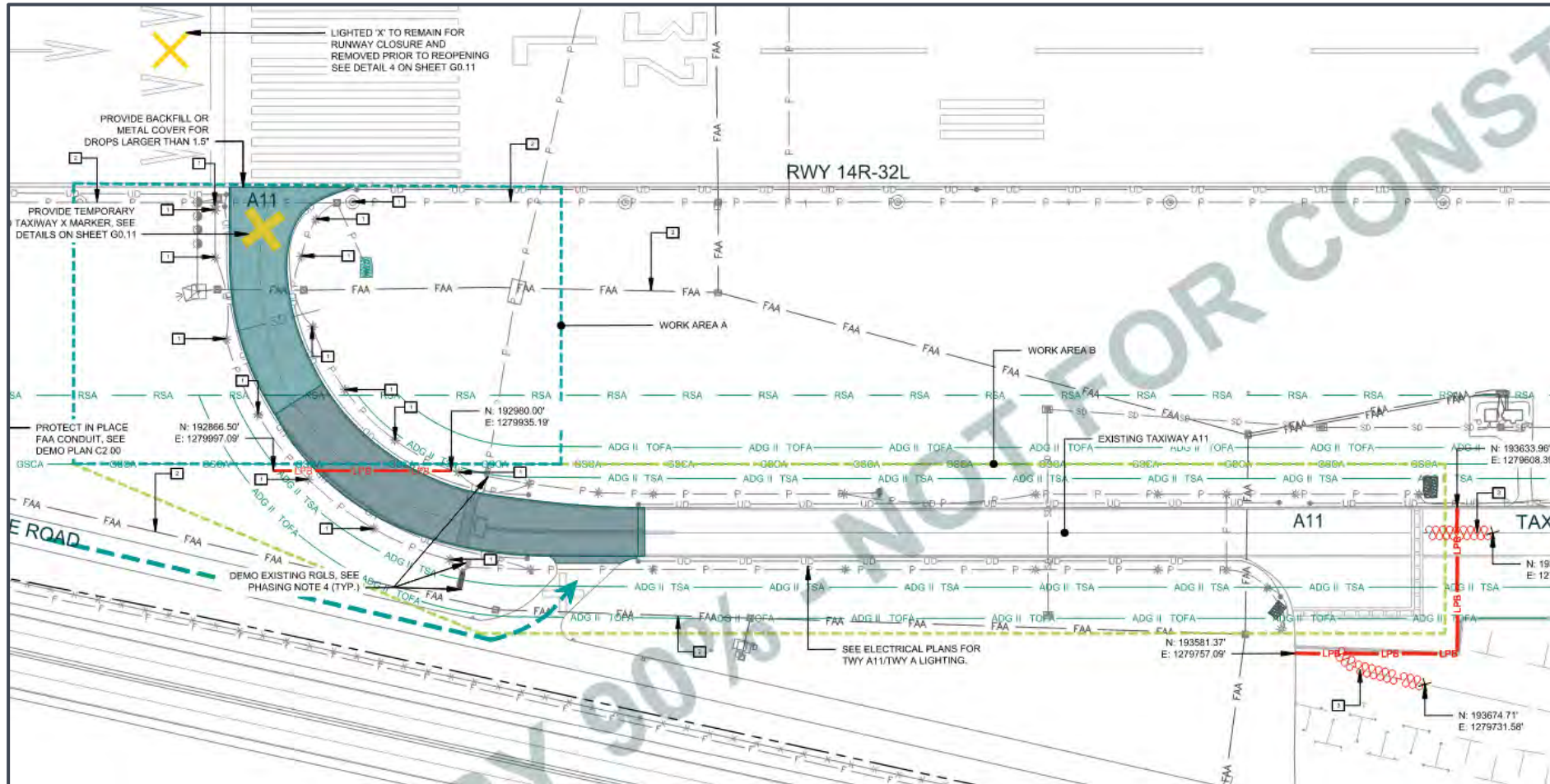


Project Sequence of Work



1. Close Taxiway A11 to operations for 60 Calendar Days.
2. Complete 'Work Area A' with Runway 14R-32L closed during night-time hours (Thurs.-Sunday, hours vary).
3. Complete 'Work Area B' (concurrently with 'A') outside GSCA during normal work hours (Mon.-Friday 7:00-5:00).
4. Complete 'Substantial Completion' walk-through/punchlist and stop work for asphalt cure-period (30 days).
5. Complete final markings, reopen Taxiway A11.

Project Schedule



1. Design: Complete Q4 2024
2. Bidding: Q1 2025
3. Construction: Q3 2025



King County
International Airport
Boeing Field

KCIA-BFI ELECTRICAL In-pavement runway guard light project

Construction Estimated to Start June 2025

Project Overview

- **Objectives:**
 - Improve airfield electrical efficiency
 - Improve pilot situational awareness and airfield safety
- **Scope of Work:**
 - Install new LED in-pavement and elevated runway guard lights (IPRGL) at B1, B5 and B10.
 - Install Airfield Lighting Control Management System (ALCMS)



ATCT CAB, Existing CCR Control Switches



King County
International Airport
Boeing Field

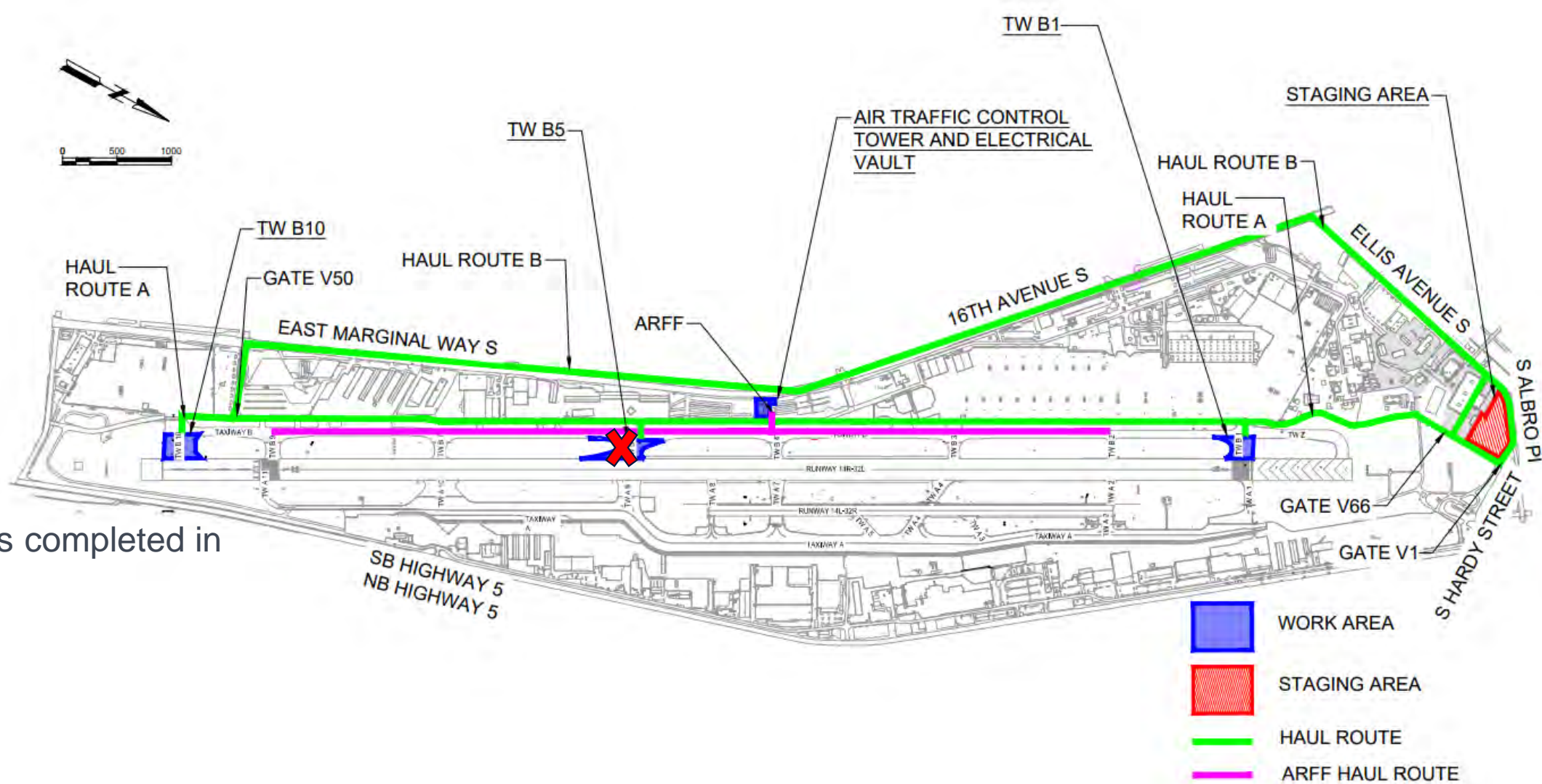


Elevated Runway Guard Light



In-pavement Runway Guard Light

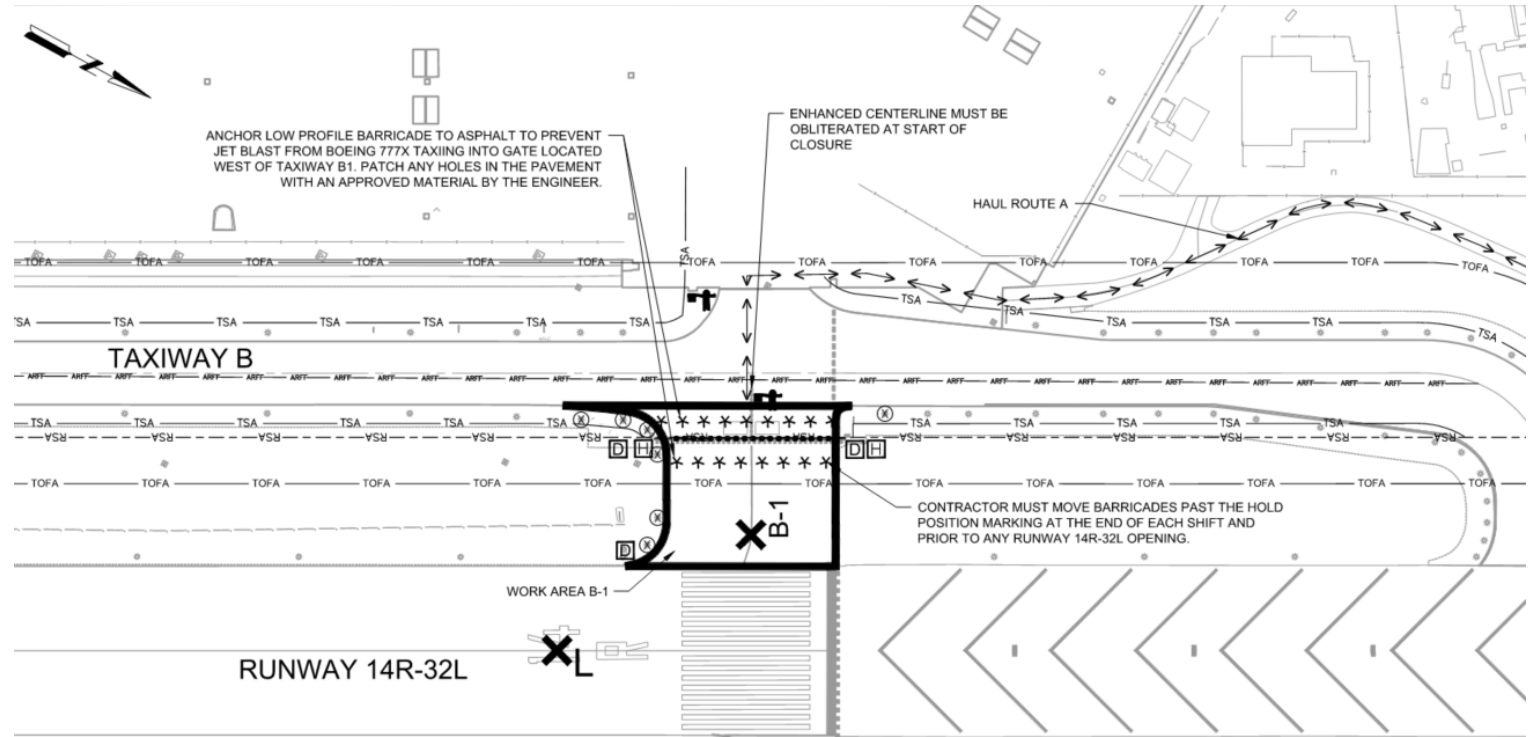
Construction Haul Routes and Staging Area Exhibit



B10 was completed in 2024

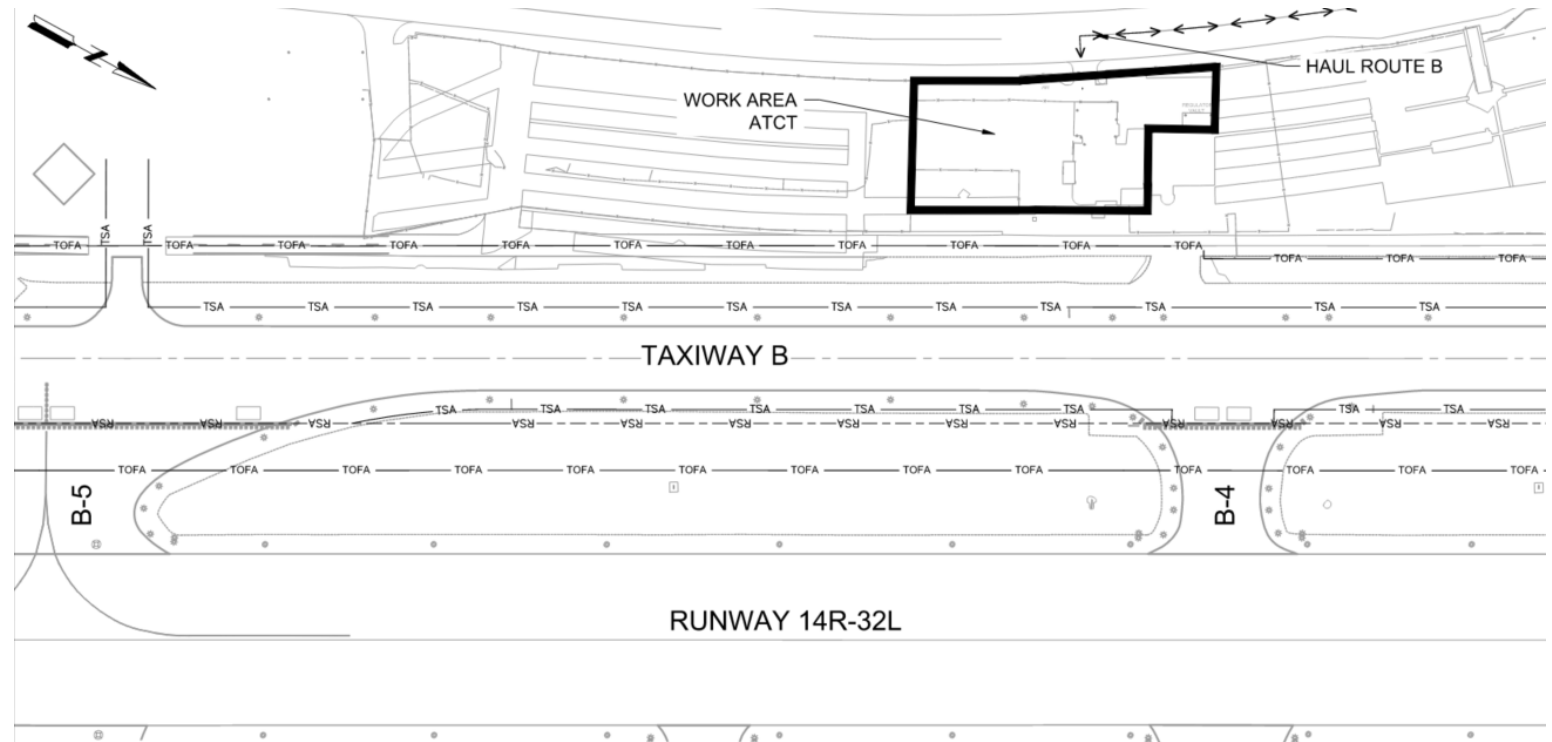
Construction Sequencing and Impacts – Work Area B-1

- **Work hours:**
 - Work outside the RSA:
 - 7 Days a week: 10:00 pm to 6:00 am
 - Work within the RSA:
 - Monday: 2015 - 0345
 - Tuesday: 2015 - 0345
 - Wednesday: 2015 - 0345
 - Thursday: 2015 - 0345
 - Friday: 2000 - 0515
 - Saturday: 2115 - 0330
- Sunday: 2015 – 0515
- **Duration:** 30 calendar days



Construction Sequencing and Impacts – Work Area ATCT

- **Work hours:**
 - Nighttime 10:00 pm – 6:00 am (work within ATCT cab)
 - Daytime 6:00 am – 6:00 pm (work under the cab of ATCT, FAA parking lot, and electrical vault)
- **Duration:** 28 calendar days





King County

International Airport

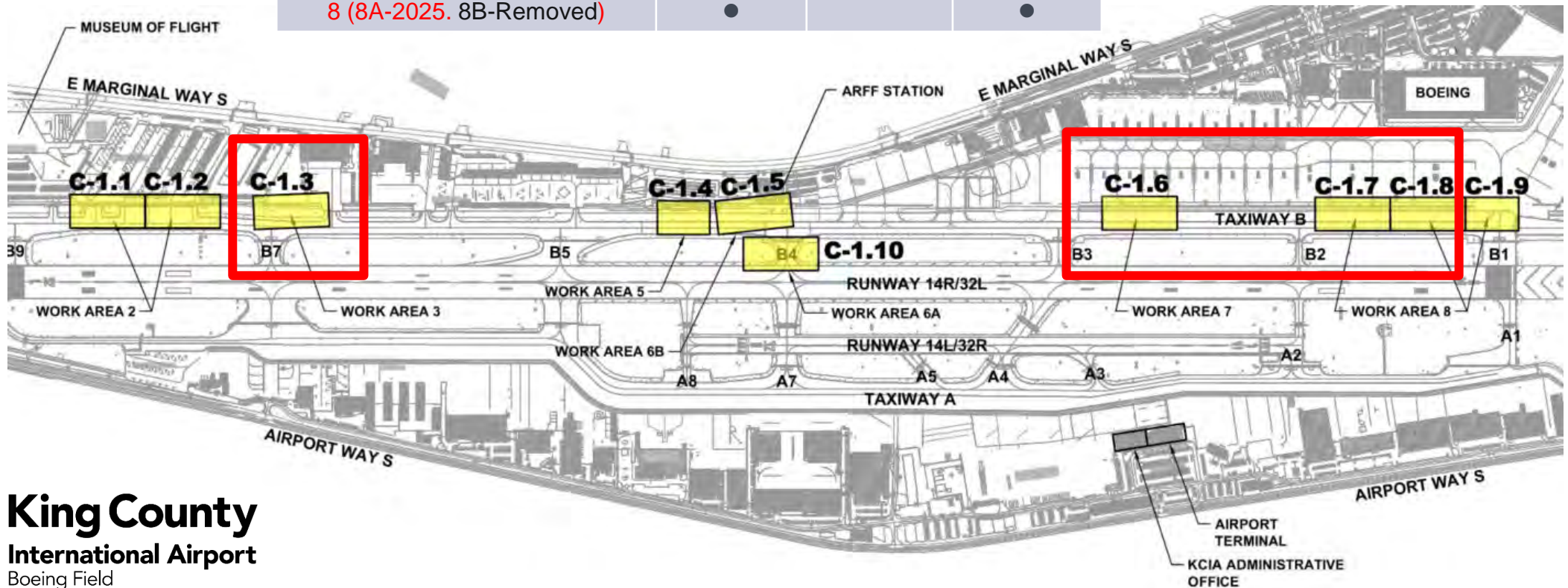
Boeing Field

STORMWATER REPAIRS - PHASE III

Construction Estimated to Start Q2 2025

Planned Repairs by Work Area

Work Area	Trenchless Pipe Rehabilitation	Open Trench Pipe Replacement	Stormwater Catch Basin Replacement
2 (Removed)	●		●
3 (2025)	●		●
5 (Completed)	●		
6A (Completed)	●	●	●
6B (Completed)	●		
7 (2025)	●		●
8 (8A-2025. 8B-Removed)	●		●



Planned Haul Routes





King County
International Airport
Boeing Field

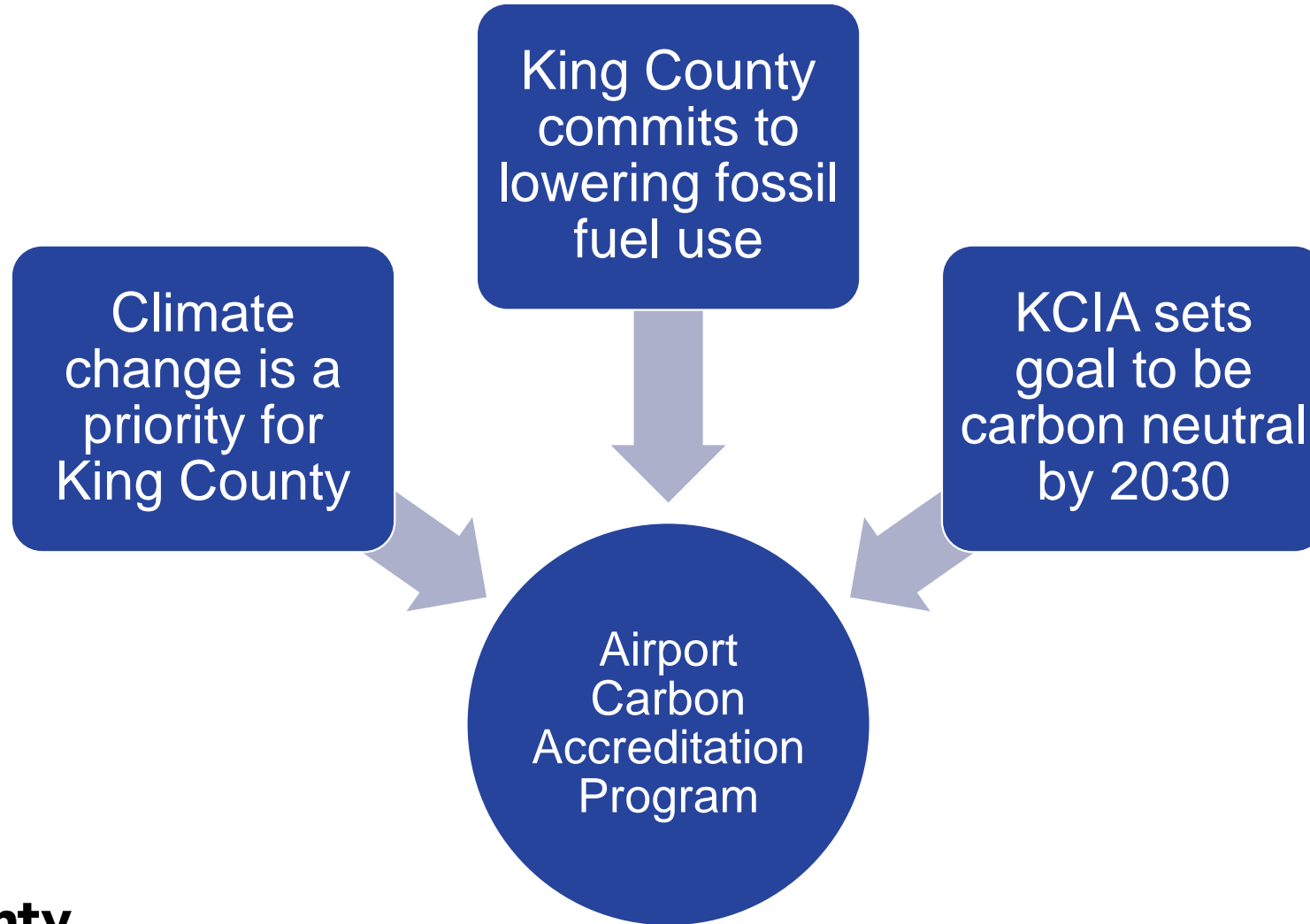
Level 3 Airport Carbon Accreditation

Feb 13, 2025

Peter Dumaliang, KCIA Capital Project Manager
Rebecca Frohning, WSP Senior GHG Analyst
Megan Archer, WSP Environmental Planner

Spiro Pappas, WSP Climate Resilience Practice
Karissa Kawamoto, WSP Senior Vice President
Jenny Thacker, PRR Community Engagement

King County International Airport is Addressing Climate Change



What is the Airport Carbon Accreditation Program?

Reducing carbon and increasing airport sustainability



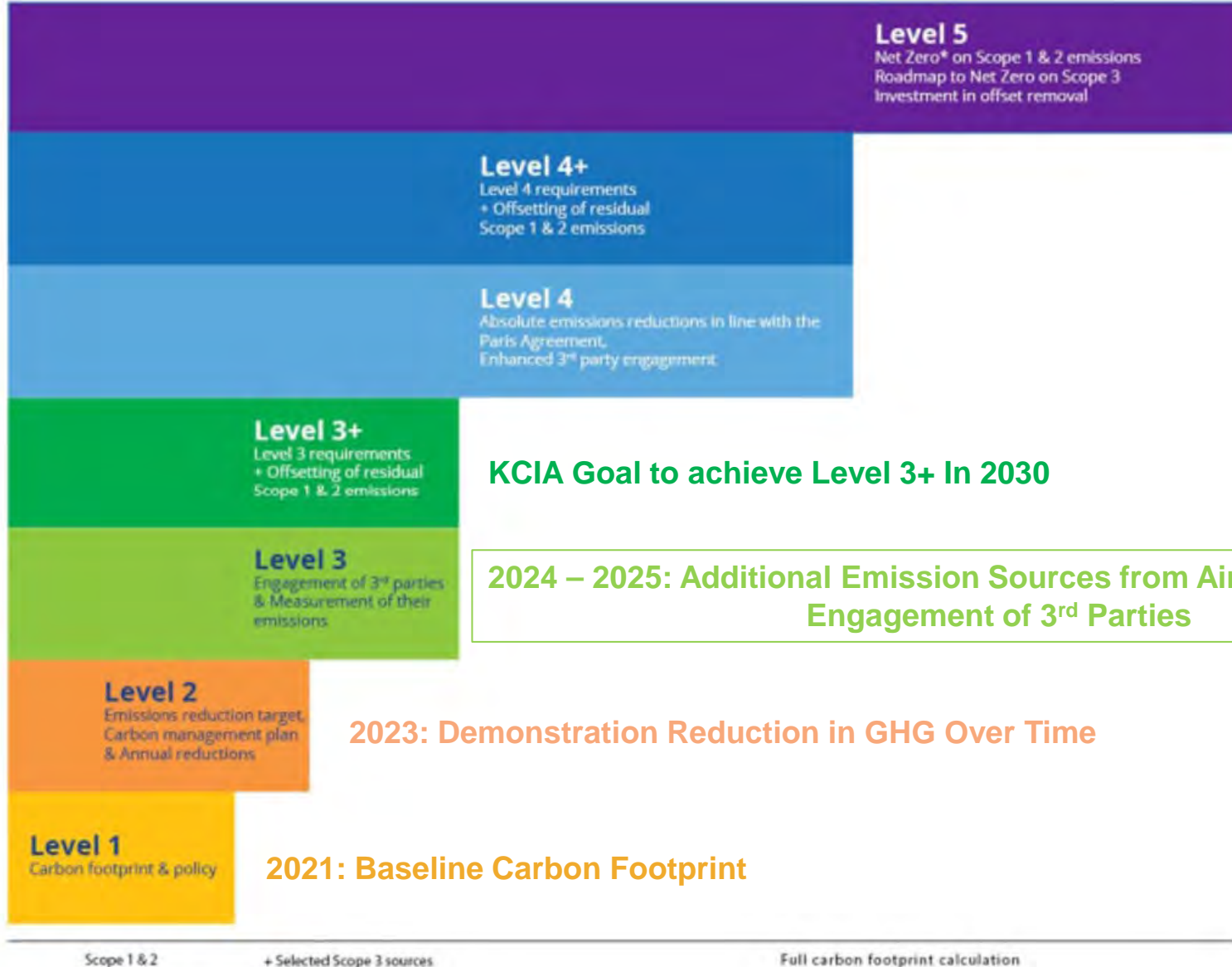
550
airports in the programme

In **87**
countries across the world

Welcoming **3.6** billion
passengers a year

That's **54.8** %
of the global air
passenger traffic

What has KCIA done so far?



KCIA Goal to achieve Level 3+ In 2030

**2024 – 2025: Additional Emission Sources from Airport (Scope 3)
Engagement of 3rd Parties**

2023: Demonstration Reduction in GHG Over Time

2021: Baseline Carbon Footprint

What kinds of information did we collect?

We will partner with you to gather data about

Number of onsite employees	Basic information to categorize scale of airport activities
Fuel use	Emissions from vehicles, ground support equipment, emergency generators, boilers
Aircraft related emissions	Landing take-off, APU time, maintenance
Refrigerants, De-icers	Other GHG sources onsite

We kept confidential and aggregated to remove identifying features

We used collection procedures are reasonable and require minimal coordination.

What did we learn?

Emission Source	Activity	GHC Emissions (MT CO2e)
Fleet vehicles	516 gallons gasoline	5
Fleet vehicles	1,680 gallons diesel	17
Electricity use	358,219.8 kWh electricity	3
Natural gas use	55,990 therms natural gas	302
Generator use	60 gallons of diesel	1
Aircraft engines	42 LTO	18
Aircraft engines	24 run-ups	30

What is next?

- We will be reaching out through the Airport to schedule meetings
- You are also welcome to reach out to us!

Contact	Title	Email
Spiro Pappas, WSP	Environmental Planner	Spiridon.Pappas@wsp.com
Rebecca Frohning, WSP	Environmental Planner	Rebecca.Frohning@wsp.com
Megan Archer, WSP	Environmental Planner	Megan.Archer@wsp.com
Jenny Thacker, PRR	Community Engagement	jthacker@prrbiz.com



King County
International Airport
Boeing Field

Thank you!
Any questions?