

General Administration

(non-EM-specific duties)

Distribution to key staff members, as appropriate

- Best Run Government (includes Lean/Visual Management)
- Equity/Social Justice
- Government Affairs
- Employee Giving
- Strategic, Business, and Implementation Plans
- Team-building/Social Events

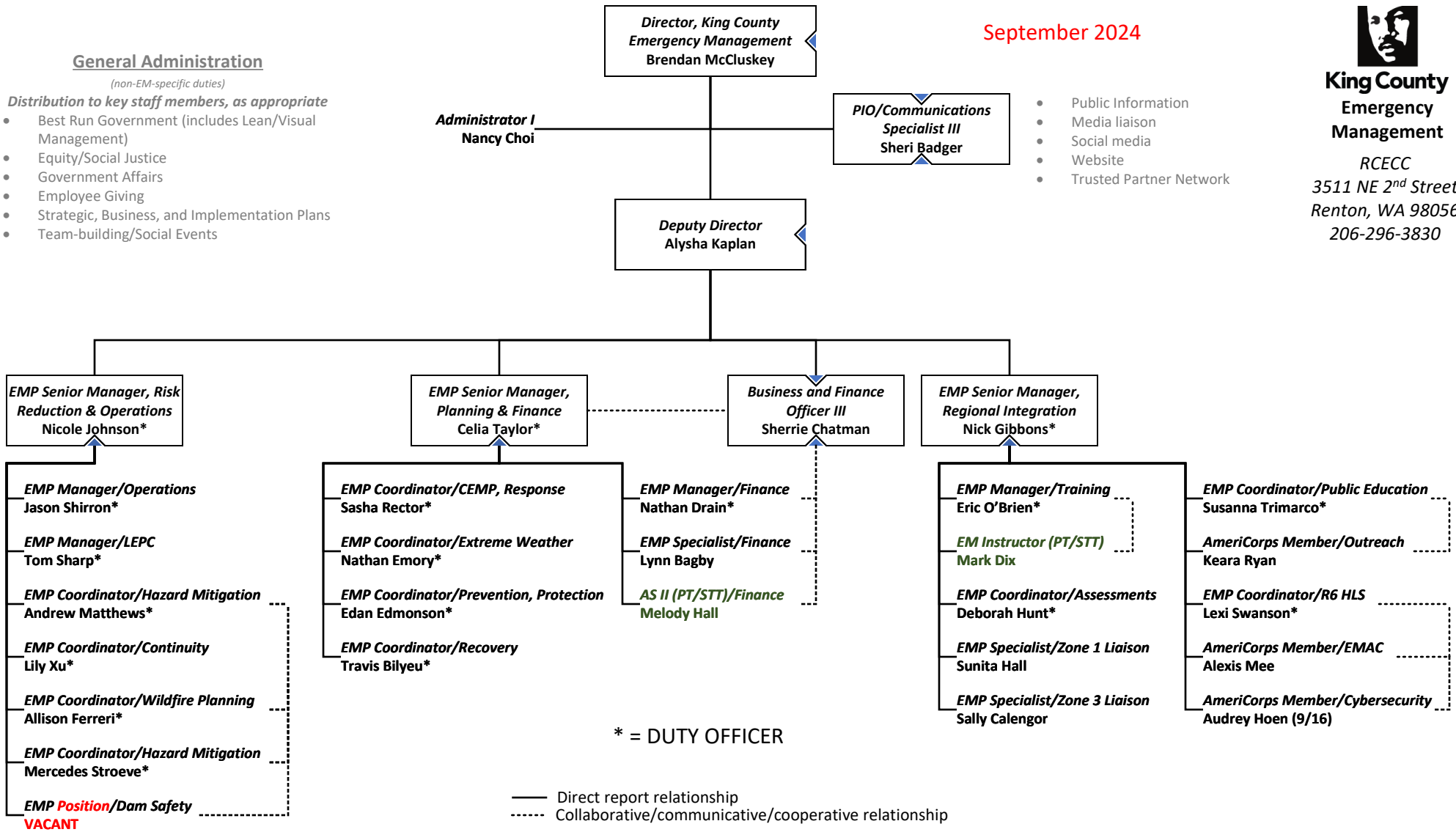
September 2024



**King County
Emergency
Management**

RCECC
3511 NE 2nd Street
Renton, WA 98056
206-296-3830

- Public Information
- Media liaison
- Social media
- Website
- Trusted Partner Network



* = DUTY OFFICER

— Direct report relationship
- - - Collaborative/communicative/cooperative relationship

Risk Reduction & Operations Section

- EOC and Facilities Technology
- Alert & Warning Systems
- Emergency Worker Program
- Duty Officer Program
- SOGs and Playbooks
- First Responder Liaison
- Continuity Program
- LEPC
- Mitigation
- SCAP/CWPP/WUI Initiatives
- Dam Safety
- Tsunami Planning
- SERP

Planning & Finance Section

- Planning System
- CEMP
- Frameworks and other Plans
- Catastrophic Plans (SCIPT/RCPT)
- Mass Care & Severe Weather Plans
- RCF and RCF Agreement
- PA & IA Programs
- Grant and Contract Management
- Records Management
- MOUs/MOAs/MAAs

- Budget Development & Maintenance
- COVID Finance Coordination
- Procurement
- Accounting
- Timekeeping
- Compliance
- Asset Management

Regional Integration Section

- Advisory Committees: EMAC, EMCC, UAWG
- Public Education & Outreach
- Corrective Action/Improvement Planning
- THIRA/SPR
- Zone Liaison Program
- Assessments (gaps, capabilities, needs)
- Training
- Exercises
- HLS Grant Development/Coordination
- Cybersecurity