

KING COUNTY GROWTH MANAGEMENT PLANNING COUNCIL AGENDA ITEM

| |
|---|
| AGENDA TITLE: GMPC Motion 24-1: Amending the Urban Growth Area Boundary |
| PRESENTED BY: Chris Jensen, Comprehensive Planning Manager, King County |

Today’s Meeting

At its September meeting, the Growth Management Planning Council (GMPC) is scheduled to approve GMPC Motion 24-1, which amends the Urban Growth Area (UGA) boundary on the maps in the Countywide Planning Policies (CPPs).

Discussion

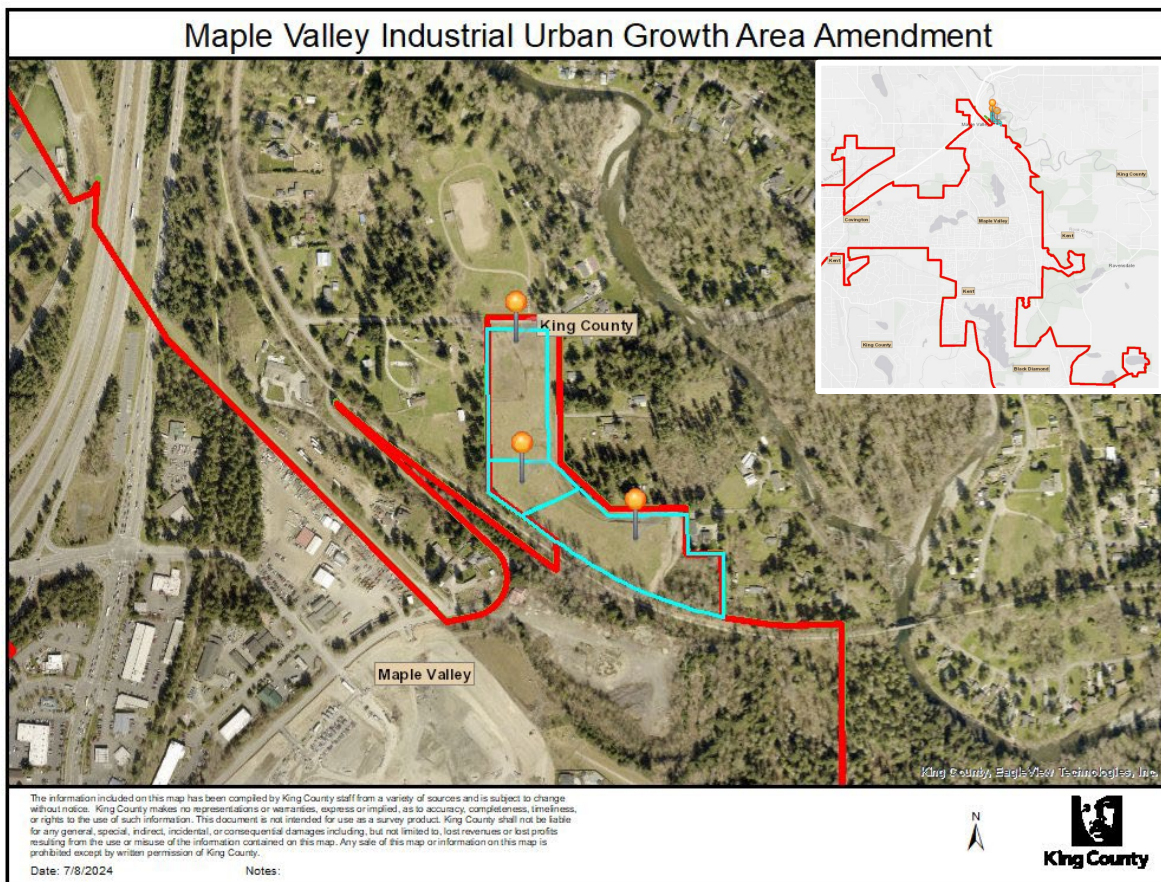
At its July meeting, the GMPC was briefed on a proposed amendment to the UGA boundary that is being considered in the proposed 2024 King County Comprehensive Plan.¹ (see July GMPC [staff report](#) and the map on the following page)

As noted in the July staff report, a King County Council committee acted in June 2024 on the proposed 2024 Comprehensive Plan and proposed updates to the CPPs.² The Committee voted to move the legislation with a “Do Pass” recommendation to the full County Council for possible adoption in December 2024.

As part of the committee action, a Land Use and Zoning Map Amendment proposes to amend the UGA boundary next to the City of Maple Valley to move three parcels out of the UGA and into the Rural Area. This amendment would also move a portion of an undesignated King County right-of-way. The new UGA boundary would coincide with the northern limit of the City of Maple Valley in this area.

¹ Proposed 2024 King County Comprehensive Plan [\[LINK\]](#)

² 2021 King County Countywide Planning Policies, as amended [\[LINK\]](#)



Policies in the CPPs and Comprehensive Plan³ guide the review of UGA amendments. These were reviewed in an Area Zoning and Land Use Study (included in staff report), which concluded that the potential UGA contraction met the provisions in both sets of policies.

Future Activity

Should the GMPC act on GMPC Motion 24-1, there is no further GMPC action on this topic. Future activity will include County Council consideration of the recommendation in the motion and potential adoption of the CPP amendments. Should that occur, the CPP amendment would be sent to the cities and towns in King County for ratification, per the provisions of CPP FW-1.

For More Information

If members and/or their staff are interested in additional detail, please contact Chris Jensen, Comprehensive Planning Manager, at chris.jensen@kingcounty.gov or 206-477-0581.

Attachments

- A. GMPC Motion 24-1

³ 2016 King County Comprehensive Plan, as amended [\[LINK\]](#)