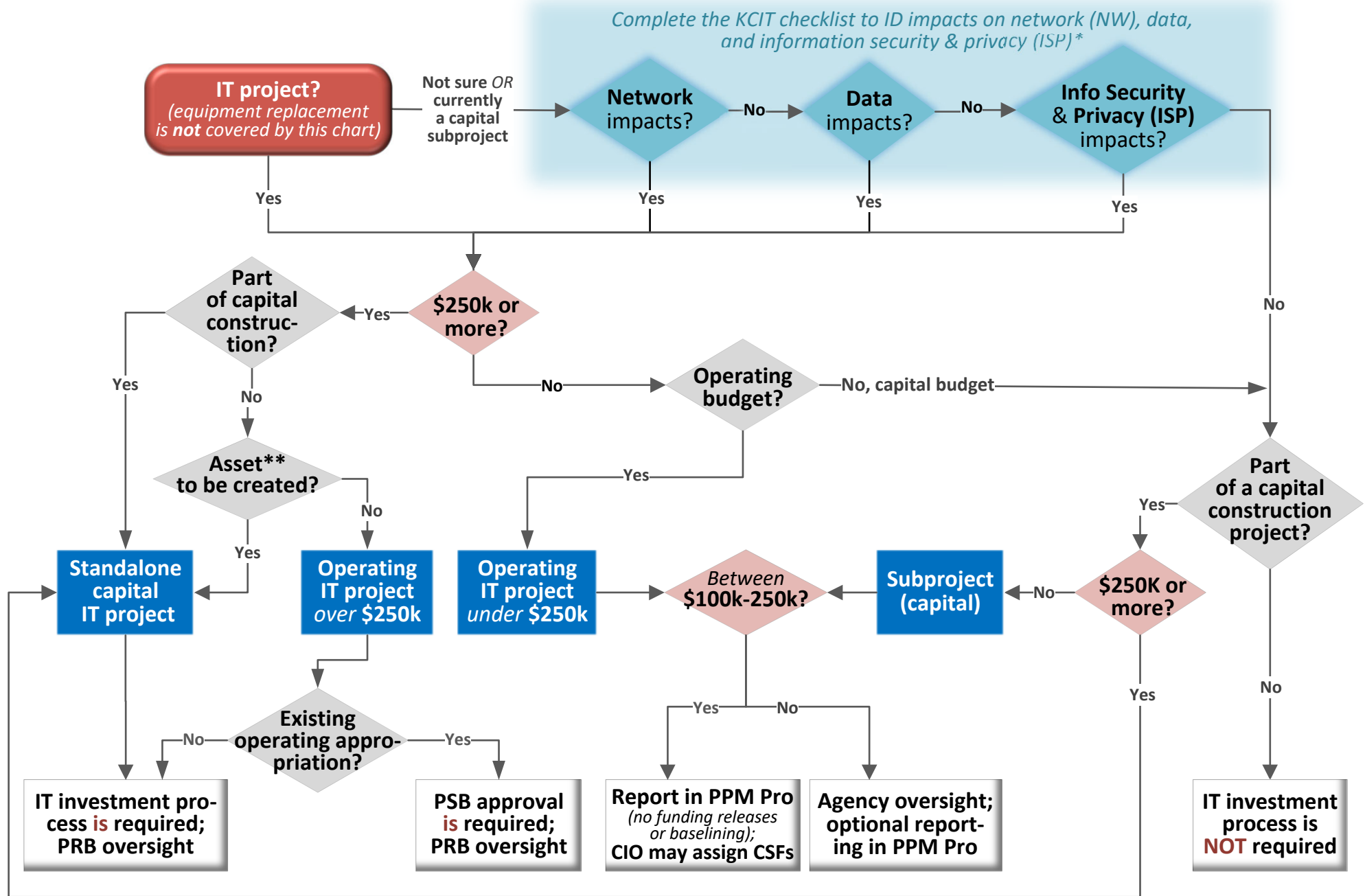


IT PROJECT TYPE AND OVERSIGHT DETERMINATION



* If assistance is needed with completing the checklist and making a determination, consult with the IT CSM/Separately-Elected Agency Liaison.

** Refer to the King County Policy FIN 12-1-1 (AEP) "Capitalization Thresholds for Capital Assets" and/or consult with your agency's capital finance manager to make a determination whether an asset will be created.