

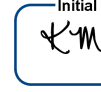


King County

Department of Local Services
Road Services Division

January 23, 2025

TO: Stacy Graves, Assistant Planner, Permitting Division



FM: Katie Merrell, Environmental Engineer, Environmental Unit

RE: Construction Hours Noise Variance Request
16th Avenue SW and SW 100th Street Pedestrian Improvements and Roadway Paving Project

King County Department of Local Services, Road Services Division (Roads) is requesting a Construction Hours Noise Variance to work outside of normal hours of operation per King County Code (KCC) 12.86.520 in accordance with the requirements of KCC 16.82.105.B. The following information is provided in support of this request.

Applicant: Katie Merrell
Environmental Engineer III, Environmental Unit
Road Services Division, King County Department of Local Services
Mailstop: KSC-LS-0313
201 South Jackson Street
Seattle, WA 98104

Contact: Jon Linders and Sayed Torak
Project Managers, Traffic and Roadway Design Unit
Road Services Division, King County Department of Local Services
Mailstop: KSC-LS-0313
201 South Jackson Street
Seattle, WA 98104

Project Location: See the attached Vicinity Map. The project is in the unincorporated King County neighborhood of White Center, as follows:

- On 16th Avenue SW, from the intersection of 17th Avenue SW and SW White Center Cutoff to SW 107th Street.
- On SW 100th Street, from 14th Avenue SW to approximately 840 feet east.

Project Description: The project involves grinding existing asphalt pavement, installing traffic signal loops, raising/adjusting utility structures, minor drainage improvements, paving, and installing striping.

Construction Schedule: It is anticipated that Roads' contractor will complete this work over a period of 24 weeknights between July 1, 2025, and October 31, 2025.

Variance Requested: Roads is requesting a construction hours noise variance to work from 7:00 p.m. to 6:00 a.m., Monday evening to Saturday morning, for 24 weeknights between July 1, 2025, and October 31, 2025. Roads will work with the public to maintain access to business parking, loading zones, and driveways during the work hours to the extent feasible. Specific mitigation measures to avoid and minimize noise impacts are described below.

Stacy Graves
January 23, 2025
Page 2 of 5

Justification for Variance: Working during non-peak traffic hours provides multiple benefits, as follows:

- Decreases the total working days to complete the project, which minimizes impacts to residents, businesses, and the traveling public.
- Reduces impacts to residents and businesses relying on-street parking.
- Minimizes potential economic impacts to businesses.
- Improves safety for workers and the traveling public.

No known sensitive receivers are within 500-feet of the project site. Per the requirements under KCC 16.82.105, the proposal is not anticipated to cause significant adverse noise effects to the community.

Anticipated Construction Equipment for Night Work: Equipment to be used includes, but is not limited to, the following: asphalt grinder, dump trucks, asphalt paver with auger, asphalt compactor/roller, portable generator, portable construction lights, hand tools, and other miscellaneous construction equipment. An Equipment Table is attached at the end of this document.

Mitigation Measures: Per KCC 16.82.105(B)(6), Roads proposes measures to minimize noise impacts to avoid health and safety hazards to the community caused by work outside of normal hours of operation; these measures include:

- Specific mitigation measures listed in the attached Equipment Table will be implemented to the extent feasible.
- All vehicles will be equipped with non-pure tone back-up warning devices to the extent allowed or required by the Washington State Department of Labor and Industries; the contractor may use back-up observers in lieu of back-up warning devices for all equipment except dump trucks in compliance with WAC 296-155-610 and 296-155-615.
- All trucks performing export haul will be maintained and approved by the Engineer.
- Truck tailgates will be secured to prevent excessive noise from banging.
- All equipment used during the normal working hours and after hours will be properly muffled and will comply with all applicable local, state, and federal regulations.
- Music, loud voices, radios, and other amplifying equipment will not be used in a manner that is heard outside the immediate work area.
- A copy of the Construction Hours Noise Variance will be kept on-site during work activities.
- On-site, "Businesses are Open" signs.
- At least 14 days prior to starting the first night of work, Roads will provide the following:
 - Notices written in plain English mailed to addresses within 500 feet of the work area to notify affected residents and businesses.
 - Email, text, and social media outreach.
- Roads will provide ongoing community updates via the following:
 - MyCommute: <https://gismaps.kingcounty.gov/mycommute/>
 - Project-specific webpages:
 - <https://kingcounty.gov/16thAveSW>
 - <https://www.kingcounty.gov/depts/local-services/roads/paving-projects.aspx>
- Roads will maintain an accurate record of the day's work on this project during nighttime hours via the Inspector's Daily Report.

Stacy Graves
January 23, 2025
Page 3 of 5

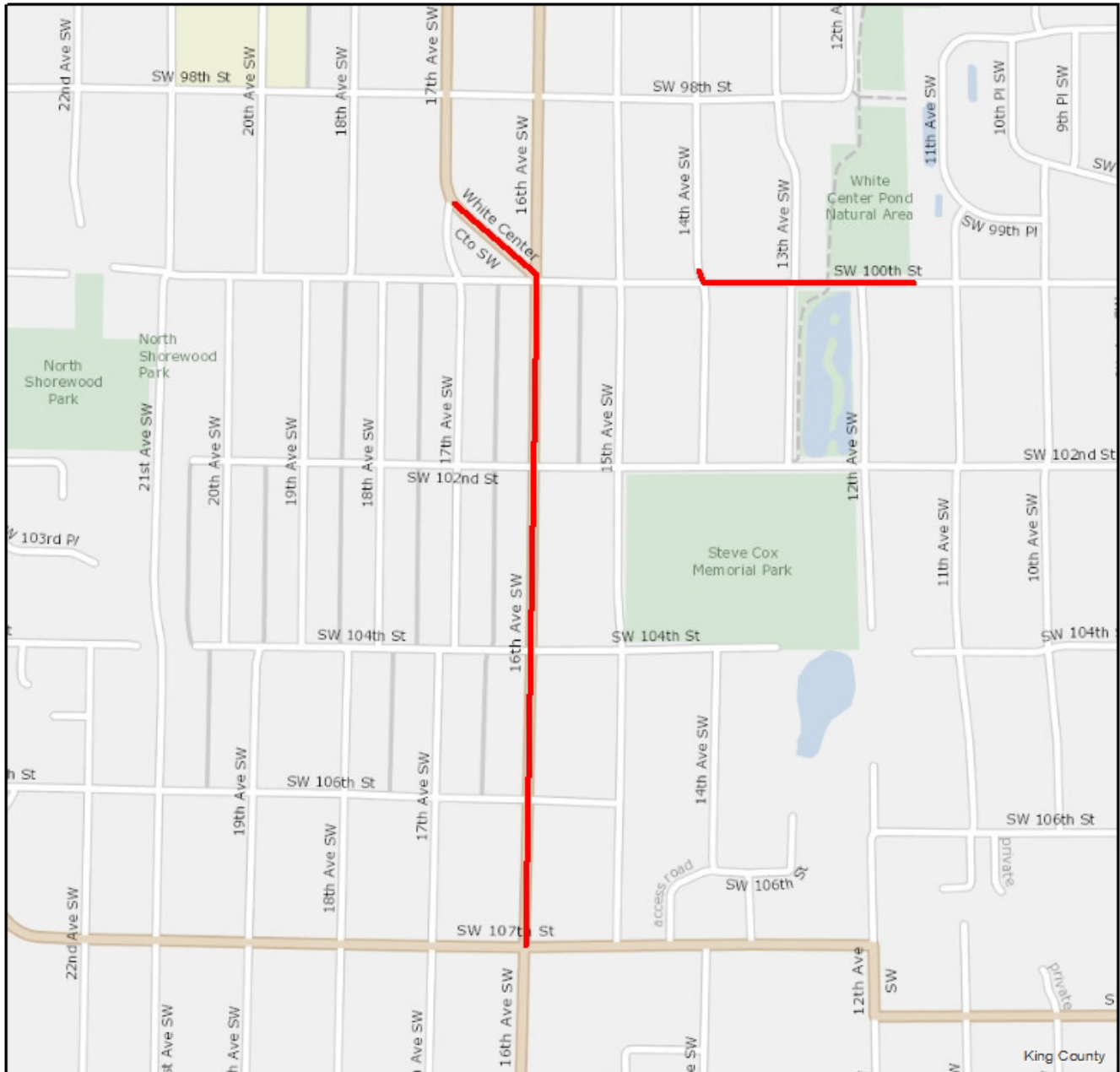
- Contact information during construction for the project is as follows:
 - Victor Daggs, Construction Supervisor
206-423-1063, Victor.Daggs@kingcounty.gov
 - Sujay Shandil, Resident Engineer
(206) 423-9181, Sujay.Shandil@kingcounty.gov
 - Roads 24/7 Road Helpline
206-477-8100.

Thank you for your assistance with this project. If there are any questions, please contact me at 206-477-3648 or Katie.Merrell@kingcounty.gov.


Enclosures

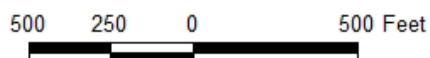
cc: Jon Linders, Project Manager, Traffic & Roadway Design Unit, Engineering Section (ES), Road Services Division (RSD), Department of Local Services (DLS), ES, RSD, DLS
Sayed Torak, Project Manager, Traffic & Roadway Design Unit, ES, RSD, DLS
Emily Davis, Environmental Scientist, Environmental Unit, RSD, DLS
Broch Bender, Project/Program Manager IV, RSD, DLS
Amy Bresslour, Project/Program Manager III, RSD, DLS

Stacy Graves
January 23, 2025
Page 4 of 5



16th Avenue SW and SW 100th Street Pedestrian Improvements and Roadway Paving Project

 Project Location



Disclaimer: The use of the information in this map is subject to the terms and conditions found at: www.kingcounty.gov/services/gis/Maps/terms-of-use.aspx. Your access and use is conditioned on your acceptance of these terms and conditions.



Stacy Graves
 January 23, 2025
 Page 5 of 5

Equipment Table

Equipment	Sound Level (dBA) ^a					Mitigation Measures
	At 50 ft	At 100 ft	At 200 ft	At 300 ft	At 500 ft	
Air compressor	78	70	63	59	53	When possible, air compressors will be located in areas shielded from direct line of sight from residences or temporary noise shields will be used.
Asphalt grinding machine	84	79	72	68	56	Slow moving mobile operation. Minimize use of backup alarms.
Asphalt roller	75	69	62	54	46	Modern rollers are vibratory static temporary noise. Use at each location will be brief.
Dump truck	76	68	61	57	51	Non-pure tone back up alarms will be utilized; truck tailgate banging is not allowed.
Generator	81	73	66	62	56	When possible, generators will be located in areas shielded from direct line of sight from residences or temporary noise shields will be used. Will only be used when necessary.
Portable light plants and generators	72	66	60	56	52	Existing street lighting will be supplemented as needed with portable light plants and generators that will be low to the ground and directed downward. House-side shields can be added as needed
Pickup truck	75	67	60	56	50	Contractor will avoid parking and idling vehicles next to residences.
Street Sweeper	72	69	66	56	62	Mobile operation. Construction equipment sounds will be in short duration and minimized with non-pure tone backup warning.
Temporary traffic control signs	71	65	59	55	51	Avoid parking equipment next to businesses. Request contractor to provide solar powered signs if possible.

^aBased on published noise levels (L_{max} at 50 ft) for common construction equipment and soft-site noise attenuation (WSDOT Biological Preparation Manual, 2020 Update).