

## What is the King County Comprehensive Plan?



The Comprehensive Plan is the County's primary policy document.

It guides how and where growth and development in King County over the next 20 years.



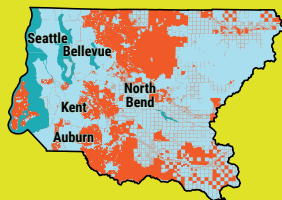
## What was the focus of the 2024 Update?

The 2024 Update was rooted in the County's goal to *make King County a welcoming community where every person can thrive*, with a focus on:



## What areas of King County are affected?

### UNINCORPORATED KING COUNTY



Development regulations



Land use

### REGIONAL SERVICES THROUGHOUT THE WHOLE COUNTY



Transit



Sewers



Parks



Trails

## Why does King County do a Comprehensive Plan?

King County is required to review and update the Plan at least once every ten years to ensure we meet the goals and requirements of the Washington State Growth Management Act.

These updates are an opportunity to make major policy changes that address our community's long-term needs and advance the County's goals.



## What was the Timeline?

Jan. – June 2022  
Scope of Work

July 2022 – Mid 2023  
Executive Public Review Draft

Mid 2023 – Dec. 2023  
Executive Recommended Plan

Jan. 2024 – Dec. 2024  
Council Review, Amendment & Adoption

**More info**  
[KingCounty.gov/CompPlan](https://kingcounty.gov/CompPlan)

