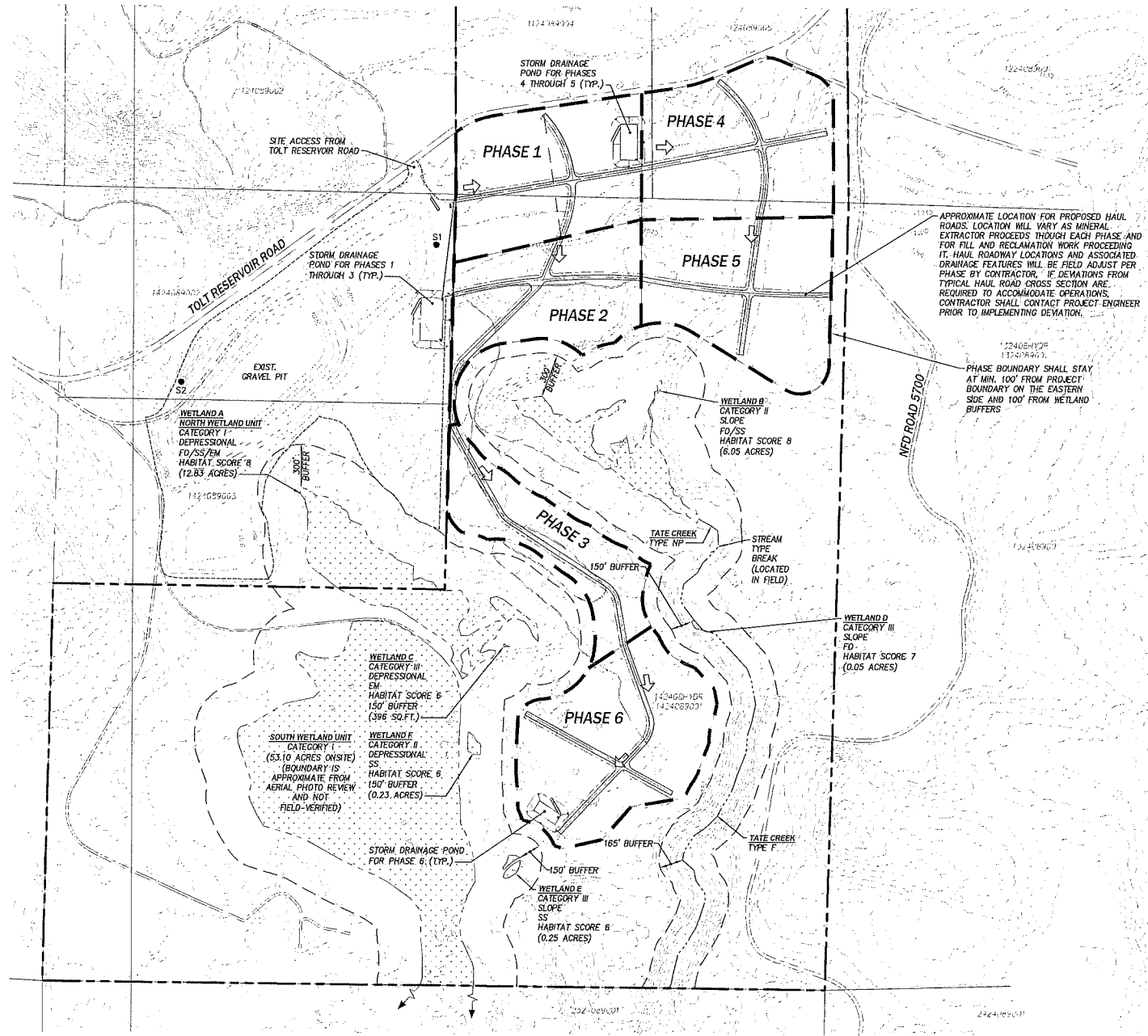


PTNS. OF SEC 11 AND 14, TWP 24 N, R8E W.M.

CS1912011
 CS2512011
 OWETS12011
 VICINITY
 CUSDS12011
 TELCOCK
 CDSGN12011



LEGEND

- EXIST. LOGGING/ACCESS ROAD
- PROPOSED PHASING LINE (20 AC MAX. PER PHASE)
- PROPOSED SD INFILTRATION FACILITY
- EXIST. GRADE CONTOUR
- WETLAND
- DIRECTION OF WORK
- DISTURBANCE AREA
- WETLAND AREA

APPROXIMATE LOCATION FOR PROPOSED HAUL ROADS. LOCATION WILL VARY AS MINERAL EXTRACTOR PROCEEDS THROUGH EACH PHASE AND FOR FILL AND RECLAMATION WORK PROCEEDING IN HAUL ROADWAY LOCATIONS AND ASSOCIATED DRAINAGE FEATURES WILL BE FIELD ADJUST PER PHASE BY CONTRACTOR. IF DEVIATIONS FROM TYPICAL HAUL ROAD CROSS SECTION ARE REQUIRED TO ACCOMMODATE OPERATIONS CONTRACTOR SHALL CONTACT PROJECT ENGINEER PRIOR TO IMPLEMENTING DEVIATION.

PHASE BOUNDARY SHALL STAY AT MIN. 100' FROM PROJECT BOUNDARY ON THE EASTERN SIDE AND 100' FROM WETLAND BUFFERS

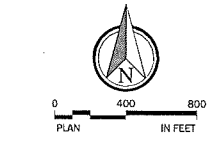


**5 MILE PIT EXPANSION
 CLEARING AND GRADING PERMIT
 PHASING PLAN**

CLIENT
 HOS BROTHERS CONSTRUCTION
 1733 W. EOSTIAN ROAD
 WOODINVILLE, WA 98072
 PHONE(425)481-8569

C|P|H
 CONSULTANTS
 Site Planning • Civil Engineering
 Landscape Architecture • Land Use Consulting
 11233 16th Street
 Everett, WA 98204 • (425) 202-2200
 191 South Woodbine Avenue, Suite 201
 Woodinville, WA 98072 • (206) 793-9770
 www.cphconsultants.com

PROJECT NO.	0051-20-011
DRAWING	C0.20
SHEET	6 OF 16



King County DLS - Permitting Approval

Review Engineer	Date
Senior Engineer	Date
Development Engineer	Date

