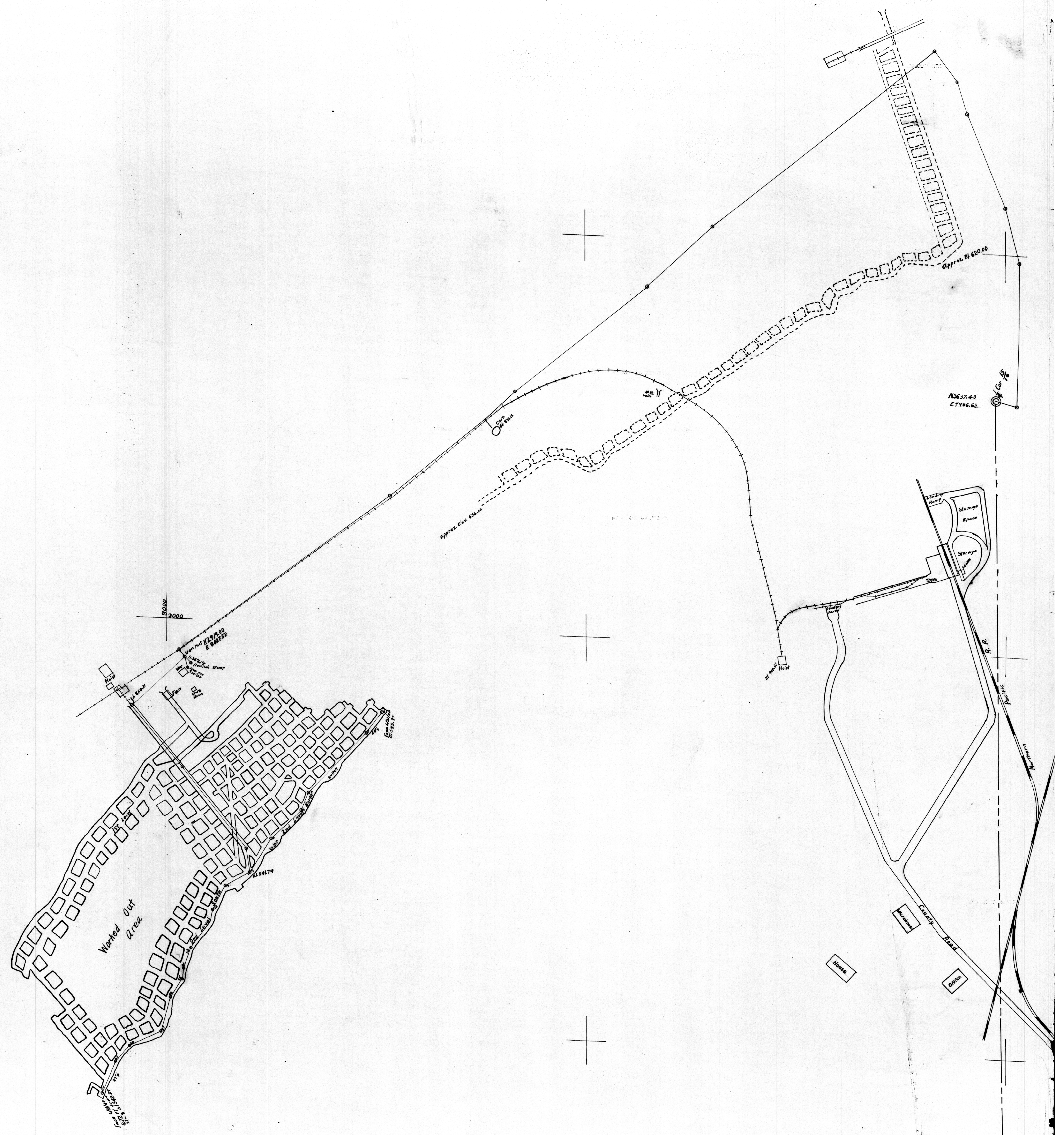




PALMER COKING COAL CO.
OCCIDENTAL No. 14 VEW
IN SEC. 16 T21 R.7E.
KING COUNTY WASH.
June 21 1940 Scale 1 inch = 100 ft.

Map drawn by John W. Hendley
State Surveyors License No. 100



K101
KING
Occidental
Mines
Map E
copy 1