

**HEATH & ASSOCIATES**

Transportation Planning & Engineering

---

**COLLISION HISTORY MEMORANDUM**

---

**Hyde Gravel Pit**  
King County

PREPARED FOR:  
Palmer Coking Coal Company, LLP

July 9, 2024

Date: July 9, 2024

Subject: Hyde Gravel Pit - Collision History Memorandum

To: Palmer Coking Coal Company, LLP

From: Aaron Van Aken, PE, PTOE

## INTRODUCTION

Per King County's February 7, 2024, Notice Letter of Determination of Significance, Traffic Comment #13, an update to the April 2021 Traffic Impact Analysis (TIA) was requested to include a discussion of crash history. Given the time that has elapsed since the original 2021 submittal, collision history has been reviewed and summarized in this supplemental TIA memorandum.

## COLLISION HISTORY

Collision history for each study intersection (4) contained in the April 2021 TIA along with the project frontage along Enumclaw Franklin Road (~500-ft north and south of the driveway) was requested from WSDOT. Data spanned the most recent five full years between 2019-2023. Refer to **Table 1** below location and collisions per year summary.

**Table 1: Collision History**

Ref #	Intersection/Corridor	2019	2020	2021	2022	2023	Avg/Yr
1 (Int.)	SR 169 & Enumclaw Franklin Rd	0	1	1	2	0	0.8
2 (Int.)	SR 169 & 383rd St/385th St	1	6	3	0	3	2.6
3 (Int.)	384th St & Enumclaw Franklin Rd	0	0	0	0	0	0.0
4 (Int.)	385th St & Enumclaw Franklin Rd	0	0	0	0	0	0.0
5 (Cor.)	Enumclaw Franklin & Access (MP 1.679-1.859)	0	0	0	0	0	0.0



A total of 17 collisions were recorded in the study area—all of which occurred at/near SR 169’s intersections with Enumclaw Franklin Road (4) and 383rd Street/385th Street (13). Out of the 17 reported collisions, nine resulted in injury with zero fatalities. The following sections analyze collision types, severity and contributing factors.

Collision Type Analysis

Summaries of collision types that occurred are provided in **Table 2** below.

**Table 2: Collision History Crash Types**

<u>Crash Type</u>	Number of Crashes (2019-2023)	
	Int 1	Int 2
Rear-End	2	7
From Opposite Direction	1	2
Enter at Angle	0	1
Guardrail - Face	0	1
Vehicle Overturned	0	1
Roadway Ditch	1	0
From Same Direction	0	1

The collision types were listed as “rear-end” (9), followed by “from opposite direction” (3), “enter at angle” (1), “guardrail - face” (1), “vehicle overturned” (1), “roadway ditch” (1), and “from same direction” (1).

Collision Severity Analysis

A collision severity summary associated with the study area is provided below in **Table 3**.

**Table 3: Collision History Severity**

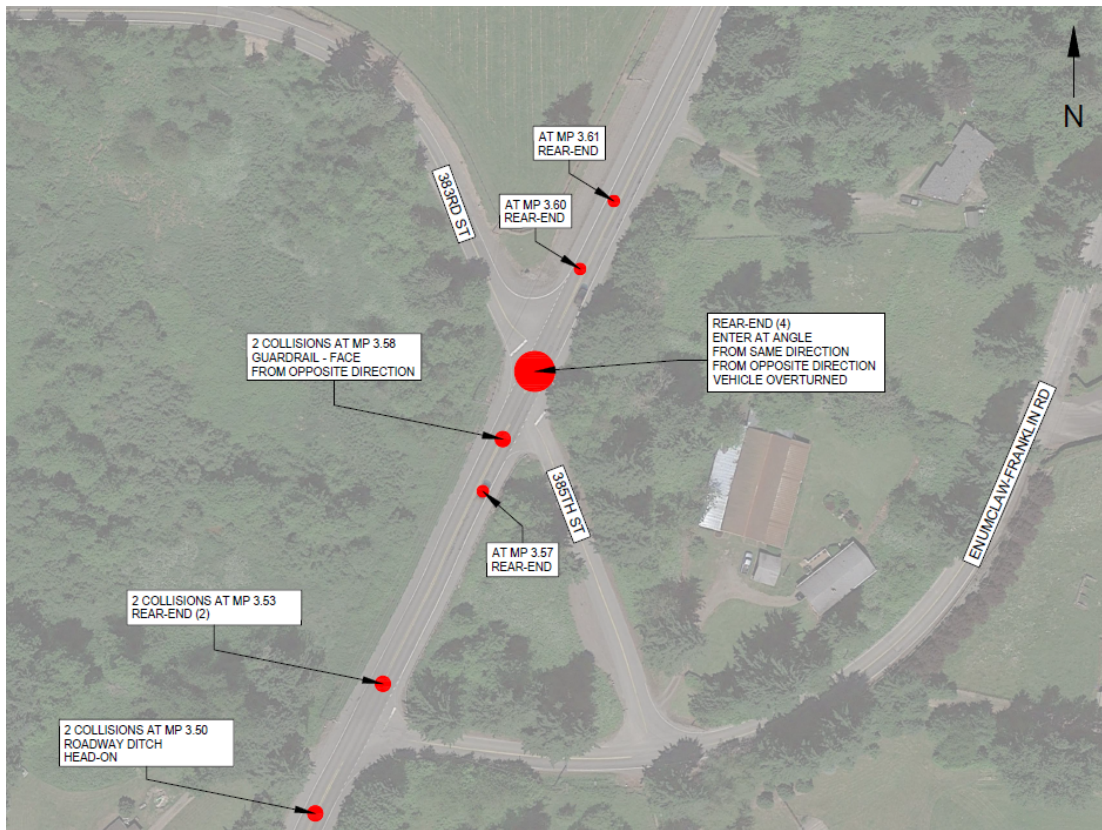
<u>Crash Type</u>	Number of Crashes (2019-2023)	
	Int 1	Int 2
Fatal (K)	0	0
Incapacitating Injury (A)	0	1
Non-incapacitating Injury (B)	1	2
Possible Injury (C)	1	4
Property Damage Only (PDO)/Unknown	2	6



Collision Involving Suspected Serious Injury:

1. The collision occurred in February of 2020 at the intersection of SR 169 & 383rd Street/385th Street at around 5:00 PM. The collision type is listed as from opposite direction - all others. The collision took place in the daylight with wet roadway conditions. The driver contributing circumstance is listed as under the influence of alcohol.

**Figure 1** below displays a collision history location map. A full-sized exhibit is provided in the appendix.



Please reach out should you have any additional questions or require further information.

Thank you,

Aaron Van Aken, P.E., PTOE



# HYDE GRAVEL PIT COLLISION HISTORY MEMORANDUM

## *APPENDIX*



