



Above: Approximate location of proposed parcel.

Specifically, the two irregularly shaped parcels have a total size of 45.73 acres site and are located in the SW $\frac{1}{4}$ of Section 30, and the SE $\frac{1}{4}$ of Section 19, Township 21 North, Range 7 East of the Willamette meridian in King County Washington.

METHODOLOGY

Ed Sewall of Sewall Wetland Consulting, Inc. inspected the site on August 21 & 29, 2016 and March of 2021. The site was reviewed using methodology described in the *Washington State Wetlands Identification*

Manual (WADOE, March 1997). This is the methodology currently recognized by King County and the State of Washington for wetland determinations and delineations. The site was also inspected using the methodology described in the *Corps of Engineers Wetlands Delineation Manual* (Environmental Laboratory, 1987), and the *Western Mountains, Valleys and Coast region Supplement* (Version 2.0) dated June 24, 2010, as required by the US Army Corps of Engineers. Soil colors were identified using the 1990 Edited and Revised Edition of the Munsell Soil Color Charts (Kollmorgen Instruments Corp. 1990).

Soil colors were identified using the 1990 Edited and Revised Edition of the **Munsell Soil Color Charts** (Kollmorgen Instruments Corp. 1990).

OBSERVATIONS

Existing Site Documentation.

Prior to visiting the site, a review of several natural resource inventory maps was conducted. Resources reviewed included the National Wetland Inventory Map and the NRCS Soil Survey online mapping and Data.

Soil Survey

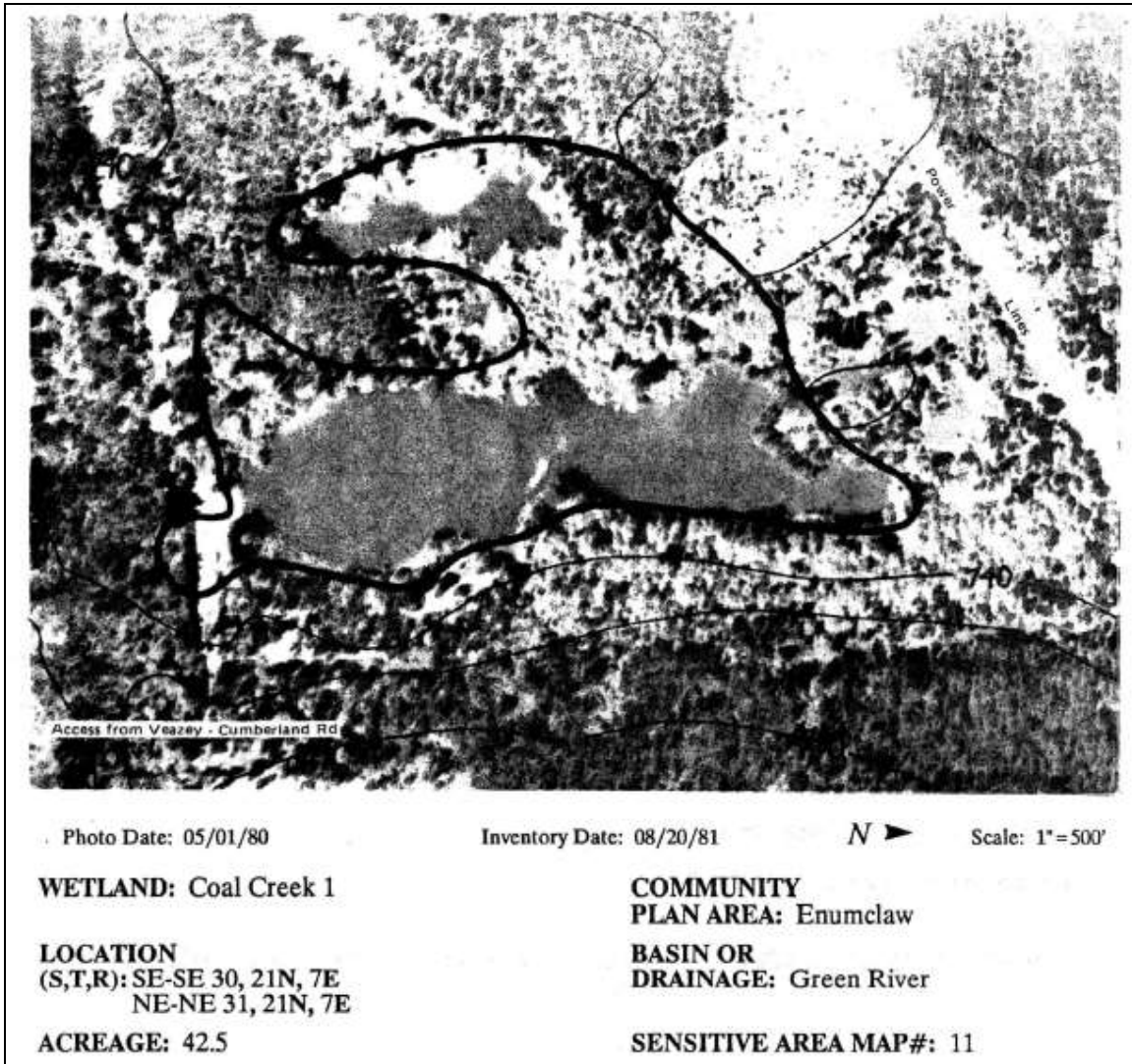
According to data on file with the on-line NRCS Soil Survey, the site is mapped as containing Everett very gravelly sandy loam 8%-15% slopes and Seattle Muck. Everett soils are somewhat excessively drained, and are not considered hydric or wetland soils. Seattle Muck soils are very poorly drained soils formed in decomposing sedges and is considered a hydric, or wetland soil.



Above: USDA Soil Survey Map of the site

King County Wetland Inventory

According to the 1990 King County Wetland Inventory notebooks, the site contains a large wetland referred to as “Coal Creek #1, a 42.5 acre wetland including open water, emergent and mud flats wetland classes. The wetland is described as having no outflow, and was rated as a Class 1 wetland under the old rating system.



National Wetlands Inventory (NWI)

According to the NWI map for the site there is a large wetland associated with Fish Lake containing forested, emergent and unconsolidated bottom wetland classes.



Above: National Wetlands Inventory Map of the site.

WADNR Fpars Water Type Mapping

A review of the WADNR Fpars Water Type mapping website reveals Fish Lake is a Type F water. Some of the small depressions at the north end of the lake are depicted as Type N waters.



Above: WADNR Fpars water type mapping of the area of the site.

WDFW Priority Habitats Maps

According to the WDFW Priority Habitat Website with Public access layers activated, the site is located within areas that have regular concentrations of elk (purple shading). Fish Lake is also depicted as containing coastal cutthroat trout, as well as waterfowl concentrations. Forested and shrub wetland is also noted on the north end of the lake.

No state or federally listed species are noted on or near the site.



Above: WDFW Priority Habitats Map of the area of the site.

Field observations

Uplands

The site consists of a mixed deciduous/coniferous forested area surrounding the north end of Fish Lake. The forested area contains large big leaf maple and some red alder mixed in with western red cedar and Douglas fir. Understory species include indian plum, red elderberry, vine maple, salmonberry, stink current, sword fern, salal, Oregon grape, stinging nettle, bracken fern and Himalayan blackberry.

The site is bordered by the power line and its access road to the north, forested and logged areas to the east and west, and scattered single family residences to the south. Topography is undulating along Fish lake and flat to the east and west.

Soils in the upland portion of the site consist of gravelly, dry well drained soils with soil colors of 10YR 3/3-3/4.

A single wetland is located on the site and is referred to as Wetland D. Below is a description of this wetland;

Wetland D

As previously mentioned, a large wetland associated with Fish Lake is located on the site. Fish Lake itself is an isolated wetland with an inlet stream (Coal Creek) feeding the wetland. Fish Lake is partially man-made, the result of the diversion of Coal Creek into Fish Lake during the early 1900's by Veazie area farmers who sought to keep their farmland from periodically flooding. This wetland was flagged with flags D1-D54. The wetland has a very highly fluctuating water table.

The wetland contains forested areas with Oregon ash, red alder, sitka and pacific willow, red-osier dogwood, salmonberry, and twinberry on the outer perimeter. Patches of scrub shrub wetland are located along the edge of the emergent and mud flats portions of the wetland. Reed canary grass, is the predominant emergent species although various sedges, skunk cabbage and lady fern are also present.

Water table fluctuations appear to be up to 20' in elevation, with flotsam and debris found far into the wooded portion of the wetland.

Soil pits excavated throughout the wetland revealed a mix of sapric muck to mottles gravelly loam soils. Areas of surface water seepage were found in portions of the wetland indicating Fish Lake itself is not the only hydrologic support of this wetland.

Using the US Fish and Wildlife Wetland Classification Method (Cowardin et al. 1979), Wetland B has areas that would be classified as PFO1C (palustrine, forested, deciduous, seasonally flooded), PSS1C, PEM1E and PUB as well as POW.

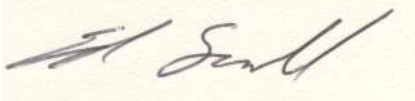
Using the 2014 WADOE Wetland Rating system and rating the wetland as a depressional type wetland, this wetland scored a total of 21 points with 8 for habitat. This indicates a Category II wetland. Category II wetlands with 8 habitat points in the rural areas of King County have a

225' buffer measured from the wetland edge for moderate impact uses such as a single family home.

WETLAND CATEGORY AND CHARACTERISTICS	INTENSITY OF IMPACT OF ADJACENT LAND USE		
	HIGH IMPACT	MODERATE IMPACT	LOW IMPACT
Category I			
Wetlands of High Conservation Value	250 feet	190 feet	125 feet
Bog	250 feet	190 feet	125 feet
Estuarine	200 feet	150 feet	100 feet
Coastal Lagoon	200 feet	150 feet	100 feet
Forested	Buffer width to be based on score for habitat functions or water quality functions		
Habitat score from 8 to 9 points (high level of function)	300 feet	225 feet	150 feet
Habitat score from 6 to 7 points (moderate level of function)	150 feet	110 feet	75 feet
Category I wetlands not meeting any of the criteria above	100 feet	75 feet	50 feet
Category II			
Estuarine	150 feet	110 feet	75 feet
Habitat score from 8 to 9 points (high level of function)	300 feet	225 feet	150 feet
Habitat score from 6 to 7 points (moderate level of function)	150 feet	110 feet	75 feet
Category II wetlands not meeting any of the criteria above	100 feet	75 feet	50 feet
Category III			
Habitat score from 8 to 9 points (high level of function)	300 feet	225 feet	150 feet
Habitat score from 6 to 7 points (moderate level of function)	150 feet	110 feet	75 feet
Category III wetlands not meeting any of the criteria above	80 feet	60 feet	40 feet
Category IV	50 feet	40 feet	25 feet

If you have any questions in regards to this report or need additional information, please feel free to contact me at (253) 859-0515 or at esewall@sewallwc.com .

Sincerely,
 Sewall Wetland Consulting, Inc.



Ed Sewall
 Senior Wetlands Ecologist PWS #212

Attached: Wetland Map
 Data and Rating forms

REFERENCES

Cowardin, L., V. Carter, F. Golet, and E. LaRoe. 1979. Classification of Wetlands and Deepwater Habitats of the United States. U.S. Fish and Wildlife Service, FWS/OBS-79-31, Washington, D. C.

Environmental Laboratory. 1987. Corps of Engineers Wetlands Delineation Manual, Technical Report Y-87-1. U. S. Army Corps of Engineers Waterways Experiment Station, Vicksburg, Mississippi.

Muller-Dombois, D. and H. Ellenberg. 1974. Aims and Methods of Vegetation Ecology. John Wiley & Sons, Inc. New York, New York.

Munsell Color. 1988. Munsell Soil Color Charts. Kollmorgen Instruments Corp., Baltimore, Maryland.

National Technical Committee for Hydric Soils. 1991. Hydric Soils of the United States. USDA Misc. Publ. No. 1491.

Reed, P., Jr. 1988. National List of Plant Species that Occur in Wetlands: Northwest (Region 9). 1988. U. S. Fish and Wildlife Service, Inland Freshwater Ecology Section, St. Petersburg, Florida.

Reed, P.B. Jr. 1993. 1993 Supplement to the list of plant species that occur in wetlands: Northwest (Region 9). USFWS supplement to Biol. Rpt. 88(26.9) May 1988.

King County Code

USDA NRCS & National Technical Committee for Hydric Soils, September 1995. Field Indicators of Hydric Soils in the United States - Version 2.1



The base survey used to prepare this exhibit was provided by Traid Land Development Consultants. Source drawings were modified for visual enhancement.



SCALE: 1" = 800'

Wetland Exhibits - Coversheet

Palmer Section 30



Sewall Wetland Consulting, Inc.

PO Box 880
 Fall City, Washington 98024
 (253) 859-0515 - telephone

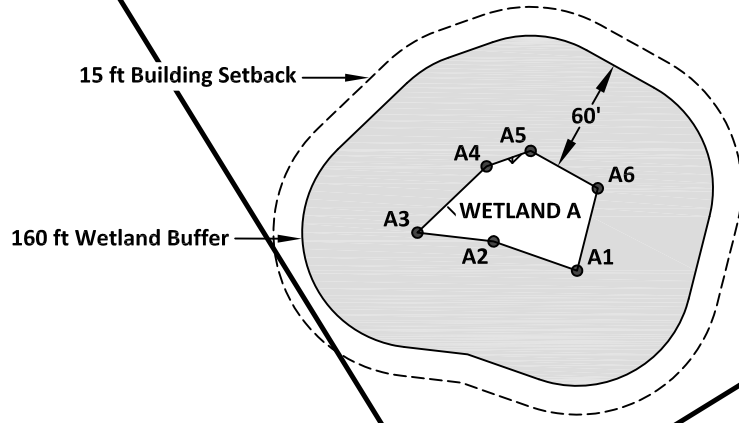
Lot Q

Lot U

Lot T

Lot S

Lot Q



The base survey used to prepare this exhibit was provided by Traid Land Development Consultants. Source drawings were modified for visual enhancement.



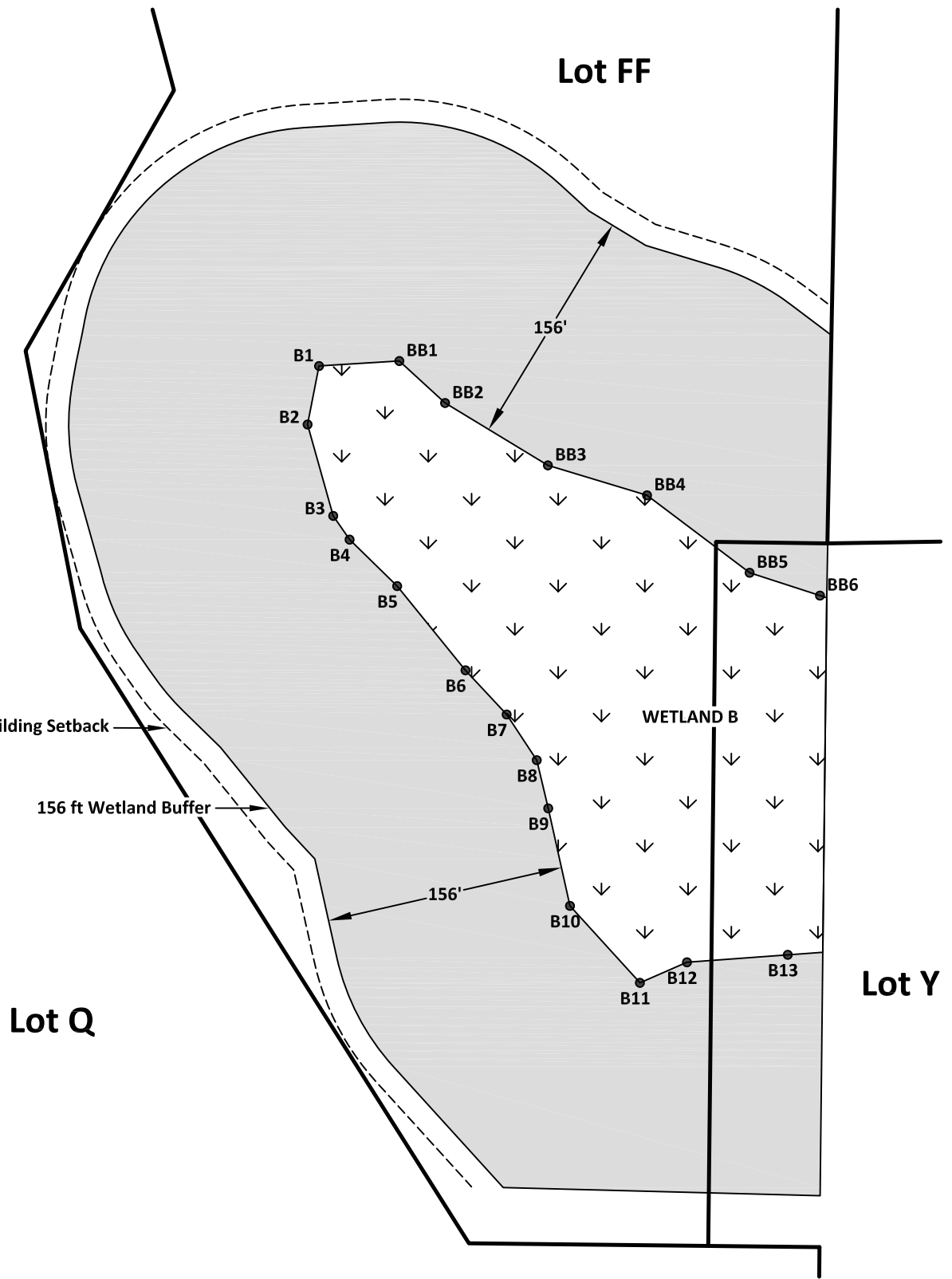
SCALE: 1" = 100'

Wetland Exhibits - Wetland A
Palmer Section 30



Sewall Wetland Consulting, Inc.

PO Box 880
Fall City, Washington 98024
(253) 859-0515 - telephone



The base survey used to prepare this exhibit was provided by Traid Land Development Consultants. Source drawings were modified for visual enhancement.



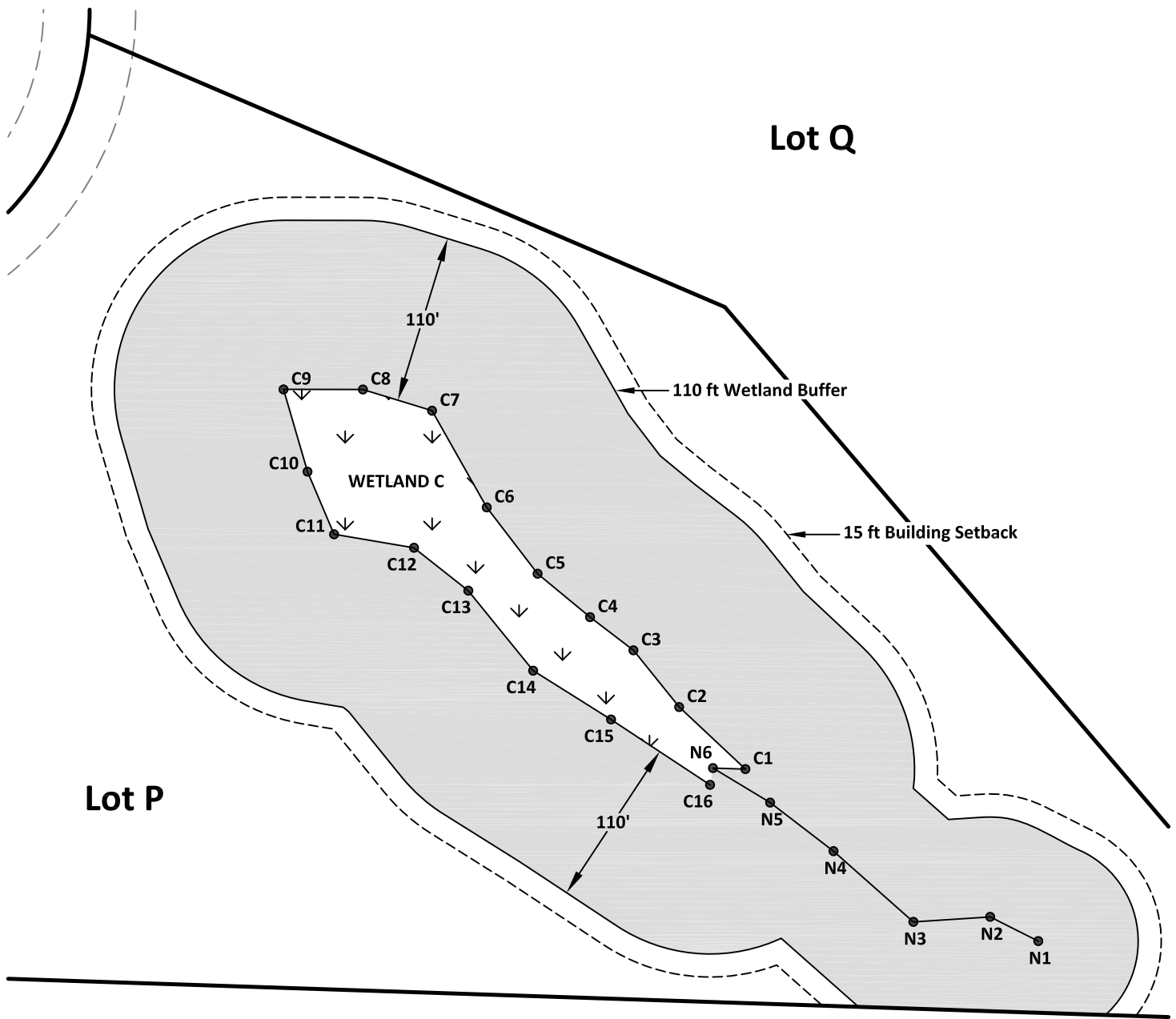
SCALE: 1" = 100'

Wetland Exhibits - Wetland B
Palmer Section 30



Sewall Wetland Consulting, Inc.

PO Box 880
Fall City, Washington 98024
(253) 859-0515 - telephone



The base survey used to prepare this exhibit was provided by Traid Land Development Consultants. Source drawings were modified for visual enhancement.



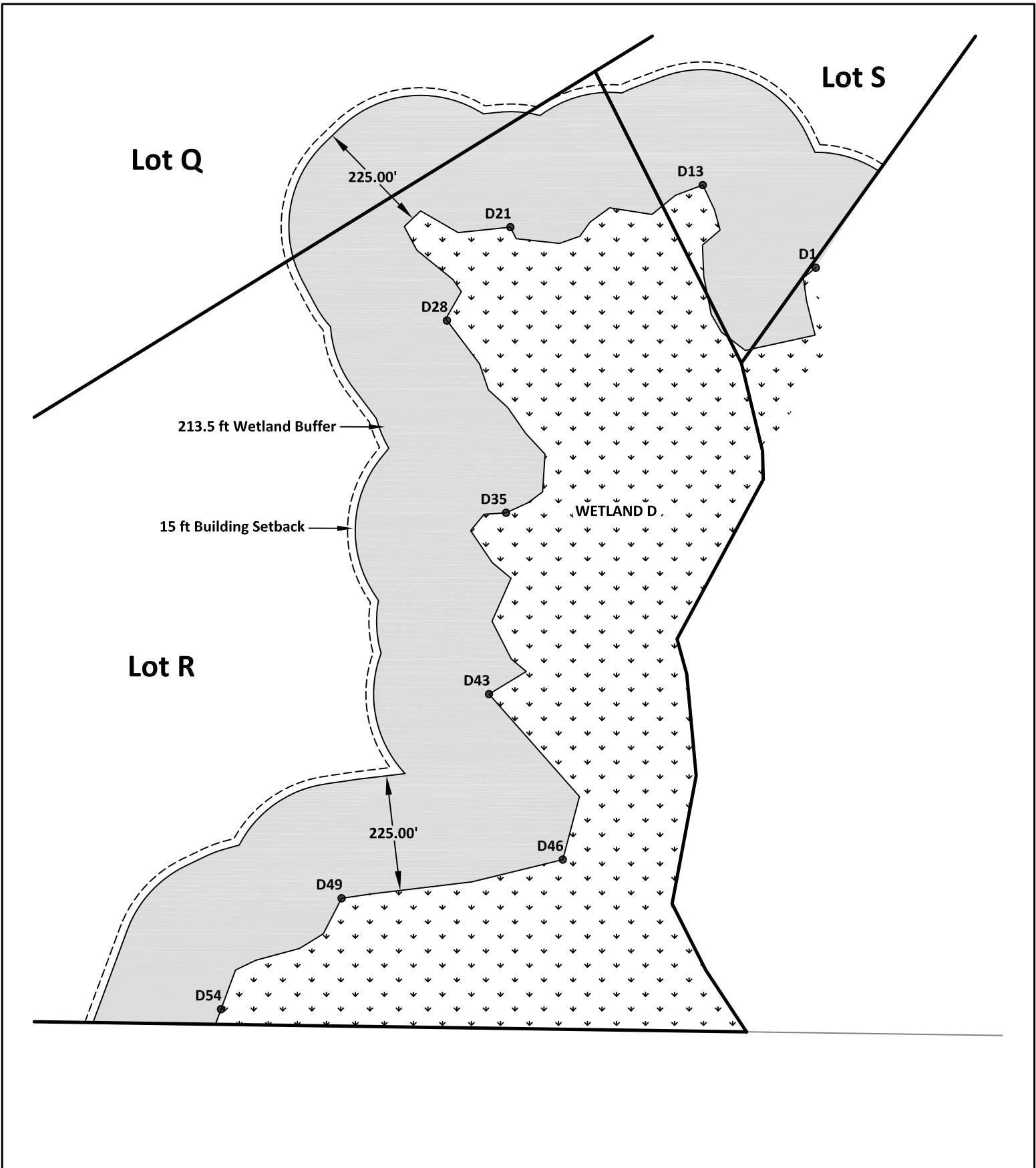
SCALE: 1" = 100'

Wetland Exhibits - Wetland C
Palmer Section 30



Sewall Wetland Consulting, Inc.

PO Box 880
Fall City, Washington 98024
(253) 859-0515 - telephone



The base survey used to prepare this exhibit was provided by Traid Land Development Consultants. Source drawings were modified for visual enhancement.



SCALE: 1" = 200'

Wetland Exhibits - Wetland D

Palmer Section 30



Sewall Wetland Consulting, Inc.

PO Box 880
 Fall City, Washington 98024
 (253) 859-0515 - telephone

Wetland name or number _____

Wetland name or number D

RATING SUMMARY – Western Washington

Name of wetland (or ID #): Wetland D - Fish Lake Date of site visit: 8/16 + 3/21
 Rated by Ed Smit Trained by Ecology? Yes ___ No ___ Date of training _____
 HGM Class used for rating Depress Wetland has multiple HGM classes? Y ___ N ___

NOTE: Form is not complete without the figures requested (figures can be combined).
 Source of base aerial photo/map _____

OVERALL WETLAND CATEGORY _____ (based on functions ___ or special characteristics ___)

1. Category of wetland based on FUNCTIONS

- Category I – Total score = 23 - 27
- Category II – Total score = 20 - 22
- Category III – Total score = 16 - 19
- Category IV – Total score = 9 - 15

FUNCTION	Improving Water Quality	Hydrologic	Habitat	
<i>Circle the appropriate ratings</i>				
Site Potential	H M L	H M L	H M L	
Landscape Potential	H M L	H M L	H M L	
Value	H M L	H M L	H M L	TOTAL
Score Based on Ratings	7	6	8	21

Score for each function based on three ratings (order of ratings is not important)

- 9 = H,H,H
- 8 = H,H,M
- 7 = H,H,L
- 7 = H,M,M
- 6 = H,M,L
- 6 = M,M,M
- 5 = H,L,L
- 5 = M,M,L
- 4 = M,L,L
- 3 = L,L,L

2. Category based on SPECIAL CHARACTERISTICS of wetland

CHARACTERISTIC	CATEGORY
Estuarine	I II
Wetland of High Conservation Value	I
Bog	I
Mature Forest	I
Old Growth Forest	I
Coastal Lagoon	I II
Interdunal	I II III IV
None of the above	

Maps and figures required to answer questions correctly for Western Washington

Depressional Wetlands

Map of:	To answer questions:	Figure #
Cowardin plant classes	D 1.3, H 1.1, H 1.4	
Hydroperiods	D 1.4, H 1.2	
Location of outlet (can be added to map of hydroperiods)	D 1.1, D 4.1	
Boundary of area within 150 ft of the wetland (can be added to another figure)	D 2.2, D 5.2	
Map of the contributing basin	D 4.3, D 5.3	
1 km Polygon: Area that extends 1 km from entire wetland edge - including polygons for accessible habitat and undisturbed habitat	H 2.1, H 2.2, H 2.3	
Screen capture of map of 303(d) listed waters in basin (from Ecology website)	D 3.1, D 3.2	
Screen capture of list of TMDLs for WRIA in which unit is found (from web)	D 3.3	

Riverine Wetlands

Map of:	To answer questions:	Figure #
Cowardin plant classes	H 1.1, H 1.4	
Hydroperiods	H 1.2	
Ponded depressions	R 1.1	
Boundary of area within 150 ft of the wetland (can be added to another figure)	R 2.4	
Plant cover of trees, shrubs, and herbaceous plants	R 1.2, R 4.2	
Width of unit vs. width of stream (can be added to another figure)	R 4.1	
Map of the contributing basin	R 2.2, R 2.3, R 5.2	
1 km Polygon: Area that extends 1 km from entire wetland edge - including polygons for accessible habitat and undisturbed habitat	H 2.1, H 2.2, H 2.3	
Screen capture of map of 303(d) listed waters in basin (from Ecology website)	R 3.1	
Screen capture of list of TMDLs for WRIA in which unit is found (from web)	R 3.2, R 3.3	

Lake Fringe Wetlands

Map of:	To answer questions:	Figure #
Cowardin plant classes	L 1.1, L 4.1, H 1.1, H 1.4	
Plant cover of trees, shrubs, and herbaceous plants	L 1.2	
Boundary of area within 150 ft of the wetland (can be added to another figure)	L 2.2	
1 km Polygon: Area that extends 1 km from entire wetland edge - including polygons for accessible habitat and undisturbed habitat	H 2.1, H 2.2, H 2.3	
Screen capture of map of 303(d) listed waters in basin (from Ecology website)	L 3.1, L 3.2	
Screen capture of list of TMDLs for WRIA in which unit is found (from web)	L 3.3	

Slope Wetlands

Map of:	To answer questions:	Figure #
Cowardin plant classes	H 1.1, H 1.4	
Hydroperiods	H 1.2	
Plant cover of dense trees, shrubs, and herbaceous plants	S 1.3	
Plant cover of dense, rigid trees, shrubs, and herbaceous plants (can be added to figure above)	S 4.1	
Boundary of 150 ft buffer (can be added to another figure)	S 2.1, S 5.1	
1 km Polygon: Area that extends 1 km from entire wetland edge - including polygons for accessible habitat and undisturbed habitat	H 2.1, H 2.2, H 2.3	
Screen capture of map of 303(d) listed waters in basin (from Ecology website)	S 3.1, S 3.2	
Screen capture of list of TMDLs for WRIA in which unit is found (from web)	S 3.3	

Wetland name or number _____

HGM Classification of Wetlands in Western Washington

For questions 1-7, the criteria described must apply to the entire unit being rated.
If the hydrologic criteria listed in each question do not apply to the entire unit being rated, you probably have a unit with multiple HGM classes. In this case, identify which hydrologic criteria in questions 1-7 apply, and go to Question 8.

1. Are the water levels in the entire unit usually controlled by tides except during floods?

NO - go to 2

YES - the wetland class is **Tidal Fringe** - go to 1.1

1.1 Is the salinity of the water during periods of annual low flow below 0.5 ppt (parts per thousand)?

NO - Saltwater Tidal Fringe (Estuarine)

YES - Freshwater Tidal Fringe

If your wetland can be classified as a Freshwater Tidal Fringe use the forms for Riverine wetlands. If it is Saltwater Tidal Fringe it is an Estuarine wetland and is not scored. This method cannot be used to score functions for estuarine wetlands.

2. The entire wetland unit is flat and precipitation is the only source (>90%) of water to it. Groundwater and surface water runoff are NOT sources of water to the unit.

NO - go to 3

YES - The wetland class is **Flats**

If your wetland can be classified as a Flats wetland, use the form for Depressional wetlands.

3. Does the entire wetland unit meet all of the following criteria?

- The vegetated part of the wetland is on the shores of a body of permanent open water (without any plants on the surface at any time of the year) at least 20 ac (8 ha) in size;
- At least 30% of the open water area is deeper than 6.6 ft (2 m).

NO - go to 4

YES - The wetland class is **Lake Fringe (Lacustrine Fringe)**

4. Does the entire wetland unit meet all of the following criteria?

- The wetland is on a slope (*slope can be very gradual*),
- The water flows through the wetland in one direction (unidirectional) and usually comes from seeps. It may flow subsurface, as sheetflow, or in a swale without distinct banks,
- The water leaves the wetland **without being impounded**.

NO - go to 5

YES - The wetland class is **Slope**

NOTE: Surface water does not pond in these type of wetlands except occasionally in very small and shallow depressions or behind hummocks (depressions are usually <3 ft diameter and less than 1 ft deep).

5. Does the entire wetland unit meet all of the following criteria?

- The unit is in a valley, or stream channel, where it gets inundated by overbank flooding from that stream or river,
- The overbank flooding occurs at least once every 2 years.

Wetland name or number _____

NO - go to 6

YES - The wetland class is **Riverine**

NOTE: The Riverine unit can contain depressions that are filled with water when the river is not flooding

6. Is the entire wetland unit in a topographic depression in which water ponds, or is saturated to the surface, at some time during the year? *This means that any outlet, if present, is higher than the interior of the wetland.*

NO - go to 7

YES - The wetland class is **Depressional**

7. Is the entire wetland unit located in a very flat area with no obvious depression and no overbank flooding? The unit does not pond surface water more than a few inches. The unit seems to be maintained by high groundwater in the area. The wetland may be ditched, but has no obvious natural outlet.

NO - go to 8

YES - The wetland class is **Depressional**

8. Your wetland unit seems to be difficult to classify and probably contains several different HGM classes. For example, seeps at the base of a slope may grade into a riverine floodplain, or a small stream within a Depressional wetland has a zone of flooding along its sides. **GO BACK AND IDENTIFY WHICH OF THE HYDROLOGIC REGIMES DESCRIBED IN QUESTIONS 1-7 APPLY TO DIFFERENT AREAS IN THE UNIT** (make a rough sketch to help you decide). Use the following table to identify the appropriate class to use for the rating system if you have several HGM classes present within the wetland unit being scored.

NOTE: Use this table only if the class that is recommended in the second column represents 10% or more of the total area of the wetland unit being rated. If the area of the HGM class listed in column 2 is less than 10% of the unit; classify the wetland using the class that represents more than 90% of the total area.

HGM classes within the wetland unit being rated	HGM class to use in rating
Slope + Riverine	Riverine
Slope + Depressional	Depressional
Slope + Lake Fringe	Lake Fringe
Depressional + Riverine along stream within boundary of depression	Depressional
Depressional + Lake Fringe	Depressional
Riverine + Lake Fringe	Riverine
Salt Water Tidal Fringe and any other class of freshwater wetland	Treat as ESTUARINE

If you are still unable to determine which of the above criteria apply to your wetland, or if you have more than 2 HGM classes within a wetland boundary, classify the wetland as Depressional for the rating.

Wetland name or number D

DEPRESSIONAL AND FLATS WETLANDS	
Water Quality Functions - Indicators that the site functions to improve water quality	
D 1.0. Does the site have the potential to improve water quality?	
D 1.1. Characteristics of surface water outflows from the wetland:	
Wetland is a depression or flat depression (QUESTION 7 on key) with no surface water leaving it (no outlet). points = 3	
Wetland has an intermittently flowing stream or ditch, OR highly constricted permanently flowing outlet. points = 2	
Wetland has an unconstricted, or slightly constricted, surface outlet that is permanently flowing points = 1	2
Wetland is a flat depression (QUESTION 7 on key), whose outlet is a permanently flowing ditch. points = 1	
D 1.2. The soil 2 in below the surface (or duff layer) is true clay or true organic (use NRCS definitions). Yes = 4 No = 0	4
D 1.3. Characteristics and distribution of persistent plants (Emergent, Scrub-shrub, and/or Forested Cowardin classes):	
Wetland has persistent, ungrazed, plants > 95% of area points = 5	
Wetland has persistent, ungrazed, plants > 1/2 of area points = 3	
Wetland has persistent, ungrazed plants > 1/10 of area points = 1	5
Wetland has persistent, ungrazed plants < 1/10 of area points = 0	
D 1.4. Characteristics of seasonal ponding or inundation: This is the area that is ponded for at least 2 months. See description in manual.	
Area seasonally ponded is > 1/2 total area of wetland points = 4	
Area seasonally ponded is > 1/4 total area of wetland points = 2	4
Area seasonally ponded is < 1/4 total area of wetland points = 0	
Total for D 1	15

Rating of Site Potential If score is: 12-16 = H 6-11 = M 0-5 = L Record the rating on the first page

D 2.0. Does the landscape have the potential to support the water quality function of the site?	
D 2.1. Does the wetland unit receive stormwater discharges? Yes = 1 No = 0	1
D 2.2. Is > 10% of the area within 150 ft of the wetland in land uses that generate pollutants? Yes = 1 No = 0	0
D 2.3. Are there septic systems within 250 ft of the wetland? Yes = 1 No = 0	1
D 2.4. Are there other sources of pollutants coming into the wetland that are not listed in questions D 2.1-D 2.3? Source _____ Yes = 1 No = 0	0
Total for D 2	2

Rating of Landscape Potential If score is: 3 or 4 = H 1 or 2 = M 0 = L Record the rating on the first page

D 3.0. Is the water quality improvement provided by the site valuable to society?	
D 3.1. Does the wetland discharge directly (i.e., within 1 mi) to a stream, river, lake, or marine water that is on the 303(d) list? Yes = 1 No = 0	0
D 3.2. Is the wetland in a basin or sub-basin where an aquatic resource is on the 303(d) list? Yes = 1 No = 0	1
D 3.3. Has the site been identified in a watershed or local plan as important for maintaining water quality (answer YES if there is a TMDL for the basin in which the unit is found)? Yes = 2 No = 0	0
Total for D 3	1

Rating of Value If score is: 2-4 = H 2 = M 0 = L Record the rating on the first page

Wetland name or number D

DEPRESSIONAL AND FLATS WETLANDS	
Hydrologic Functions - Indicators that the site functions to reduce flooding and stream degradation	
D 4.0. Does the site have the potential to reduce flooding and erosion?	
D 4.1. Characteristics of surface water outflows from the wetland:	
Wetland is a depression or flat depression with no surface water leaving it (no outlet) points = 4	
Wetland has an intermittently flowing stream or ditch, OR highly constricted permanently flowing outlet points = 2	2
Wetland is a flat depression (QUESTION 7 on key), whose outlet is a permanently flowing ditch points = 1	
Wetland has an unconstricted, or slightly constricted, surface outlet that is permanently flowing points = 0	
D 4.2. Depth of storage during wet periods: Estimate the height of ponding above the bottom of the outlet. For wetlands with no outlet, measure from the surface of permanent water or if dry, the deepest part.	
Marks of ponding are 3 ft or more above the surface or bottom of outlet points = 7	
Marks of ponding between 2 ft to < 3 ft from surface or bottom of outlet points = 5	
Marks are at least 0.5 ft to < 2 ft from surface or bottom of outlet points = 3	7
The wetland is a "headwater" wetland points = 3	
Wetland is flat but has small depressions on the surface that trap water points = 1	
Marks of ponding less than 0.5 ft (6 in) points = 0	
D 4.3. Contribution of the wetland to storage in the watershed: Estimate the ratio of the area of upstream basin contributing surface water to the wetland to the area of the wetland unit itself.	
The area of the basin is less than 10 times the area of the unit points = 5	
The area of the basin is 10 to 100 times the area of the unit points = 3	
The area of the basin is more than 100 times the area of the unit points = 0	0
Entire wetland is in the Flats class points = 5	
Total for D 4	9

Rating of Site Potential If score is: 12-16 = H 6-11 = M 0-5 = L Record the rating on the first page





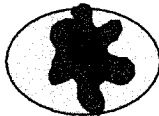

D 5.0. Does the landscape have the potential to support hydrologic functions of the site?	
D 5.1. Does the wetland receive stormwater discharges? Yes = 1 No = 0	1
D 5.2. Is >10% of the area within 150 ft of the wetland in land uses that generate excess runoff? Yes = 1 No = 0	0
D 5.3. Is more than 25% of the contributing basin of the wetland covered with intensive human land uses (residential at >1 residence/ac, urban, commercial, agriculture, etc.)? Yes = 1 No = 0	0
Total for D 5	1

Rating of Landscape Potential If score is: 3 = H 1 or 2 = M 0 = L Record the rating on the first page

D 6.0. Are the hydrologic functions provided by the site valuable to society?	
D 6.1. The unit is in a landscape that has flooding problems. Choose the description that best matches conditions around the wetland unit being rated. Do not add points. Choose the highest score if more than one condition is met.	
The wetland captures surface water that would otherwise flow down-gradient into areas where flooding has damaged human or natural resources (e.g., houses or salmon redds):	
• Flooding occurs in a sub-basin that is immediately down-gradient of unit. points = 2	
• Surface flooding problems are in a sub-basin farther down-gradient. points = 1	
Flooding from groundwater is an issue in the sub-basin. points = 1	
The existing or potential outflow from the wetland is so constrained by human or natural conditions that the water stored by the wetland cannot reach areas that flood. Explain why _____ points = 0	
There are no problems with flooding downstream of the wetland. points = 0	
D 6.2. Has the site been identified as important for flood storage or flood conveyance in a regional flood control plan? Yes = 2 No = 0	0
Total for D 6	1

Rating of Value If score is: 2-4 = H 1 = M 0 = L Record the rating on the first page

Wetland name or number _____

These questions apply to wetlands of all HGM classes.		
HABITAT FUNCTIONS - Indicators that site functions to provide important habitat		
H 1.0. Does the site have the potential to provide habitat?		
<p>H 1.1. Structure of plant community: <i>Indicators are Cowardin classes and strata within the Forested class. Check the Cowardin plant classes in the wetland. Up to 10 patches may be combined for each class to meet the threshold of ¼ ac or more than 10% of the unit if it is smaller than 2.5 ac. Add the number of structures checked.</i></p> <p><input checked="" type="checkbox"/> Aquatic bed 4 structures or more: points = 4</p> <p><input checked="" type="checkbox"/> Emergent 3 structures: points = 2</p> <p><input checked="" type="checkbox"/> Scrub-shrub (areas where shrubs have > 30% cover) 2 structures: points = 1</p> <p><input checked="" type="checkbox"/> Forested (areas where trees have > 30% cover) 1 structure: points = 0</p> <p><i>If the unit has a Forested class, check if:</i></p> <p><input checked="" type="checkbox"/> The Forested class has 3 out of 5 strata (canopy, sub-canopy, shrubs, herbaceous, moss/ground-cover) that each cover 20% within the Forested polygon</p>	4	
H 1.2. Hydroperiods		
<p>Check the types of water regimes (hydroperiods) present within the wetland. The water regime has to cover more than 10% of the wetland or ¼ ac to count (see text for descriptions of hydroperiods).</p> <p><input checked="" type="checkbox"/> Permanently flooded or inundated 4 or more types present: points = 3</p> <p><input checked="" type="checkbox"/> Seasonally flooded or inundated 3 types present: points = 2</p> <p><input checked="" type="checkbox"/> Occasionally flooded or inundated 2 types present: points = 1</p> <p><input checked="" type="checkbox"/> Saturated only 1 type present: points = 0</p> <p><input checked="" type="checkbox"/> Permanently flowing stream or river in, or adjacent to, the wetland</p> <p><input checked="" type="checkbox"/> Seasonally flowing stream in, or adjacent to, the wetland</p> <p><input checked="" type="checkbox"/> Lake Fringe wetland 2 points</p> <p><input checked="" type="checkbox"/> Freshwater tidal wetland 2 points</p>	3	
H 1.3. Richness of plant species		
<p>Count the number of plant species in the wetland that cover at least 10 ft². Different patches of the same species can be combined to meet the size threshold and you do not have to name the species. Do not include Eurasian milfoil, reed canarygrass, purple loosestrife, Canadian thistle</p> <p>If you counted: > 19 species points = 2</p> <p>5 - 19 species points = 1</p> <p>< 5 species points = 0</p>	2	
H 1.4. Interspersion of habitats		
<p>Decide from the diagrams below whether interspersion among Cowardin plants classes (described in H 1.1), or the classes and unvegetated areas (can include open water or mudflats) is high, moderate, low, or none. <i>If you have four or more plant classes or three classes and open water, the rating is always high.</i></p> <div style="display: flex; justify-content: space-around; align-items: center;"> <div style="text-align: center;">  <p>None = 0 points</p> </div> <div style="text-align: center;">  <p>Low = 1 point</p> </div> <div style="text-align: center;">  <p>Moderate = 2 points</p> </div> </div> <div style="display: flex; justify-content: space-around; align-items: center; margin-top: 20px;"> <div style="text-align: center;">  </div> <div style="text-align: center;">  </div> <div style="text-align: center;">  </div> </div> <p>All three diagrams in this row are HIGH = 3 points</p>		3

Wetland name or number _____

H 1.5. Special habitat features:		
<p>Check the habitat features that are present in the wetland. <i>The number of checks is the number of points.</i></p> <p><input checked="" type="checkbox"/> Large, downed, woody debris within the wetland (> 4 in diameter and 6 ft long).</p> <p><input checked="" type="checkbox"/> Standing snags (dbh > 4 in) within the wetland</p> <p><input checked="" type="checkbox"/> Undercut banks are present for at least 6.6 ft (2 m) and/or overhanging plants extends at least 3.3 ft (1 m) over a stream (or ditch) in, or contiguous with the wetland, for at least 33 ft (10 m)</p> <p><input checked="" type="checkbox"/> Stable steep banks of fine material that might be used by beaver or muskrat for denning (> 30 degree slope) OR signs of recent beaver activity are present (<i>cut shrubs or trees that have not yet weathered where wood is exposed</i>)</p> <p><input checked="" type="checkbox"/> At least ¼ ac of thin-stemmed persistent plants or woody branches are present in areas that are permanently or seasonally inundated (<i>structures for egg-laying by amphibians</i>)</p> <p><input type="checkbox"/> Invasive plants cover less than 25% of the wetland area in every stratum of plants (see H 1.1 for list of strata)</p>		4
Total for H 1		16
Rating of Site Potential If score is: <u>15</u> -18 = H <u>7</u> -14 = M <u>0</u> -6 = L		<i>Record the rating on the first page</i>
H 2.0. Does the landscape have the potential to support the habitat functions of the site?		
H 2.1. Accessible habitat (include only habitat that directly abuts wetland unit).		
<p>Calculate: <u>45</u> % undisturbed habitat <u>5</u> + [(% moderate and low intensity land uses)/2] = <u>92</u> %</p> <p>If total accessible habitat is:</p> <p>> 1/3 (33.3%) of 1 km Polygon points = 3</p> <p>20-33% of 1 km Polygon points = 2</p> <p>10-19% of 1 km Polygon points = 1</p> <p>< 10% of 1 km Polygon points = 0</p>		3
H 2.2. Undisturbed habitat in 1 km Polygon around the wetland.		
<p>Calculate: <u>55</u> % undisturbed habitat <u>2</u> + [(% moderate and low intensity land uses)/2] = <u>65</u> %</p> <p>Undisturbed habitat > 50% of Polygon points = 3</p> <p>Undisturbed habitat 10-50% and in 1-3 patches points = 2</p> <p>Undisturbed habitat 10-50% and > 3 patches points = 1</p> <p>Undisturbed habitat < 10% of 1 km Polygon points = 0</p>		3
H 2.3. Land use intensity in 1 km Polygon: If		
<p>> 50% of 1 km Polygon is high intensity points = (-2)</p> <p>≤ 50% of 1 km Polygon is high intensity points = 0</p>		0
Total for H 2		6
Rating of Landscape Potential If score is: <u>4</u> -6 = H <u>1</u> -3 = M <u>< 1</u> = L		<i>Record the rating on the first page</i>
H 3.0. Is the habitat provided by the site valuable to society?		
H 3.1. Does the site provide habitat for species valued in laws, regulations, or policies? <i>Choose only the highest score that applies to the wetland being rated.</i>		
<p>Site meets ANY of the following criteria: points = 2</p> <p><input type="checkbox"/> It has 3 or more priority habitats within 100 m (see next page)</p> <p><input type="checkbox"/> It provides habitat for Threatened or Endangered species (any plant or animal on the state or federal lists)</p> <p><input type="checkbox"/> It is mapped as a location for an individual WDFW priority species</p> <p><input type="checkbox"/> It is a Wetland of High Conservation Value as determined by the Department of Natural Resources</p> <p><input type="checkbox"/> It has been categorized as an important habitat site in a local or regional comprehensive plan, in a Shoreline Master Plan, or in a watershed plan</p> <p>Site has 1 or 2 priority habitats (listed on next page) within 100 m points = 1</p> <p>Site does not meet any of the criteria above points = 0</p>		1
Rating of Value If score is: <u>2</u> = H <u>1</u> = M <u>0</u> = L		<i>Record the rating on the first page</i>

Wetland name or number _____

WDFW Priority Habitats

Priority habitats listed by WDFW (see complete descriptions of WDFW priority habitats, and the counties in which they can be found, in: Washington Department of Fish and Wildlife, 2008. Priority Habitat and Species List. Olympia, Washington. 177 pp. <http://wdfw.wa.gov/publications/00165/wdfw00165.pdf> or access the list from here: <http://wdfw.wa.gov/conservation/phs/list/>)

Count how many of the following priority habitats are within 330 ft (100 m) of the wetland unit: **NOTE:** This question is independent of the land use between the wetland unit and the priority habitat.

- **Aspen Stands:** Pure or mixed stands of aspen greater than 1 ac (0.4 ha).
- **Biodiversity Areas and Corridors:** Areas of habitat that are relatively important to various species of native fish and wildlife (full descriptions in WDFW PHS report).
- **Herbaceous Balds:** Variable size patches of grass and forbs on shallow soils over bedrock.
- **Old-growth/Mature forests:** **Old-growth west of Cascade crest** – Stands of at least 2 tree species, forming a multi-layered canopy with occasional small openings; with at least 8 trees/ac (20 trees/ha) > 32 in (81 cm) dbh or > 200 years of age. **Mature forests** – Stands with average diameters exceeding 21 in (53 cm) dbh; crown cover may be less than 100%; decay, decadence, numbers of snags, and quantity of large downed material is generally less than that found in old-growth; 80-200 years old west of the Cascade crest.
- **Oregon White Oak:** Woodland stands of pure oak or oak/conifer associations where canopy coverage of the oak component is important (full descriptions in WDFW PHS report p. 158 – see web link above).
- **Riparian:** The area adjacent to aquatic systems with flowing water that contains elements of both aquatic and terrestrial ecosystems which mutually influence each other.
- **Westside Prairies:** Herbaceous, non-forested plant communities that can either take the form of a dry prairie or a wet prairie (full descriptions in WDFW PHS report p. 161 – see web link above).
- **Instream:** The combination of physical, biological, and chemical processes and conditions that interact to provide functional life history requirements for instream fish and wildlife resources.
- **Nearshore:** Relatively undisturbed nearshore habitats. These include Coastal Nearshore, Open Coast Nearshore, and Puget Sound Nearshore. (full descriptions of habitats and the definition of relatively undisturbed are in WDFW report – see web link on previous page).
- **Caves:** A naturally occurring cavity, recess, void, or system of interconnected passages under the earth in soils, rock, ice, or other geological formations and is large enough to contain a human.
- **Cliffs:** Greater than 25 ft (7.6 m) high and occurring below 5000 ft elevation.
- **Talus:** Homogenous areas of rock rubble ranging in average size 0.5 - 6.5 ft (0.15 - 2.0 m), composed of basalt, andesite, and/or sedimentary rock, including riprap slides and mine tailings. May be associated with cliffs.
- **Snags and Logs:** Trees are considered snags if they are dead or dying and exhibit sufficient decay characteristics to enable cavity excavation/use by wildlife. Priority snags have a diameter at breast height of > 20 in (51 cm) in western Washington and are > 6.5 ft (2 m) in height. Priority logs are > 12 in (30 cm) in diameter at the largest end, and > 20 ft (6 m) long.

Note: All vegetated wetlands are by definition a priority habitat but are not included in this list because they are addressed elsewhere.

Wetland name or number _____

CATEGORIZATION BASED ON SPECIAL CHARACTERISTICS

Wetland Type	Category
Check off any criteria that apply to the wetland. Circle the category when the appropriate criteria are met.	
SC 1.0. Estuarine wetlands Does the wetland meet the following criteria for Estuarine wetlands? — The dominant water regime is tidal, — Vegetated, and — With a salinity greater than 0.5 ppt Yes—Go to SC 1.1 No= Not an estuarine wetland	
SC 1.1. Is the wetland within a National Wildlife Refuge, National Park, National Estuary Reserve, Natural Area Preserve, State Park or Educational, Environmental, or Scientific Reserve designated under WAC 332-30-151? Yes = Category I No - Go to SC 1.2	Cat. I
SC 1.2. Is the wetland unit at least 1 ac in size and meets at least two of the following three conditions? — The wetland is relatively undisturbed (has no diking, ditching, filling, cultivation, grazing, and has less than 10% cover of non-native plant species. (If non-native species are <i>Spartina</i> , see page 25) — At least ¼ of the landward edge of the wetland has a 100 ft buffer of shrub, forest, or un-grazed or un-mowed grassland. — The wetland has at least two of the following features: tidal channels, depressions with open water, or contiguous freshwater wetlands. Yes = Category I No = Category II	Cat. I Cat. II
SC 2.0. Wetlands of High Conservation Value (WHCV) SC 2.1. Has the WA Department of Natural Resources updated their website to include the list of Wetlands of High Conservation Value? Yes – Go to SC 2.2 No – Go to SC 2.3 SC 2.2. Is the wetland listed on the WDNR database as a Wetland of High Conservation Value? Yes = Category I No = Not a WHCV SC 2.3. Is the wetland in a Section/Township/Range that contains a Natural Heritage wetland? http://www1.dnr.wa.gov/nhp/refdesk/datasearch/wnhpwetlands.pdf Yes – Contact WNHP/WDNR and go to SC 2.4 No = Not a WHCV SC 2.4. Has WDNR identified the wetland within the S/T/R as a Wetland of High Conservation Value and listed it on their website? Yes = Category I No = Not a WHCV	Cat. I
SC 3.0. Bogs Does the wetland (or any part of the unit) meet both the criteria for soils and vegetation in bogs? Use the key below. If you answer YES you will still need to rate the wetland based on its functions.	
SC 3.1. Does an area within the wetland unit have organic soil horizons, either peats or mucks, that compose 16 in or more of the first 32 in of the soil profile? Yes – Go to SC 3.3 No – Go to SC 3.2 SC 3.2. Does an area within the wetland unit have organic soils, either peats or mucks, that are less than 16 in deep over bedrock, or an impermeable hardpan such as clay or volcanic ash, or that are floating on top of a lake or pond? Yes – Go to SC 3.3 No = Is not a bog SC 3.3. Does an area with peats or mucks have more than 70% cover of mosses at ground level, AND at least a 30% cover of plant species listed in Table 4? Yes = Is a Category I bog No – Go to SC 3.4 NOTE: If you are uncertain about the extent of mosses in the understory, you may substitute that criterion by measuring the pH of the water that seeps into a hole dug at least 16 in deep. If the pH is less than 5.0 and the plant species in Table 4 are present, the wetland is a bog.	
SC 3.4. Is an area with peats or mucks forested (> 30% cover) with Sitka spruce, subalpine fir, western red cedar, western hemlock, lodgepole pine, quaking aspen, Engelmann spruce, or western white pine, AND any of the species (or combination of species) listed in Table 4 provide more than 30% of the cover under the canopy? Yes = Is a Category I bog No = Is not a bog	Cat. I



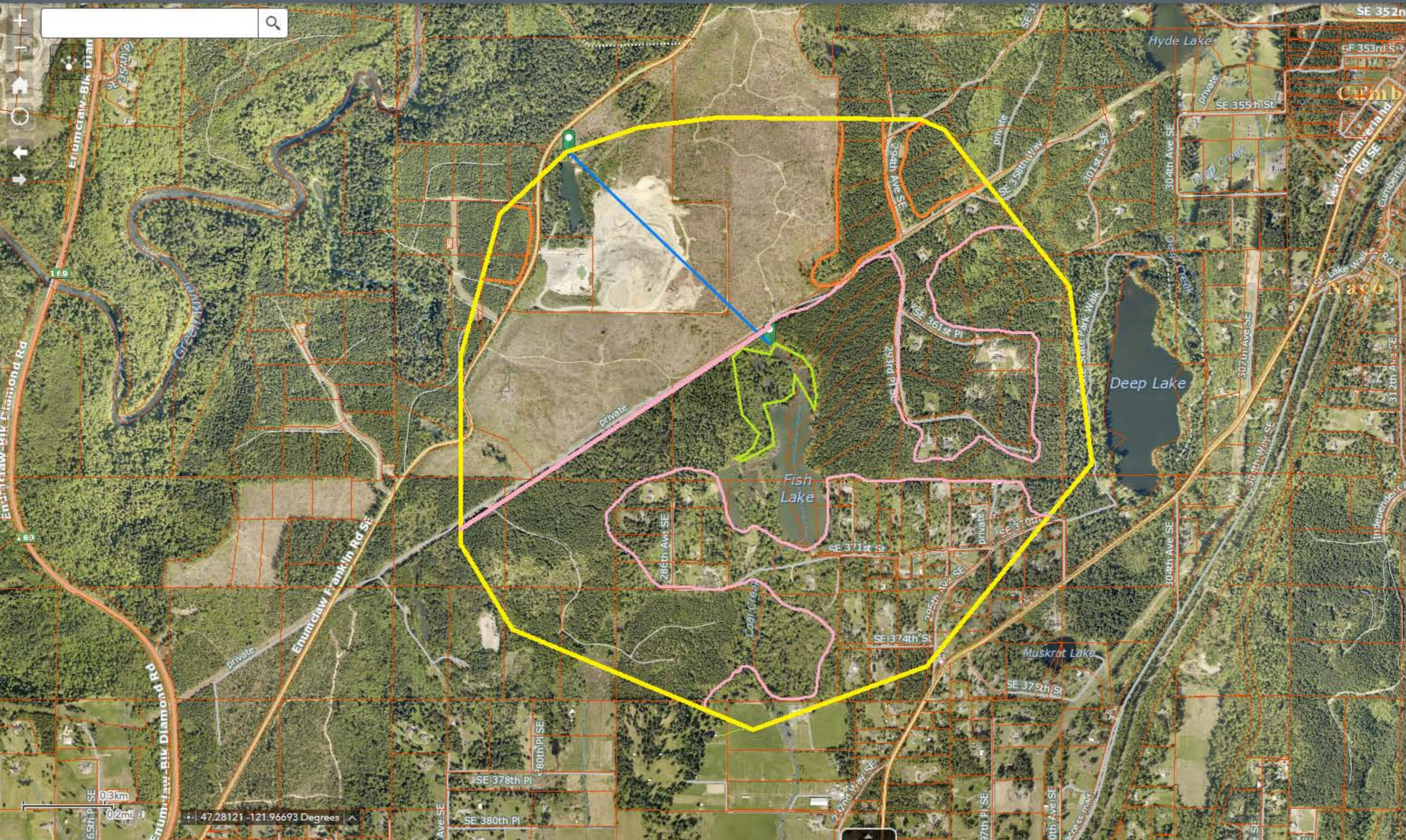
Measure (simple)

Feet

Measurement Result

170 Feet

Clear



Measure (simple)

Measure Measure (simple) Measure (advanced) | Kilometers ▼

Measurement Result
 1 Kilometers



Water Quality Atlas Map

[Legend](#)
[Filter](#)
[Zoom](#)
[Tools](#)
[Home](#)
[Add/Remove Map Data](#)
[My Maps](#)
[Print](#)
[Share](#)
[About](#)

[Basic](#)
[Drawing](#)
[Other](#)

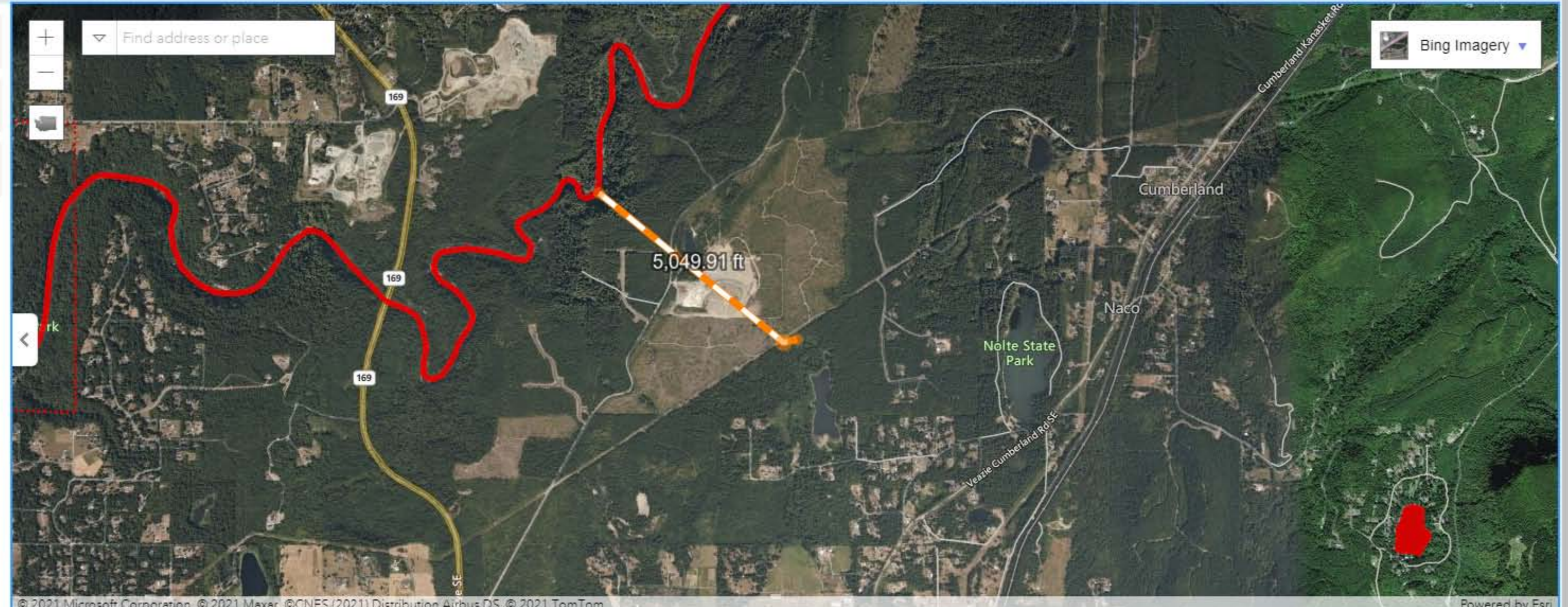
[Keyboard Identify](#)
[Measure Distance](#)
[Measure Area](#)
[Image Service](#)

Usage:
 Click on map to add measure points. Double-click to finish.

Unit
 Feet

Distance
 5,049.91 ft

[New measurement](#)



Assessed Water/Sediment Filter Applied Clear filters Zoom to selection Table to CSV

Find	Listing ID	Assessment Unit ID	Category	Medium	Parameter	Details
	66746	170200011202_01_01	5	Water	Dissolved Oxygen	View
	11253	170200050203_01_01	5	Water	Temperature	View
	42784	170200050203_01_01	5	Water	Dissolved Oxygen	View

Show 5 entries Showing 1 to 5 of 4,548 entries First Previous Next Last