

Map Legend

New on-street parking location

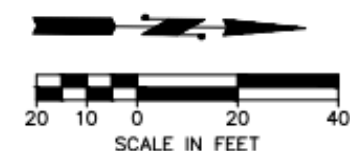


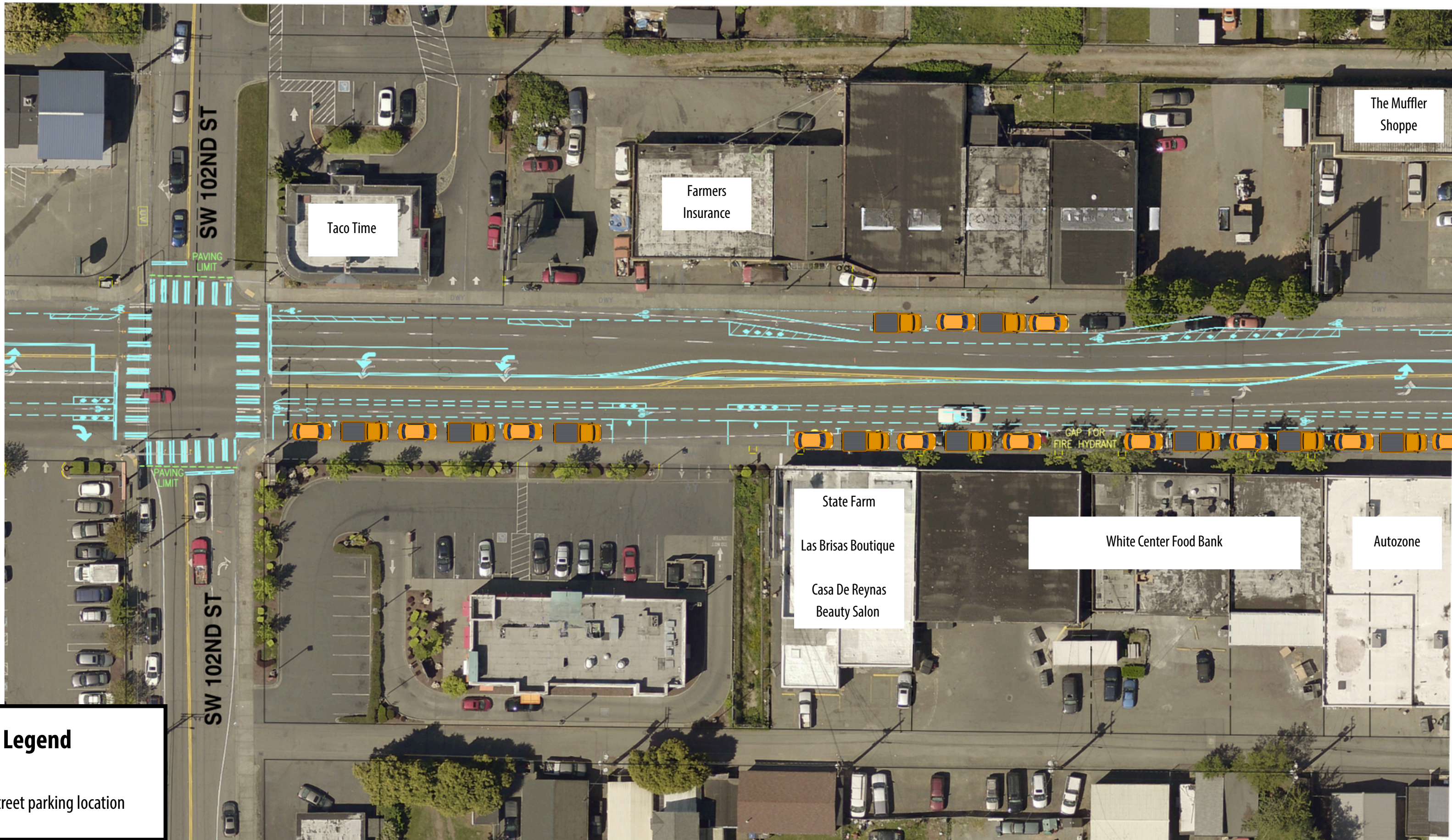


KING COUNTY DEPT. OF LOCAL SERVICES
LEON RICHARDSON, DIRECTOR

16th Ave SW Pedestrian Safety Improvements & Traffic Calming Project

Striping and Parking between SW 104th St and SW 102nd St





Map Legend



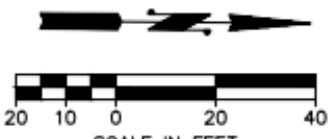
New on-street parking location



KING COUNTY DEPT. OF LOCAL SERVICES
LEON RICHARDSON, DIRECTOR

16th Ave SW Pedestrian Safety Improvements & Traffic Calming Project

Striping and Parking between SW 102nd St and SW 100th St



Map Legend



New on-street parking location



KING COUNTY DEPT. OF LOCAL SERVICES
LEON RICHARDSON, DIRECTOR

16th Ave SW Pedestrian Safety Improvements & Traffic Calming Project

Striping and Parking at SW 100th St and the White Center Cut-Off

