

# Pedestrian Safety Improvements & Traffic Calming Project

16th Avenue SW between SW 100th and SW 107th streets



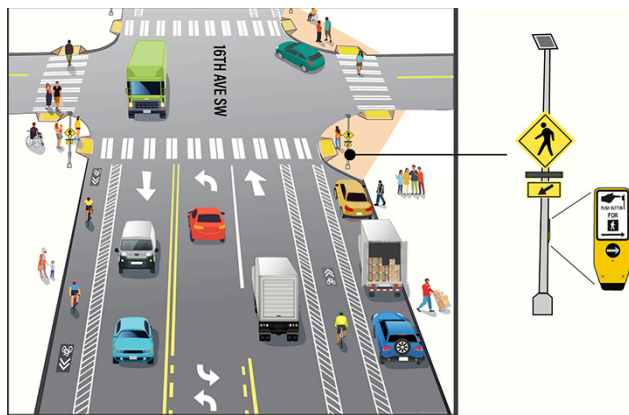
**King County**

Department of Local Services

**Road Services Division**

## Project Overview

This project will make it safer for people to travel along 16th Avenue SW between SW 100th Street and SW 107th Street in White Center. We plan to begin this work in summer and could go through early fall, depending on weather and equipment availability.



*Safety improvements coming to 16th Avenue SW.*

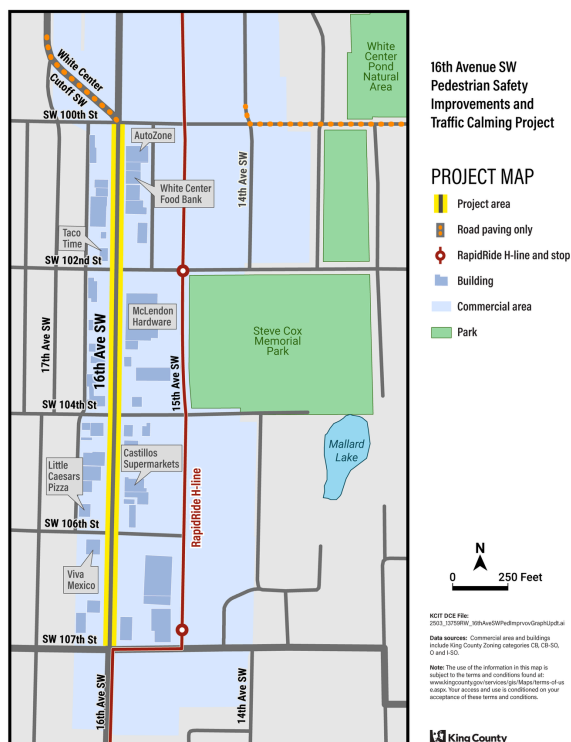
## These improvements include:

- Safer street crossings, clearer signs, & curb extensions at two intersections to help drivers see pedestrians in the crosswalk.
- Roadway re-striped to have one vehicle travel lane and a dedicated bike lane in each direction.
- Center turn lane for safer left turns.
- Number of on-street parking spaces increases from 43 to 46.

## Expect night construction in early summer 2025

The county will repave the road at night, Monday - Friday, on 16th Ave SW between the White Center Cutoff (north of SW 100th St.) and SW 107th St. We also will pave a section of SW 100th St between 14th Ave SW to just west of 11th Ave SW. Additional safety improvements will happen after paving is complete.

**Weeknight work hours:** 6 p.m. to 4 a.m. the following day.

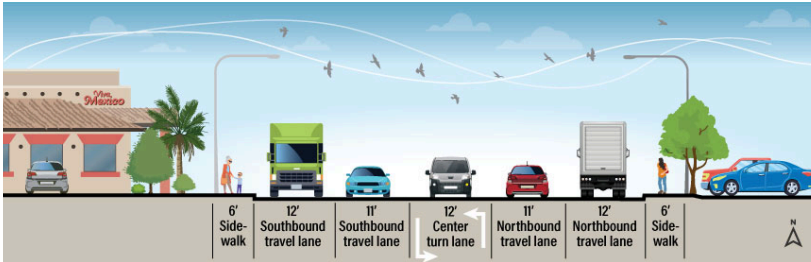


**Pedestrian Safety & Traffic Calming Project:**  
KingCounty.gov/16thAveSW

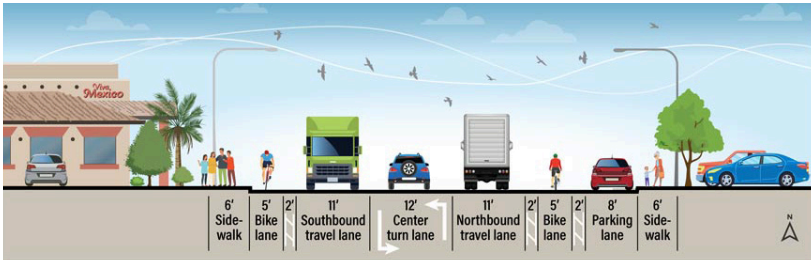
**Contact:** Road Services Communications  
AskLocalServices@KingCounty.gov | 206-477-3800

# Why we are doing this project

We want to make this part of 16th Avenue SW safer for everyone. Roads with a single travel lane in each direction and a center turn lane have slower, calmer traffic. Studies show that the safety improvements like the ones included in this project can reduce the number of collisions.



The image above shows what 16th Avenue SW between SW 100th and SW 107th streets look like today. The road currently has two travel lanes in each direction and a center turn lane. There are no bicycle lanes on this road.



The image above shows what 16th Avenue SW between SW 100th and SW 107th streets will look like once the project is complete.

Find more information on the website



Click this icon on the website for translated material

Sign up for White Center Road Alerts



To request this document in another format or language, please call 206-477-8100 (Relay 711)

Click this icon on the website for translated material

Si aad u codsato dokumentigan qaab kale ama af kale, fadlan wac 206-477-8100 (wac 711)

ដើម្បីស្នើសុំឯកសារនេះជាទម្រង់ ឬភាសាផ្សេងទៀត សូមទូរស័ព្ទទៅលេខ 206-477-8100 (ចុចលេខ 711)

Để yêu cầu tài liệu này ở định dạng hoặc ngôn ngữ khác, vui lòng gọi 206-477-8100 (quay số 711)

لطلب هذا المستند بتنسيق أو لغة أخرى ، يرجى الاتصال بالرقم 206-477-8100 اتصل بالرقم 711

Para solicitar esta información en Español, sírvase llamar al 206-477-8100 (Marque 711)

**Title VI:** It is King County’s policy to assure that no person shall, on the grounds of race, color or national origin, as provided by Title VI of the Civil Rights Act of 1964, be excluded from participation in, be denied the benefits of, or be otherwise discriminated against under any of its federally funded programs and activities. Any person who believes their Title VI protection has been violated, may file a complaint with King County, please contact Lydia Reynolds-Jones at 206-477-8100.

**ADA:** Materials can be provided in a different language for non-English speakers or in alternative formats such as large print, Braille, or audio for persons with disabilities. Please call Road Services at 206-477-8100. Persons who are deaf or hard of hearing may contact us through the Washington Relay Service at 7-1-1.