

# Pedestrian Safety Improvements and Traffic Calming Project

16th Ave SW from SW 100th Street to SW 107th Street



**King County**

Local Services

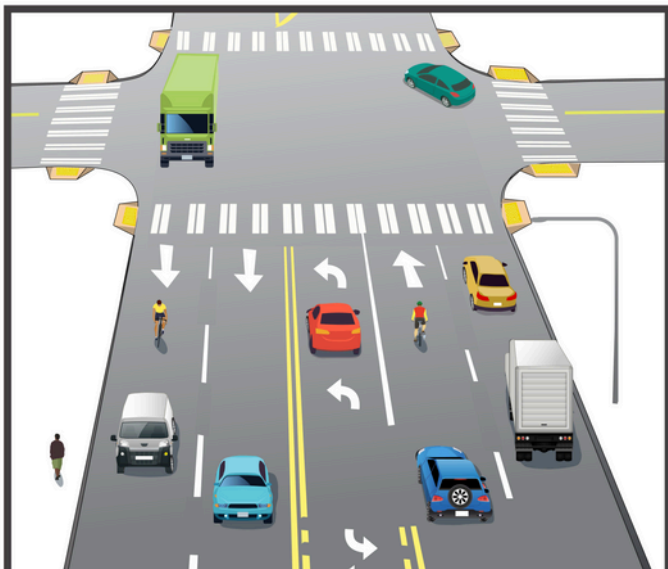
**Road Services Division**

## Project overview

This project will make it safer for people to walk, ride a bike, or travel in a vehicle along 16th Avenue SW between SW 100th Street and SW 107th Street in White Center.

## The main road improvements will be:

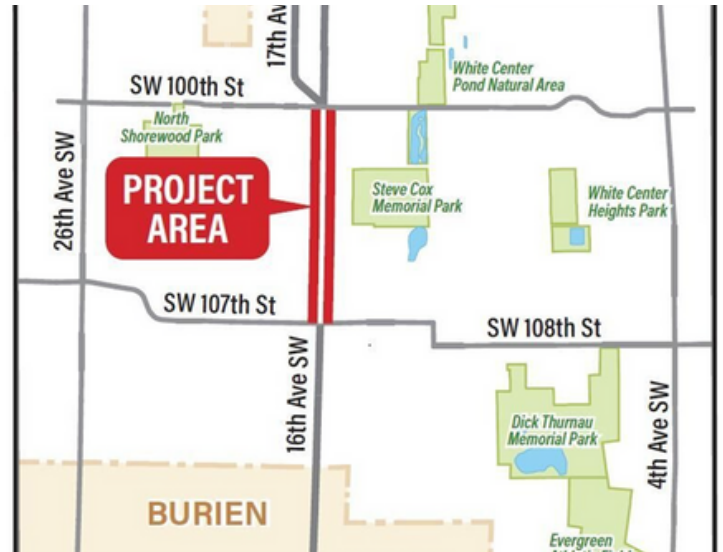
- Restriping to create one vehicle travel lane in each direction.
- Dedicated five-foot wide bike lanes with two feet of extra space on both sides of bike lane (buffer zone).
- Rapid flashing lights and pedestrian crossing signs at intersections without traffic signals.
- A center turn lane down the middle of the road that allows traffic to move freely in the main travel lane.



Existing roadway - no bike lanes, extended curbing or safety lights.

## On-street parking will change

Parking spaces on 16th Ave. SW between SW 100th and SW 107th streets will change to 34 parking spaces after all the safety upgrades.



The area highlighted in red is the main construction zone for this project.

## Why we are doing this project:

This project will create dedicated space for all users. There have been several collisions involving pedestrians. Safety improvements are needed.

Studies show that the improvements like the ones included in this project can reduce the number of collisions involving pedestrians and cars up to one-third.

## Timeline:

- **Construction begins; Spring/Summer 2025**
- **Project complete: Winter 2025**

## Contact us:

Broch Bender, Communications

(206) 263-1189

Email: [bbender@kingcounty.gov](mailto:bbender@kingcounty.gov)

## Project website:

[Kingcounty.gov/16thAveSW](http://Kingcounty.gov/16thAveSW)



# Pedestrian Safety Improvements and Traffic Calming Project

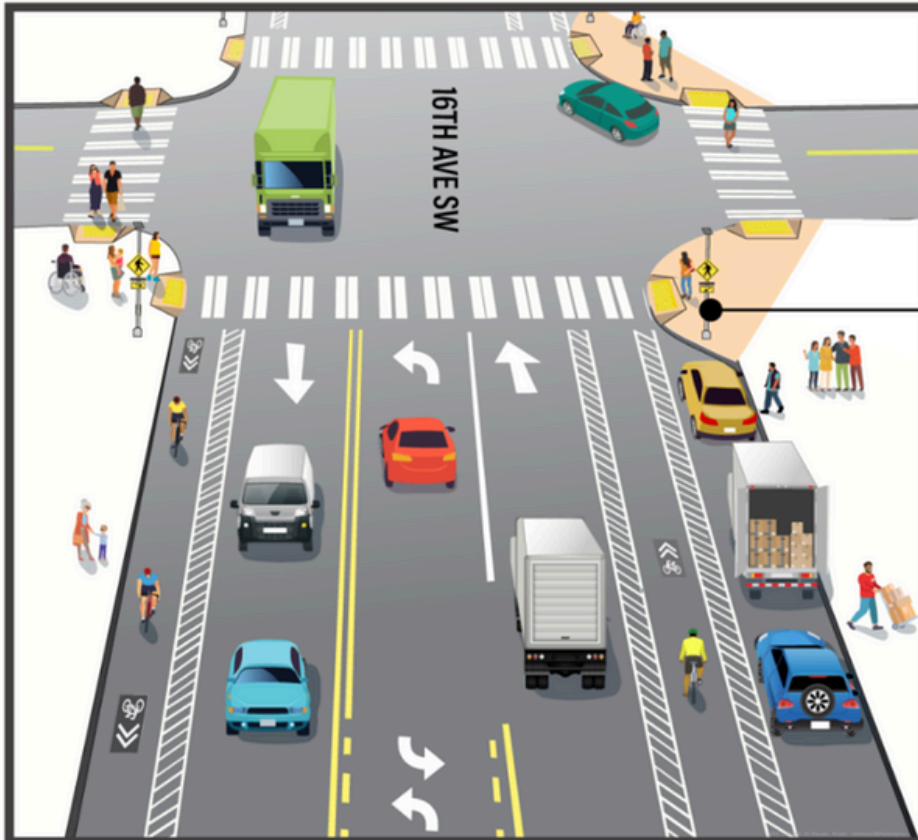
16th Ave SW from SW 100th Street to SW 107th Street



**King County**

Local Services

**Road Services Division**



*New roadway design - dedicated bike lanes, sidewalk extensions, dedicated center turn lane, and brightly marked crosswalks.*

**Title VI:** It is King County's policy to assure that no person shall, on the grounds of race, color or national origin, as provided by Title VI of the Civil Rights Act of 1964, be excluded from participation in, be denied the benefits of, or be otherwise discriminated against under any of its federally funded programs and activities. Any person who believes their Title VI protection has been violated, may file a complaint with King County, please contact Lydia Reynolds-Jones at 206-477-8100.

**ADA:** Materials can be provided in a different language for non-English speakers or in alternative formats such as large print, Braille, or audio for persons with disabilities. Please call Road Services at 206-477-8100. Persons who are deaf or hard of hearing may contact us through the Washington Relay Service at 7-1-1.