

## Baring Bridge Replacement Project Online and Mail Survey Questions

**Background:** Baring Bridge is a King County-owned and maintained timber suspension bridge located on NE Index Creek Road over the South Fork of the Skykomish River near the Town of Skykomish and US Route 2. It was originally built in 1930 and in 1999 was designated a Historic Landmark by King County. The bridge provides sole access to about 170 properties, including more than 40 residences, in the unincorporated community of Baring, WA. The Baring Bridge Replacement Project is a permanent solution with a long-term effort to plan, select, design and construct a new Baring Bridge.

**Why the Project is Necessary:** The existing bridge does not meet today's design standards and due to the weight restriction, this bridge is classified as structurally deficient. Much of the bridge has been repaired, retrofitted, or replaced, but the timber and steel cable elements are continuing to age. Replacing isolated members and retrofitting problem areas have worked as temporary fixes but a permanent solution is necessary.

**Purpose of the Survey:** King County is reaching out to Baring community members at this time to: obtain early input and a sense of community views on this Baring Bridge project; understand how King County can best communicate with the Baring community through all phases of this project over the coming months and years (planning, design, and construction); and understand how to best answer the community's questions, share information, and hear project concerns or ideas. Following public and stakeholder input, a preferred bridge alternative will be selected and design will begin in first quarter of 2019.

### For More Information:

- Visit the Baring Bridge Replacement Project webpage for updates and to sign-up for Road Alert emails or text messages: [www.kingcounty.gov/Baring Bridge](http://www.kingcounty.gov/Baring Bridge)
- Contact Brent Champaco, Community Relations Planner / Public Information Officer, 206-477-9094 or [Brent.Champaco@kingcounty.gov](mailto:Brent.Champaco@kingcounty.gov)

**We want your input! Please complete and mail\* the following survey by 1/26/19 to:**

King County Dept. of Local Services  
Road Services Division  
Engineering Services Section  
201 S Jackson Street, MS KSC-LS-0315  
Seattle, WA 98104-3856  
*(self-addressed postage-paid envelope included)*

*\*Online Survey is also available at [www.kingcounty.gov/BaringBridge](http://www.kingcounty.gov/BaringBridge)*

**Please begin the survey on the next page of this document.**

**Introductory Questions:**

- 1) How long have you been a member of the Baring community?
  - Less than 1 year
  - 1-5 years
  - More than 5 years
  
- 2) About how frequently do you cross the Baring Bridge on average?
  - Several times per day
  - Every day or nearly every day
  - A few times per week
  - A few times per month
  - A few times per year
  - Other: *please write in space below*

**Experience with and thoughts about the existing Baring Bridge:**

*Please write in the space below each question.*

- 1) How does the existing bridge affect you (or residents/visitors to your property) day-to-day, positively or negatively?

*Continue survey on next page*

2) What qualities do you like most about the existing Baring Bridge? How do these qualities affect your life in Baring?

3) What qualities do you not like about the existing Baring Bridge? How do these qualities affect your life in Baring?

4) With the new bridge serving vehicle traffic, would you prefer that the new bridge also serve pedestrian and bike traffic?

*Continue survey on next page*

**Thoughts on Baring Bridge Replacement:**

*Please write in the space below each question.*

1) In what ways, if any, were you impacted by the Baring Bridge emergency repairs in 2017?

a. What worked well for you, or didn't work well, related to the 2017 emergency repairs?

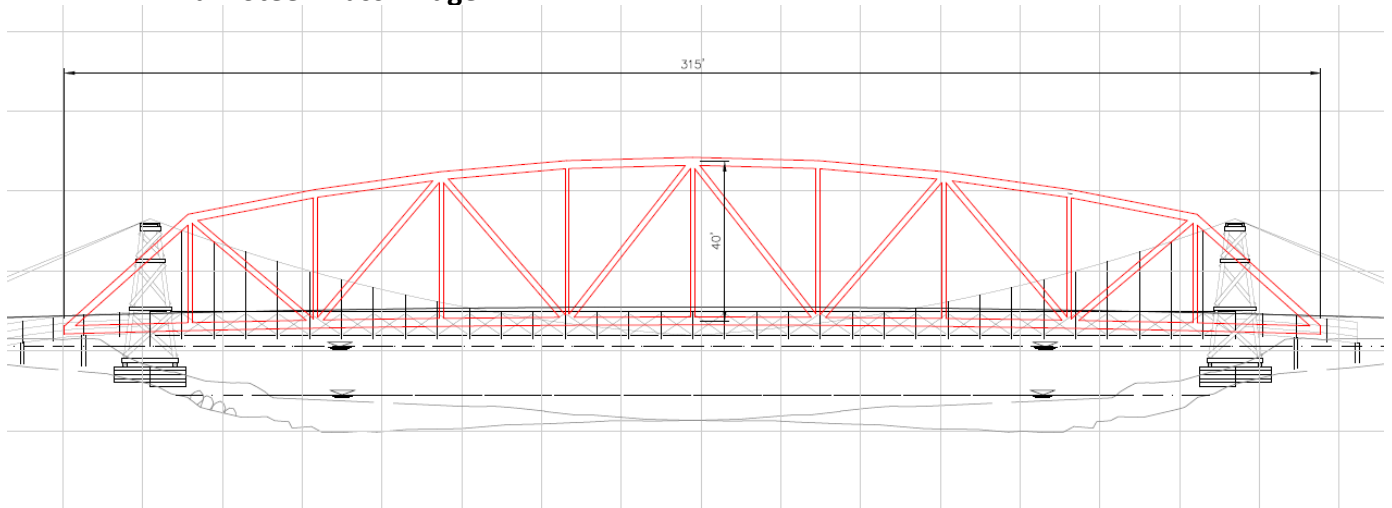
*Continue survey on next page*

2.) What is your preference for the location of a new bridge – the current location or downriver from the existing bridge?

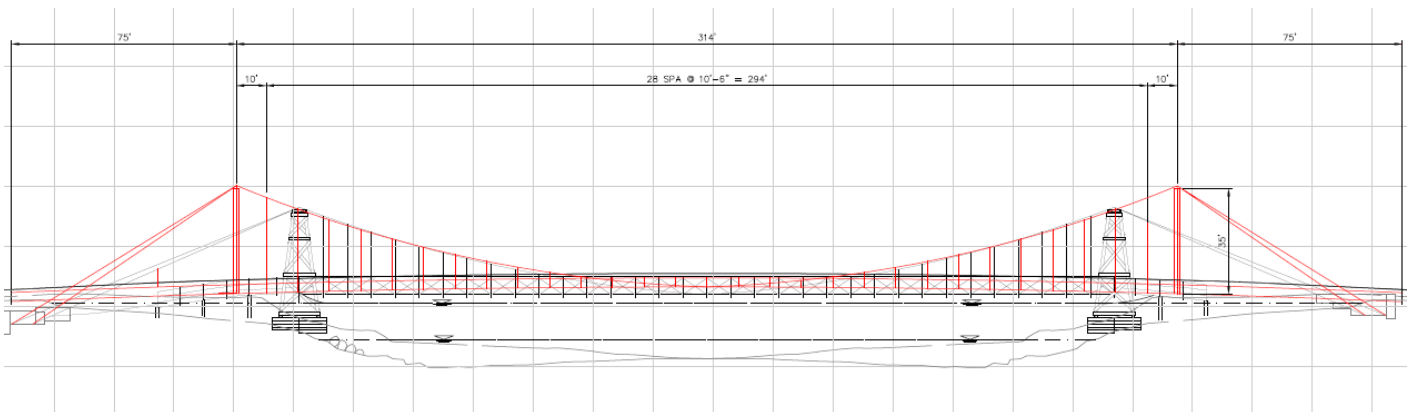
3) Many criteria will be used to consider a preferred alternative; one of them is the bridge appearance. We want to hear from you which one of the four bridge types is your preferred appearance.

*Please circle your preference from the following four options (a, b, c, or d):*

**a. Steel Truss Bridge**

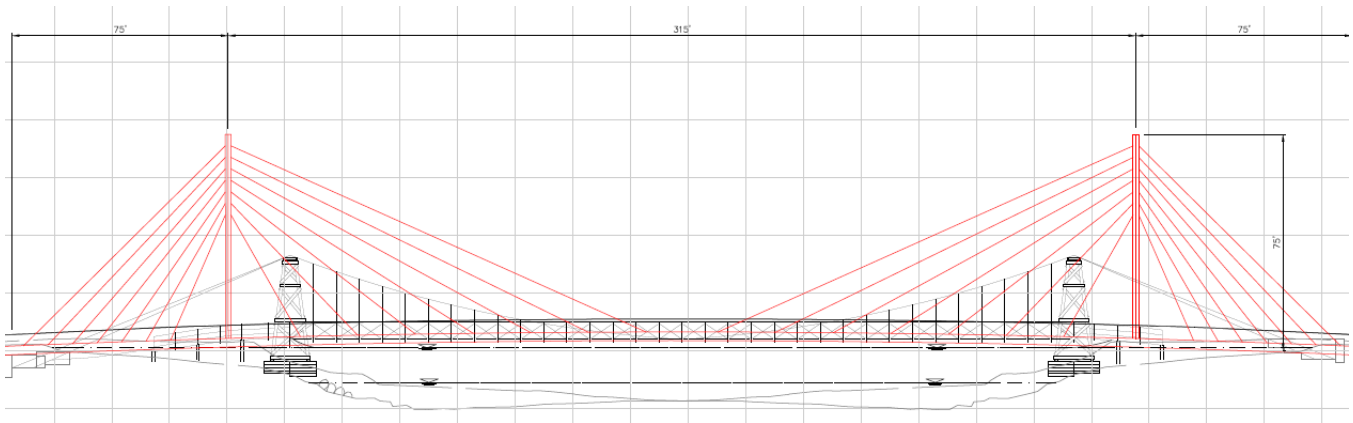


**b. Suspension Bridge**

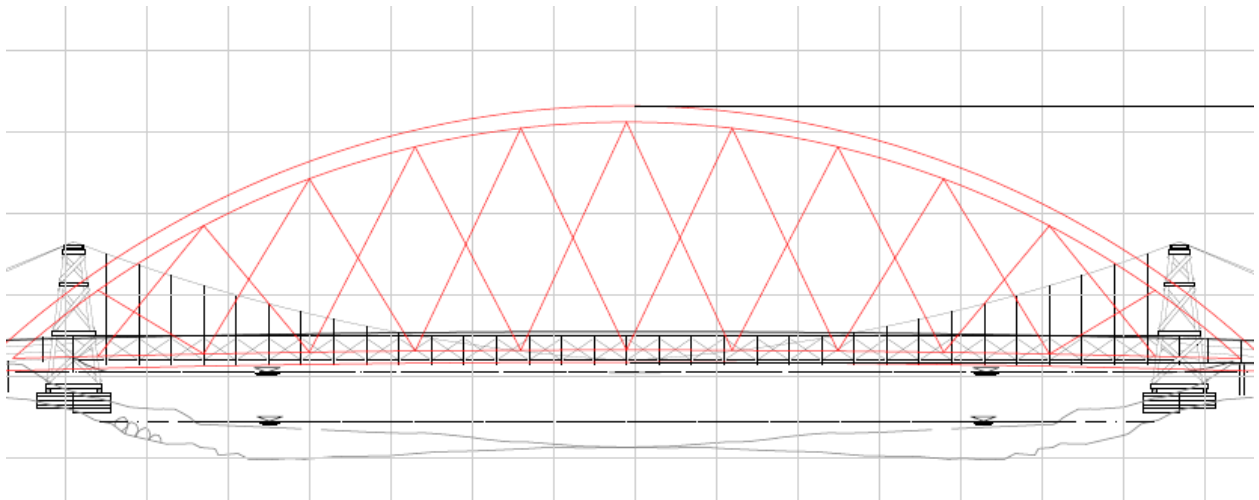


*Continue survey on next page*

**c. Twin Towered Cable Stay Bridge**



**d. Arch Bridge**



4) What else is important to you regarding the bridge project?

*Continue survey on next page*



**Closing Questions:**

*Please write in the space below each question.*

1) Is there anything else you would like us to know?

2) Are there any questions you have for King County?

Thank you for completing this survey!

**Please mail by 1/26/19** *(self-addressed postage-paid envelope included)*

For more information, please contact Brent Champaco and visit the project website:

[www.kingcounty.gov/BaringBridge](http://www.kingcounty.gov/BaringBridge)