

LEGEND AND ABBREVIATIONS

LINE TYPES

EXIST.	DESCRIPTION
	BUILDING LINE (EXIST.)
	CANAL [SCALEABLE] (EXIST.)
	CREEK/DITCH CENTERLINE (EXIST.)
	CURB/PAVEMENT/SIDEWALK (EXIST.)
	FENCE (EXIST.)
	GUARDRAIL (EXIST.)
	LAKE/POND
	MARSH/SWAMP PERIMETER
	WETLAND PERIMETER (DELINEATED BY BIOLOGIST)
	WETLAND BUFFER (DELINEATED BY BIOLOGIST)
	RETAINING WALL (EXIST.)
	RIVERBANK/ShORELINE
	SHOULDER (EXIST.)
	ROCK FACING (EXIST.)

SURVEY:	DESCRIPTION
	CENTERLINE (EXIST.)
	CONTOUR (DEPRESSION)
	CONTOUR (INTERVAL) (EXIST.)
	CONTOUR (INDEX) (EXIST.)
	EASEMENT (TEMPORARY)
	MATCH LINE
	MEANDER LINE
	PROPERTY LINE (EXIST.)
	RANGE/TOWNSHIP LINE
	RESERVATION/PARK/FOREST (EXIST.)
	RIGHT-OF-WAY (EXIST.)
	CITY-LIMITS
	SECTION LINE
	QUARTER SECTION LINE
	SIXTEENTH SECTION LINE
	STATE/COUNTY/CORPORATE LIMIT

UTILITIES (EXISTING):	DESCRIPTION
	CABLE TELEVISION (AERIAL)
	CABLE TELEVISION (BURIED)
	FIBER OPTIC
	FORCE MAIN
	GAS
	6" GAS LINE
	OIL
	POWER (AERIAL)
	POWER (BURIED)
	SANITARY SEWER
	STEAM
	STORM DRAINAGE
	TELEPHONE (AERIAL)
	TELEPHONE (BURIED)
	UTILITY SERVICE LINE (GENERAL)
	WATER
	STORM DRAIN

LINE TYPES (CONT.)

CONSTRUCT	DESCRIPTION
	BUILDING LINE 2/7
	CREEK/DITCH
	CREEK/DITCH CENTERLINE
	CURB (PROP)
	CURB/PAVEMENT/SIDEWALK
	SILT FENCE
	HIGH VISIBILITY FENCE
	STRAW WATTLE
	TURBIDITY CURTAIN
	FLAGS & STAKES
	GUARDRAIL
	LAKE/POND
	MARSH/SWAMP PERIMETER
	WETLAND PERIMETER
	WETLAND BUFFER
	RETAINING WALL (CONC. BLOCK)
	RETAINING WALL (MODULAR BLOCK)
	RETAINING WALL (MSE)
	ROCK FACING
	CENTERLINE
	CONTOUR (INTERVAL)
	CONTOUR (INDEX)
	EASEMENT (PERMANENT)
	PROPERTY LINE
	R/W (EX. DURING DESIGN REVIEW ONLY)
	RIGHT-OF-WAY
	RIGHT-OF-WAY (LIMITED ACCESS) COINCIDENTAL
	CUT LINE
	FILL LINE

DRAINAGE

SYMBOL	DESCRIPTION
	STORM DRAIN CATCH BASIN
	STORM DRAIN INLET (NO CATCH)
	STORM DRAIN CULVERT
	STORM DRAIN MANHOLE
	STORM PIPE (PROPOSED) DOUBLE LINE TO SIZE OF PIPE DIAMETER
	STRUCTURE DETAILS NO.
	CALL OUT DESIGNATION
	SHEET NO.

CONTRACTOR SHALL VERIFY LOCATION AND DEPTHS OF ALL EXISTING UTILITIES PRIOR TO CONSTRUCTION

GAS/POWER/TELEPHONE

SYMBOL	DESCRIPTION
	GAS METER
	GAS VALVE
	PAD MOUNTED TRANSFORMER
	POWER VAULT
	TRANSMISSION TOWER (SCALEABLE)
	UTILITY POLE
	TELEPHONE RISER
	POWER POLE
	TELEPHONE VAULT
	UTILITY POLE ANCHOR

SURVEY

SYMBOL	DESCRIPTION
	ANGLE POINT
	BENCH MARK
	BLOCK CORNER
	IRON PIPE
	MONUMENT (IN CASE)
	MONUMENT (SURFACE)
	OWNERSHIP TIE
	SECTION CENTER
	SECTION CORNER
	QUARTER CORNER
	SIXTEENTH CORNER
	CLOSING CORNER
	MEANDER CORNER
	WITNESS CORNER
	SOIL BORING
	SPOT ELEVATION
	TAX LOT / PARCEL NUMBER
	INTERSTATE
	ASSESSOR'S CODE

WATER

SYMBOL	DESCRIPTION
	GUARD POST
	FH
	WATER VALVE

ROAD PLAN

SYMBOL	DESCRIPTION
	CUT SLOPE CATCH POINTS (OPTIONAL) (SCALEABLE)
	FILL SLOPE CATCH POINTS (OPTIONAL) (SCALEABLE)
	SHOULDER

SYMBOLS

	CHECK DAM
	TEMPORARY STABILIZED CONSTRUCTION ENTRANCE
	CLEARING LIMIT
	COMPOST
	DUST CONTROL MEASURES
	TEMPORARY DITCH
	HAND CLEARING LIMIT
	FLAGS & STAKES
	GRADING LIMITS
	CATCH BASIN AND CULVERT/INLET PROTECTION
	MATTING (EROSION CONTROL BLANKET)
	PLASTIC COVERING
	PERMANENT SEEDING
	TEMPORARY SEDIMENT TRAP CONTRIBUTION AREA (APPROX. 1 ACRE)
	QUARRY SPILL PROTECTION
	SAND BAG
	SEEDING
	SILT FENCE
	"STRAW MULCH" FOR TEMPORARY COVER
	SURFACE ROUGHING
	TEMPORARY SEDIMENT TRAP
	STRAW BALE BARRIER
	TURBIDITY CURTAIN
	TEMPORARY SEEDING
	HIGH VISIBILITY FENCE
	VEGETATION PRESERVATION
	VEGETATED FILTER STRIP
	VEGETATED STREAM BANK STABILIZATION
	WATER QUALITY SAMPLING LOCATION
	MAPLE/ALDER/DECIDUOUS TREE
	FIR/EVERGREEN TREE
	TREE STUMP
	SNAG

ABBREVIATIONS

ABAND	ABANDONED	MIN	MINIMUM
AC	ASPHALT CONCRETE	MISC	MISCELLANEOUS
ACP	ASPHALT CONCRETE PAVEMENT	MON	MONUMENT
ADJ	ADJUST	MUTCD	MANUAL ON UNIFORM TRAFFIC CONTROL DEVICES
AH	AHEAD	N	NORTH
AP	ANGLE POINT	NO	NUMBER
APPROX.	APPROXIMATELY	NST	NOT STEEPER THAN
ARD	AGREEMENT TO RECONSTRUCT DWY	NTS	NOT TO SCALE
AVE	AVENUE	O-XING	OVERHEAD CROSSING
AVG	AVERAGE	O.C.	ON CENTER
BK	BACK	OD	OUTSIDE DIAMETER
B	BASELINE	OP	OVERHEAD POWER
BLDG	BUILDING	OT	OVERHEAD TELEPHONE
BLVD	BOULEVARD	P	POLE, POWER
BM	BENCH MARK	PAR	PARK ACCESS ROAD
BMP	BEST MANAGEMENT PRACTICE	PAV'T	PAVEMENT
BRG	BEARING	PC	POINT OF CURVATURE
BTWN	BETWEEN	PCC	POINT OF COMPOUND CURVE
BVCE	BEGINNING OF VERT CURVE ELEV	P-E	PRE-EMPT
BVCS	BEGINNING OF VERT CURVE STATION	PED	PEDESTRIAN
C	CONDUCTOR	PI	POINT OF INTERSECTION
CATV	CABLE TV	R	PROPERTY LINE
CB	CATCH BASIN	PP	POWER POLE
CL	CLASS	PR	PAIR
CL	CENTERLINE	PRC	POINT OF REVERSE CURVE
CLR	CLEAR	PSI	POUND PER SQ IN
CMP	CORRUGATED METAL PIPE	PT	POINT OF TANGENT
COMPT	COMPACTED	PVC	POLYVINYL CHLORIDE
CONC	CONCRETE	PVCC	POINT OF VERT COMPOUND CURVE
CONN	CONNECT	PVI	POINT OF VERT INTERSECTION
CONST	CONSTRUCTION	PVRC	POINT OF VERT REVERSE CURVE
CSTC	CRUSHED SURFACING TOP COURSE	QTY	QUANTITY
CU	CUBIC	R	RADIUS
CM	CUBIC METER	RD	ROAD
D	DRAIN PIPE	REINF	REINFORCED
DEG OR	DEGREE	REQ'D	REQUIRED
DIAM	DIAMETER	ROW	RIGHT-OF-WAY
DIST	DISTANCE	RT	RIGHT
DWG	DRAWING	R/W	RIGHT-OF-WAY
DWY	DRIVEWAY	S	SOUTH/SLOPE
E	EAST, ELECTRICAL	SA	SANITARY
EA	EACH	SCHED	SCHEDULE
EASE	EASEMENT	SD	STORM DRAIN
EL	ELEVATION	SECT	SECTION
ELEC	ELECTRICAL	SERV	SERVICE
EMB	EMBANKMENT	SEW	STRUCTURAL EARTH WALL
EP	EDGE OF PAVEMENT	SF	SQUARE FEET/FOOT
EQ	EQUATION	SHLD	SHOULDER
EST	ESTIMATE	SHT	SHEET
EVCE	END OF VERT CURVE ELEV	SP	1 SHIELDED PAIR IN SHINGLE CABLE
EVCS	END OF VERT CURVE STATION	SPEC	SPECIAL
EXCL	EXCLUDE	SPECS	SPECIFICATIONS
EXIST	EXISTING	SQ	SQUARE
FH	FIRE HYDRANT	SR	STATE ROUTE
FW	FACE OF WALL	SS	SANITARY SEWER
FT OR	FEET/FOOT	ST	STREET
G	GAS LINE, GREEN	STA	STATION
GALV	GALVANIZED	S/W	SIDEWALK
GB	GRADE BREAK	T	TELEPHONE, TANGENT, TON
GE	GRATE ELEV	TAN	TANGENT
GR	GUARDRAIL	TBM	TEMPORARY BENCHMARK
GRD	GROUND	TCE	TEMPORARY CONSTRUCTION EASE
GV	GAS VALVE	TEMP	TEMPORARY
HORIZ	HORIZONTAL	TOW	TOP OF WALL
HPS	HIGH PRESSURE SODIUM	TP	TELEPHONE POLE
HT	HEIGHT	TYP	TYPICAL
HUND	HUNDRED	UD	UNDERDRAIN PIPE
HWY	HIGHWAY	UG	UNDERGROUND
ID	INSIDE DIAMETER	VAR	VARIABLE
IE	INVERT ELEV	VC	VERT CURVE
INV	INVERT	VERT	VERTICAL
JB	JUNCTION BOX	W	WEST, WATER
JTS, JT	JOINTS, JOINT	W/	WITH
JUD	JOINT USE DRIVEWAY	WM	WATER METER
L	LENGTH OF ARC	WM	WATERMAIN
LF	LINEAL FOOT/FEET	W/O	WITHOUT
LT	LEFT	WV	WATER VALVE
LUMIN	LUMINAIRE	Y	YELLOW
M	METER	Y	YELLOW (FLASH)
MAX	MAXIMUM	YDS	YARDS
MH	MANHOLE	&	AND



Know what's below.
Call before you dig.

SURVEY JOB NO:	19074	12/2019
CHECKED:	J. EVANS	01/2020
CAD ENTERED:	C. KLINGELE	--
DESIGNED:	C. KLINGELE	--
CHECKED:	J. WANG	--
SUPERVISOR:	A. MCMANUS	--

NUM.	REVISION	BY	DATE

60% DESIGN
PROGRESS COPY
04/2022

FED. AID No.	--
PROJECT No.	1138330
MAINTENANCE DIVISION No.	--

KING COUNTY DEPT. OF LOCAL SERVICES
JOHN TAYLOR, DIRECTOR
164TH PL SE AND SE COVINGTON-SAWYER RD
SIGHTLINE IMPROVEMENTS

LEGEND & ABBREVIATIONS

	SHEET	2
	OF	13
	SHEETS	
320-56 (2)		

SEC. 36, T.22 N., R.5 E., W.M. SW 1/4 SEC. 36, T. 22 N., R. 5 E., W.M.

NE⁴ SW⁴

PARCEL NO.	PROPERTY OWNERS	**TOTAL AREA SQ. FT.	DEEDED R/W SQ.FT.	REMAINDER SQ. FT.	TCE SQ. FT.
362205-9009	JOHNSON, TIMOTHY E & BARBARA L	64,400	7,323	57,077	3,623
362205-9181	BUTT, ROGER D	69,403	690	68,713	1,428
TOTAL			8,014		5,051

** TOTAL AREA SQ. FT. - DATA FROM KC PARCEL RECORD

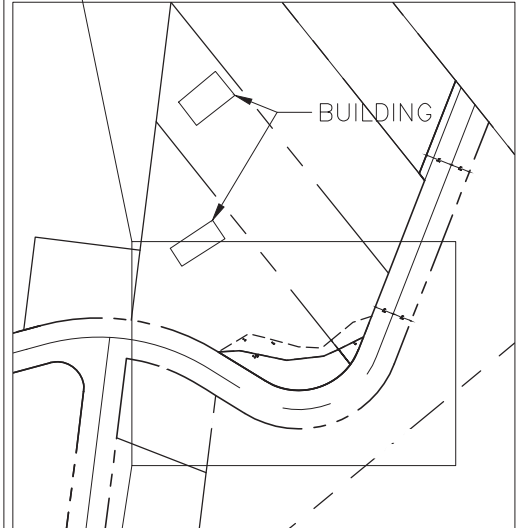
CURVE DATA	
Δ	= 46° 50' 43"
R	= 324.00
T	= 140.36
L	= 264.91

PARCEL # 3622059009
JOHNSON, TIMOTHY E & BARBARA L

PARCEL # 3622059181
BUTT, ROGER D

KCID#5920
N:130575.56
E:1325957.89

SCALE IN FEET
NAD 83/91



LEGEND	
	EX. RIGHT-OF-WAY LINE
	EX. PROPERTY LINE
	TEMPORARY CONSTRUCTION EASEMENT
	DEED ACQUISITION
	PROPOSED RIGHT-OF-WAY LINE
	RIGHT-OF-WAY CENTER LINE

KCID#5923
N:128020.309
E:1320695.34

CURVE DATA	
Δ	= 100° 25' 54"
R	= 129.94
T	= 156.05
L	= 227.77

PARCEL # 3622059097
JOHNSON, JACK D

PARCEL # 3622059190
RIDLON, DON & ROSE

SURVEY JOB NO:	19074	12/2019
CHECKED:	J. EVANS	01/2020
CAD ENTERED:	C. KLINGELE	---
DESIGNED:	C. KLINGELE	---
CHECKED:	J. WANG	---
SUPERVISOR:	A. MCMANUS	---

NUM.	REVISION	BY	DATE

FED. AID No.	---
PROJECT No.	1138330
MAINTENANCE DIVISION No.	---

KING COUNTY DEPT. OF LOCAL SERVICES
JOHN TAYLOR, DIRECTOR
**164TH PL SE AND SE COVINGTON-SAWYER RD
SIGHTLINE IMPROVEMENTS**

SHEET
5
OF
13
SHEETS

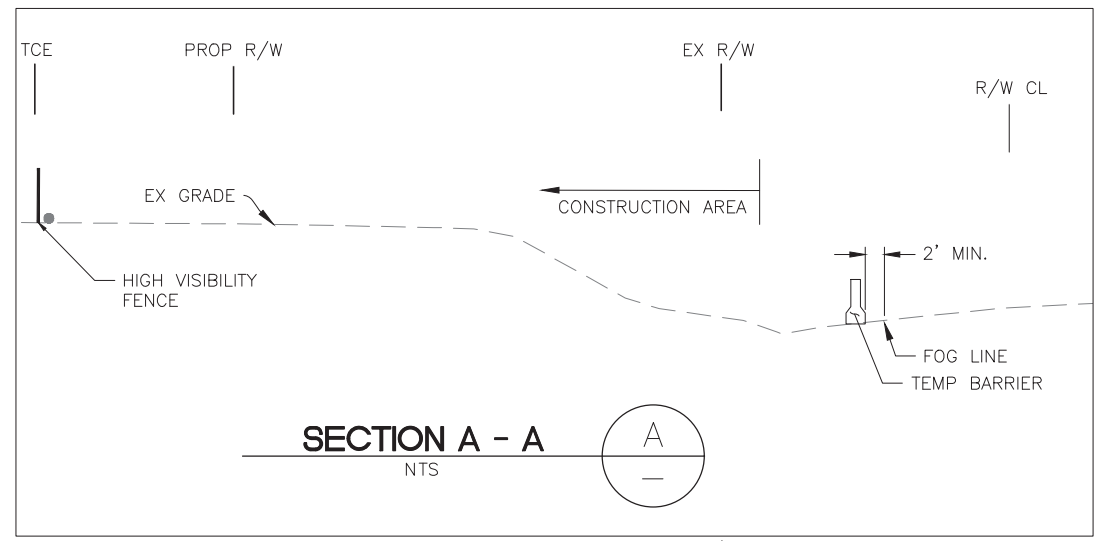
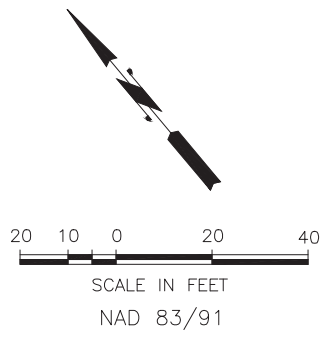
320-56 (5)

RIGHT-OF-WAY PLAN

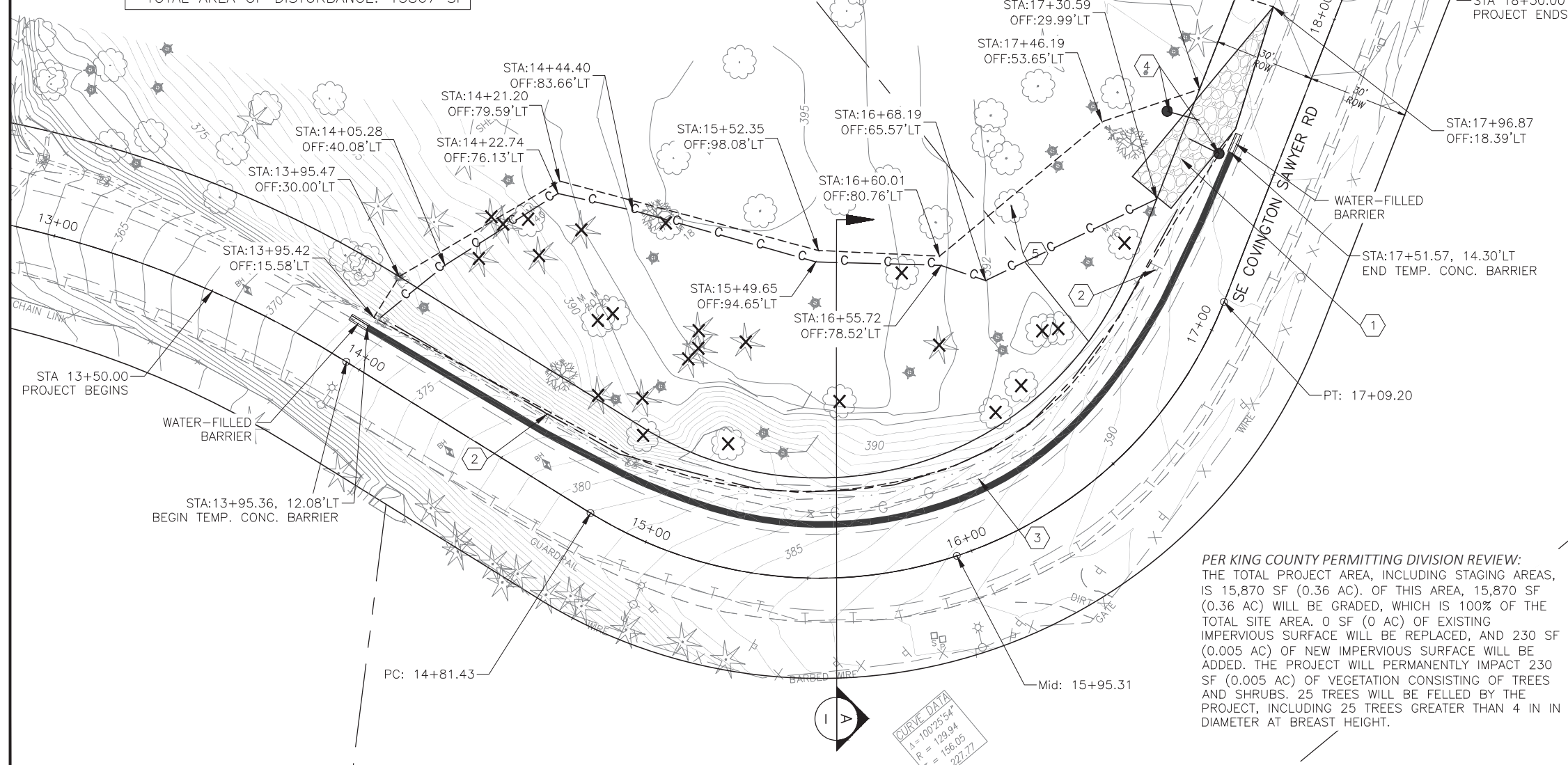
I:\roads\EN\PR\1138330 - covington sawyer at 164th sightline\development-design\work\CAD\design\civil\civil\design\cad\ROW Plans\1138330\ROW.dwg. SHT 5 RW. 4/22/2022 3:26:57 PM, cklinglele, ANSIFull bleed B (11.00 x 17.00 inches), 1:2

SW 1/4 SEC. 36, T. 22 N., R. 5 E., W.M.

EASTING=1323114.09



* TOTAL AREA OF DISTURBANCE: 15867 SF



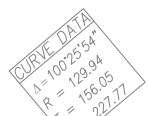
EX TREE REMOVAL SUMMARY		
NAME	DIAMETER (IN)	QUANTITY
DOUGLAS FIR	36	4
	26	1
	24	2
	16	4
MAPLE	40	1
	20	2
	18	3
	16	1
	12	1
	6	1
COTTONWOOD	16	2
	6	2
HEMLOCK	36	1
TOTAL		25

LEGEND	
	EXCAVATION LIMITS
	STABILIZED CONSTRUCTION ACCESS
	CLEARING AND GRUBBING LIMITS
	TEMP. DOUBLE 20' CHAIN LINK GATE
	REMOVE EXISTING TREES
	TEMP. CONC. BARRIER
	WATER-FILLED BARRIER

- CONSTRUCTION NOTES**
- TEMPORARY 15' MIN WIDE CONSTRUCTION ACCESS - GEOTEXTILE UNDER 12" THICK 4" TO 8" QUARRY SPALLS PAD
 - REMOVE EX SIGN DURING CONSTRUCTION, RESTORE THE SIGN AFTER CONSTRUCTION
 - CONTRACTOR TO LOCATE THE EX GAS LINE AND PROTECT DURING CONSTRUCTION
 - TEMPORARY DOUBLE 20' CHAIN LINK GATE
 - PROTECT EXISTING TREE DURING CONSTRUCTION

- GENERAL NOTES:**
- CONTRACTOR TO INSTALL NECESSARY TESC METHODS PER ON SITE KC ENGINEER'S DIRECTIONS.
 - CONTRACTOR TO INSTALL TEMPORARY STORM WATER BYPASS TO DOWNSTREAM INLETS AS NEEDED PER KC ENGINEER DIRECTIONS.
 - CONTRACTOR TO DESIGN THE TEMPORARY CONSTRUCTION TRAFFIC CONTROL PLAN PER MUTCD AND TO BE APPROVED BY KC ENGINEERS.
 - WATER-FILLED BARRIER SHOULD MEET MASH TESTING REQUIREMENTS FOR A TEST LEVEL 2 CONDITION.
 - CONTRACTOR TO PROTECT AND RESTORE THE DITCH IF IMPACTED DURING CONSTRUCTION.

PER KING COUNTY PERMITTING DIVISION REVIEW:
 THE TOTAL PROJECT AREA, INCLUDING STAGING AREAS, IS 15,870 SF (0.36 AC). OF THIS AREA, 15,870 SF (0.36 AC) WILL BE GRADED, WHICH IS 100% OF THE TOTAL SITE AREA. 0 SF (0 AC) OF EXISTING IMPERVIOUS SURFACE WILL BE REPLACED, AND 230 SF (0.005 AC) OF NEW IMPERVIOUS SURFACE WILL BE ADDED. THE PROJECT WILL PERMANENTLY IMPACT 230 SF (0.005 AC) OF VEGETATION CONSISTING OF TREES AND SHRUBS. 25 TREES WILL BE FELLED BY THE PROJECT, INCLUDING 25 TREES GREATER THAN 4 IN DIAMETER AT BREST HEIGHT.



SURVEY JOB NO:	19074	12/2019
CHECKED:	J. EVANS	01/2020
CAD ENTERED:	C. KLINGELE	---
DESIGNED:	C. KLINGELE	---
CHECKED:	J. WANG	---
SUPERVISOR:	A. MCMANUS	---
NUM.	REVISION	BY DATE

**60% DESIGN
 PROGRESS COPY
 04/2022**

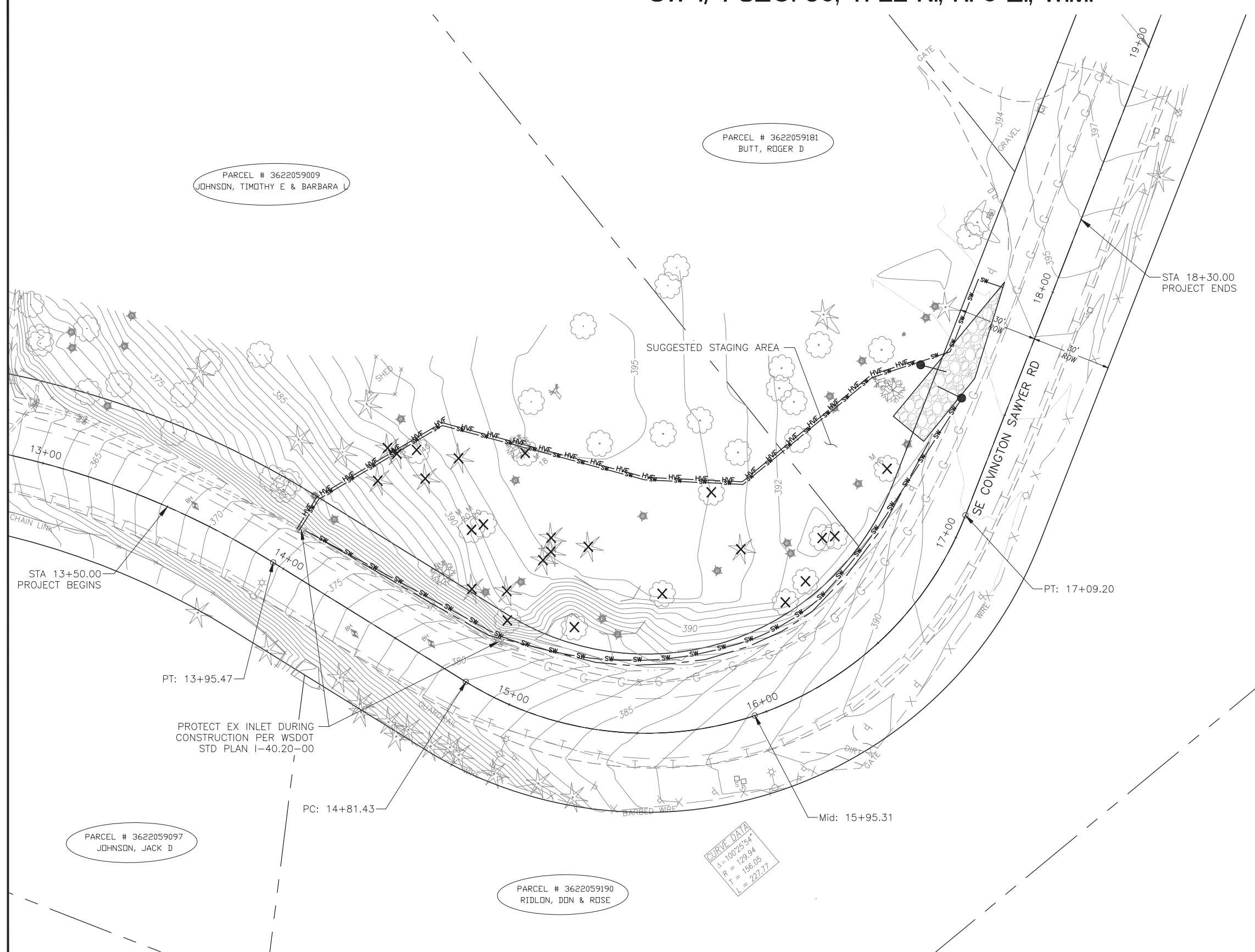
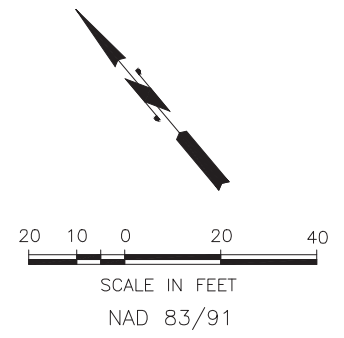
FED. AID No.	---
PROJECT No.	1138330
MAINTENANCE DIVISION No.	---

KING COUNTY DEPT. OF LOCAL SERVICES
 JOHN TAYLOR, DIRECTOR
**164TH PL SE AND SE COVINGTON-SAWYER RD
 SIGHTLINE IMPROVEMENTS**
 SITE PREPARATION PLAN

SHEET **6** OF **13** SHEETS
320-56 (6)

I:\roads\EN\Proj\1138330 - covington sawyer at 164th sight line\development-design\work\CAD\design cad\civil\design cad\1138330_SITE_PREP_PLAN - 6.dwg_SHT 6 SITE PREP 4/22/2022 3:27:53 PM edlingele, ANS full bleed B (11.00 x 17.00 inches), 1:2

SW 1/4 SEC. 36, T. 22 N., R. 5 E., W.M.



LEGEND

- HIGH-VISIBILITY-FENCE (268 LF)
- STABILIZED CONSTRUCTION ACCESS
- STRAW WATTLE (625 LF)
- TEMP. DOUBLE 20' CHAIN LINK GATE

- GENERAL NOTES:**
- CONTRACTOR TO INSTALL NECESSARY TESC METHODS PER ON SITE KC ENGINEER'S DIRECTIONS.
 - CONTRACTOR TO PROTECT EXISTING INLET AND EXISTING DITCH DURING CONSTRUCTION.

CURVE DATA
 $\Delta = 100.2554$
 $R = 129.94$
 $L = 156.05$
 $L = 227.77$

SURVEY JOB NO:	19074	12/2019
CHECKED:	J. EVANS	01/2020
CAD ENTERED:	C. KLINGELE	---
DESIGNED:	C. KLINGELE	---
CHECKED:	J. WANG	---
SUPERVISOR:	A. MCMANUS	---

NUM.	REVISION	BY	DATE

**60% DESIGN
 PROGRESS COPY
 04/2022**

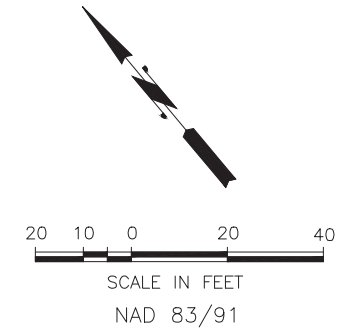
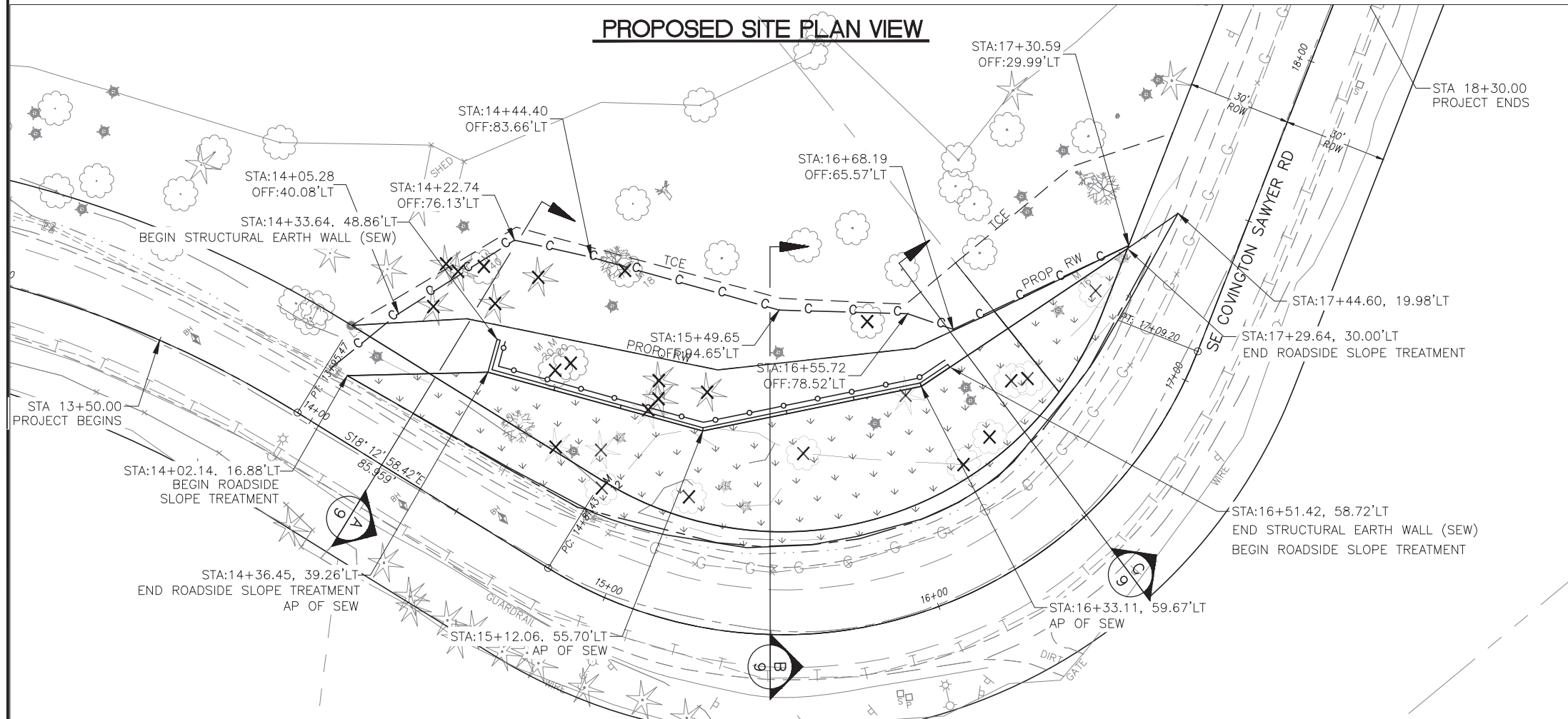
FED. AID No. _____
 PROJECT No. 1138330
 MAINTENANCE DIVISION No. _____

KING COUNTY DEPT. OF LOCAL SERVICES
 JOHN TAYLOR, DIRECTOR
**164TH PL SE AND SE COVINGTON-SAWYER RD
 SIGHTLINE IMPROVEMENTS**
 TESC PLAN

SHEET **7** OF **13** SHEETS
320-56 (7)

SW 1/4 SEC. 36, T. 22 N., R. 5 E., W.M.

PROPOSED SITE PLAN VIEW



LEGEND

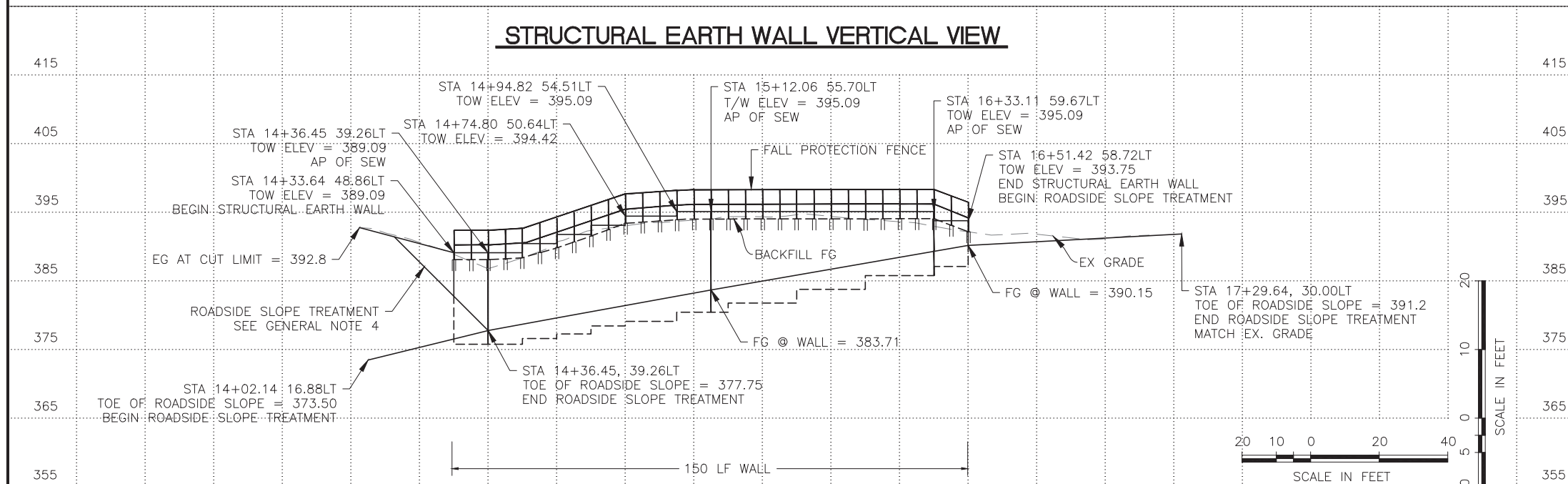
- EXCAVATION/CUT LIMITS
- ROADSIDE CLEAR ZONE
- STRUCTURAL EARTH WALL
- FALL PROTECTION FENCE

CUT/FILL QUANTITIES SUMMARY

TOTAL CUT (CY)	2,965
TOTAL FILL (CY)	1,665
TOTAL (CY)	1,280 (CUT)

* NEW IMPERVIOUS AREA: 230 SF

STRUCTURAL EARTH WALL VERTICAL VIEW



GENERAL NOTES:

- CONTRACTOR TO LOCATE THE EXISTING GAS LINE BEFORE CONSTRUCTION AND SHOULD NOT IMPACT THE GAS LINE.
- CONTRACTOR TO INSTALL TESC METHOD AS NECESSARY.
- IF GROUNDWATER IS ENCOUNTERED, THE CONTRACTOR SHALL WORK WITH THE ENGINEER TO INSTALL DEWATERING METHODS AS NEEDED.
- WALL EXCAVATION BACKFILL SLOPE AT STA 14+50 (NO STEEPER THAN 4:1) TRANSITION TO 2:1 AT STA 14+36 (ROADSIDE SLOPE TREATMENT ENDS).
- FALL PROTECTION FENCE DETAIL PER SHEET 10.



Know what's below.
Call before you dig.

SURVEY JOB NO:	19074	12/2019
CHECKED:	J. EVANS	01/2020
CAD ENTERED:	C. KLINGELE	--
DESIGNED:	C. KLINGELE	--
CHECKED:	J. WANG	--
SUPERVISOR:	A. MCMANUS	--

NUM.	REVISION	BY	DATE

**60% DESIGN
PROGRESS COPY
04/2022**

FED. AID No.	--
PROJECT No.	1138330
MAINTENANCE DIVISION No.	--

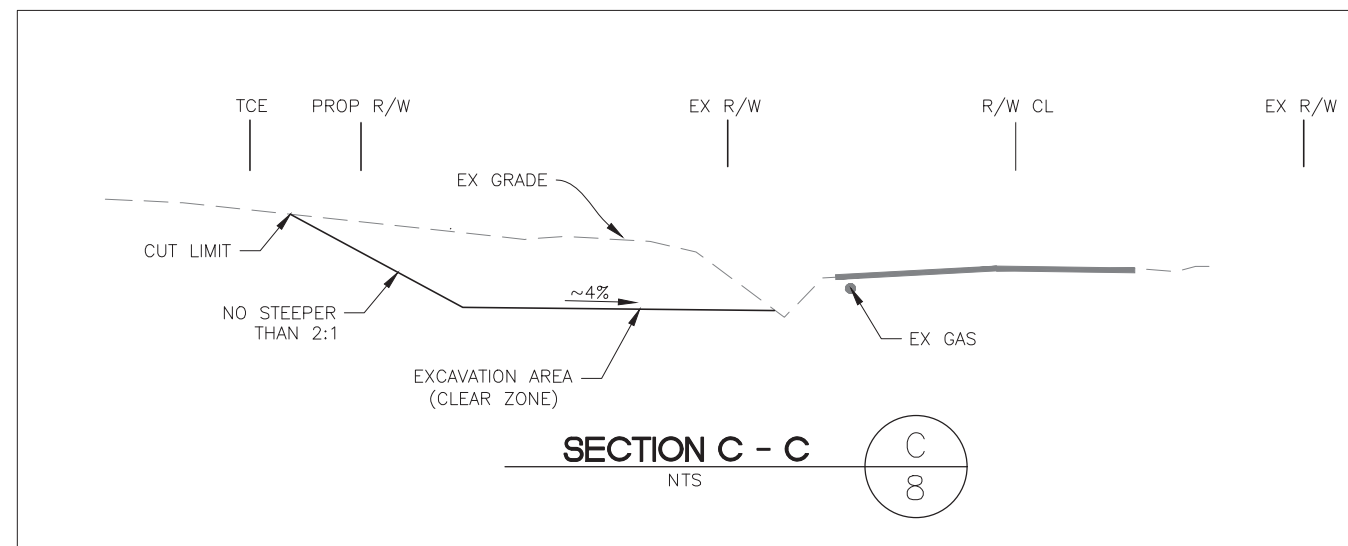
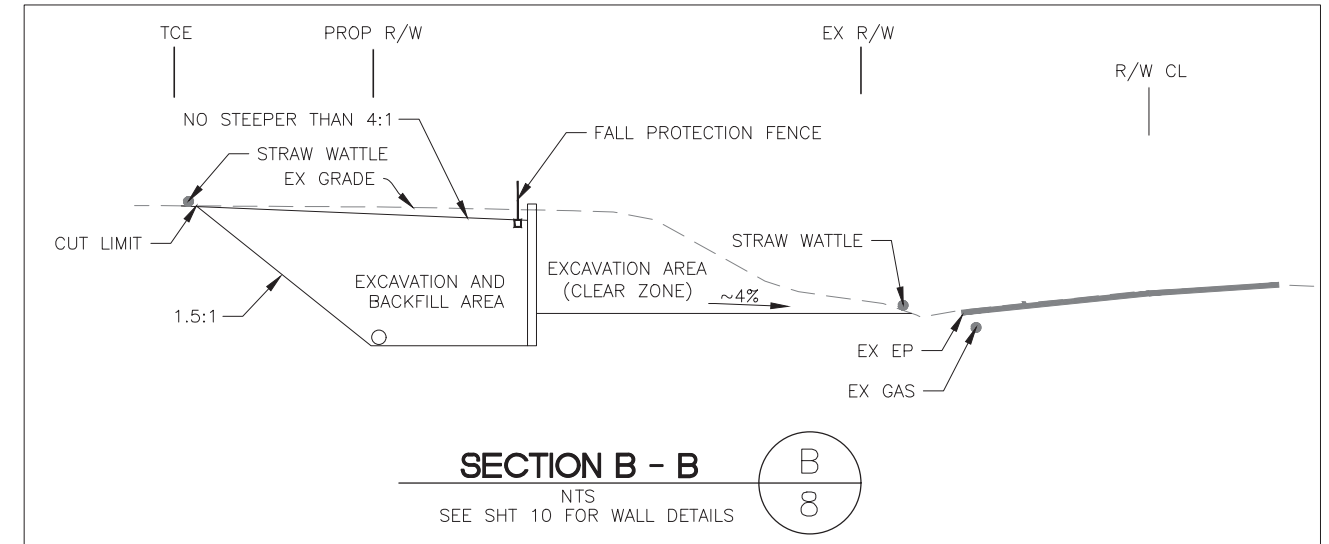
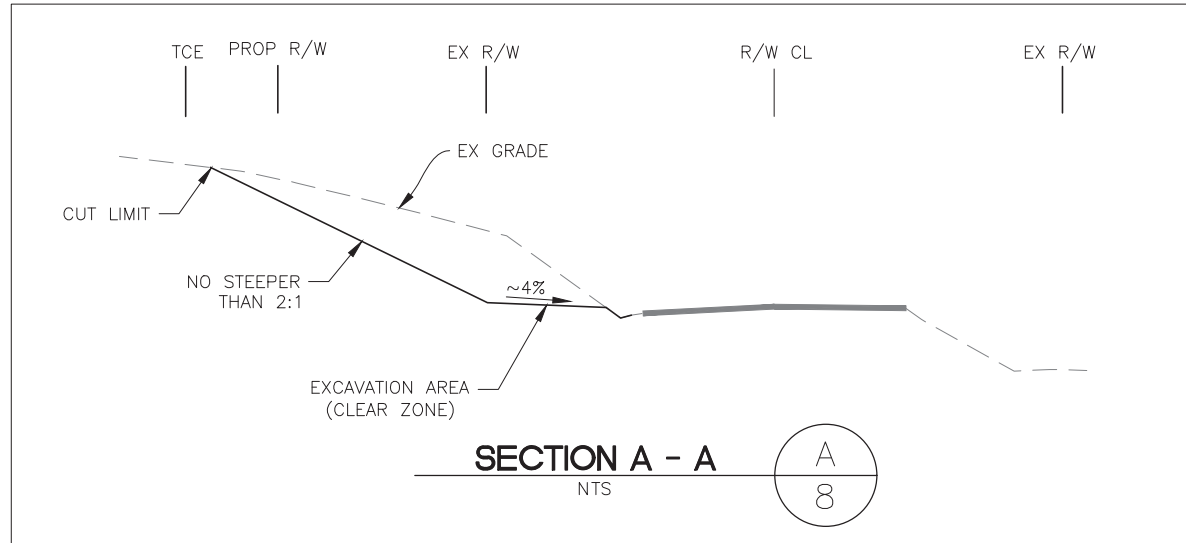
KING COUNTY DEPT. OF LOCAL SERVICES
JOHN TAYLOR, DIRECTOR
**164TH PL SE AND SE COVINGTON-SAWYER RD
SIGHTLINE IMPROVEMENTS**

SITE PLAN AND PROFILE

SHEET
8
OF
13
SHEETS

320-56 (8)

SW 1/4 SEC. 36, T. 22 N., R. 5 E., W.M.



Know what's below.
Call before you dig.

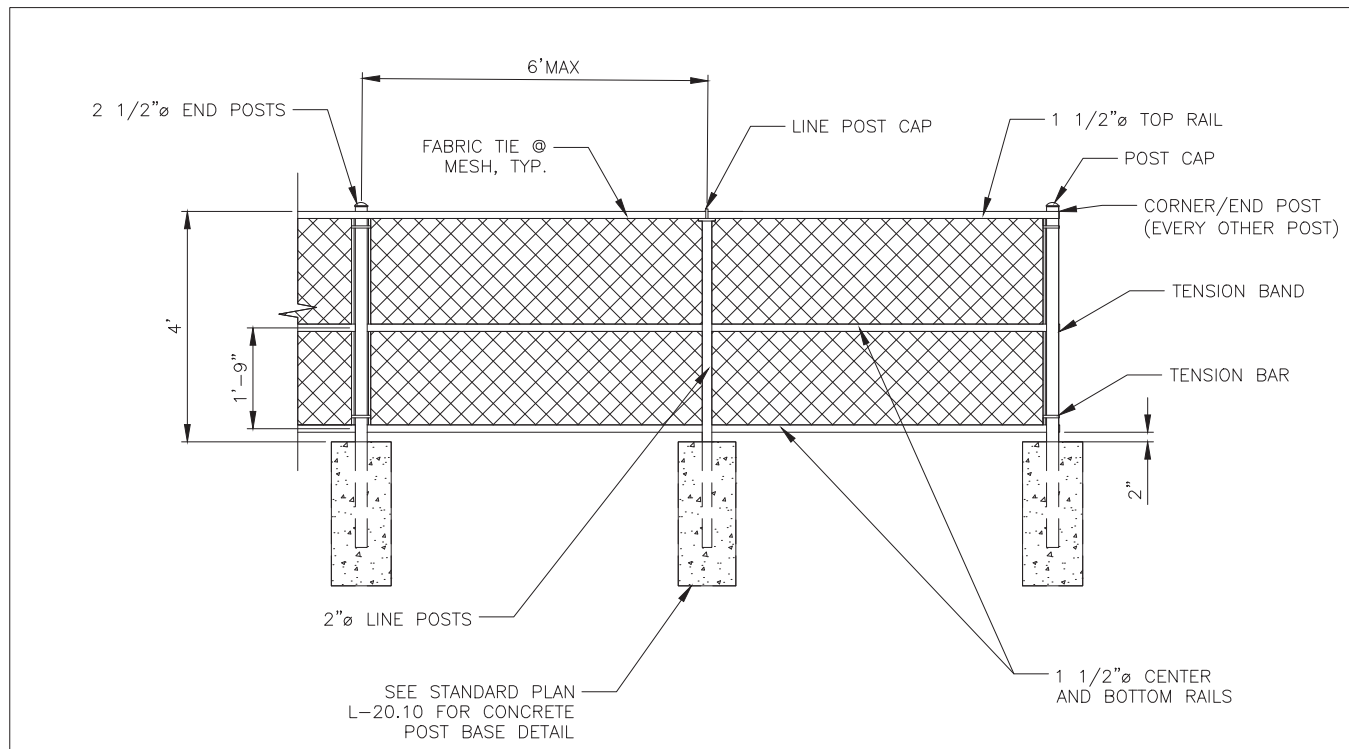
SURVEY JOB NO:	19074	12/2019			
CHECKED:	J. EVANS	01/2020			
CAD ENTERED:	C. KLINGELE	--			
DESIGNED:	C. KLINGELE	--			
CHECKED:	J. WANG	--			
SUPERVISOR:	A. MCMANUS	--			
NUM.	REVISION	BY	DATE		

**60% DESIGN
PROGRESS COPY
04/2022**

FED. AID No. ---
PROJECT No. 1138330
MAINTENANCE DIVISION No. ---

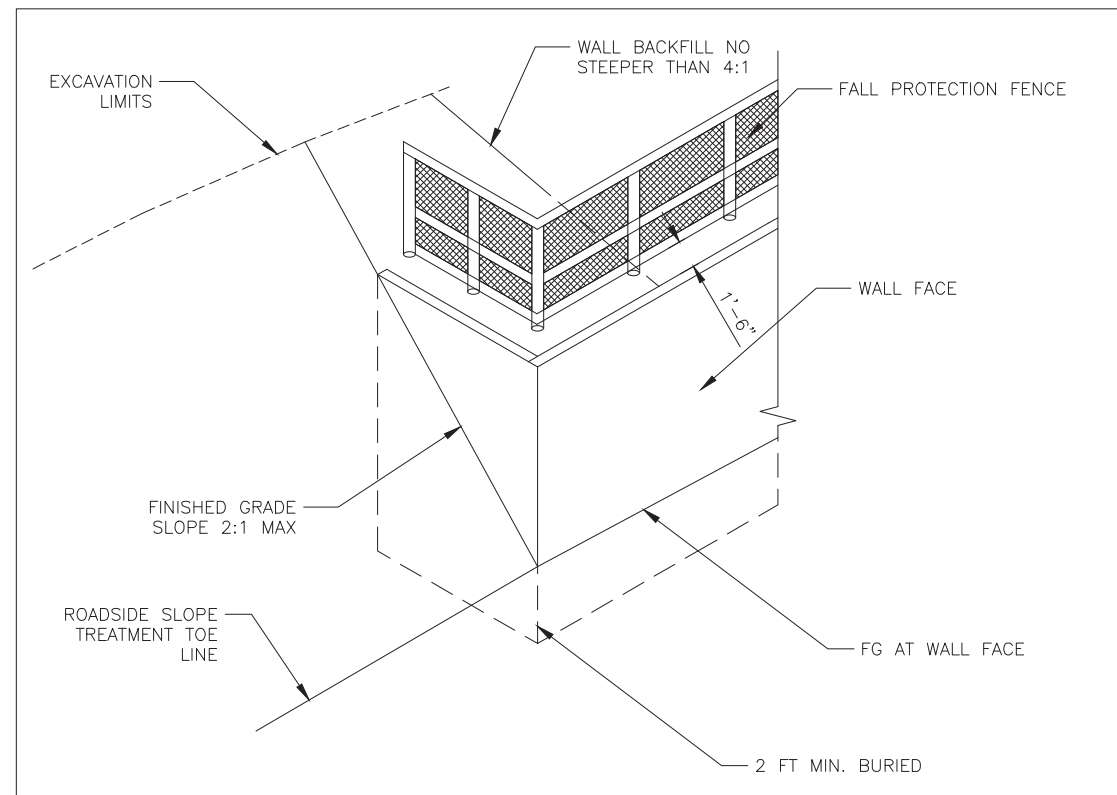
KING COUNTY DEPT. OF LOCAL SERVICES
JOHN TAYLOR, DIRECTOR
**164TH PL SE AND SE COVINGTON-SAWYER RD
SIGHTLINE IMPROVEMENTS**
SITE PLAN DETAILS - 1 OF 2

 SHEET **9** OF **13** SHEETS
320-56(9)



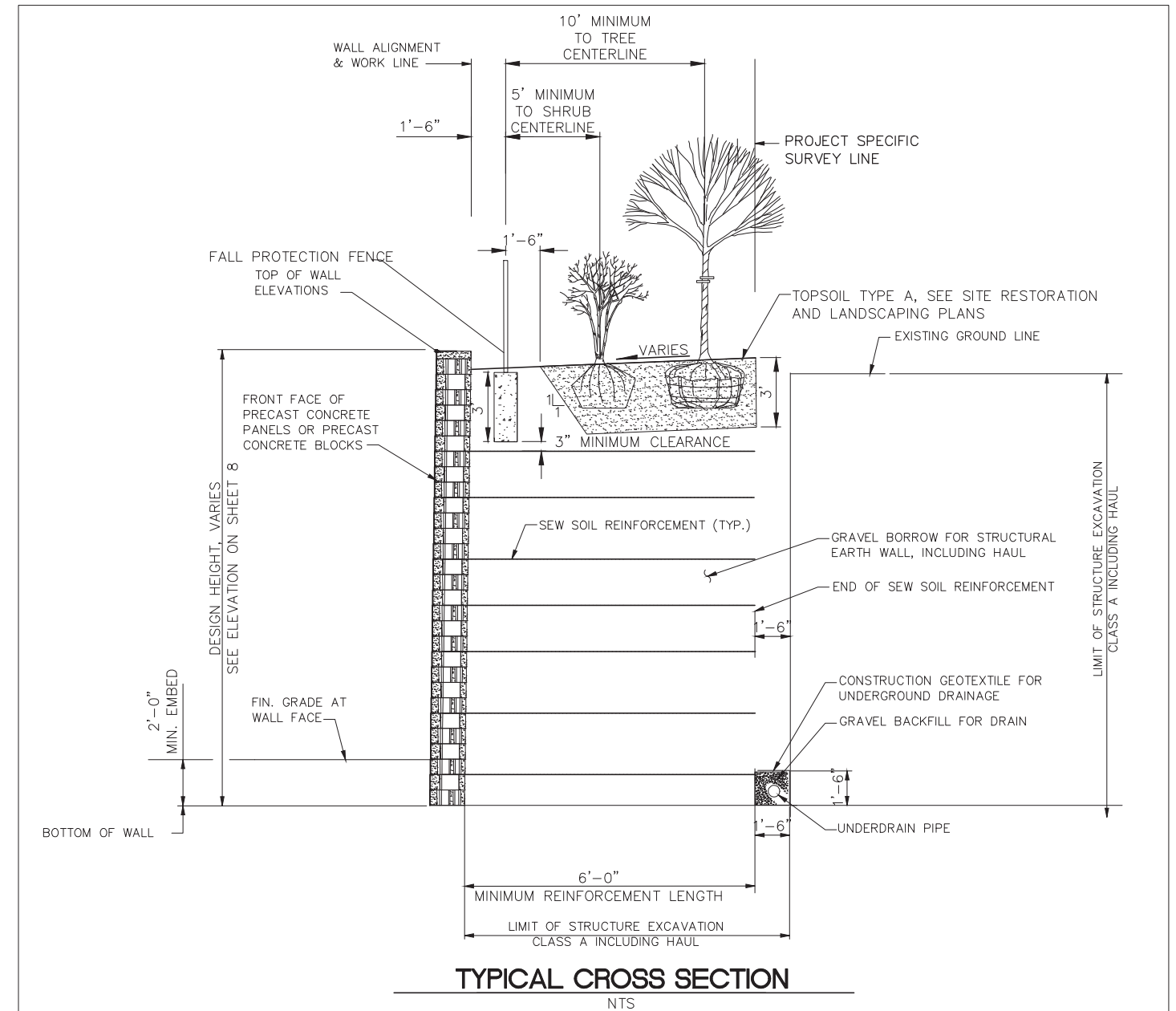
FALL PROTECTION FENCE DETAIL

NTS



WEST END WALL ISOMETRIC VIEW

NTS



TYPICAL CROSS SECTION

NTS



Know what's below.
Call before you dig.

SURVEY JOB NO:	19074	12/2019
CHECKED:	J. EVANS	01/2020
CAD ENTERED:	C. KLINGELE	--
DESIGNED:	C. KLINGELE	--
CHECKED:	J. WANG	--
SUPERVISOR:	A. MCMANUS	--

NUM.	REVISION	BY	DATE

**60% DESIGN
PROGRESS COPY
04/2022**

FED. AID No.	--
PROJECT No.	1138330
MAINTENANCE DIVISION No.	--

KING COUNTY DEPT. OF LOCAL SERVICES
JOHN TAYLOR, DIRECTOR
**164TH PL SE AND SE COVINGTON-SAWYER RD
SIGHTLINE IMPROVEMENTS**

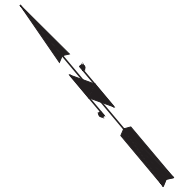
SITE PLAN DETAILS - 2 OF 2

King County
SHEET
10
OF
13
SHEETS

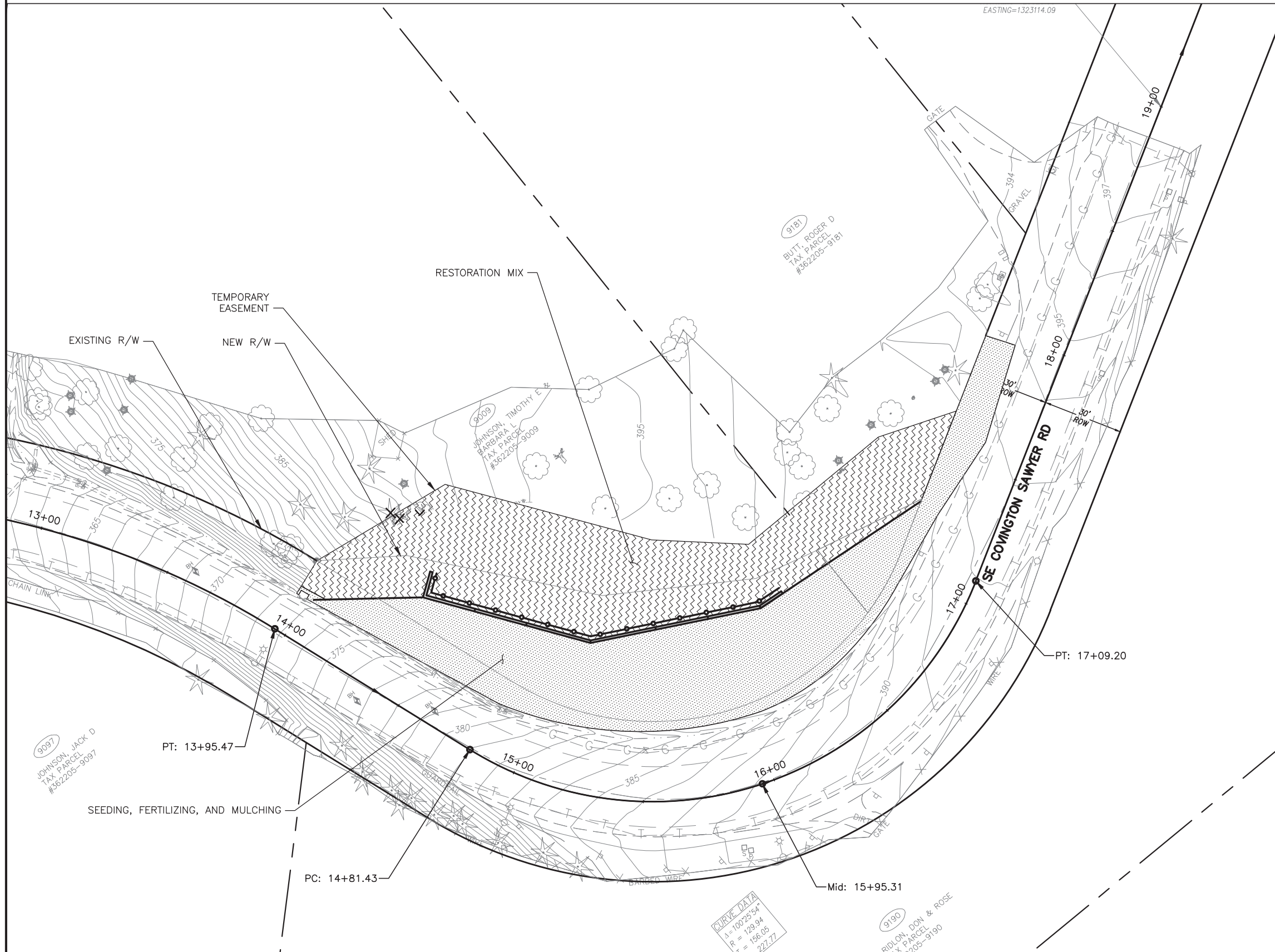
320-56 (10)

SW 1/4 SEC. 36, T. 22 N., R. 5 E., W.M.

EASTING=1323114.09



20 10 0 20 40
SCALE IN FEET
NAD 83/91



SYMBOL	ITEM	QTY
RESTORATION MIX		
	BIGLEAF MAPLE (12' O.C.)	10
	DOUGLAS FIR (12' O.C.)	30
	VINE MAPLE (4' O.C.)	72
	WESTERN BEAKED HAZELNUT (4' O.C.)	72
	LOW OREGON GRAPE (2' O.C.)	250
	SWORD FERN (4' O.C.)	101
	THIMBLEBERRY (4' O.C.)	89
	BLUE ELDERBERRY (4' O.C.)	30
	SNOWBERRY (4' O.C.)	119
	3" BARK OR WOOD CHIP MULCH (CY)	77
	24" TOPSOIL TYPE A (CY)	612
	12" COMPOST SOCKS (LF)	160

	SEEDING, FERTILIZING, AND MULCHING (SY)	873
	SOIL AMENDMENT (SY)	873

LEGEND

- STRUCTURAL EARTH WALL
- FALL-PROTECTION FENCE
- SEE SHEET 2 FOR ADDITIONAL LEGEND SYMBOLS

GENERAL NOTES:

1. SEE SHEET 12 FOR DETAILS
2. SEE SHEET 13 FOR PLANT MATERIAL LIST, PLANT MATERIAL SETBACK CHART, AND GENERAL PLANTING NOTES.
3. RANDOMLY MIX SPECIES WITHIN PLANTING AREAS. PLANT SHRUBS IN GROUPS OF 3-5 BY SPECIES.
4. SPACE ALL CONTAINER PLANTS AT 4' O.C. SPACING WITH THE EXCEPTION OF TREES SPACED AT 12' O.C. AND GROUNDCOVER SPACED AT 2' O.C.
5. SEE SHEETS 9 THROUGH ## FOR SLOPE EXCAVATION AND WALL DETAILS.



Know what's below.
Call before you dig.

SURVEY JOB NO:	19074	12/2019			
CHECKED:	J. EVANS	01/2020			
CAD ENTERED:	J. KLEINKOPF	01/2022			
DESIGNED:	J. KLEINKOPF	01/2022			
CHECKED:	J. WANG	--			
SUPERVISOR:	A. MCMANUS	--			
NUM.	REVISION	BY	DATE		

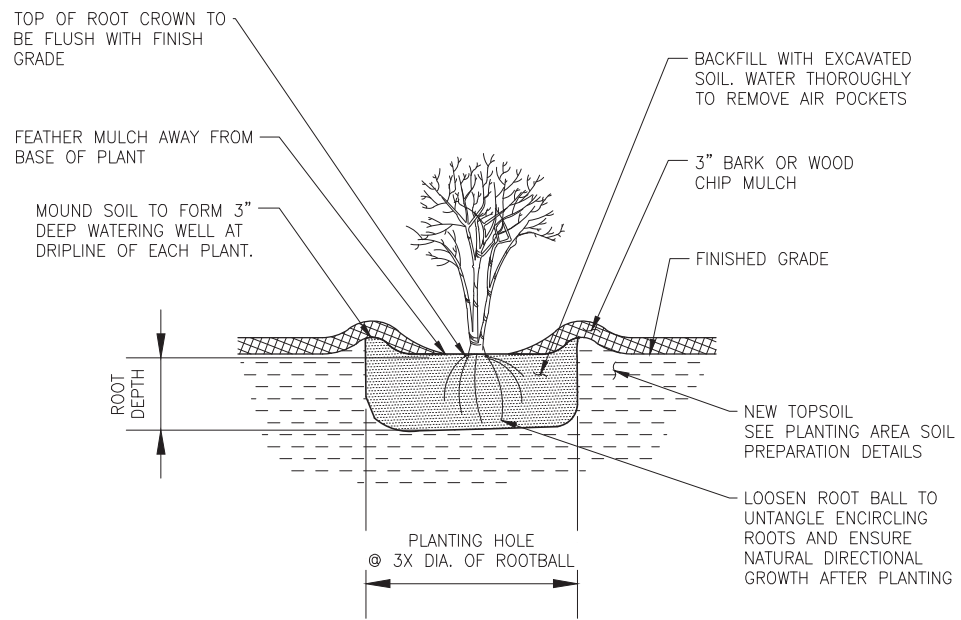
60% DESIGN
PROGRESS COPY
04/2022

FED. AID No.	--
PROJECT No.	1138330
MAINTENANCE DIVISION No.	--

KING COUNTY DEPT. OF LOCAL SERVICES
JOHN TAYLOR, DIRECTOR
**164TH PL SE AND SE COVINGTON-SAWYER RD
SIGHTLINE IMPROVEMENTS**
SITE RESTORATION AND LANDSCAPING PLAN

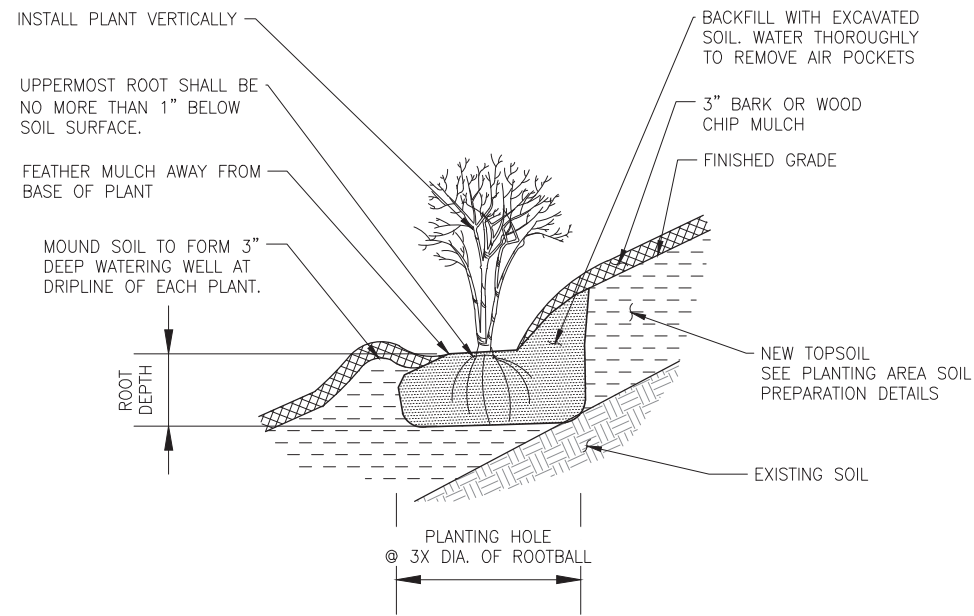
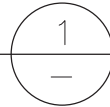
SHEET
11
OF
13
SHEETS
320-56 (11)

SW 1/4 SEC. 36, T. 22 N., R. 5 E., W.M.



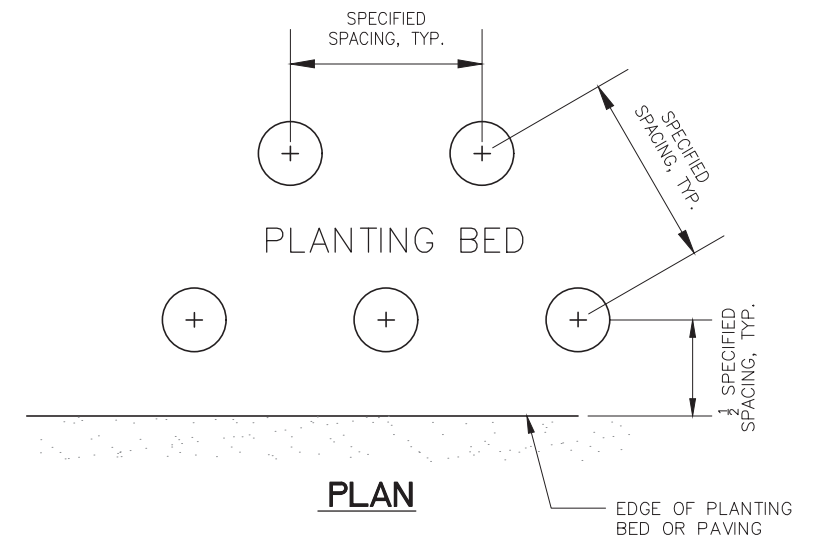
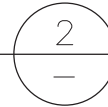
CONTAINERIZED PLANTING

NTS



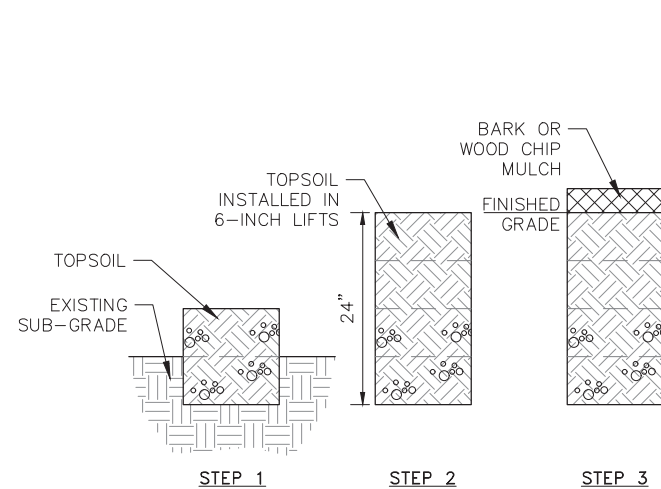
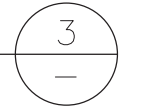
PLANTING ON SLOPE

NTS



SHRUB AND GROUNDCOVER SPACING

NTS



PLANTING AREA SOIL PREPARATION

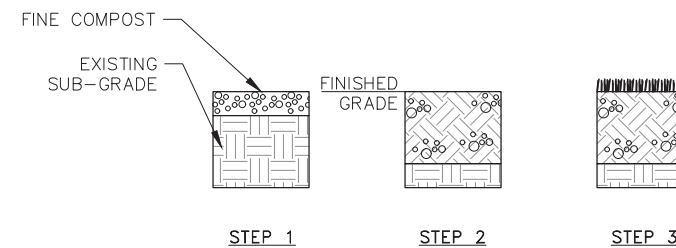
NTS



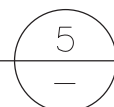
- STEP 1**
INCORPORATE 6 INCHES OF TOPSOIL INTO EXISTING DECOMPACTED SUB-GRADE TO A DEPTH OF 10 INCHES.
- STEP 2**
PLACE SUCCESSIVE 6-INCH LIFTS OF TOPSOIL, COMPACTING EACH LIFT IN ACCORDANCE WITH SECTION 8-02.3(4)A.
- STEP 3**
PLACE 3 INCHES OF BARK OR WOOD CHIP MULCH.
- NOTES:
1. ALL AREAS OF COMPACTED SUBGRADE INCLUDING STAGING AREAS SHALL BE DECOMPACTED BY RIPPING SOIL TO A DEPTH OF 18" PRIOR TO SOIL INSTALLATION.
2. FOR STRUCTURAL EARTH WALL BACKFILL AREA, OMIT STEP 1.
3. TOPSOIL AND COMPOST SOCK INSTALLATION MUST BE APPROVED BEFORE BARK OR WOOD CHIP MULCH IS PLACED.

SEEDING AREA SOIL PREPARATION

NTS



- STEP 1**
PLACE 3 INCHES OF FINE COMPOST AS SOIL AMENDMENT.
- STEP 2**
INCORPORATE FINE COMPOST INTO EXISTING SUB-GRADE TO A DEPTH OF 10 INCHES.
- STEP 3**
APPLY SEEDING, FERTILIZING, AND MULCHING.
- NOTES:
1. ALL AREAS OF COMPACTED SUBGRADE INCLUDING STAGING AREAS SHALL BE DECOMPACTED BY RIPPING SOIL TO A DEPTH OF 18" PRIOR TO SOIL AMENDMENT.



Know what's below.
Call before you dig.

SURVEY JOB NO:	19074	12/2019			
CHECKED:	J. EVANS	01/2020			
CAD ENTERED:	J. KLEINKOPF	01/2022			
DESIGNED:	J. KLEINKOPF	01/2022			
CHECKED:	J. WANG	--			
SUPERVISOR:	A. MCMANUS	--			
NUM.	REVISION	BY	DATE		

60% DESIGN
PROGRESS COPY
04/2022

FED. AID No.	--
PROJECT No.	1138330
MAINTENANCE DIVISION No.	--

KING COUNTY DEPT. OF LOCAL SERVICES
JOHN TAYLOR, DIRECTOR
**164TH PL SE AND SE COVINGTON-SAWYER RD
SIGHTLINE IMPROVEMENTS**
SITE RESTORATION AND LANDSCAPING DETAILS

	SHEET
	12
	OF
	13
	SHEETS
320-56 (12)	

SW 1/4 SEC. 36, T. 22 N., R. 5 E., W.M.

PLANT MATERIAL LIST					
COMMON NAME	BOTANICAL NAME	QUANTITY	SIZE	ROOT CONDITION	REMARKS
TREES					
PSIPE BIGLEAF MAPLE	ACER MACROPHYLLUM	10	18 IN. HT.	NO. 2 CONT.	SECTION 9-14.7(2), SINGLE LEADER
PSIPE DOUGLAS FIR	PSEUDOTSUGA MENZIESII	30	18 IN. HT.	NO. 2 CONT.	SECTION 9-14.7(2), SINGLE LEADER
SHRUBS AND GROUND COVER					
PSIPE VINE MAPLE***	ACER CIRCINATUM	72	12 IN. HT.	NO. 1 CONT.	SECTION 9-14.7(2), THREE STEM MIN.
PSIPE WESTERN BEAKED HAZELNUT***	CORYLUS CORNUTA	72	12 IN. HT.	NO. 1 CONT.	SECTION 9-14.7(2), THREE STEM MIN.
PSIPE LOW OREGON GRAPE*	MAHONIA NERVOSA	250	6 IN. HT.	NO. 1 CONT.	SECTION 9-14.7(2), THREE STEM MIN.
PSIPE SWORD FERN**	POLYSTICHUM MUNITUM	101	6 IN. HT.	NO. 1 CONT.	SECTION 9-14.7(2), THREE FROND MIN.
PSIPE THIMBLEBERRY**	RUBUS PARVIFLORUS	89	12 IN. HT.	NO. 1 CONT.	SECTION 9-14.7(2), THREE CANE MIN.
PSIPE BLUE ELDERBERRY***	SAMBUCUS CERULEA	30	12 IN. HT.	NO. 1 CONT.	SECTION 9-14.7(2), THREE STEM MIN.
PSIPE SNOWBERRY**	SYMPHORICARPOS ALBUS	119	12 IN. HT.	NO. 1 CONT.	SECTION 9-14.7(2), THREE STEM MIN.

*,**,*** SEE PLANT MATERIAL SETBACK CHART FOR EACH VEGETATION AND TREE TYPE.

PLANT MATERIAL NOTES:

- IF A CONFLICT OCCURS BETWEEN THE AMERICAN STANDARD FOR NURSERY STOCK (ASNS) ANSI Z60.1 AND THESE SPECIFICATIONS THEN THESE SPECIFICATIONS SHALL APPLY. SPECIFICATIONS FOR SIZE AND ROOT CONDITION ARE MINIMUMS BASED ON ASNS SIZING STANDARDS IN ACCORDANCE WITH SECTION 9-14.7(2).
- ALL PLANT MATERIAL SHALL BE NURSERY GROWN STOCK.

PLANT MATERIAL SETBACK CHART

THIS CHART SUPPLEMENTS SECTION 8.02.3(7) OF THE STANDARD SPECIFICATIONS. SETBACKS APPLY UNLESS OTHERWISE ADJUSTED BY THE ENGINEER DURING PLANT STAKING OR LAYOUT. DISTANCES BELOW ARE TO THE STEM OR TRUNK OF THE PLANT BEING INSTALLED.

	EDGE OF ROADWAY ¹	FACE OF WALL	BACK OF WALL	FENCE	SIGNS	EXISTING TREE TRUNK	EXISTING VEGETATION MASS	OVERHEAD POWER	DRAINAGE STRUCTURE
GROUND COVER *	5'	1.5'	1.5'	1.5'	1.5'	5'	5'	-	5'
SMALL SHRUB **	5'	3'	3'	3'	5'	5'	5'	-	5'
TALL SHRUB ***	15'	5'	5'	5'	6'	10'	10'	10'	10'
BIGLEAF MAPLE	40'	20'	20'	20'	40'	20'	10'	40'	40'
CONIFEROUS TREE	20'	15'	10'	10'	15'	15'	10'	20'	15'

¹ IF THERE IS A ROADSIDE DITCH, GROUND COVER AND SMALL SHRUB OFFSET IS 15' FROM EDGE OF ROADWAY.
*,**,*** SEE PLANT MATERIAL LIST FOR EACH VEGETATION AND TREE TYPE.

RESTORATION NOTES:

- THE CLEARING AND GRUBBING AREA SHOWN ON SHEET 6 REFLECTS THE MAXIMUM DISTURBANCE AREA ANTICIPATED AND PERMITTED. ALL PROPOSED PLANTS SHALL BE PLANTED WITHIN THE DESIGNATED RESTORATION AREA.
- CONTRACTOR SHALL HAVE ALL MATERIAL INSPECTED AND TREE LAYOUTS APPROVED BY THE ENGINEER PRIOR TO PLANTING.
- PLANTINGS SHALL TAKE PLACE DURING THE PLANT DORMANCY PERIOD (NOVEMBER 1ST TO MARCH 1ST) OR AS DIRECTED BY THE ENGINEER.
- IN ACCORDANCE WITH SECTION 8-02.3(8)A, NO SUBSTITUTION OF PLANT MATERIAL, SPECIES OR VARIETY, WILL BE ALLOWED UNLESS EVIDENCE IS SUBMITTED IN WRITING WITHIN 30 CALENDAR DAYS OF EXECUTION OF CONTRACT TO THE ENGINEER THAT A SPECIFIED PLANT CANNOT BE OBTAINED AND HAS BEEN UNOBTAINABLE SINCE THE AWARD OF THE CONTRACT.



Know what's below.
Call before you dig.

SURVEY JOB NO:	19074	12/2019			
CHECKED:	J. EVANS	01/2020			
CAD ENTERED:	J. KLEINKOPF	01/2022			
DESIGNED:	J. KLEINKOPF	01/2022			
CHECKED:	J. WANG	--			
SUPERVISOR:	A. MCMANUS	--			
NUM.	REVISION	BY	DATE		

60% DESIGN
PROGRESS COPY
04/2022

FED. AID No.	---
PROJECT No.	1138330
MAINTENANCE DIVISION No.	---

KING COUNTY DEPT. OF LOCAL SERVICES
JOHN TAYLOR, DIRECTOR
**164TH PL SE AND SE COVINGTON-SAWYER RD
SIGHTLINE IMPROVEMENTS**
SITE RESTORATION AND LANDSCAPING NOTES

	SHEET
	13 OF 13 SHEETS
320-56 (13)	