

## **APPENDIX D**

### **(Question 5)**

- 1. 2024 Comprehensive Plan Update Website (1 page)**
- 2. 2024 Comprehensive Plan Update Public Survey (4 pages)**
- 3. 2024 Comprehensive Plan Update Virtual Townhall Presentation (excerpts) (51 pages)**
- 4. Community Needs List Website (3 pages)**
- 5. Guardrail Program Website (1 page)**
- 6. NE Woodinville Duvall Road at NE 172nd Street Culvert Replacement Project Website (1 page)**
- 7. Postcards and Flyers (24 pages)**

## King County Comprehensive Plan

Learn more about what the Comprehensive Plan Council can get done on the 2024 update

- [THE 2024 UPDATE](#) | [PROJECT MILESTONES](#) | [PUBLIC FEEDBACK](#) | [FAQS](#)

### About the plan

- The second major update to the plan is being prepared by the King County Council. The King County Regional Council is the agency that will review and approve the plan. It is currently in the process of updating the plan by 2025.
- The Comprehensive Plan is a policy document that guides how growth and development will occur over the next 20 years. It guides King County's actions and actions by other agencies, such as:
  - new rules, building codes and standards for the look and feel of neighborhoods;
  - investment in transit, water, and parks;
  - provisions of utilities and services; and
  - actions to clear areas that are old and badly deteriorated.

- Revisions**
- [Council Action Plan](#)
- [Council Plan](#)
- [Comprehensive Planning News](#)
- [Planning Change Including Budget, Growth-Oriented Policies, and the Specific Item Changes](#)
- [Plan History and Analysis](#)
- [2020 Performance Measure Report](#)
- [King County Code Including Title 20 Planning and Title 25 Planning](#)
- [2020 Performance Measures](#)
- [PROVISION 2020](#)
- [King County Comprehensive Planning Process](#)

### The 2024 update

King County has made a decision to update the Comprehensive Plan, which guides what people live, work, and play in our communities. The plan will be updated to reflect the needs of our communities, and the plan will be updated to reflect the needs of our communities, and the plan will be updated to reflect the needs of our communities.

[LEGISLATIVE HISTORY](#) | [EXECUTIVE RECOMMENDED 2024 PLAN](#) | [PUBLIC REVIEW DRAFT OF THE 2024 PLAN](#)

### Executive Recommended 2024 King County Comprehensive Plan

King County Executive recommended the 2024 King County Comprehensive Plan to the Council on December 15, 2023. The plan includes updates to the plan's vision, mission, and goals, and the plan includes updates to the plan's vision, mission, and goals.

#### Executive Recommended 2024 King County Comprehensive Plan

- [Revised Comprehensive Plan Council recommendations](#) | 2/24/24
- [2024 King County Comprehensive Plan Recommendations](#) | 2/24/24
- [Appendix A: Council Action Plan and Policy Recommendations](#) | 2/24/24
- [Appendix B: Housing Needs Assessment \(March 2023\)](#) | 2/24/24
- [Appendix C: Transportation Assessment \(2023\)](#) | 2/24/24
- [Appendix D: Transportation Needs Assessment \(2023\)](#) | 2/24/24
- [Appendix E: Council Support and the Public Consultation Process](#) | 2/24/24
- [Notes from the Council, Council Staff, and the Public Consultation Process](#) | 2/24/24
- [Public Consultation Report \(2023\)](#) | 2/24/24
- [Supporting Information for the Executive Recommended 2024 King County Comprehensive Plan](#) | 2/24/24

#### Supporting documents

- [Executive Order](#) | 2/24/24
- [Staff Report](#) | 2/24/24
- [Public Notice of Council Action](#) | 2/24/24
- [Summary of Comprehensive Plan Recommendations \(2024 Update\)](#) | 2/24/24
- [Summary of Comprehensive Plan Recommendations \(2024 Update\)](#) | 2/24/24
- [Public Notice of Council Action](#) | 2/24/24
- [Public Notice of Council Action](#) | 2/24/24
- [Items Being Heard and Studied](#)
- [Basic Document Changes](#) | 2/24/24
- [Council Action Plan and Policy Recommendations](#) | 2/24/24
- [Council Action Plan and Policy Recommendations](#) | 2/24/24
- [Council Action Plan and Policy Recommendations](#) | 2/24/24

#### Items

- [Public Notice of Council Action](#) | 2/24/24
- [Public Notice of Council Action](#) | 2/24/24
- [Public Notice of Council Action](#) | 2/24/24
- [Public Notice of Council Action](#) | 2/24/24
- [Public Notice of Council Action](#) | 2/24/24

### Draft Environmental Impact Statement Review

The King County Council is reviewing the Draft Environmental Impact Statement (EIS) for the 2024 update to the Comprehensive Plan. The EIS is a document that describes the impacts of the plan and the measures that will be taken to avoid, minimize, and compensate for those impacts.

#### Comments / Suggestions?

Please let us know if you have any comments, questions or requests. If you have any comments, questions or requests, please contact the staff at the address below. For requests about the current Comprehensive Plan, visit our email at [complan@kingcountycwa.gov](mailto:complan@kingcountycwa.gov). For requests about the current Comprehensive Plan, visit our email at [complan@kingcountycwa.gov](mailto:complan@kingcountycwa.gov).

### Project milestones

- Jan 18, 2024** King County Executive will sign the Comprehensive Plan update process.
- Jan 25, 2024 to Feb 28, 2024** King County Executive will sign the Comprehensive Plan update process.
- Mar 15, 2024 to Mar 28, 2024** King County Executive will sign the Comprehensive Plan update process.
- Apr 15, 2024** King County Council will review and approve the Comprehensive Plan update process.

### Public feedback on the 2024 plan

- King County is incorporating the results of public feedback into the 2024 update to the Comprehensive Plan. The results of public feedback are being used to inform the plan's vision, mission, and goals, and the plan includes updates to the plan's vision, mission, and goals.
- [Recording of February 16, 2024 Council Meeting - Executive Order](#)
- [Recording of February 16, 2024 Council Meeting - Executive Order](#)
- [Recording of February 16, 2024 Council Meeting - Executive Order](#)

### FAQs

Why does King County have a Comprehensive Plan? The Comprehensive Plan is a policy document that guides how growth and development will occur over the next 20 years. It guides King County's actions and actions by other agencies, such as: new rules, building codes and standards for the look and feel of neighborhoods; investment in transit, water, and parks; provisions of utilities and services; and actions to clear areas that are old and badly deteriorated.

What is an urbanized area? Urbanized areas are areas with a population density of at least 5,000 people per square mile. Urbanized areas are areas that are densely populated and have a high concentration of buildings and other structures.

#### What does the comprehensive plan say about the future of the community?

The Comprehensive Plan is a policy document that guides how growth and development will occur over the next 20 years. It guides King County's actions and actions by other agencies, such as: new rules, building codes and standards for the look and feel of neighborhoods; investment in transit, water, and parks; provisions of utilities and services; and actions to clear areas that are old and badly deteriorated.

#### How does the plan affect me?

The Comprehensive Plan is a policy document that guides how growth and development will occur over the next 20 years. It guides King County's actions and actions by other agencies, such as: new rules, building codes and standards for the look and feel of neighborhoods; investment in transit, water, and parks; provisions of utilities and services; and actions to clear areas that are old and badly deteriorated.

#### How do I submit changes, make recommendations or help in other ways?

- [Public Notice of Council Action](#) | 2/24/24
- [Public Notice of Council Action](#) | 2/24/24
- [Public Notice of Council Action](#) | 2/24/24
- [Public Notice of Council Action](#) | 2/24/24
- [Public Notice of Council Action](#) | 2/24/24



# YOUR FUTURE YOUR VOICE

2024 COMPREHENSIVE PLAN UPDATE



Appendix D.2 - 2024 Comprehensive Plan Update Public Survey

**KING COUNTY** is in the process of developing the 2024 Comprehensive Plan, a guide for how the County plans to support growing unincorporated communities (places outside the city limits) in upcoming years.



King County

Translate

We're so happy you're here.

## HOW WOULD YOU LIKE TO CONNECT?

Pick a language below. It will take you to a

### PUBLIC REVIEW DRAFT SUMMARIES

Life is busy! We get it. These short summaries share the highlights. They contain information on where to find the full details.

[English Public Review Draft Summary](#)

[Spanish Public Review Draft Summary](#)

[Cambodian Public Review Draft Summary](#)



# LIKE TO CONNECT?

Pick a language below. It will take you to a page where you can read a short summary and provide feedback to us.

— — — — — 

**ENGLISH**

**ESPAÑOL**      **РУССКИЙ**


**中文**      **AF SOOMAALI**


**한국어**      **TIẾNG VIỆT**

**ꠘꠞꠞ**      **GAGANA SAMOA**

- [English Public Review Draft Summary](#)
- [Spanish Public Review Draft Summary](#)
- [Cambodian Public Review Draft Summary](#)
- [Chinese Public Review Draft Summary](#)
- [Korean Public Review Draft Summary](#)
- [Russian Public Review Draft Summary](#)
- [Samoan Public Review Draft Summary](#)
- [Somali Public Review Draft Summary](#)
- [Vietnamese Public Review Draft Summary](#)

### Frequently Asked Questions

Where can I find the full Comprehensive Plan document? 

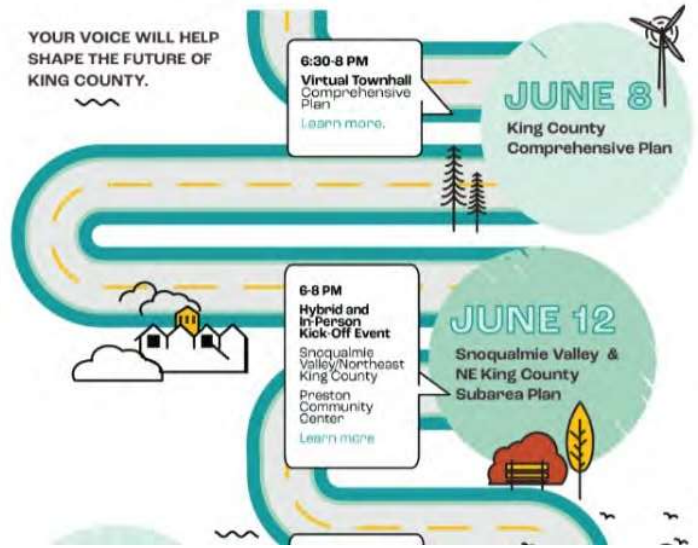
Where can I find supporting documents for how these proposals were evaluated? 

## JOIN US AT AN EVENT

- [June 8](#) | **King County Comprehensive Plan** | 6:30-8 p.m. | Virtual Townhall
- [June 12](#) | **Snoqualmie Valley/Northeast King County Subarea Plan** | 6-8 p.m. | Hybrid In-Person & Virtual Kick-Off | *Preston*

# JOIN US AT AN EVENT

Come talk to us at one of these four upcoming events. There's no wrong door!



- | 6:30-8 p.m. | Virtual Townhall
- [June 12](#) | **Snoqualmie Valley/Northeast King County Subarea Plan** | 6-8 p.m. | Hybrid In-Person & Virtual Kick-Off | *Preston Community Center*
- [June 22](#) | **King County Comprehensive Plan** | 4-8 p.m. | In-Person Open House | *Southgate Roller Rink in White Center*
- [July 10](#) | **Vashon/Maury Island Zoning** | 7-8:30 p.m. | Virtual Meeting

I thank you to the more than 300 people who joined us for our roller skating open house at Southgate Roller Rink on June 22!

Attendees shared feedback on the Comprehensive Plan while enjoying food, music, games, prizes, and free skates. See more photos from the event below



## CONTACT US

Email us at [compplan@kingcounty.gov](mailto:compplan@kingcounty.gov) or visit us at [www.kingcounty.gov/compplan](http://www.kingcounty.gov/compplan)

The infographic features a winding teal path with yellow dashed lines. On the left, a large teal circle contains the date 'JUNE 22' and the text 'King County Comprehensive Plan'. A callout box points to this circle, containing the text: '4-8 PM In-Person Open House Comprehensive Plan Southgate Rollen Park in White Center Learn more'. Below this, a smaller teal circle contains the date 'JULY 10' and the text 'Vashon/Maury Island Zoning'. A callout box points to this circle, containing the text: '7-8:30 PM Virtual Meeting Vashon/Maury Island Zoning Learn more'. The background includes icons of a bench, a house, a bicycle, a wind turbine, and a bar chart.

**JUNE 22**  
King County Comprehensive Plan

4-8 PM  
In-Person Open House  
Comprehensive Plan  
Southgate Rollen Park in White Center  
Learn more

**JULY 10**  
Vashon/Maury Island Zoning

7-8:30 PM  
Virtual Meeting  
Vashon/Maury Island Zoning  
Learn more

Share this [f](#) [X](#) [in](#) [m](#)



# VIRTUAL TOWNHALL

**2024 Comprehensive Plan Public Review Draft**

Thursday, June 8, 2023 | 6:30 – 8 pm



# Meeting Goals

King County is sharing the proposals for the 2024 Comprehensive Plan to **increase transparency** and to provide additional **opportunities for public engagement** during plan development

- ✓ This meeting is an opportunity for members of the public to learn more about the specific proposals, and share input with King County staff
- ✓ King County will use the results of public input to guide the refinement of these proposals for the Executive Recommended Plan, which will be submitted to the King County Council in December 2023, along with a State Environmental Policy Act Draft Environmental Impact Statement.



# BACKGROUND




## Key geographic areas

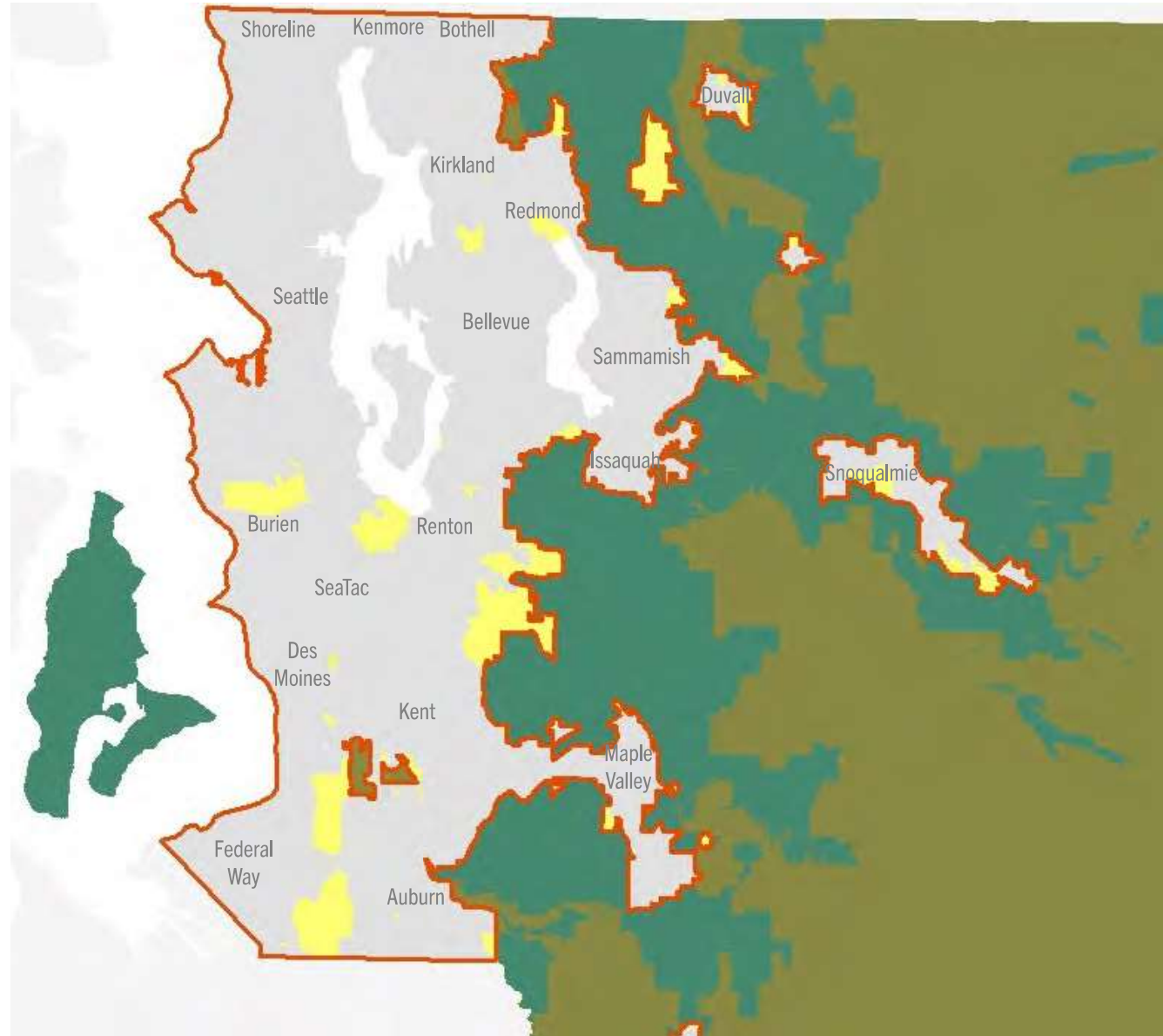
---

 **Urban Growth Area** Housing and job growth is focused in the Urban Growth Area to protect rural and resource lands and deliver efficient services, characterized by higher density development

 **Urban Unincorporated Area** Portions of the Urban Growth Area outside of city limits

 **Rural Area** Outside the Urban Growth Area and Resource Lands, characterized by small-scale farming and forestry and low-density residential development

 **Natural Resource Lands** Designated for agriculture, forestry, or mining





Regionally, **96%** of permitted housing units are in cities and urban areas, helping keep our working lands working

# King County's Comprehensive Plan

- The Comprehensive Plan is unincorporated King County's **local land use plan**.
- Unincorporated King County also has **a key ecological role** in the Puget Sound region. Most of the region's farm, forest, and mineral production areas are located here, as are critical environmental conservation areas.
- The plan also guides how **local and regional services** are provided by the County, such as roads, parks, buses and ferries, wastewater, and solid waste.

# Scoping & public feedback themes

<b>Social Equity</b>	<b>Housing</b>	<b>Climate Change</b>
<ul style="list-style-type: none"><li>• Address racially discriminatory policies</li><li>• Address housing, cultural, and economic displacement</li><li>• Improving health disparities by race and place</li></ul>	<ul style="list-style-type: none"><li>• Plan for and accommodate housing for all incomes</li><li>• Expand housing choices</li><li>• Improve housing equity, access, and stability<ul style="list-style-type: none"><li>○ especially for those earning less than 80 percent of the area median income and those who are Black, Indigenous, People of Color, immigrants, and/or refugees</li></ul></li></ul>	<ul style="list-style-type: none"><li>• Advance Strategic Climate Action Plan and greenhouse gas reduction goals</li><li>• Reduce climate-related impacts for frontline communities</li><li>• Heat islands and urban green spaces</li></ul>

# Schedule

2022				2023				2024
Q1	Q2	Q3	Q4	Q1	Q2	Q3	Q4	Q1-Q4
<b>Create scope</b>	<b>Public input on scope</b> <b>Scope approved</b>	<b>Public survey to inform plan development</b>	<b>Develop early plan proposal concepts</b>	<b>Public input on early concepts</b> <small>(Comment period in February)</small>	<b>Develop and issue Public Review Draft plan for public input</b> <small>(45-day comment period from June - July)</small>	<b>Refine &amp; report back</b>	<b>Final Executive-Recommended Plan</b> <small>(Submitted Dec 2023)</small>	<b>Council Review, Amendment, &amp; Adoption</b> <small>(Adopt by Dec 2024)</small>



**Opportunities to meaningfully shape Plan content**

# PROPOSALS





King County

**YOUR VOICE WILL HELP SHAPE  
THE FUTURE OF KING COUNTY**



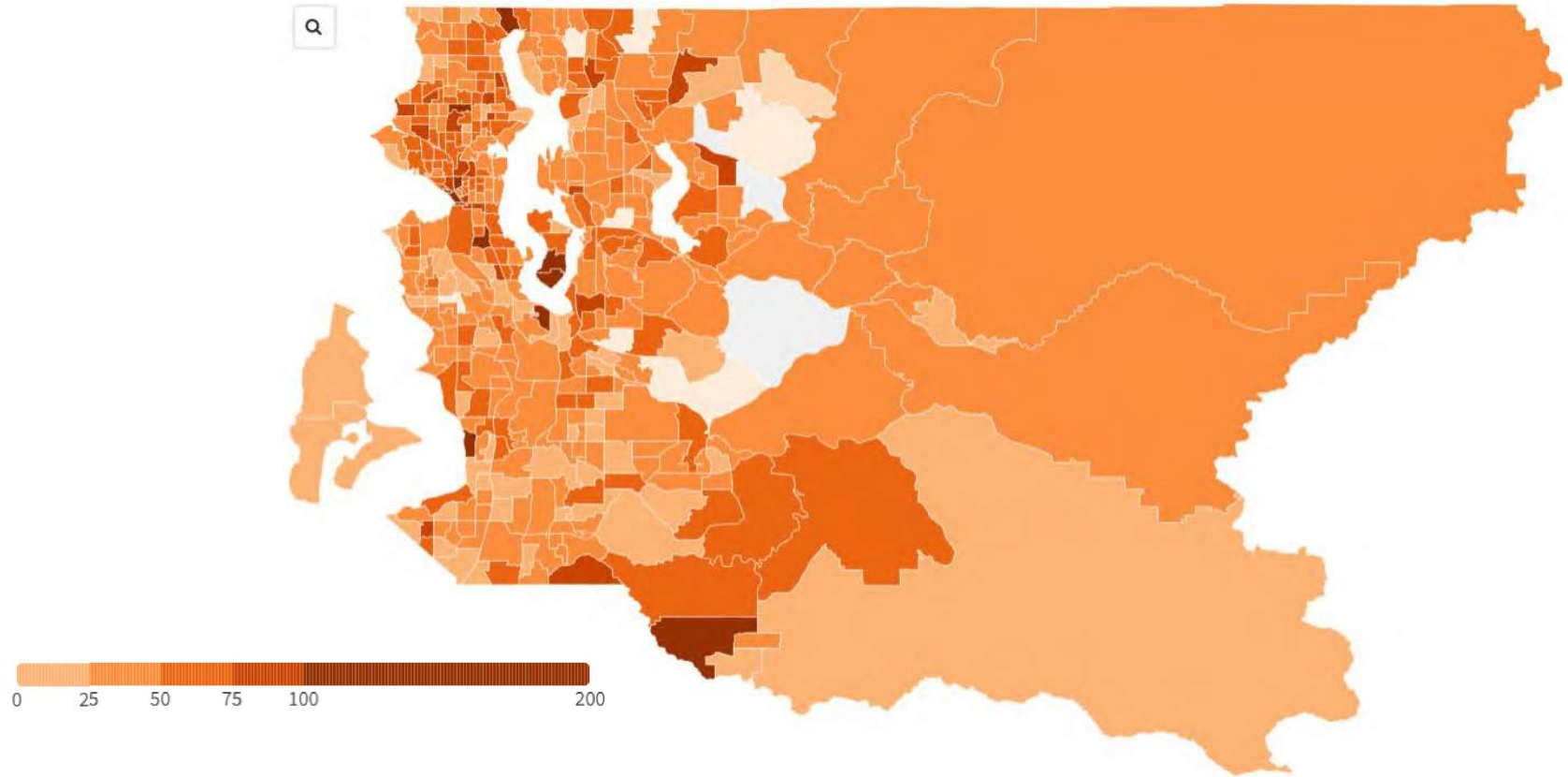
# SOCIAL EQUITY

# Key Equity Scope Topics

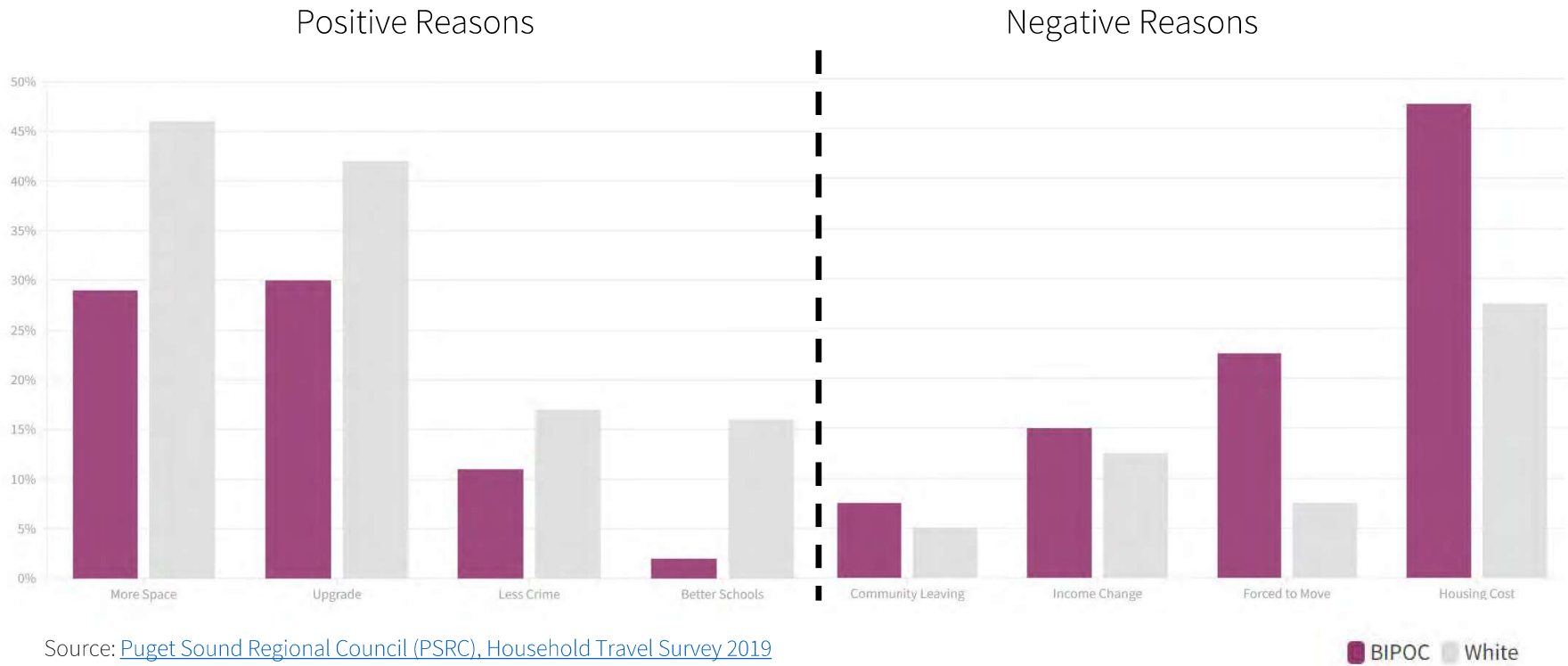


- Integrate a **pro-equity and anti-racist policy framework** into the Comprehensive Plan.
- Reduce **housing displacement**.
- Improve **health equity outcomes** in communities with the greatest and most acute needs.

# Percent Increase in Rent for King County (2010-2019)



In the last five years, about **25% of people who moved** within the region relocated due to reasons associated with displacement



Source: [Puget Sound Regional Council \(PSRC\), Household Travel Survey 2019](#)

■ BIPOC ■ White

# 1 | Equity



When evaluating and implementing its land use policies, programs, investments, and practices, require the County to proactively address issues of **equity, social, and environmental justice**; racially and environmentally disparate health outcomes; and physical, economic, and cultural displacement.

## 2 | Equity



Support **housing stability** and **mitigate and prevent residential displacement** in unincorporated King County through strategies that increase access to affordable housing for historically underrepresented populations who experienced systemic racism or discrimination in accessing housing opportunity.

# 3 | Equity



Create a **voluntary inclusionary housing** incentive program for affordable housing development in unincorporated King County.

# 4 | Equity



Require climate solutions that result in equitable outcomes that benefit **frontline communities.**



# 5 | Equity



Require the County to improve access to **local parks and green spaces** in Opportunity Areas where disparities exist due to historic and ongoing underinvestment

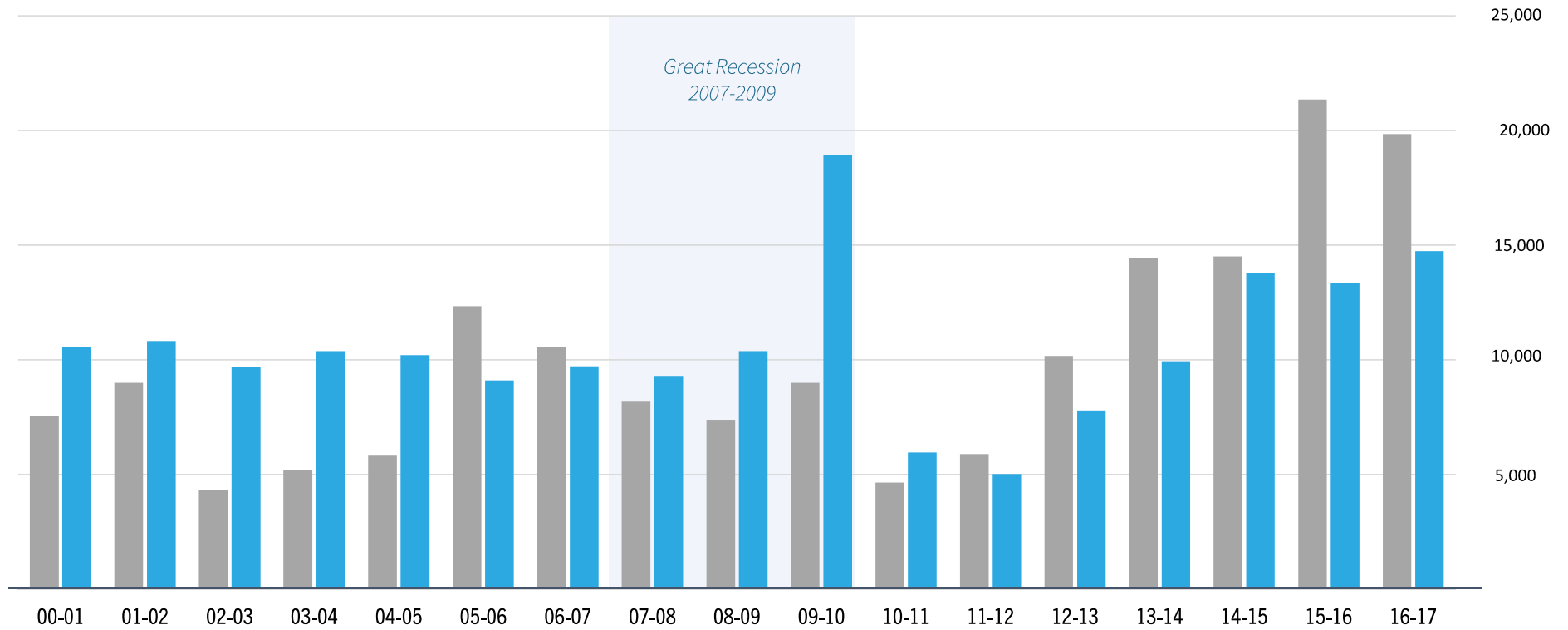
# HOUSING



# Key Housing Scope Topics

- **Improve affordable housing supply**, especially for those who are Black, Indigenous, People of Color, immigrants, and/or refugees and that earn less than 80 percent of the area median income.
- **Expand range of housing options** available at all income levels.

# Housing growth has not kept up



**King County Annual Housing Units & Household Growth from 2001-2018**

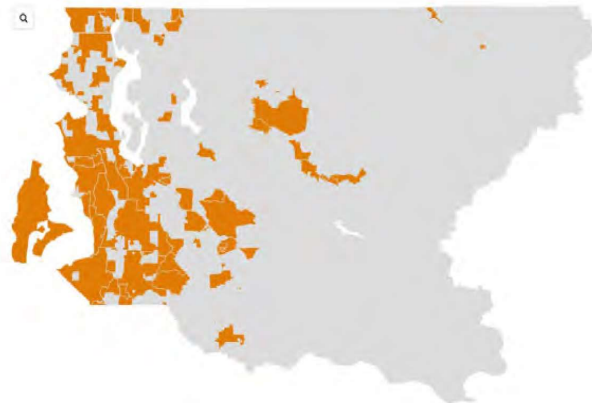
Source: Washington State Office of Financial Management, Puget Sound Regional Council Covered Employment Estimates

■ households ■ housing units

# Areas Affordable to Median Income Families in King County by Race, 2019



**Black and African American**



**Hispanic and Latinx**

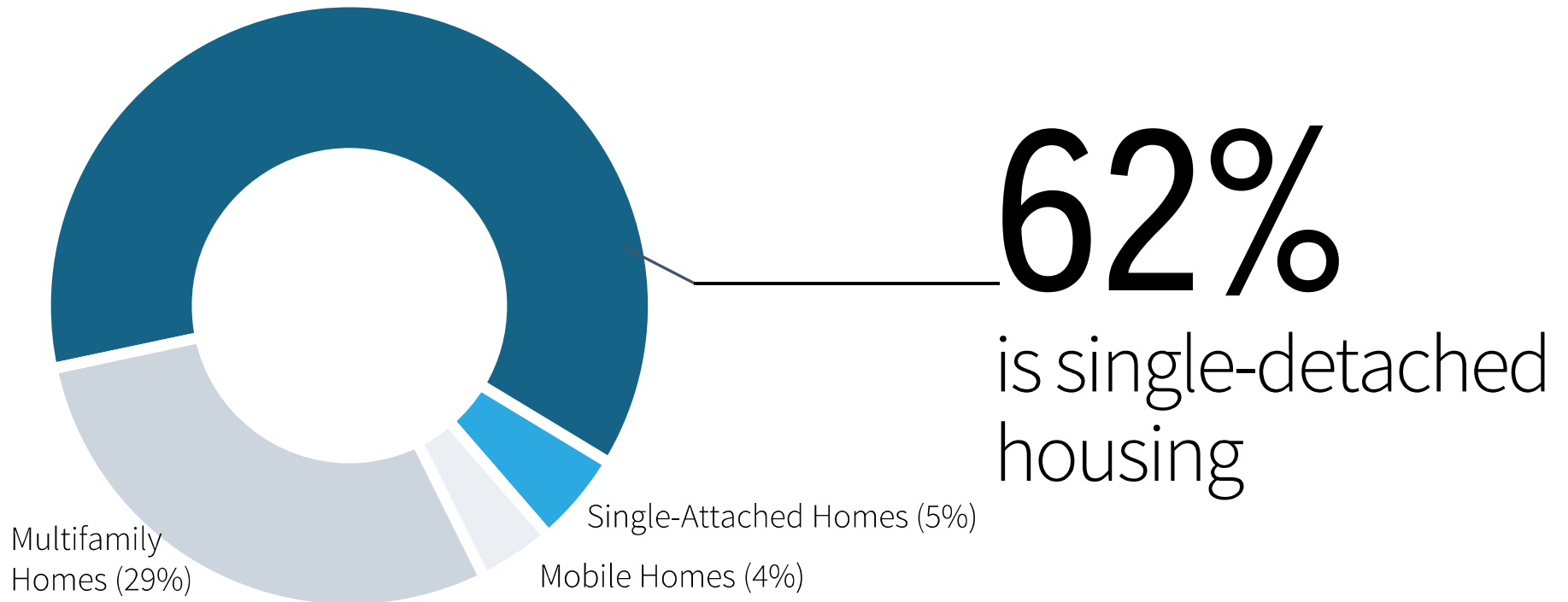


**White**

**King County uses a combination of funding, policy, and collaborative tools to increase housing affordability across income levels.** Deeper levels of affordability require public subsidies while land-based tools like middle housing can help create more moderately affordable homes.

Updates to the Comprehensive Plan Housing Chapter will include **policies** that support anti-displacement, equitable development, climate resilient housing and housing affordable to all incomes; **code changes** will focus on land-use based tools.

# Land use codes and zoning determine the type of homes that are allowed



**62%**  
is single-detached  
housing

# 1 | Housing



In County-funded affordable housing subsidy programs, prioritize the following **affordable housing projects**:

- Rental projects affordable at or below 50 percent of area median income
- Homeownership projects affordable at or below 80 percent of area median income
- Projects in areas where there is a severe shortage of affordable housing



# 2 | Housing



Encourage regional land use and investment strategies that support **community-driven and mixed-income urban developments.**

# 3 | Housing



Expand housing options by increasing the types of housing allowed in low-density urban residential zones to support development of **middle housing**, which is typically more affordable than traditional single-detached homes.

# 4 | Housing



Incentivize development of new affordable housing that includes sufficient two-, three and four-bedroom dwelling units to meet space needs of anticipated households and **promote culturally relevant housing options.**

# CLIMATE CHANGE & ENVIRONMENT

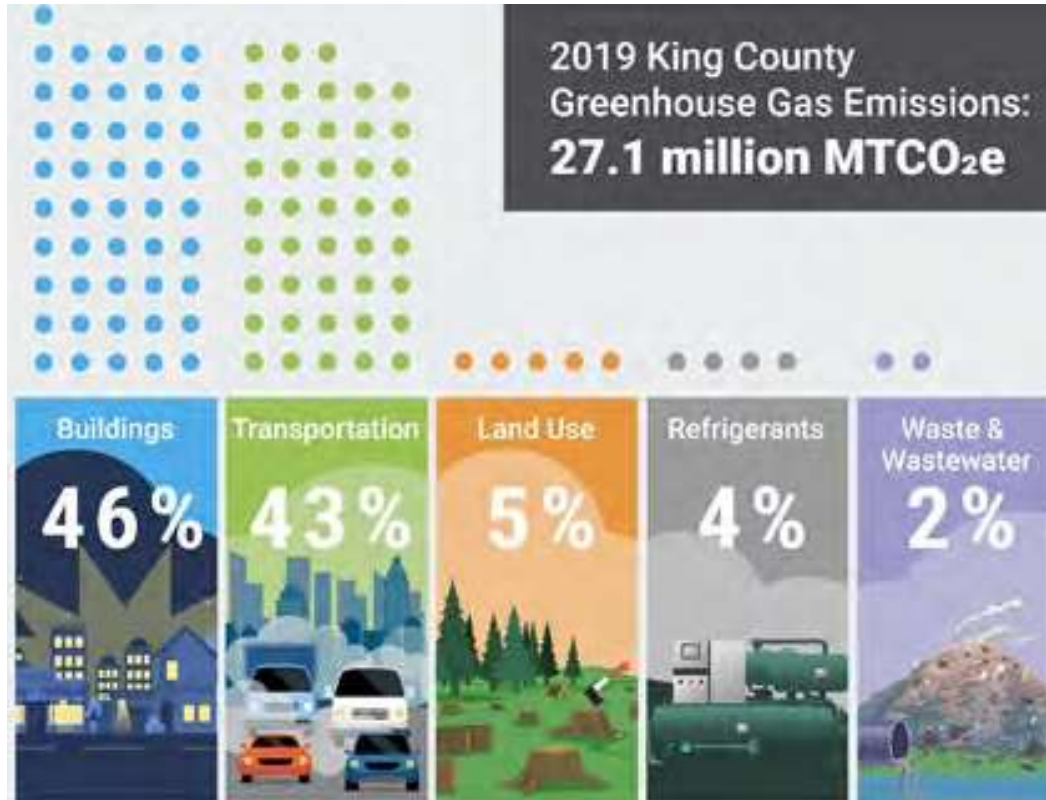


# Key Climate Change & Environment Scope Topics

- Reduce greenhouse gas emissions, support sustainable and resilient communities, and prepare for **climate change**.
- Integrate and implement **Clean Water, Healthy Habitat** goals.
- Increase **land conservation**.

# How is our local climate changing?





# Reducing Emissions

When looking at the sources of geographic emissions from all residents, businesses, and governments - the two largest categories are from the **built environment (46%)** and **transportation (43%)**.

# 1 | Climate Change & Environment



Require development regulations and programs that reduce energy use, increase the use of renewable energy, and **phase out fossil fuel use** in the built environment.



# 2| Climate Change & Environment



Promote investment in **equitable transit-oriented development** to help reduce emissions from the transportation sector.

# 3| Climate Change & Environment



Require the County to take steps to **plan for and reduce wildfire impacts** in the wildland-urban interface in unincorporated King County.

# 4| Climate Change & Environment



Strengthen regulations for **shoreline stabilizations** to limit the use of structural stabilizations and support shoreline development in a manner that avoids the need for future stabilizations

# 5| Climate Change & Environment



Review and update of the County's **critical areas regulations** using best available science.

# 6| Climate Change & Environment



Update **Transfer of Development Rights program** regulations to support conservation goals.

# GENERAL PLANNING

# Key General Planning Scope Topics

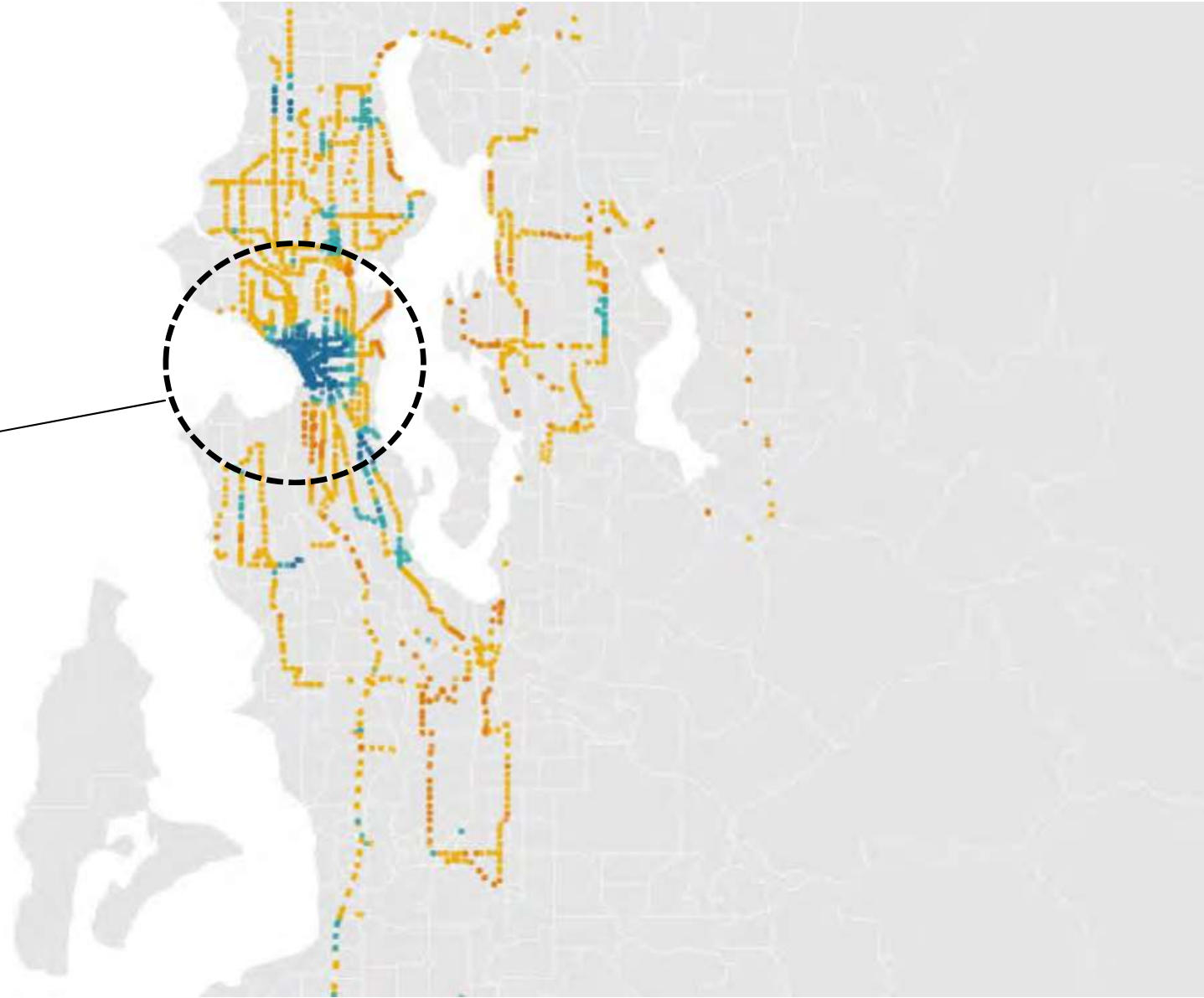


- Update **transportation policies**
- Review **rural and natural resources** regulations
- **Subarea Planning** program actions
- **Land Use and Zoning** studies

# Downtown Seattle

Number of income restricted  
units within a half-mile walkshed  
of existing transit stops

0 1-500 501-1000 1000+





# 1 | General Planning



Support investments that improve **safe, equitable, and accessible opportunities for public transportation services**, pedestrians, bicyclists, car and van pools, and other alternatives to single occupant vehicles – especially where the needs are greatest

## 2 | General Planning



- Reduce impacts of **materials processing** uses and **mining operations**.
- Clarify **where and how resorts are allowed in the Rural Area**.

# 3 | General Planning



Adopt the **Snoqualmie Valley/Northeast King County** Community Service Area Subarea Plan, as well as implementing land use and zoning changes and development regulations. Topics covered include:

- land use and zoning, housing and human services, transportation, environment, open space and parks, services and utilities, and economic development.

Learn more at: <https://publicinput.com/SnoValleyNEKC>

# 4 | General Planning



Update property-specific **zoning conditions** on Vashon-Maury Island, such as:

- Allowing more uses on several commercial and industrial-zoned parcels in Vashon Town, and on several rural-zoned parcels
- Removing several design requirements for buildings in Vashon Town
- Replacing the Vashon Affordable Housing Special District Overlay with the voluntary inclusionary housing program
- Replacing the two-story limit on commercial development in Vashon Town with height limits
- Amendments to a Groundwater Protection Special District Overlay are also being evaluated and the County welcomes input on possible changes we should consider
- Learn more at: <https://publicinput.com/vashonsubarea>

# 5 | General Planning



Review **land use designations and zoning classifications** of properties at the following locations:

- Vashon Grange
- Kent Pet Cemetery
- Industrial site outside of Maple Valley
- I-90/SR-18 Interchange
- Black Diamond Fire Station

# DISCUSSION

# CLOSING REMARKS

# What's next?

- **The Public Review Draft of the 2024 Update will be available for public review and comment until July 15.** In the meantime, here are other opportunities to provide input and/or share with folks who were unable to make it today:
  - ✓ In-Person Open House: June 22, 4-8 PM, Southgate Roller Rink
  - ✓ Online feedback form: [publicinput.com/2024Plan](https://publicinput.com/2024Plan)
  - ✓ Email: [CompPlan@kingcounty.gov](mailto:CompPlan@kingcounty.gov)
- **Please tell us how we did!** We use these to understand how to make these virtual meetings a better experience for you.



# THANK YOU





Appendix D.4 - Community Needs List Website

Translate

## Community Needs List Program

### What do you want for your community?

Do you live in an unincorporated area of King County, such as Skyway, White Center, East Renton Highlands, Tiger Mountain, Cedar River, Fairwood, or other areas? If so, we want to hear from you!

Share your ideas for making your community a better place to live. A good idea includes a location, what it is that you think is needed, and the reason why you think it would be helpful.

Idea examples:

- **At Skyway Library or elsewhere in the community:** Hold regularly scheduled public health information sessions to raise health awareness for all ages.
- **At Coalfield Park:** Add parking at Coalfield Park to increase parking for the playfields. They are often crowded and the street parking is not safe for children.

Every two-three years, King County's Department of Local Services works with the unincorporated area residents to identify the funding priorities for their communities, the Community Needs Lists. The 2021-2022 Community Needs Lists are in the documents section at the bottom of this website.

These lists are important for informing the planning and budgeting of King County's work in unincorporated King County, King County Departments must identify which of their projects are related to the Community Needs Lists when they submit their budget requests to the King County Council. The projects proposed for the 2023-2024 budget are in also in the documents section below.

The King County Department of Local Services provides resources and information sessions to support this effort. It also works with the other County departments to make sure they participate in the process.

### Frequently Asked Questions

- What are Community Needs Lists? ▼
- Why are Community Needs Lists important? ▼
- How are the Community Needs Lists developed? ▼
- Which areas can participate in this survey? ▼
- Which ideas are put on the Community Needs List? ▼
- What happens with my idea? ▼
- Am I in unincorporated King County? ▼
- Is the survey the only way to submit ideas? ▼
- How can I be part of this process? ▼
- How are the Community Needs Lists impacted by the current King County budget shortfall? ▼

### Documents

- The 2021-2022 Community Needs Lists give you an idea of the types of projects that were considered



### Presentation?

Would you like us to present this information to your local community organization, school, place of worship, or housing association? Please contact us at the email address below!

### Project Timeline

- COMPLETE**  
**Nov. '22 - Jan. '23**  
Community members and King County staff co-create an improved process.
- COMPLETE**  
**Apr. - Jun. '23**  
King County develops the survey per the co-creation team instructions.
- COMPLETE**  
**Jul. - Aug. '23**  
The survey is open.
- COMPLETE**  
**Sept - Oct. 23**  
Initial feasibility review phase



## Documents

- The 2021-2022 Community Needs Lists give you an idea of the types of projects that were considered within the County's scope of work and feasible. These items will be evaluated by community members for addition to the next Community Needs Lists. [To access the documents, please click here.](#)
- The 2023-2024 budget-related documents show you which community needs lists items were related to work the County already does and which were newly proposed items by King County departments. [To access the documents, please click here.](#)
- The CNL Marketing Materials. [To access the folder, please click here.](#)
- The 2023 CNL survey raw data. To access the folder, [please click here.](#)

## Contact us

If you have comments or questions, please contact:

**Sara Estiri**

Program Manager

Email: [sestiri@kingcounty.gov](mailto:sestiri@kingcounty.gov)

Office phone: 206-477-5334

### Sept - Oct. '23

Initial feasibility review phase

LIVE

### Oct. '23 - TBD

Equity Impact Review

PLANNED

### Jan - Feb. '24 (TBD)

Departments review the feasibility of ideas.

PLANNED

### Mar. - Apr. '24 (TBD)

King County staff pulls together the final community needs lists.

PLANNED

### Jun. - Sept. '24 (TBD)

Departments develop their King County budget requests for 2025.

PLANNED

### Oct. - Dec. '24 (TBD)

The King County Council reviews the proposed budget. It makes changes and then approves the King County budget.

Share this



## Guardrail Program: 2023

The 2023 Guardrail Program concluded in July.



Photo: K. 2023 - Guardrail installation project - Route 20 (SR 20) East from SR 160 to SR 161 at SR 16

**Status update**  
 As of July 2023, the 2023 Guardrail Program is complete. For more information regarding the program and other projects, visit [www.la.gov](#).

**Contact**  
 Road Safety Information  
 Road Safety Information  
 Phone: (916) 223-7377  
[View a map](#) | [Request a Service](#)

### 147 Road Repairs

#### Work completed

King County Department of Transportation has completed 147 road repairs throughout King County since the start of the 2023 Guardrail Program.

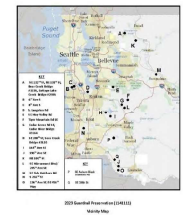


Photo: K. 2023 - Guardrail installation project - Route 20 (SR 20) East from SR 160 to SR 161 at SR 16



Photo: K. 2023 - Guardrail installation project - Route 20 (SR 20) East from SR 160 to SR 161 at SR 16

#### 2023 Guardrail work locations map



#### 2023 Guardrail work locations

Location	Project name	Work status
SR 160 at SR 161	Guardrail upgrade, double installation	Complete
SR 160 at SR 162	Guardrail upgrade, double installation	Complete
SR 160 at SR 163	Guardrail upgrade, double installation	Complete
SR 160 at SR 164	Guardrail upgrade, double installation	Complete
SR 160 at SR 165	Guardrail upgrade, double installation	Complete
SR 160 at SR 166	Guardrail upgrade, double installation	Complete
SR 160 at SR 167	Guardrail upgrade, double installation	Complete
SR 160 at SR 168	Guardrail upgrade, double installation	Complete
SR 160 at SR 169	Guardrail upgrade, double installation	Complete
SR 160 at SR 170	Guardrail upgrade, double installation	Complete
SR 160 at SR 171	Guardrail upgrade, double installation	Complete
SR 160 at SR 172	Guardrail upgrade, double installation	Complete
SR 160 at SR 173	Guardrail upgrade, double installation	Complete
SR 160 at SR 174	Guardrail upgrade, double installation	Complete
SR 160 at SR 175	Guardrail upgrade, double installation	Complete
SR 160 at SR 176	Guardrail upgrade, double installation	Complete
SR 160 at SR 177	Guardrail upgrade, double installation	Complete
SR 160 at SR 178	Guardrail upgrade, double installation	Complete
SR 160 at SR 179	Guardrail upgrade, double installation	Complete
SR 160 at SR 180	Guardrail upgrade, double installation	Complete
SR 160 at SR 181	Guardrail upgrade, double installation	Complete
SR 160 at SR 182	Guardrail upgrade, double installation	Complete
SR 160 at SR 183	Guardrail upgrade, double installation	Complete
SR 160 at SR 184	Guardrail upgrade, double installation	Complete
SR 160 at SR 185	Guardrail upgrade, double installation	Complete
SR 160 at SR 186	Guardrail upgrade, double installation	Complete
SR 160 at SR 187	Guardrail upgrade, double installation	Complete
SR 160 at SR 188	Guardrail upgrade, double installation	Complete
SR 160 at SR 189	Guardrail upgrade, double installation	Complete
SR 160 at SR 190	Guardrail upgrade, double installation	Complete
SR 160 at SR 191	Guardrail upgrade, double installation	Complete
SR 160 at SR 192	Guardrail upgrade, double installation	Complete
SR 160 at SR 193	Guardrail upgrade, double installation	Complete
SR 160 at SR 194	Guardrail upgrade, double installation	Complete
SR 160 at SR 195	Guardrail upgrade, double installation	Complete
SR 160 at SR 196	Guardrail upgrade, double installation	Complete
SR 160 at SR 197	Guardrail upgrade, double installation	Complete
SR 160 at SR 198	Guardrail upgrade, double installation	Complete
SR 160 at SR 199	Guardrail upgrade, double installation	Complete
SR 160 at SR 200	Guardrail upgrade, double installation	Complete

#### Frequently asked questions

- Why are you putting guardrails on these roads? [View answer](#)
- What is the budget for the 2023 guardrail program? [View answer](#)
- How long will it take to complete the guardrail installation on these roads? [View answer](#)
- Are there any other projects planned for these roads? [View answer](#)
- How long will the roads be closed? [View answer](#)
- Are there any other projects planned for these roads? [View answer](#)

#### Related Topics

- Projects and programs
- Plans and reports
- Road work
- Road Safety Information
- Road Safety Information
- Road Safety Information



Details

### Why do you need better drainage?

Water damage is a leading cause of structural failure in buildings. Poor drainage can lead to water infiltration, mold, and rot. Proper drainage systems are essential for protecting your property and ensuring its longevity.



Proper drainage is crucial for maintaining the structural integrity of your building. It prevents water from pooling around the foundation, which can lead to soil erosion and foundation settlement. Additionally, it helps prevent water damage to interior walls and ceilings, reducing the risk of mold and mildew growth.



### Project and funding sources

Project Number: 172nd Street Lane Improvement



# Sidewalk Repair and Tree Removal



**King County**

Local Services

Road Services Division

26th Ave. SW from SW 106th St./SW 107th Way to SW 112th St.

## Sidewalk Repairs Coming to Your Neighborhood

King County Road Services will be in your neighborhood to repair cracked and damaged sidewalks caused by tree root growth. The county also will remove two trees that are causing the sidewalk to lift and crack and install root barriers to prevent the remaining trees from damaging the new sidewalk panels. In conjunction with this work, one additional tree will be evaluated and removed if it qualifies as a hazard. We will work with the King County Department of Natural Resources and Parks to plant replacement trees in nearby locations. This work is part of our ongoing sidewalk repair program to improve access for walkers, wheelchairs, and strollers. It is informed by our Americans with Disabilities, or ADA, plan. Find out more about our Accessibility Program. Visit: [Kingcounty.gov/RoadsADAPlan](https://kingcounty.gov/RoadsADAPlan)

### Why can't new trees be planted next to the curb?

We cannot replace trees in the same place because it is too close to the road and there is not enough room to allow tree roots to grow without causing damage.



We will replace 14 sidewalk sections and remove up to three trees. The county will replant replacement trees nearby.



*This section of sidewalk at 11011 26th Ave. SW is one section to be replaced with new concrete. The tree and its roots will also be removed.*

### What to expect

Crews will remove all the trees before replacing 14 broken sidewalk panels. We know trees are an important part of our community and because of that the county will plant replacement trees in a nearby location in the fall. Planting in the fall gives new trees and saplings the best chance of thriving.

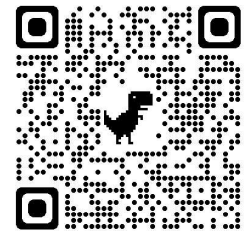
### When will this work occur?

Crews are scheduled to start in Sept. or early Oct. 2023 and will remove all the trees before replacing the broken sidewalk panels. Due to availability and weather, it's possible the work will occur in Spring 2024.

### What can residents do?

Sign up for notifications to learn when crews will be in your neighborhood. Enter your email address or phone number and then scroll to Road Alerts and select White Center Sidewalk Repair.

Visit: <https://public.govdelivery.com/accounts/WAKING/subscriber/new>



### Contact information

We want to hear from you. Let us know if you have questions or comments about this work.

 **Brent Champaco, Public Information Officer**  
206-477-9094

 [AskLocalServices@kingcounty.gov](mailto:AskLocalServices@kingcounty.gov)



**King County**

Local Services  
**Road Services Division**  
KSC-LS-0313  
201 S. Jackson St.  
Seattle, WA 98104

# Learn more about sidewalk repairs coming to your neighborhood

រដ្ឋបាលស្រុកក្រុងក្រីនហ្គាម កំពុងស្រាវជ្រាវស្វែងរកវិធីសាស្ត្រដើម្បីជួយសម្រួលផ្លូវជុំវិញតំបន់របស់យើង។ ប្រសិនបើអ្នកមានសំណួរ ឬចង់ដឹងបន្ថែមទៀត ទូរស័ព្ទ 206-477-3800 ឬផ្ញើសារអ៊ីម៉ែល [AskLocalServices@kingcounty.gov](mailto:AskLocalServices@kingcounty.gov) ។

Đề có các thông tin này bằng tiếng Việt, xin gọi số 206-477-3800 hoặc gửi điện thư đến

.ama iimayl u dir AskLocalServices@kingcounty.gov

Si aad u weyddiisato inaad ku hesho macluumaadkan Af-Soomaali, fadlan wac 206-206-477-3800

.mni niishite AskLocalServices@kingcounty.gov

Чтобы запросить эту информацию в формате или на другом языке, звоните 206-477-3800

.kingcounty.gov 로 이메일을 보내주시기 바랍니다.

@다를 형식이거나 언어로 이 정보를 요청하려면 206-477-3800 번으로 문의하거나 AskLocalServices

。またメールにてお問い合わせください

その他の形式または言語での情報をご希望される場合は、206-477-3800 までお電話いただくか、または [AskLocalServices@kingcounty.gov](mailto:AskLocalServices@kingcounty.gov)

.de correo electrónico a AskLocalServices@kingcounty.gov

Para solicitar esta información en Español, llamar al 206-477-3800 o envíe un mensaje

如要素取本資料的其他格式或語言，請致電 206-477-3800 或傳送電郵至 [AskLocalServices@kingcounty.gov](mailto:AskLocalServices@kingcounty.gov)

.AskLocalServices@kingcounty.gov ទូរស័ព្ទ 206-477-3800

206-477-3800 ًا لطلب هذه المعلومات -- يرجى الاتصال بـ AskLocalServices@kingcounty.gov أو بالبريد الإلكتروني، يرجى الاتصال بـ 206-477-3800

AskLocalServices@kingcounty.gov រ.ទ.ស. 206-477-3800

206-477-3800 រ.ទ.ស. 206-477-3800 រ.ទ.ស. 206-477-3800 រ.ទ.ស. 206-477-3800

or email [AskLocalServices@kingcounty.gov](mailto:AskLocalServices@kingcounty.gov).

To request this information in another format or language, call 206-477-3800 (Relay 711)



# Speed limit change coming to 51st Avenue S.

Posted speed limit to change from 40 mph to 35 mph



**King County**

Local Services

**Road Services Division**

## New speed limit to start in March 2023

King County Road Services is lowering the speed limit from 40 mph to 35 mph between S. 318th and S. 316th streets.

### What to expect

The current 35 mph speed limit on 51st Ave. S./ S. 321st St. will be extended roughly 600-feet north to S. 316th St. (see map). The existing 40 mph speed limit north of S. 316th St. remains in place.

### Why is this change needed?

This change provides a consistent speed limit on 51st Avenue S./S. 321st Street between the all-way stop at the intersection of S 316th Street and traffic signal at Peasley Canyon Road.

### When does the new speed limit go into effect?

King County will replace the current "40 mph" speed limit signs with new, "35 mph" signs in March 2023.

Once the new signs are in place, the 35 mph speed limit goes into effect.

### Contact information

We want to hear from you. Let us know if you have questions or comments about this work.



**Broch Bender, Communications**  
(206) 263-1189



**AskLocalServices@kingcounty.gov or**  
**Bbender@kingcounty.gov**



The County is changing the speed limit from 40 mph to 35 mph on a small section of 51st Ave. S to match the existing speed limit to the south.

### Stay in touch with us

**24/7 Road Helpline - 206-477-8100**

Call us for help with road maintenance and traffic safety issues, such as downed stop signs, signals that are out or trees over the roadway — 24 hours a day.

- ▶ [kingcounty.gov/Roads](https://kingcounty.gov/Roads)
- ▶ **Twitter: @kcroads**
- ▶ [kingcounty.gov/MyCommute](https://kingcounty.gov/MyCommute)



Local Services  
Road Services Division  
KSC-LS-0313  
201 S. Jackson St.  
Seattle, WA 98104

To request this information in another format or language, call 206-477-3800 (Relay 711)

or email [AskLocalServices@kingcounty.gov](mailto:AskLocalServices@kingcounty.gov).

የሆነ መረጃ በሌላ ቅጽ ወይም ቋንቋ ለማግኘት፡ በ 206-477-3800 ላይ ይደውሉ ወይም በ

[AskLocalServices@kingcounty.gov](mailto:AskLocalServices@kingcounty.gov) ላይ ይጻፉ::

206-477-3800 ላይ ለሚገኝ -- ንግድ ለማግኘት -- የሥራ ቅጽ ወይም የሥራ ቅጽ ለማግኘት ይጻፉ::

如要索取本資料的其他格式或語言，請致電 206-477-3800 或傳送電郵至 [AskLocalServices@kingcounty.gov](mailto:AskLocalServices@kingcounty.gov)

Para solicitar esta información en Español, llamar al 206-477-3800 o envíe un mensaje

.de correo electrónico a [AskLocalServices@kingcounty.gov](mailto:AskLocalServices@kingcounty.gov)

その他の形式または言語での情報をご希望される場合は、206-477-3800 までお電話いただくか、または

。 [AskLocalServices@kingcounty.gov](mailto:AskLocalServices@kingcounty.gov) まで Eメールにてお問い合わせください

@ 다른 형식이나 언어로 이 정보를 요청하려면 206-477-3800 번으로 문의하거나 [AskLocalServices@kingcounty.gov](mailto:AskLocalServices@kingcounty.gov)

kingcounty.gov 로 이메일을 보내주세요 부탁드립니다

Чтобы запросить эту информацию в другом формате или на другом языке, звоните 206-477-3800

или пишите [AskLocalServices@kingcounty.gov](mailto:AskLocalServices@kingcounty.gov)

Si aad u weyddiisato inaad ku hesho macluumaadkan Af-Soomaali, fadlan wac 206-206-477-3800

.ama iimayl u dir [AskLocalServices@kingcounty.gov](mailto:AskLocalServices@kingcounty.gov)

Để có các thông tin này bằng tiếng Việt, xin gọi số 206-477-3800 hoặc gửi điện thư đến

[AskLocalServices@kingcounty.gov](mailto:AskLocalServices@kingcounty.gov).

ផ្ញើស្នើសុំព័ត៌មាននេះជាមួយភាសាខ្មែរ សូមទូរស័ព្ទទៅលេខ 206-477-3800 ឬផ្ញើស្នើសុំ

[AskLocalServices@kingcounty.gov](mailto:AskLocalServices@kingcounty.gov) ។

# Speed limit increase coming to 238th Ave. NE

Posted speed limit to change from 30 mph to 35 mph



**King County**

Local Services

**Road Services Division**

## New speed limit to start in March 2023

King County Road Services is raising the speed limit from 30 mph to 35 mph on a section of 238th Avenue NE in your neighborhood.

### What to expect

We will raise the speed limit on a 0.6 mile stretch of 238th Avenue NE between NE Union Hill Road and NE 80th Street (see map at right).

### Why is this change needed?

There is a 0.6 mile stretch of 238th Avenue NE between NE Union Hill Road and NE 80th Street that is currently posted at a lower speed limit than the rest of the road. This 0.6-mile stretch is posted at 30 mph, and the rest of the road is posted at 35 mph.

This change provides a consistent 35 mph speed limit on 238th Avenue NE between NE Novelty Hill Road and NE Union Hill Road.

### When does the new speed limit go into effect?

King County will replace the current "30 mph" speed limit signs with new, "35 mph" signs in March 2023.

Once the new signs are in place, the 35 mph speed limit goes into effect.

### Contact information

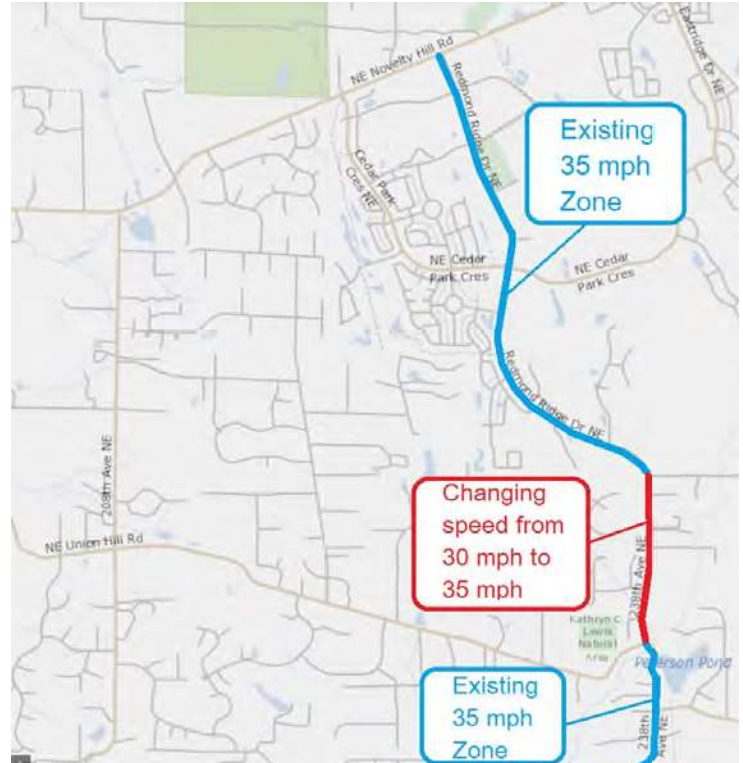
We want to hear from you. Let us know if you have questions or comments about this work.



**Broch Bender, Communications**  
(206) 263-1189



**AskLocalServices@kingcounty.gov** or  
**Bbender@kingcounty.gov**



The County is changing the speed limit from 30 mph to 35 mph on a section of 238th Ave. NE to match the speed limit of the rest of the road.

### Stay in touch with us

**24/7 Road Helpline - 206-477-8100**

Call us for help with road maintenance and traffic safety issues, such as downed stop signs, signals that are out or trees over the roadway — 24 hours a day.

- ▶ [kingcounty.gov/Roads](https://kingcounty.gov/Roads)
- ▶ **Twitter: @kcroads**
- ▶ [kingcounty.gov/MyCommute](https://kingcounty.gov/MyCommute)



Local Services  
Road Services Division  
KSC-LS-0313  
201 S. Jackson St.  
Seattle, WA 98104

To request this information in another format or language, call 206-477-3800 (Relay 711)

or email [AskLocalServices@kingcounty.gov](mailto:AskLocalServices@kingcounty.gov).

የሆነ መረጃ በሌላ ቅጽ ወይም ቋንቋ ለማግኘት፡ በ 206-477-3800 ላይ ይደውሉ ወይም በ

[AskLocalServices@kingcounty.gov](mailto:AskLocalServices@kingcounty.gov) ላይ ይጻፉ::

206-477-3800 ላይ ለሚገኝ ደንበኞች ለማግኘት ይጻፉ::

[AskLocalServices@kingcounty.gov](mailto:AskLocalServices@kingcounty.gov) ላይ ይጻፉ::

如要索取本資料的其他格式或語言，請致電 206-477-3800 或傳送電郵至 [AskLocalServices@kingcounty.gov](mailto:AskLocalServices@kingcounty.gov)

Para solicitar esta información en Español, llamar al 206-477-3800 o envíe un mensaje

[.de correo electrónico a AskLocalServices@kingcounty.gov](mailto:AskLocalServices@kingcounty.gov)

その他の形式または言語での情報をご希望される場合は、206-477-3800 までお電話いただくか、または

[AskLocalServices@kingcounty.gov](mailto:AskLocalServices@kingcounty.gov) まで Eメールにてお問い合わせください

@ 다른 형식이나 언어로 이 정보를 요청하려면 206-477-3800 번으로 문의하거나 [AskLocalServices@kingcounty.gov](mailto:AskLocalServices@kingcounty.gov)

[kingcounty.gov](mailto:kingcounty.gov) 포 이메일링을 보내주세요 부탁드립니다

Чтобы запросить эту информацию в другом формате или на другом языке, звоните 206-477-3800

[или пишите AskLocalServices@kingcounty.gov](mailto:AskLocalServices@kingcounty.gov)

Si aad u weyddiisato inaad ku hesho macluumaadkan Af-Soomaali, fadlan wac 206-206-477-3800

[.ama iimayl u dir AskLocalServices@kingcounty.gov](mailto:AskLocalServices@kingcounty.gov)

Để có các thông tin này bằng tiếng Việt, xin gọi số 206-477-3800 hoặc gửi điện thư đến

[AskLocalServices@kingcounty.gov](mailto:AskLocalServices@kingcounty.gov)

ផ្ញើស្នើសុំព័ត៌មាននេះជាមួយភាសាខ្មែរ សូមទូរស័ព្ទលេខ 206-477-3800 ឬផ្ញើស្នើសុំ

[AskLocalServices@kingcounty.gov](mailto:AskLocalServices@kingcounty.gov)

# Ames Lake Trestle Bridge Replacement Project



**King County**  
Department of Local Services  
Road Services Division

## Project overview

King County plans to begin work to replace the 100-year-old **Ames Lake Trestle Bridge** in 2024.

The new bridge will not have vehicle weight restrictions and will improve sight distance by widening and straightening the road.

## Online community meeting

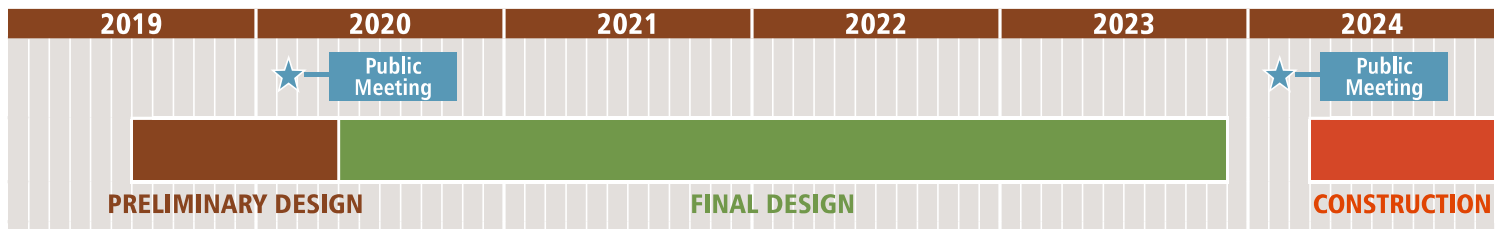
We will hold an online community meeting about the project in early 2024. The meeting date will be posted to the project website. We will also mail a reminder postcard.

## What to expect during construction

- ▶ The work will take approximately eight months. During construction, Ames Lake-Carnation Road, between W. Snoqualmie Valley Road NE and NE 52nd Street, will be closed at the bridge location.
- ▶ All traffic, including emergency vehicles and school buses, will follow alternative routes during this eight-month construction period.

## Project schedule

King County has completed the design of the replacement bridge, right-of-way acquisitions and environmental permitting, and we are scheduled to select the contractor in early 2024. Utility relocation work at the bridge may require temporary lane restrictions or single-day full road closures ahead of construction. The extended road closure will start in early spring 2024 so that the new bridge can reopen by the end of the year.



Bridge Approach

## Stay informed about construction

kingcounty.gov/mycommute | **TWITTER:** @KCRoads

### CONTACT US OR SIGN UP FOR PROJECT UPDATES:

Broch Bender, Communications at [bbender@kingcounty.gov](mailto:bbender@kingcounty.gov) or 206-263-1189

**24-7 ROAD HELPLINE:** 800-527-6237

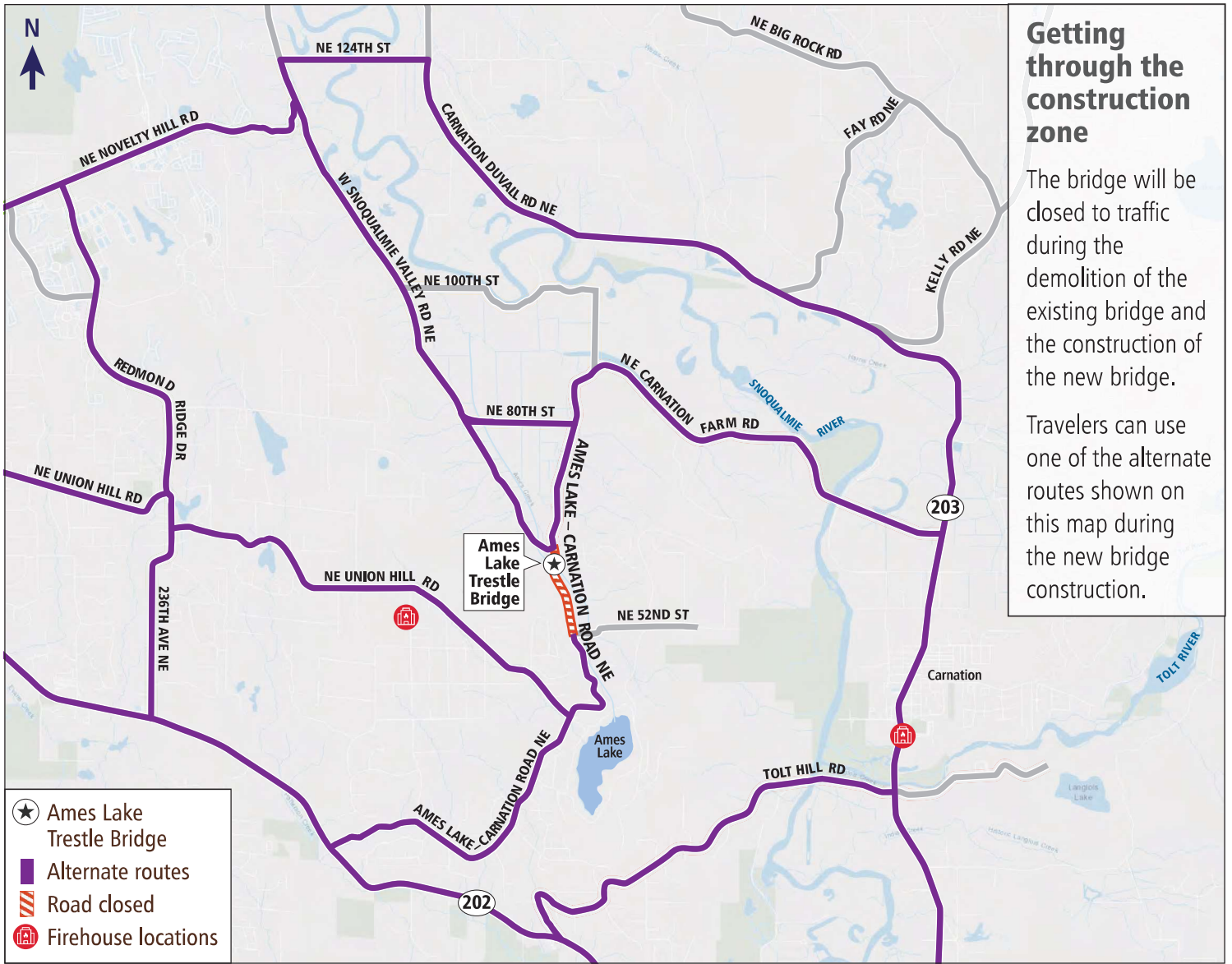
### ALTERNATIVE FORMATS AVAILABLE:

206-477-3832 | TTY Relay: 711

### PROJECT WEBSITE:

[www.kingcounty.gov/ameslakebridge](http://www.kingcounty.gov/ameslakebridge)





## Why King County is replacing this bridge



Creosote-treated timber piles are decaying.



Bridge timber structure is over 100 years old.

**TITLE VI:** It is King County's policy to assure that no person shall, on the grounds of race, color, or national origin, as provided by Title VI of the Civil Rights Act of 1964, be excluded from participation in, be denied the benefits of, or be otherwise discriminated against under any of its federally funded programs and activities. Any person who believes their Title VI protection has been violated may file a complaint with King County, please contact Lydia Reynolds-Jones at 206-477-8100.

**ADA:** Materials can be provided in a different language for non-English speakers or in alternative formats such as large print, Braille, or audio for persons with disabilities. Please call Road Services at 206-477-8100. Persons who are deaf or hard of hearing may contact us through the Washington Relay Service at 7-1-1.

Para solicitar esta información en Español, sírvase llamar al 206-477-8100 (relevo 711) o envíe un mensaje de correo electrónico a [AskLocalServices@kingcounty.gov](mailto:AskLocalServices@kingcounty.gov).

**PROJECT WEBSITE:** [www.kingcounty.gov/ameslakebridge](http://www.kingcounty.gov/ameslakebridge)

**PROJECT UPDATES:** Contact Broch Bender at [bbender@kingcounty.gov](mailto:bbender@kingcounty.gov) or 206-263-1189

# Road closure: July 17 - August 5

Kent Black Diamond Road SE (Berrydale Ox Bridge)



**King County**

Local Services

Road Services Division

King County Road Services is planning to close Kent Black Diamond Road SE at the Berrydale Ox Bridge, between SE 290th Street and SE 292nd Street, July 17-August 5.

The county will repair the 92-year-old span to keep it in service until funds become available to replace it. Work includes removing damaged decking, replacing worn and rotting timber planks, and repaving the bridge.

Please plan to use the detour route during the closure (see map on back). King County will work to minimize impacts on the community from this project and will reopen the road sooner if work is finished early.



**Get real-time information:**  
[kingcounty.gov/mycommute](https://www.kingcounty.gov/mycommute)

## Find King County Road Services at:

- ▶ [www.kingcounty.gov/roads](https://www.kingcounty.gov/roads)
- ▶ Twitter: @kcroads
- ▶ Facebook: kingcountylocalservices
- ▶ Instagram: @kingcountylocalservices

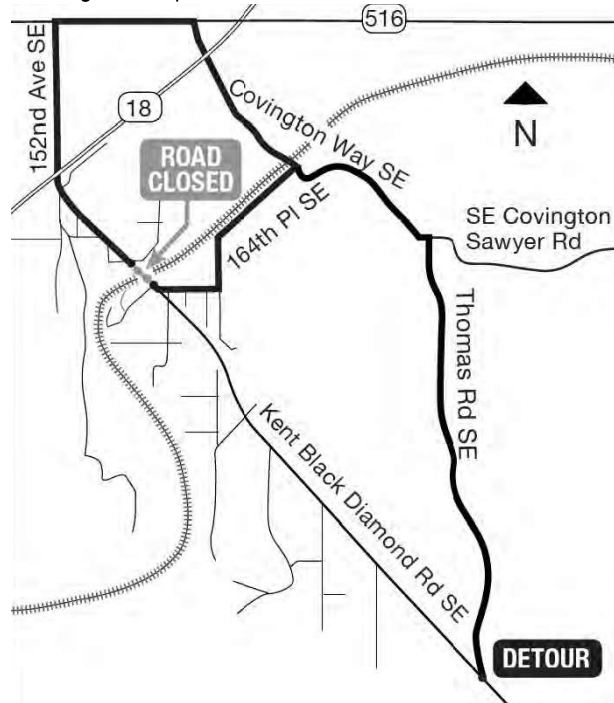
-----  
To request this document in another format or language, please call 206-263-1189 (Relay: 711)  
-----

## Contact:

Broch Bender, Communications  
[bbender@kingcounty.gov](mailto:bbender@kingcounty.gov) | 206-263-1189

**Para solicitar esta información en Español, sírvase llamar al 206-263-1189 (Relevo: 711) o envíe un mensaje de correo electrónico a [bbender@kingcounty.gov](mailto:bbender@kingcounty.gov).**

DocuSign Envelope ID: 695452DF-0DD8-4825-9B99-04FAC8569AC0



**King County Road Services is planning to close Kent Black Diamond Road SE at the Berrydale Ox Bridge, between SE 290th Street and SE 292nd Street, July 17 - August 5. Please use the detour pictured above during this time.**

## Road closure alert

Kent Black Diamond Road SE (Berrydale Ox Bridge)



**King County**

Local Services

**Road Services Division**

**Office of Communications**

KSC-LS-0815

201 S. Jackson St. Seattle, WA 98104

PRSR STD  
US POSTAGE

**PAID**

Seattle, WA  
Permit No. 6966



April 2023

## Nighttime Paving: Cedar Grove Road SE Between SE 168th St. to Issaquah-Hobart Road SE



King County will repave 1.5 miles of northbound SE Cedar Grove Road SE between SE 168th Street and Issaquah-Hobart Road SE.

Paving will occur in the northbound lane nightly from 7:30 p.m. to 5:00 a.m. for up to two weeks in May or June. One lane will remain open at all times. The specific work dates depend on when there is dry weather. Check the website or My Commute for the latest scheduled dates.

Doing the work at night helps reduce the impact on daytime traffic. Residents in the area can expect noise while crews remove portions of the road.



### Learn more:

[www.kingcounty.gov/paving](http://www.kingcounty.gov/paving)



### Get road alerts (My Commute):

[www.kingcounty.gov/mycommute](http://www.kingcounty.gov/mycommute)

### Contact:

Broch Bender, Communications  
[bbender@kingcounty.gov](mailto:bbender@kingcounty.gov) | 206-263-1189

### Find King County Road Services at . . .

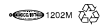
- ▶ [www.kingcounty.gov/roads](http://www.kingcounty.gov/roads)
- ▶ Twitter: @kcroads
- ▶ Facebook: kingcountylocalservices
- ▶ Instagram: @kingcountylocalservices

---

**To request this document in another format or language, please call 206-263-1189 (Relay 711)**

Para solicitar esta información en Español, sírvase llamar al 206-263-1189 (Relevo 711) o envíe un mensaje de correo electrónico a [bbender@kingcounty.gov](mailto:bbender@kingcounty.gov).

**Learn more:**  
[www.kingcounty.gov/paving](http://www.kingcounty.gov/paving)



# Nighttime Paving Cedar Grove Road SE

 **King County**  
Local Services  
**Road Services Division**  
**Office of Communications**  
KSC-LS-0815  
201 S. Jackson St.  
Seattle, WA 98104

PRSR STD  
US POSTAGE  
**PAID**  
Seattle, WA  
Permit No. 6966

## Road closure: August 7 - August 21

415th Way SE at SE 141st Street, south of North Bend, WA



**King County**

Local Services

Road Services Division

King County will close both directions of 415th Way SE at SE 141st Street, south of North Bend, WA. This closure is needed to replace the deteriorating concrete deck girders of the Clough Creek bridge. A posted traffic detour will be in place. Local access for SE 141st Street will be maintained.

- No traffic allowed through work zone: The road will have an open construction pit. All traffic, including emergency response, pedestrians, and bicycles, will be detoured.
- Please see website for more info regarding USPS mail, garbage collection, and deliveries.

### Project website:

[kingcounty.gov/415thWaySECloughCreek](http://kingcounty.gov/415thWaySECloughCreek)

### Find King County Road Services at:

- ▶ [kingcounty.gov/roads](http://kingcounty.gov/roads)
- ▶ Twitter: @kcroads
- ▶ Facebook: [kingcountylocalservices](https://www.facebook.com/kingcountylocalservices)
- ▶ Instagram: @kingcountylocalservices

-----  
To request this document in another format or language, please call 206-263-1189 (Relay: 711)  
-----

### Contact:

Broch Bender, Communications  
[bbender@kingcounty.gov](mailto:bbender@kingcounty.gov) | 206-263-1189

**Para solicitar esta información en Español, sírvase llamar al 206-263-1189 (Relevo: 711) o envíe un mensaje de correo electrónico a [bbender@kingcounty.gov](mailto:bbender@kingcounty.gov).**

DocuSign Envelope ID: 695452DF-0DD8-4825-9B99-04FAC8569AC0



## Road closure: August 7 - August 21

415th Way SE at SE 141st Street, south of North Bend, WA



**King County**

Local Services

**Road Services Division**

**Office of Communications**

KSC-LS-0815

201 S. Jackson St. Seattle, WA 98104

PRSR STD  
US POSTAGE

**PAID**

Seattle, WA  
Permit No. 6966

King County Road Services will close 415th Way SE at SE 141st Street, south of North Bend, WA, August 7-21, 2023. Please use the detour pictured above during this time.

# 284th Avenue SE Culvert Replacement Project

[kingcounty.gov/284thAveSECulvert](http://kingcounty.gov/284thAveSECulvert)



**King County**

Local Services

**Road Services Division**

## Full road closure with detour in summer 2023

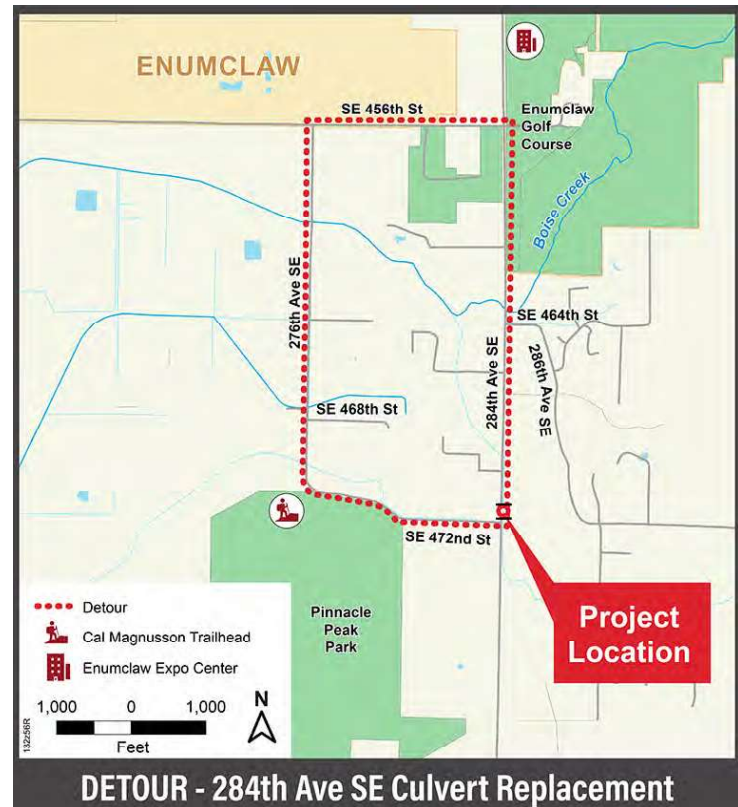
King County will replace the narrow, worn-out small pipe culvert with a much larger and wider concrete box culvert under 284th Avenue SE just north of SE 472nd Street. This larger concrete box culvert will decrease flooding and support fish passage. Construction work requires a full road closure for six weeks: August 9 through September 22.



Crews will be replacing the small culvert under 284th Avenue SE. This will help prevent water from pooling and flooding onto the roadway. (Image courtesy of Google Maps)

### What to expect during construction

- The county must close the road to all traffic as there will be a large pit in the road. This includes cyclists, pedestrians, emergency response vehicles, U.S. Mail service, garbage collection, and all other through traffic.
- The road closure is expected to last six weeks (August 9 through September 22). The estimated project completion date is in October.



**DETOUR - 284th Ave SE Culvert Replacement**

#### Contact us:

Broch Bender, Communications

206-263-1189

Email: [bbender@kingcounty.gov](mailto:bbender@kingcounty.gov)

#### Project website:

[kingcounty.gov/284thAveSECulvert](http://kingcounty.gov/284thAveSECulvert)

Para solicitar esta información en Español, sírvase llamar al 206-263-1189 (Relevo: 711) o envíe un mensaje de correo electrónico a [bbender@kingcounty.gov](mailto:bbender@kingcounty.gov).

More information on back



# 284th Avenue SE Culvert Replacement Project

[kingcounty.gov/284thAveSECulvert](http://kingcounty.gov/284thAveSECulvert)



**King County**

Local Services

**Road Services Division**

## Why is the detour necessary?

- To do this work, crews must dig a deep construction pit across 284th Avenue SE. This pit is necessary to create a strong foundation for the new concrete culvert. This pit makes so all traffic, **including bicycles and pedestrians**, need to use the detour route.

## Why is King County replacing this culvert now?

- The existing metal pipe culvert is rusted and nearing the end of its useful life. A larger concrete box culvert will be installed to decrease flooding and support fish passage.



*Crews will be replacing the small culvert shown here directly below the white car on 284th Avenue SE.*

**Title VI:** It is King County's policy to assure that no person shall, on the grounds of race, color or national origin, as provided by Title VI of the Civil Rights Act of 1964, be excluded from participation in, be denied the benefits of, or be otherwise discriminated against under any of its federally funded programs and activities. Any person who believes their Title VI protection has been violated, may file a complaint with King County, please contact Lydia Reynolds-Jones at 206-477-8100.

**ADA:** Materials can be provided in a different language for non-English speakers or in alternative formats such as large print, Braille, or audio for persons with disabilities. Please call Road Services at 206-477-8100. Persons who are deaf or hard of hearing may contact us through the Washington Relay Service at 7-1-1.

# GREEN RIVER ROAD/94th PLACE SOUTH Road Closure: Nov. 6 - 22

## Road closed from 8 a.m. Monday, November 6, until 5 p.m. Wednesday, November 22 for Cleaning and No Parking Project.

The road closure will be in effect 24-hours a day, 7-days a week during this period. Access will be available only to emergency response vehicles. A detour route will be provided for all other traffic.

This effort will address clearing, cleaning, securing, and enforcing "No Parking" along the road right-of-way areas, which includes the paved road surface and approximately 10 to 20 feet beyond. All vehicles will be required to permanently move -- and barriers, fencing, and "No Parking" signage will be installed.

- All vehicles will be required to leave the area by 8:00 am on Monday, November 6 and will not be allowed to return.
- King County will provide access to a temporary parking lot for people living in vehicles and RVs that are displaced by the project. Vouchers for use of the parking lot will be available prior to the project start date.
- The secure parking lot will be available from 8 a.m. on Saturday, November 4, until noon on Thursday, November 9. Restrooms, handwashing stations, dumpster and some outreach services will be provided.

Outreach teams will be working with individuals in advance of the removal of vehicles and debris. We ask for patience and cooperation to allow for outreach workers to support individuals in the area.

For families experiencing homelessness, please call the  
**Family Shelter Intake Line: 206-245-1026**

Those needing public assistance, please contact the  
**211 Homeless Hotline** by dialing **2-1-1**  
or visiting the **Crisis Clinic website: [www.wa211.org](http://www.wa211.org)**

To request this document in an alternative format,  
please call 206-477-9094 (TTY Relay: 711)

### Contact:

**Department of Local Services  
Communications Team**

AskLocalServices@kingcounty.gov  
206-477-3800

**Para solicitar esta información en Español,  
sírvese llamar al 206-263-1189 (Relevo: 711)  
o envíe un mensaje de correo electrónico  
a [asklocalservices@kingcounty.gov](mailto:asklocalservices@kingcounty.gov).**

# NE Old Cascade Highway Roadway and Drainage Improvements



**King County**  
Local Services  
Road Services Division

**Roadwork July through August 2023 - More info: [kingcounty.gov/OldCascadeHighway](https://kingcounty.gov/OldCascadeHighway)**

## Project overview

This project improves traffic safety and makes NE Old Cascade Highway in Skykomish, Washington better equipped to handle flooding.

The county will replace four worn-out pipe culverts, stabilize an active slide area, and clean the roadside ditches. One large box culvert will replace two of the smaller culverts on the west side of the Miller River.

Replacing old culverts improves safety by preserving the roadway. When pipe culverts under the road fail, the water has nowhere to go except over the roadway. When too much water floods onto the road, it can cause the asphalt to crumble and wash away.

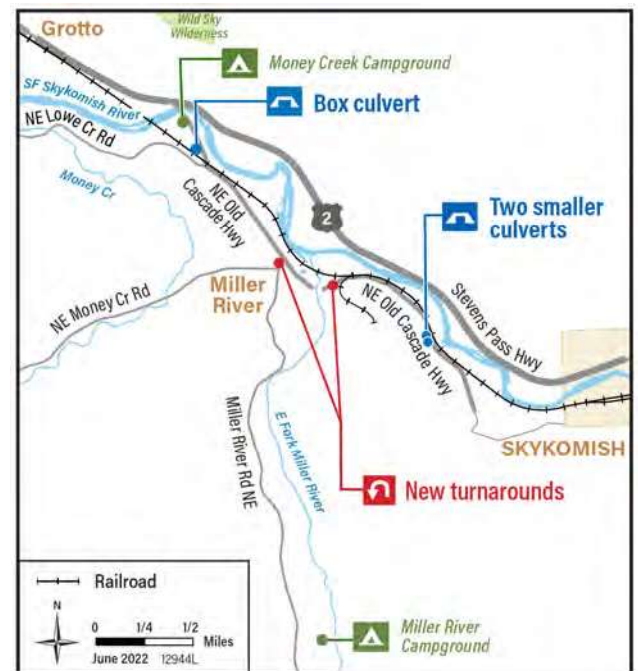
## Full Road Closures July 19 & 26; Lane Restrictions 24/7 thru August

### NE Old Cascade Highway near Hwy 2

- Two full road closures for box culvert work on **July 19 & July 26** from 7:00 a.m. - 1:00 p.m. Times subject to change.
- No traffic allowed thru the workzone when the road is closed. This includes vehicles, pedestrians, bikes, and emergency services.
- When the road is open, the bypass lane will be controlled 24/7 by a single lane stop light until the project is complete.

### East of Miller River

- In June, crews replaced two cracked and rusted metal storm water pipe culverts with new pipes.



**Title VI:** It is King County's policy to assure that no person shall, on the grounds of race, color or national origin, as provided by Title VI of the Civil Rights Act of 1964, be excluded from participation in, be denied the benefits of, or be otherwise discriminated against under any of its federally funded programs and activities. Any person who believes their Title VI protection has been violated, may file a complaint with King County, please contact Lydia Reynolds-Jones at 206-477-8100.

**ADA:** Materials can be provided in a different language for non-English speakers or in alternative formats such as large print, Braille, or audio for persons with disabilities. Please call Road Services at 206-477-8100. Persons who are deaf or hard of hearing may contact us through the Washington Relay Service at 7-1-1.

**Para solicitar esta información en Español, sírvase llamar al 206-477-8100 (relevo 711) o envíe un mensaje de correo electrónico [AskLocalServices@kingcounty.gov](mailto:AskLocalServices@kingcounty.gov).**

## More information

- [kingcounty.gov/MyCommute](https://kingcounty.gov/MyCommute)
- **Website:** [kingcounty.gov/OldCascadeHighway](https://kingcounty.gov/OldCascadeHighway)
- **Twitter:** @KCRoads

**Broch Bender**, Communications  
206-263-1189 | [bbender@kingcounty.gov](mailto:bbender@kingcounty.gov)



# Road closure: June 22 - July 14

West Snoqualmie River Road SE (Patterson Creek Bridge)



**King County**

Local Services

Road Services Division

King County Road Services is planning to close West Snoqualmie River Road SE at the Patterson Creek Bridge, just west of SE 19th Way, June 22 - July 14.

The county will repair the 54-year-old span by rehabilitating the bridge piers that support the bridge deck where it connects with the roadway. Crews will also rebuild the roadway on both sides of the bridge to fix the dips in the road.

Please plan to use the detour route during the closure (see map on back). King County will work to minimize impacts on the community from this project and will reopen the road sooner if work is finished early.



**Get real-time information:**  
[kingcounty.gov/mycommute](https://kingcounty.gov/mycommute)

## Find King County Road Services at:

- ▶ [www.kingcounty.gov/roads](http://www.kingcounty.gov/roads)
- ▶ Twitter: @kcroads
- ▶ Facebook: kingcountylocalservices
- ▶ Instagram: @kingcountylocalservices

-----  
To request this document in another format or language, please call 206-263-1189 (Relay: 711)  
-----

## Contact:

Broch Bender, Communications  
[bbender@kingcounty.gov](mailto:bbender@kingcounty.gov) | 206-263-1189

**Para solicitar esta información en Español, sírvase llamar al 206-263-1189 (Relevo: 711) o envíe un mensaje de correo electrónico a [bbender@kingcounty.gov](mailto:bbender@kingcounty.gov).**

DocuSign Envelope ID: 695452DF-0DD8-4825-9B99-04FAC8569AC0



King County Road Services is planning to close West Snoqualmie River Road SE at the Patterson Creek Bridge, just west of SE 19th Way, June 22 - July 14. Please use the detour pictured above during this time.

## Road closure alert

West Snoqualmie River Road SE (Patterson Creek Bridge)

 **King County**  
Local Services  
**Road Services Division**  
**Office of Communications**  
KSC-LS-0815  
201 S. Jackson St. Seattle, WA 98104

PRSR STD  
US POSTAGE  
**PAID**  
Seattle, WA  
Permit No. 6966

## Redmond Ridge Drive NE & NE Alder Crest Drive Roundabout Project

Construction expected spring 2023 through fall 2023



King County is building a roundabout to improve safety at the intersection of Redmond Ridge Drive NE and NE Alder Crest Drive. Work will start in May or June and end this fall.

The project also includes new sidewalks, signed crosswalks and mobility curb ramps.

### What to expect during construction

- Single lane closures for up to four months.
- Occasional full road closures at the intersection. Detour provided.
- Local access will be maintained at all times.

Learn more on the project website:

[kingcounty.gov/RedmondRidgeDriveNE](https://kingcounty.gov/RedmondRidgeDriveNE)



**Contact:** Broch Bender, Communications | [bbender@kingcounty.gov](mailto:bbender@kingcounty.gov) | 206-263-1189

DocuSign Envelope ID: 695452DF-0DD8-4825-9B99-04FAC8569AC0



Above: An image of what the new roundabout will look like.

- ▶ Twitter: @kcroads
- ▶ Sign up for road alerts: [kingcounty.gov/roadalert](https://kingcounty.gov/roadalert)

To request this document in another format or language, please call 206-263-1189 (Relay 711)

Para solicitar esta información en Español, sírvase llamar al 206-263-1189 (Relevo) o en mensaje de correo electrónico a [bbender@kingcounty.gov](mailto:bbender@kingcounty.gov)

**Redmond Ridge Drive NE & NE Alder Crest Drive  
Roundabout Project**  
Construction expected spring 2023 through fall 2023  
[kingcounty.gov/RedmondRidgeDriveNE](https://kingcounty.gov/RedmondRidgeDriveNE)



**King County**

Local Services

**Road Services Division**

**Office of Communications**

KSC-LS-0815

201 S. Jackson St.

Seattle, WA 98104

PRSR STD  
US POSTAGE  
**PAID**  
Seattle, WA  
Permit No. 6966

Spring 2023

## NE Woodinville-Duvall Road at NE 172nd Street Culvert Replacement Project

Two-month project starts with 30-day road closure

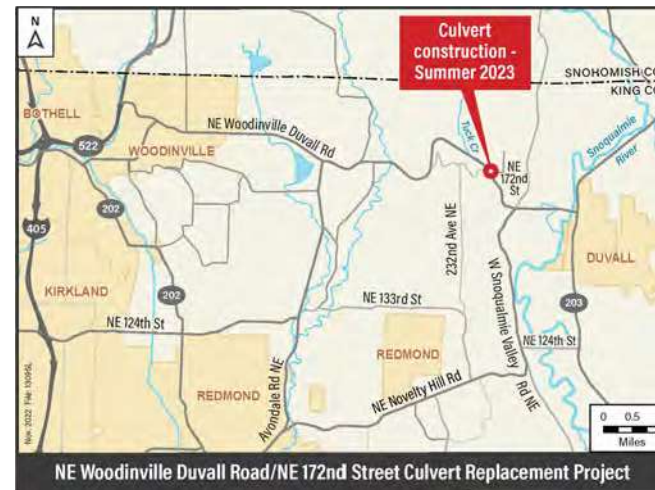


King County will close both directions of NE Woodinville-Duvall Road next to NE 172nd Street for 30 days in late June and July. We will remove fish passage barriers and install a large, wide culvert under the road. A posted traffic detour will be in place, plan up to 45 minutes of extra travel time through the area. The entire project will last through August.

- **CLOSED in late June/July 2023 for 30 days:**  
Both directions of NE Woodinville-Duvall Road near NE 172nd Street to install the culvert underneath the road.
- **No traffic allowed through work zone:**  
The road will have an open construction pit. All traffic, including emergency response, pedestrians and bicycles, will be detoured. Visit project website for detour map.
- Exact closure dates will be posted online at **kingcounty.gov/MyCommute** and at the project location two weeks in advance.
- Local access on NE Woodinville-Duvall Rd and NE 172nd St. will be maintained.

Project website and detour map:

**kingcounty.gov/WDRoadCulvert**



**Contact:** Broch Bender, Communications | [bbender@kingcounty.gov](mailto:bbender@kingcounty.gov) | 206-263-1189

DocuSign Envelope ID: 695452DF-0DD8-4825-9B99-04FAC8569AC0



The culvert (above) that carries Tuck Creek under the road is a fish passage barrier. We will remove it this summer.

**[kingcounty.gov/WDRoadCulvert](http://kingcounty.gov/WDRoadCulvert)**

- ▶ Twitter: @kcroads
- ▶ Sign up for road alerts: [kingcounty.gov/roadalert](http://kingcounty.gov/roadalert)

---

To request this document in another format or language, please call 206-263-1189 (Relay 711)

Para solicitar esta información en Español, sírvase llamar al 206-263-1189 (Relevo) o en mensaje de correo electrónico a [bbender@kingcounty.gov](mailto:bbender@kingcounty.gov)

## NE Woodinville-Duvall Road at NE 172nd Street Culvert Replacement Project

Two-month project starts with 30-day road closure



**King County**

Local Services

**Road Services Division**

**Office of Communications**

KSC-LS-0815

201 S. Jackson St.

Seattle, WA 98104

PRSR STD  
US POSTAGE  
**PAID**  
Seattle, WA  
Permit No. 6966