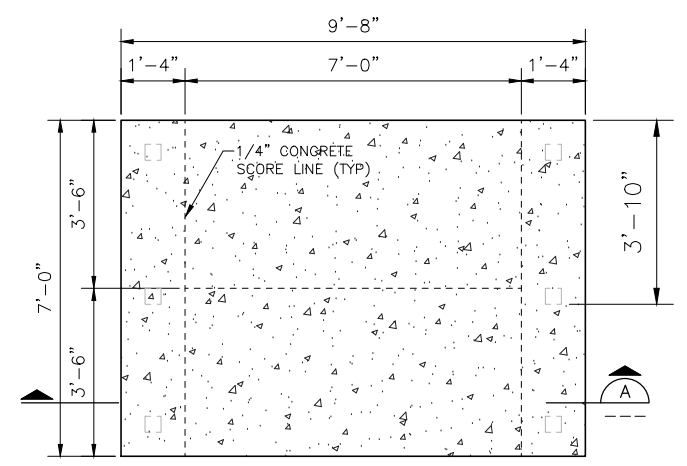
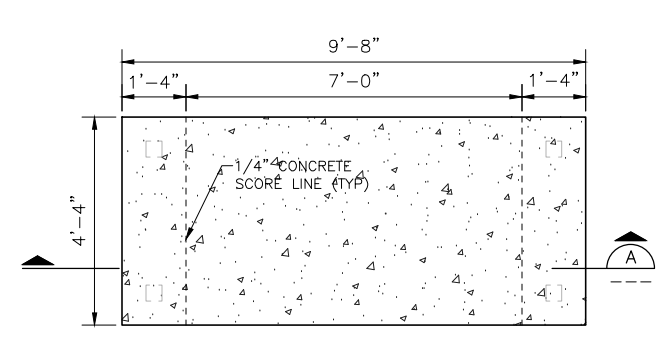


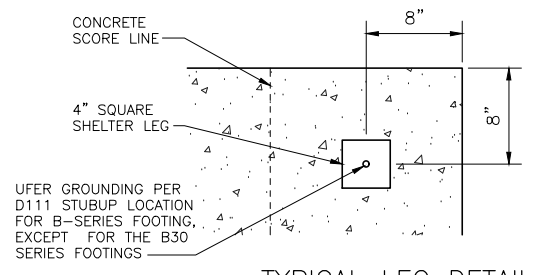
I:\DOT\kingcounty\dot\transit\CCAD\_Folders\Projects\passenger\_facilities\standard\_details\2021-2022\standard\_details\103.dwg | Layout: D103  
 PLOTTED: May 19, 2022 9:07:49pm By: dbernet  
 XREFS: KCMTD-BORDER.dwg IMAGES



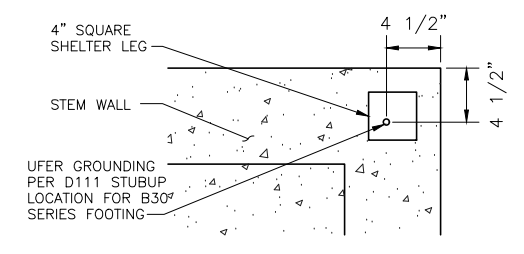
**B11 FOOTING DETAIL**  
SCALE: NONE



**B21 FOOTING DETAIL**  
SCALE: NONE

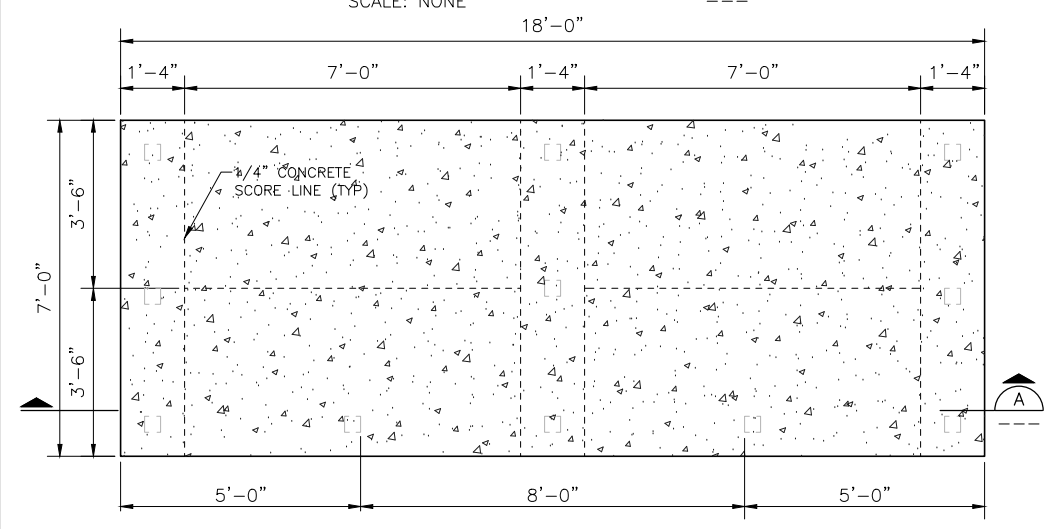


**TYPICAL LEG DETAIL**  
@ CORNER FOR B-SERIES FOOTING  
(EXCEPT B30 SERIES)

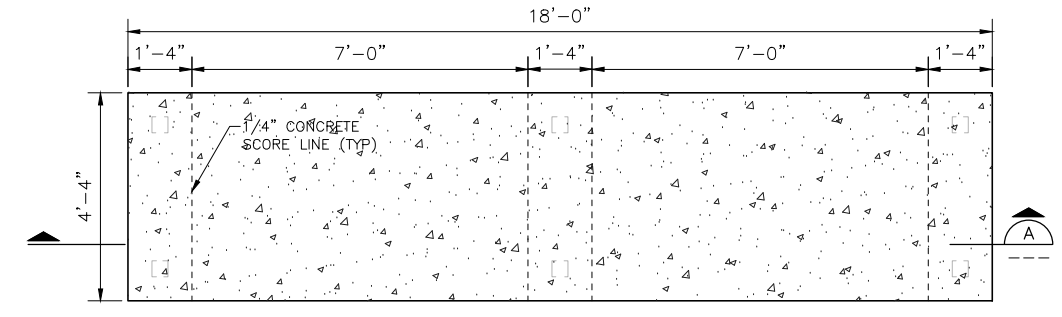


**TYPICAL LEG DETAIL**  
@ CORNER FOR B30  
SERIES FOOTING

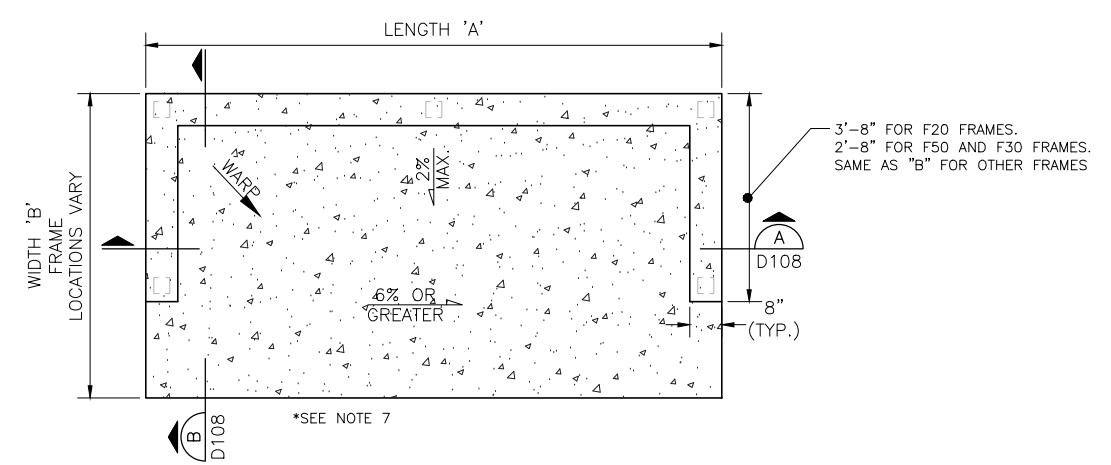
**TYPICAL LEG DETAILS FOR B-SERIES FOOTINGS**  
SCALE: NONE



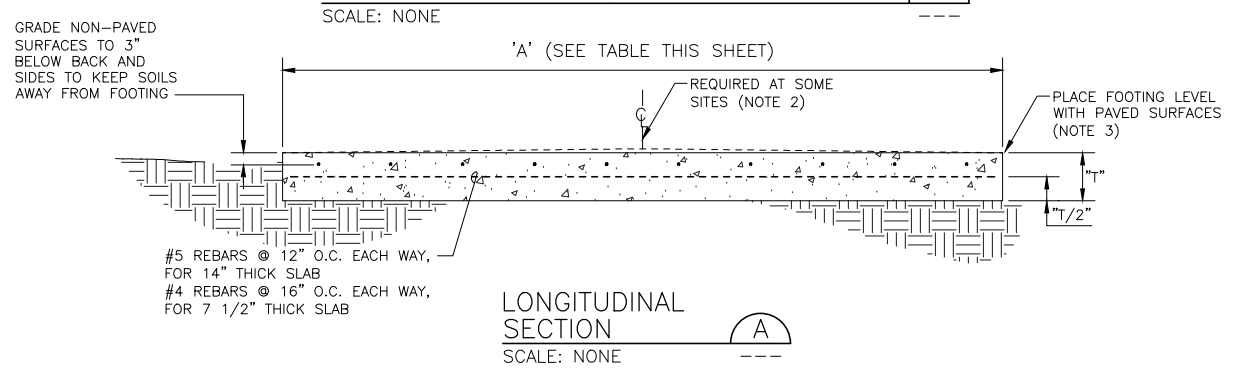
**B12 FOOTING DETAIL**  
SCALE: NONE



**B22 FOOTING DETAIL**  
SCALE: NONE



**B30 SERIES FOOTING DETAIL**  
SCALE: NONE



**LONGITUDINAL SECTION**  
SCALE: NONE

FOOTING DIMENSIONS				
FOOTING TYPE	SHELTER FRAME TYPE	LENGTH 'A'	WIDTH 'B'	SLAB THICKNESS 'T'
B11	PER PLAN	9'-8"	7'-0"	7 1/2"
B12	PER PLAN	18'-0"	7'-0"	7 1/2"
B13	PER PLAN	12'-8"	9'-8"	7 1/2"
B21	PER PLAN	9'-8"	4'-4"	14"
B22	PER PLAN	18'-0"	4'-4"	14"
B31	F11	9'-0"	6'-4"	7 1/2"
B31	F21	9'-0"	4'-4"	14"
B31	F31 OR F51	9'-0"	4'-4"	14"
B32	F12	17'-4"	6'-4"	7 1/2"
B32	F13	12'-0"	9'-0"	7 1/2"
B32	F14	17'-4"	6'-4"	7 1/2"
B32	F22 OR F52	17'-4"	4'-4"	14"
B32	F32	17'-4"	4'-4"	14"

**GENERAL NOTES:**

- "1" INDICATES AREAS FOR FUTURE SHELTER LEGS. AVOID PLACING REINFORCEMENT IN THESE AREAS.
- FOR SITES WITH SLOPES LESS THAN 0.5% IN 'A' DIMENSION, INCREASE DIMENSION AT MIDDLE OF FOOTING BY 1" TO ASSURE PROPER DRAINAGE OF SURFACE WATER.
- JOINT PER DET 3/D101 TO ISOLATE EDGES FROM PAVEMENT, SIDEWALKS, OR OTHER STRUCTURES.
- WHEN USING B-32 FOOTING WITH DOUBLE FRAMES, USE A LONGER BEARING SHOE TO SUPPORT THE FRONT MIDDLE LEG (BY METRO).
- SEE DET D111 FOR CONDUIT AND GROUNDING WIRE.
- FOOTINGS SHALL BE PLACED TO ENSURE THE SHELTER IS A MINIMUM THREE FEET FROM FACE OF CURB TO THE VERTICAL STRUCTURE; WHICH INCLUDES THE CANTILEVER OVERHANG AND EDGE OF THE SHELTER IF PLACED REVERSE TO CURB.
- B30 SERIES FOR USE WITH STEM WALL IN AREAS WITH RUNNING GRADES OF 6% OR GREATER.

KCMT 2021-2022 STANDARD DETAILS				
No.	REVISION	BY	APPD	DATE



DESIGNED: K. CHANG YUEN	APPROVED: P. ENG
DRAWN: L. ANDERSON	PROJECT NO.:
CHECKED: K. CHANG YUEN	CONTRACT NO.:
CHECKED: C. ASQUITH	



METRO TRANSIT CAPITAL DIVISION  
TRANSIT PASSENGER FACILITIES - IMPROVEMENTS

STANDARD SHELTER  
FOOTING PLANS, SECTIONS  
AND DETAILS

DATE: 05/2022
DRAWING NO: D103
SHEET NO. OF 9 20