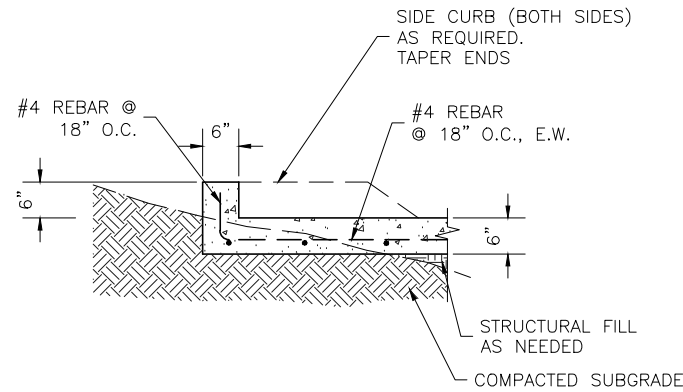


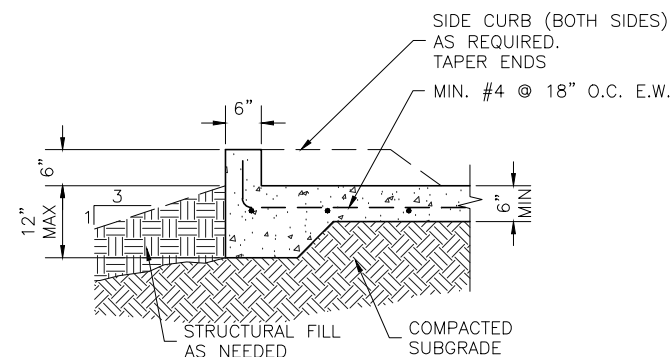
REINFORCING SLAB WITH FILL WALL

SECTION A
SCALE: NONE



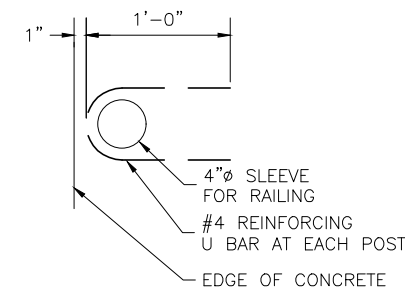
REINFORCED SLAB WITH CURB

SECTION D
SCALE: NONE

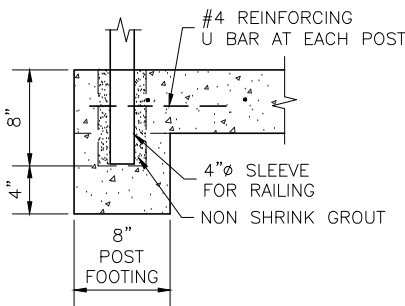


REINFORCED SLAB W/CURB AND THICKENED EDGE

SECTION B
SCALE: NONE



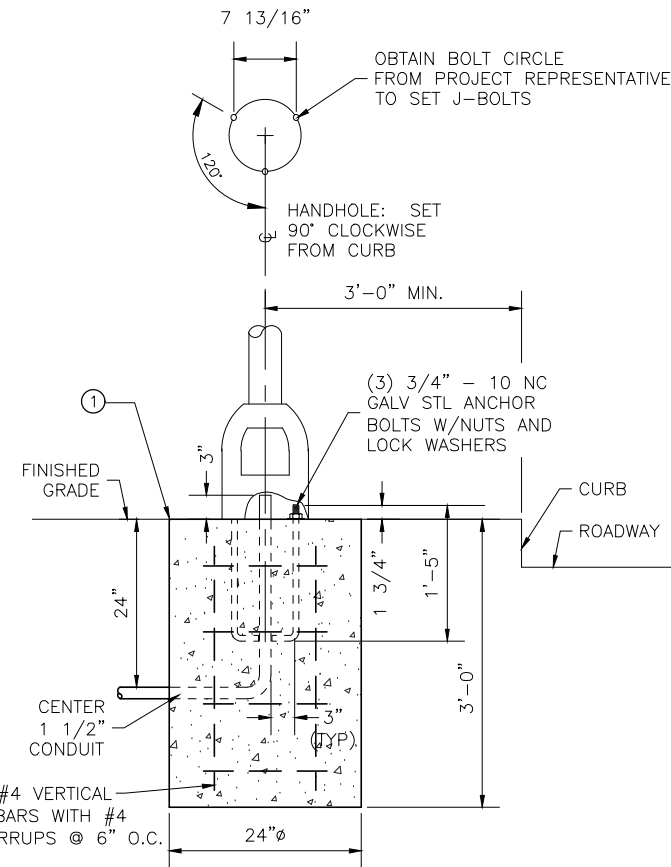
PLAN



SECTION

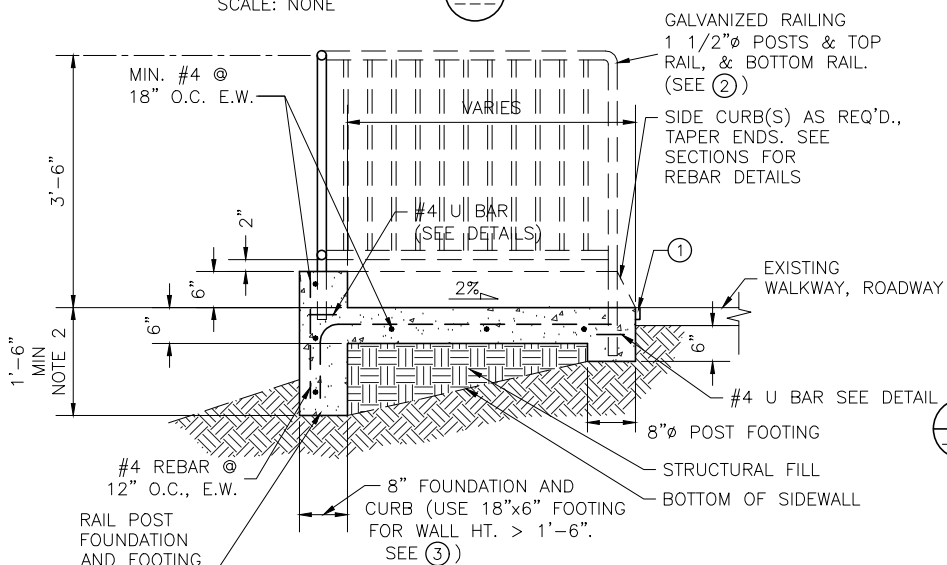
RAILING SLEEVE

DETAIL 1
SCALE: NONE



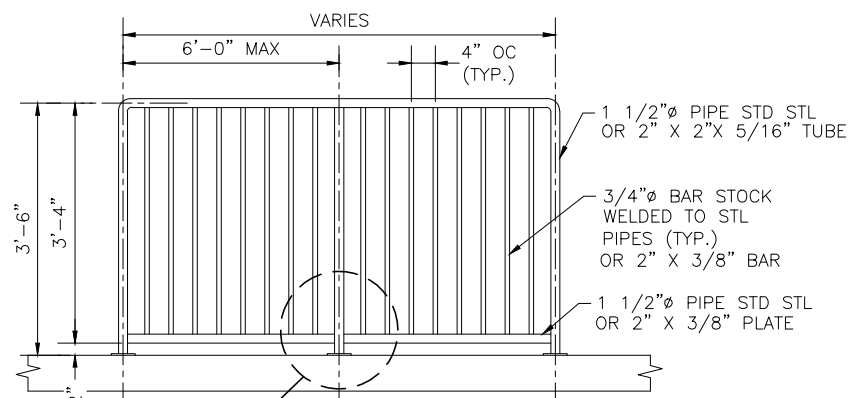
BUS ZONE LIGHT POLE FOUNDATION

DETAIL 4
SCALE: NONE



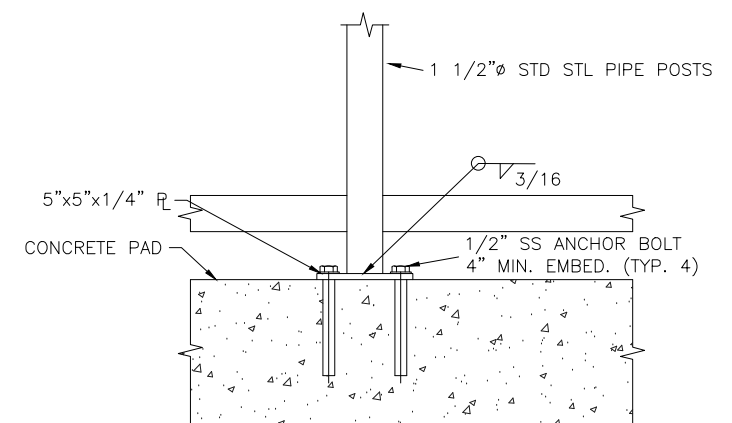
REINFORCED SLAB WITH PEDESTRIAN GUARDRAIL

SECTION C
SCALE: NONE



PEDESTRIAN GUARDRAIL

DETAIL 2
SCALE: NONE



ALTERNATE RAIL ATTACHMENT

DETAIL 3
SCALE: NONE

CONSTRUCTION NOTES

1. JOINT PER DET 3/D101 TO ISOLATE EDGES FROM PAVEMENT, SIDEWALKS, OR OTHER STRUCTURES.
2. INSTALL RAILING PER LOCAL JURISDICTION STANDARDS WHEN SLOPE AT BASE OF PAD IS STEEPER THAN 1:3 AND VERTICAL DROP WITHIN 3' FROM PAD IS MORE THAN 18". SAME APPLIES TO SIDES OF LANDING PAD.
3. USE SPREAD FOOTING FOR HEIGHT OF WALL GREATER THAN 18". SEE DET. 6/D105.

RAILING NOTES:

1. RAILING SHALL BE HOT-DIP GALVANIZED AFTER FABRICATION.
2. ALL POSTS SHALL BE PLUMB AND RAILS PARALLEL TO GRADE.
3. PIPE MATERIAL SHALL CONFORM TO ASTM A53.
4. ANCHOR BOLTS SHALL BE 1/2" Ø STAINLESS STEEL.
5. MAINTAIN RAIL @ 6" O.C. FROM EDGE OF CONCRETE.

KCMT 2021-2022 STANDARD DETAILS

No.	REVISION	BY	APPD	DATE



Know what's below.
Call before you dig.

DESIGNED: K. CHANG YUEN	APPROVED: P. ENG
DRAWN: L. ANDERSON	PROJECT NO.:
CHECKED: K. CHANG YUEN	CONTRACT NO.:
CHECKED: C. ASQUITH	



METRO TRANSIT CAPITAL DIVISION
TRANSIT PASSENGER FACILITIES - IMPROVEMENTS

DETAILS AND SECTIONS

DATE: 05/2022
DRAWING NO.:
D107
SHEET NO. OF 14 20

I:\DOT\kingcounty\dot\transit\CCCAD_Folders\Projects\passenger_facilities\standard_details\2021-2022\standard_details\107.dwg | Layout: D107
 PLOTTED: May 19, 2022 9:03:35pm By: gbernett
 XREFS: KCMTD-BORDER.dwg IMAGES: