



Seattle – Delridge – White Center – Burien



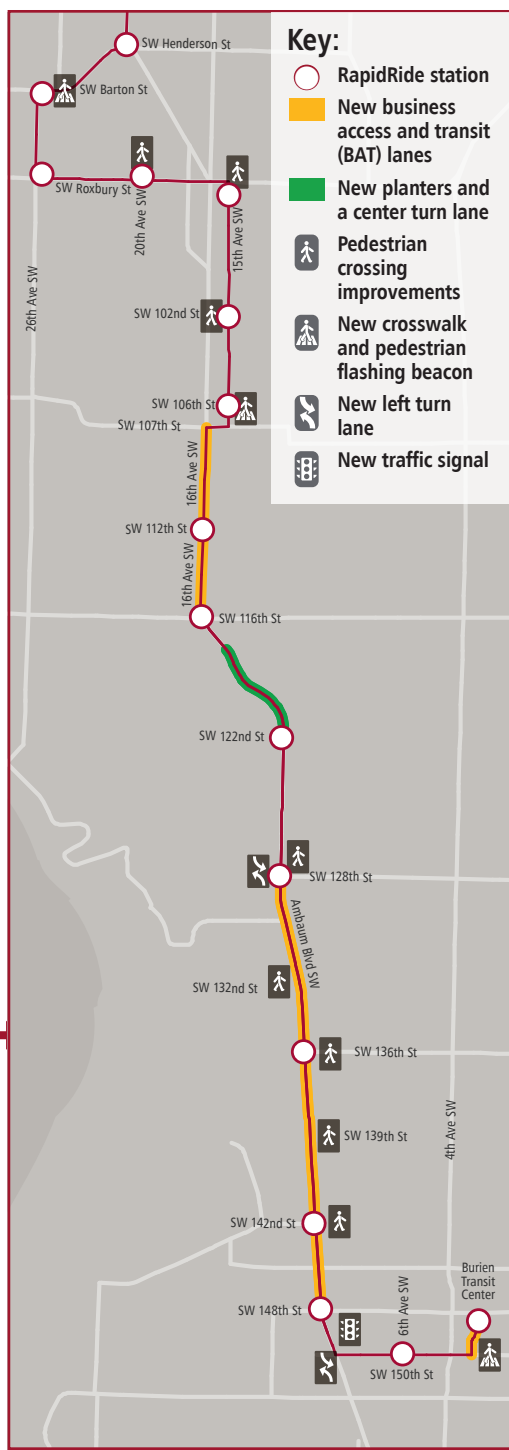
Service has begun for RapidRide H Line

King County Metro, in partnership with the Seattle Department of Transportation and the City of Burien, has upgraded Metro Bus Route 120—one of our 10 busiest routes—to RapidRide H Line.

While service has begun for RapidRide H Line, minimal weather dependent construction activities are expected to continue until Winter 2023.

What to expect during construction

- ▶ Typical construction hours are weekdays, 7 a.m. to 3:30 p.m., with occasional weekend and night work
- ▶ Temporary parking restrictions
- ▶ Periodic lane and driveway closures
- ▶ Flaggers to direct traffic around work areas
- ▶ Detours for people walking, biking, and rolling
- ▶ Temporary bus detours and bus stop relocations for Route 120
- ▶ Construction staging and parking impacts near the construction site
- ▶ Some sidewalk, intersection, and lane closures
- ▶ Typical impacts, such as noise, dust and debris, and truck activity



Stay Informed

Visit our website to stay up to date with remaining construction activity and to sign up for email construction updates: <https://kingcounty.gov/en/dept/metro/travel-options/bus/rapidride/h-line>

Starting in March 2023, RapidRide H Line, connecting Burien and White Center to Downtown Seattle through the Delridge neighborhood, will improve travel times, reliability, and connections to other buses and Sound Transit's Link light rail.

Enhanced stations

RapidRide bus stations provide riders with more amenities and a frequent and reliable way to travel and board the bus. Upgrades will include:

- ▶ Stations located approximately one-third of a mile apart to speed up travel times
- ▶ New shelters, ORCA card readers, lighting, real-time travel information, additional seating, and all-door boarding
- ▶ Stations easily accessed from local businesses and community gathering spaces

Increased accessibility and safety

RapidRide upgrades will make it easier and safer to walk and roll onto the bus. Improvements include:

- ▶ New pedestrian crossing signals and crosswalks
- ▶ New sidewalks, sidewalk repairs and ADA-compliant ramps

Improved speed and reliability

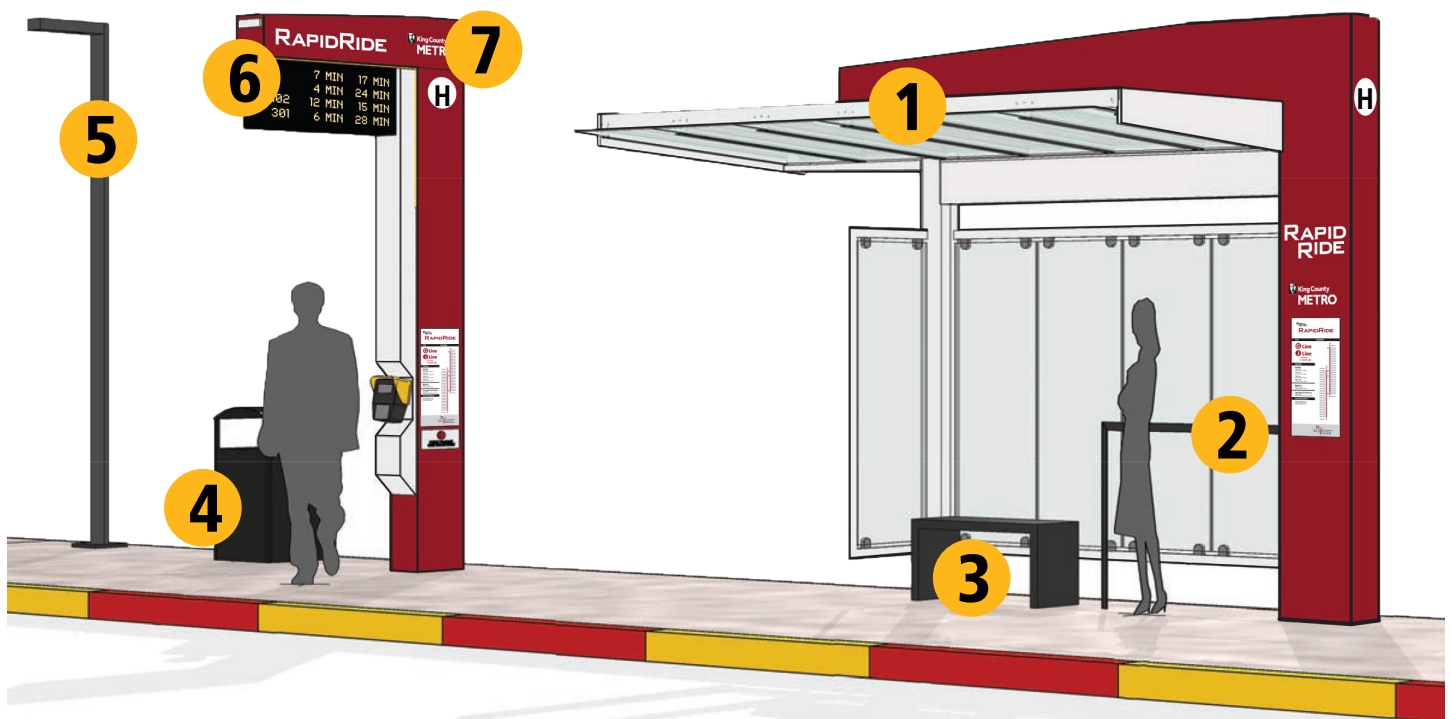
Riders can expect a decrease in travel time with RapidRide upgrades. Additional service improvements include:

- ▶ More frequent buses—every 15 minutes all day, every day and at least every 10 minutes during peak travel times
- ▶ More service will be added at night and on weekends

- ▶ Business access and transit (BAT) lanes designated for buses as well as vehicles entering and exiting businesses
- ▶ Priority bus signals
- ▶ Station specific improvements

RapidRide station conceptual design

- 1 Shelter
- 2 Leaning rail
- 3 Bench
- 4 Litter receptacle
- 5 Pedestrian light pole
- 6 On-demand lighting via push button
- 7 Tech pylon



Subject to change.

RapidRide H Line FAQs

What is RapidRide H Line?

RapidRide H Line, previously known as Route 120, is one of our 10 busiest routes. It provides connections from neighborhoods in Burien, White Center, Delridge, and downtown Seattle along Third Avenue. RapidRide H Line also provides needed connections to other bus routes and Link light rail.

How is RapidRide H Line different from Route 120?

RapidRide H Line buses operate more reliably, and riders will have access to more peak commute trips operating in the reverse direction and more trips operating at night on weekends. Bus stops have been upgraded with new shelters, lighting, and real-time arrival information to improve your experience. Sidewalks, street crossings, and signals have also been improved around stations for pedestrians, bikes, and those with limited mobility. Additionally, new business access and transit (BAT) lanes have been added to improve travel times for transit and provide better access to businesses for drivers.

When can I ride H Line buses?

Service has already begun for RapidRide H Line! We are happy to offer more trips throughout the day, at night, and on weekends. Listed below are the service frequency times.

- ▶ Peak direction during rush hour: Every seven minute
- ▶ Midday: Every 10 minutes
- ▶ Evenings (until 11 p.m.): Every 15 minutes
- ▶ Late nights: Every 30–60 minutes
- ▶ Weekends: Every 15 minutes 7 a.m. to 9 p.m.; nights every 20–30 minutes

What station amenities are included at RapidRide H Line stations?

- ▶ A 12-ft bus shelter canopy
- ▶ Real-time arrival information
- ▶ All-door boarding
- ▶ Benches
- ▶ Pedestrian-level lighting
- ▶ Signature signposts and route information maps
- ▶ Next Generation TSP (ngTSP)

Did the project make any non-motorized improvements?

As part of the RapidRide H Line project, several pedestrian safety improvements were completed, including wider sidewalks with landscaped separation from traffic along portions of Ambaum Boulevard Southwest, a new sidewalk on Southwest 136th Street from Eighth Avenue Southwest to Ambaum Boulevard Southwest, two new signalized crossings on Southwest 150th Street, and installation of a signalized crossing on 16th Avenue Southwest near Southwest 114th Street. The types of signalized crossings installed include a Rectangular Rapid Flashing Beacon (RRFB) and High-intensity Activated crossWalk (HAWK) beacon to maximize the safety of those walking, biking, and rolling.

When is construction expected to be completed?

While service has begun for RapidRide H Line, minimal weather dependent construction activities are expected to continue until Winter 2023.

How can I stay engaged with the project?

Get project updates and announcements about events and milestones on our [project website](#) or contact us using the information below.

RapidRide Community Engagement | Email: rapidride@kingcounty.gov | Project hotline: [206-257-3079](tel:206-257-3079)

Stay Informed

Visit our website to stay up to date with remaining construction activity and to sign up for email construction updates: <https://kingcounty.gov/en/dept/metro/travel-options/bus/rapidride/h-line>

RapidRide H Line FAQs—Burien

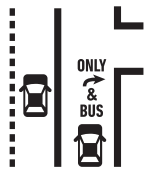
What does the red striping mean?

The red striping on Ambaum Boulevard denotes Business Access and Transit (BAT) lanes which allow buses to travel more efficiently through the corridor. This minimizes delays and increases transit speed and reliability while maintaining access to local businesses and residents. For transit riders, a designated bus lane, or BAT lane, allows buses to move more freely, leading to greater opportunity for on-time arrivals. Similarly, for drivers, BAT lanes enhance the capacity of general-purpose lanes by removing buses from general traffic. Finally, access to driveways is improved through added visibility and opportunities to turn into driveways.



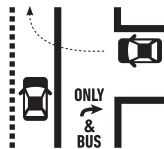
Bus Access Only

BAT lanes are for bus travel only during designated times (either 24 hours or during peak hours). Check surrounding signage. Accessing businesses and making right turns are permitted from a BAT lane.



Don't Travel in the BAT Lane

Do not travel in the BAT lane during restricted times. If necessary, travel is limited to one city block and should be used only to access a business or make a right turn.



Turn into the Nearest Through Traffic Lane

When leaving a business, be sure to turn into the nearest through traffic lane and not into the BAT lane.



Don't Park in the BAT Lane

BAT lanes are usually curb lanes but should not be used for parking during the designated BAT lane hours. Check surrounding signage for allowable times to park (if at all).



BAT Lanes Make Turning Right Easier

Drivers can make right turns from BAT lanes. BAT lanes make turning right (into a business or residence and onto connecting streets) easier by removing obstructions.

Stay Informed

Visit our website to stay up to date with remaining construction activity and to sign up for email construction updates: <https://kingcounty.gov/en/dept/metro/travel-options/bus/rapidride/h-line>

RapidRide Community Engagement | Email: rapidride@kingcounty.gov | Project hotline: 206-257-3079

RapidRide H Line FAQs—Burien CONTINUED

When can I use the right lane?

While BAT lanes are for transit only, other drivers may use them long enough to turn right at the next intersection. Signage is posted where right turns are allowed.

Only buses may travel in the BAT lanes, but drivers may use them to access businesses' driveways.

How will I know if I am travelling on a BAT lane?

Posted signs and pavement markings indicate where Bus Only or BAT lanes begin. Drivers should merge into general purpose lanes or make a right turn at the next intersection. Drivers may use Bus Only or BAT lanes to enter driveways and alleys throughout the corridor.

Why did we do this project?

Public transit is an important part of how we will meet the diverse needs and priorities of our rapidly growing region. Our current demand for transit and future needs identified in our cities' growth plans require access to expanded public transportation that is fast and reliable.

RapidRide H Line buses operate more reliably, and riders will have access to more peak commute trips operating in the reverse direction and more trips operating at night on weekends. It provides connections from neighborhoods in Burien, White Center, Delridge, and downtown. RapidRide H Line will also provide needed connections to other bus service and Link light rail.

Won't my commute time increase?

Riders will experience a decrease in travel time with the RapidRide upgrades, including more frequent buses — operating weekdays every 10 minutes most of the day (view the timetable on the H line webpage).

King County Metro conducted a traffic analysis in 2018 before the pandemic that travel times would only be marginally affected since the lanes on Ambaum were under utilized. This traffic information was presented to the City of Burien City Council and approved prior to the project proceeding. As our region grows, public transit is a key part of the solution to moving people from their homes to jobs and other destinations. Transit helps maximize the use of the region's existing infrastructure by moving more people in less space than by personal vehicles.

Who paid for the project?

The RapidRide H Line project is funded by the City of Burien, City of Seattle, and King County.

What improvements did Burien get (sidewalks, improved crossings, etc)?

The following improvements are being added along the future RapidRide H Line route in Burien:

- ▶ New pedestrian crossing signals and crosswalks
- ▶ New sidewalks, sidewalk repairs and ADA-compliant ramps
- ▶ Increased accessibility and safety features
- ▶ RapidRide upgrades will make it easier and safer to walk and roll onto the bus.

Operational characteristics of the several new HAWK signals included on the project.

HAWK (High-Intensity Activated crossWalk) signals — also referred to as Rapid Flashing Beacons — are pedestrian-activated traffic signals designed to increase safety at mid-block crosswalks.

To improve pedestrian safety, the project team installed Rapid Flashing Beacons at several pedestrian crossings along the future RapidRide H Line route. Rapid Flashing Beacons increase pedestrian safety by raising awareness for motorists.

These signals improve safety by providing a clear indication to drivers that they must stop when a pedestrian is crossing the street. This reduces the likelihood of pedestrian-vehicle collisions, particularly at mid-block crosswalks where pedestrians may not have the protection of traffic signals at intersections. Rapid Flashing Beacons also improve safety by reducing the likelihood of pedestrian dart-outs, which occur when pedestrians attempt to cross the street without using a crosswalk or crossing at an intersection. By providing a dedicated signal for pedestrians, these signals make it easier for pedestrians to cross the street safely and with confidence.