



# RapidRide I Line



## Notice of upcoming construction

Please be advised that we will be performing the following work in your neighborhood; as we aim to be good neighbors, we are committed to minimizing disruptions and sincerely appreciate your patience throughout this project.

**Upcoming site work:** Installation of RapidRide I line Bus Station

**Location:** Auburn Way N and 22nd St NE, Auburn

### Standard working hour window:

7:00AM – 5:00PM, Monday–Friday

*This time is inclusive of quiet prep time, mobilization, set up, cleanup and storage. Weekend and night work may occur. Advanced notice will be provided.*

### \*Anticipated impacts:

- Right lane closure of northbound Auburn Way N
- East sidewalk closure from S 22<sup>nd</sup> St NE to 21<sup>st</sup> St NE on Auburn Way N

\*Note: As weather conditions may impact our timeline, please stay connected by visiting our project page or reaching out to our team for the latest information.

**Project Background:** King County Metro will upgrade Route 160, which currently runs between Renton, Kent and Auburn – to future RapidRide I Line. RapidRide is part of a larger, system-wide approach to improve transit access in south King County, and I Line service is planned to begin in 2027.

## Find your King County Commute

Construction doesn't have to slow you down. King County Metro offers regular, reduced and free fares to ensure everyone can take transit. Find the right ORCA card and commute for you.

[kingcounty.gov/metro/FareEducation](https://kingcounty.gov/metro/FareEducation)

**Are you a business seeking to provide your employees with great benefits?** To find the right business program for you, email us at [employer.services@kingcounty.gov](mailto:employer.services@kingcounty.gov) or visit [kingcounty.gov/MetroBusiness](https://kingcounty.gov/MetroBusiness).



## Project and contact information



253-550-7628



[kingcounty.gov/rapidride/i](https://kingcounty.gov/rapidride/i)



[rapidride@kingcounty.gov](mailto:rapidride@kingcounty.gov)



Translations and interpretations available.

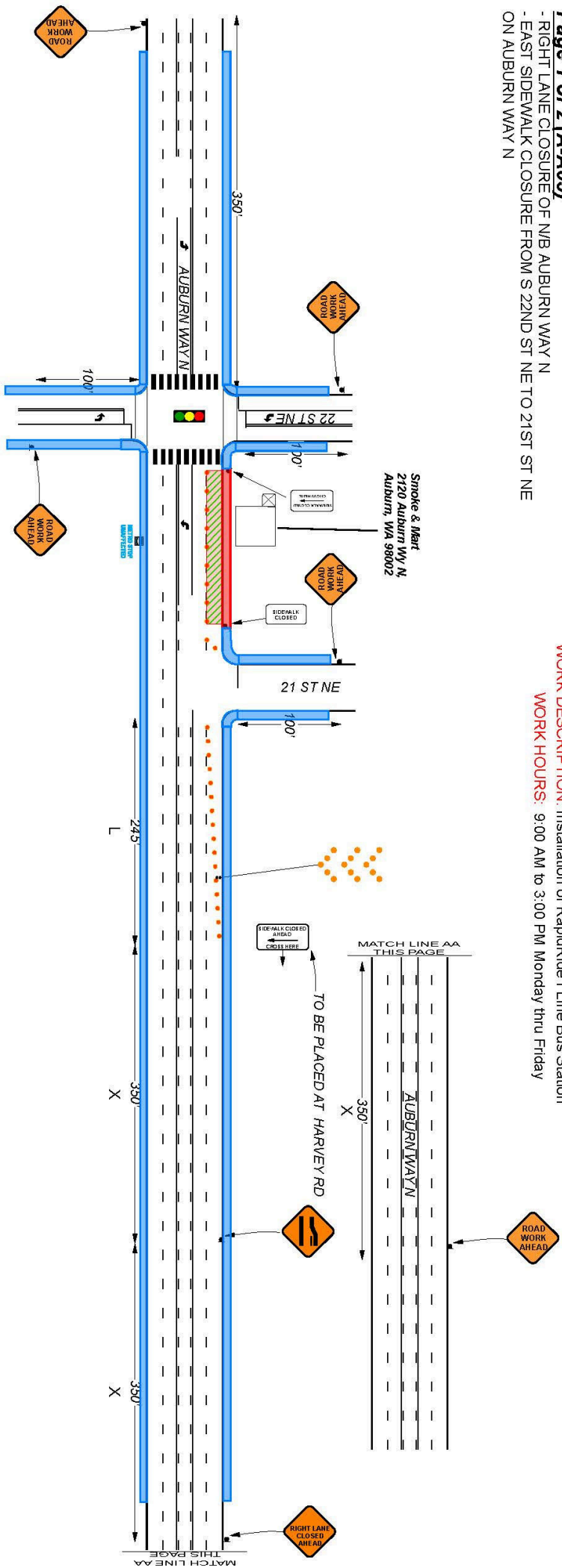
**COA P1.05 TCP - Auburn Way N & 22nd St NE -**

**Page 1 of 2 (A-A05)**

- RIGHT LANE CLOSURE OF N/B AUBURN WAY N  
 - EAST SIDEWALK CLOSURE FROM S 22ND ST NE TO 21ST ST NE  
 ON AUBURN WAY N

**WORK DESCRIPTION:** Installation of RapidRide | Line Bus Station

**WORK HOURS:** 9:00 AM to 3:00 PM Monday thru Friday



	SIDEWALK CLOSED
	SIDEWALK OPEN
	SIGN STAND
	TYPE I BARRICADE
	FLAGGER
	FLASHING ARROW BOARD
	WORK AREA / CLOSURE

DRAWN BY:

BRISKE ATSSA # 27160

POSTED SPEED LIMIT:



DIRECTION:



Pages will not be combined  
 (individual use performed)