

KING COUNTY'S AUTOMATED FINGERPRINT IDENTIFICATION SYSTEM

# AFIS



2025 ANNUAL REPORT

# FROM THE CHAIR



As the newly elected 2026 AFIS Advisory Committee Chair, it is my honor to share with you the King County Regional AFIS Program's 2025 Annual Report.

For 40 years, AFIS has been dedicated to identifying suspects by providing crime scene evidence in a cost-effective regionalized service. Additionally, AFIS facilitates arrest identification services to all police departments and jails throughout King County.

Because of every one of our members' dedication and high standards, the AFIS Program continues to complete and add services and that are crucial to solving crimes, advocating for victims, and holding offenders accountable in King County. This is possible due to the talented group of hard-working individuals that make up our AFIS team.

I would like to extend the Committee's sincere gratitude to the law enforcement agencies within King County that continue to take part in this regional program.

I encourage you to learn more about our program's goals and accomplishments by reviewing this report, which is also available online at [www.kingcounty.gov/afis](http://www.kingcounty.gov/afis).

Chief Kelly Park  
**Criminal Investigations Division**  
**King County Sheriff's Office**  
**King County AFIS Advisory Committee Chair**

## AFIS MISSION

The Regional AFIS Program promotes public safety and contributes to crime reduction by providing fingerprint identification services and technology to agencies throughout King County.



# AFIS ADVISORY COMMITTEE

## CHAIR

**Kelly Park** - Chief, King County Sheriff's Office

## VICE CHAIR

**Dan Yourkoski** - Chief, Normandy Park Police

## MEMBERS

**Andrew Bauck** - Executive Analyst, King County

**Geoffrey Detweiler** - Financial & Policy Analyst, Seattle

**Mike Harden** - Chief, Lake Forest Park

**Carrie Jones** - Budget Supervisor, Seattle

**Kyle Kolling** - Chief, Clyde Hill

**Michael Leahy** - AFIS Manager, King County

**Jeff Magnan** - Commander, Mercer Island Police

**Aleah Moe** - Forensic Manager, Bellevue Police

**Erica Newman** - Legislative Analyst, King County

**Nicole Powell** - Asst. Chief, Seattle Police

**Dawn Quaale** - Forensic Manager, Seattle Police



# PROGRAM OVERVIEW

King County's Automated Fingerprint Identification System (AFIS) is a countywide program that provides the staff and technology to support fingerprint identification services for all cities and unincorporated areas of King County. A regional approach allows for this enhanced service to be shared by all agencies.

## Objectives

- To quickly identify individuals, resolve identity related issues, and ensure criminal history records are accurately attributed and reported.
- To collect and identify crime scene related finger and palm prints to aid investigations and provide evidence in court.

## Technology

- The AFIS database stores nearly 3 million records for matching to incoming and unidentified prints.
- 59 Livescan devices deployed throughout the region capture prints, photos, and demographics. The data collected is transmitted electronically to the local, state, and federal identification systems.
- 250 Mobile ID devices deployed in the field assist in quickly identify people without the need to transport them to a secondary location.

## Benefits

- Provides expert staff and up-to-date technology at an overall lower expense than if agencies funded their own units.
- Creates a high quality, local database of fingerprint information against which all local agency prints can be searched.
- Leads to faster completion time for cases and arrest identifications.

## Services

- Collection of booking fingerprints, mug shots, and DNA
- Arrestee and applicant identification
- Criminal history reporting
- Crime scene and evidence processing
- Latent print examination
- Assistance with identity theft issues
- Identification of deceased and unknown individuals
- Technology management
- Customer support and training



# FINANCIAL OVERVIEW

The AFIS levy was first approved by voters in 1986 and it provides fingerprint technology and staffing to support identification and crime-solving efforts for all 39 cities and unincorporated areas within the county. Although law enforcement agencies are typically responsible for the costs associated with performing their own criminal identification functions, the investment in technology, staff, equipment, and other resources would be costly for any single jurisdiction to finance independently. A regional approach provides agencies throughout King County with core fingerprint services and technology, leaving local resources for other priorities.

The cost of the levy to King County residents has varied over the years in conjunction with new technology and initiatives. It has ranged from 2 cents per \$1000 of assessed value to 6.65 cents per \$1000. The most recent levy expired at the end of 2024, and the program was able to fund 2025 with existing fund balances.

In April of 2025, voters approved a levy renewal for the years 2026-2032 with a starting rate of 2.75 cents per \$1000 of assessed value. This equates to approximately \$24.34 in 2026 for a home with an assessed value of \$885,000. The rate adjusts with fluctuations in property values. If property values increase, the levy rate will decrease so that the program does not collect more than it needs. Conversely, if property values were to decrease the rate may increase but only within the statutory rate set forth in 84.55 RCW. The focus of this levy renewal was to maintain the status quo of the program by funding and refreshing existing technology, staffing, and services - including crime scene response teams and the processing laboratory approved by voters in the 2012 levy.

On average, this levy will collect \$27 million per year for seven years. Revenue has intentionally been set below planned expenditures in order to spend-down existing fund balances.



Revenue	
Property Taxes	\$49,332
Investment Interest	\$1,575,323
Other / Misc.	\$86
<b>Total</b>	<b>\$1,624,741</b>
Expenditures	
Salaries & Benefits	\$11,910,781
Supplies & Services	\$1,163,047
Intragovernmental Overhead	\$4,360,036
Capital Services/Equipmnt	\$11,037
City of Seattle**	\$3,860,419
Election Costs***	\$4,573,931
<b>Total</b>	<b>\$25,879,251</b>

\*With no active levy in 2025, revenue was limited to interest income and late-paid delinquent property taxes.

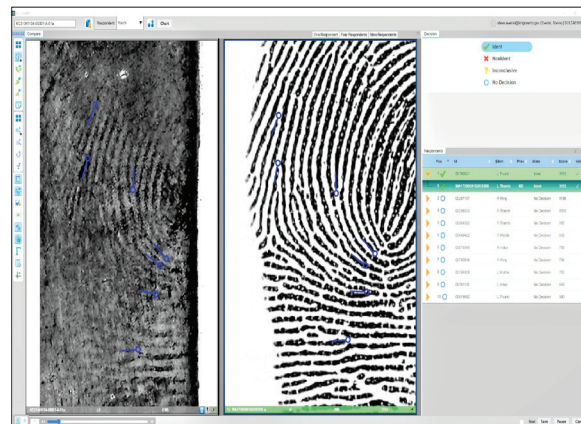
\*\*The AFIS levy funds an AFIS unit at Seattle Police to cover agency workload. The Seattle AFIS unit has its own budget which is approved by KC AFIS. This budget includes salary and benefits for 20 staff members as well as supplies, overhead, and training.

\*\*\* Election Costs will be reimbursed with funds from the renewed levy for years 2026-2032.

# AFIS TECHNOLOGY

## AFIS Database

The AFIS database contains nearly 3 million searchable records and is used to store and match prints collected from devices connected to our network. King County AFIS also maintains a connection to the fingerprint databases of Washington State Patrol, Western Identification Network, and the FBI. Prints not identified in our local database may be searched through these external databases. Prints recovered at crime scenes or on evidence can be searched through the database to determine who may have come into contact with a surface related to a criminal investigation. Unsolved crime scene prints are retained in the database and are continually searched against incoming records in hopes of providing resolution to older cases.



## Livescan

59 livescan terminals are deployed throughout the county in police, correctional, and government facilities. These terminals electronically capture and transmit fingerprint and palm print images directly to the King County AFIS system. The prints are searched through the database and compared to prints on file. Records are then transmitted, along with any criminal or applicant information, to the Washington State Patrol. This process can now be completed in a matter of minutes compared to the days or weeks it used to take when using ink and paper. Levy funds supply the livescan terminals at no cost to the agencies. In 2025, our fleet of livescan terminals collected over 51,000 sets of fingerprints.



## Mobile Identification

Mobile Identification devices are handheld fingerprint scanners that allow officers in the field to quickly identify individuals without the need to transport them to a secondary location. Field identification enables officers to make critical decisions on whether to detain subjects. The prints are automatically searched through the King County AFIS database as well as the Washington State Patrol database and FBI's Repository for Individuals of Special Concern (RISC), with results returned directly to the officer in the field. In keeping with privacy laws, prints taken on the Mobile ID are not saved on the device or in the databases through which they are searched. 4,870 Mobile ID searches were performed in 2025.



# PROGRAM SERVICES - IDENTIFICATION



Livescan terminals throughout the county transmit finger and palm print images to the AFIS database for identification 24 hours a day, seven days a week. Prints may be taken for criminal bookings, license applications, or background checks.

King County AFIS provides Identification Technicians to take prints at the King County Correctional Facility, Maeleng Regional Justice Center, and the King County Youth and Family Services Center. Our Technicians also respond to area hospitals to print patients who are unable to identify themselves. By ensuring that the highest quality prints are taken we increase our ability to identify people and to potentially match them to prints recovered at crime scenes.

Our Tenprint Examiners compare incoming submissions to those in our existing database, and any discrepancies between the information being used and the information in the database is reported to the agency submitting the prints. This process ensures that identity is quickly determined, and criminal history and warrants are properly associated with the correct individuals.

Information Specialists research arrest information for inclusion on state and federal rap sheets, ensuring that the courts, law enforcement, and licensing agencies have access to up-to-date criminal history information. These records are relied upon for criminal investigations, applicant backgrounding, and sentencing determinations.

Our identification section also assists with the identification of unknown deceased individuals and works with victims of identity theft to clear up criminal history that may have incorrectly become associated with them.

## 2025 Identification Section Stats

Criminal Bookings Performed by AFIS Staff: 18,447

Criminal Bookings Received: 38,266

Tenprint Records Searched: 51,161

Mobile ID Searches: 4,870

Unknown Patient Cases: 109

Deceased Examinations: 730

# PROGRAM SERVICES - FORENSICS



Prints left after a surface is touched are known as latent prints because they are not typically visible without some form of physical or chemical processing.

King County AFIS Processing Technicians and Latent Print Examiners respond to crime scenes throughout King County to recover latent prints from items that may have been touched during the commission of a crime.

We also have a state-of-the-art processing lab where agencies can send their evidence to be processed. In a lab setting, examiners are able to utilize a wider range of processing techniques and equipment to develop and preserve the latent prints on an item.

Once developed and preserved, latent prints are compared to the prints of known subjects. Depending on the circumstances of the case, they may be manually compared to specific individuals or searched through the entire AFIS database. They may also be searched through the databases of Washington State Patrol, Western Identification Network (AK, ID, MT, NV, OR, UT, WY), and FBI.

Unsolved latents can be stored in the AFIS computer and searched against all future known prints that are submitted. This potentially creates new leads in investigations that may have previously gone cold. In 2025, this resulted in new identifications in almost 300 cases.

Upon conclusion of any work, comprehensive case reports are prepared by our Latent Administrative Unit and supplied to investigators.

The Seattle Photography Unit provide specialized photo services for forensic and public relations purposes. The AFIS levy provides supplemental funding to this units in light of the volume of forensic photography work performed for the program.

## 2025 Forensic Section Stats

Evidence Items Processed: 9,757

Latent Cases Received: 3,399

Latent Identifications: 3,942

Crime Scene Responses: 1,386

DNA Samples Collected: 1,744

# PROGRAM SUPPORT

## Support, Training, and Community Involvement

The AFIS Program provides technical and helpdesk support for all users of the AFIS, livescan, and mobile ID services. Staff also coordinate fingerprint related training for officers, facilitate service-related communication among stakeholders, and organize participation in community events.

As a regional and levy-based program, it's vital that information about the program is shared with the public. This is done through school science programs, festivals, community events, career conferences, and National Night Out events. AFIS staff share information about their job functions and why fingerprint identification is so important.



## Management & Technology

AFIS program management oversees daily operations, acquisitions, budget, and the use and maintenance of fingerprint technology throughout the county. The management team ensures compliance with state and national security standards, administers program initiatives, and responds to issues in the ever-changing biometric and forensic disciplines.



## Looking Ahead:

In 2026, the AFIS Program will be completing its deployment of updated livescan devices throughout the county. We will also be evaluating advances in technology with a goal of increasing program efficiency and accuracy.

# NOTEABLE CASES 2025



Police responded to a shooting at the Northgate Transit Station where a single victim was shot and killed. The individual suspected of the shooting was an identical twin. The Seattle Police Department Latent Print Unit processed the vehicle used during the commission of the homicide and recovered numerous latent prints. The recovered prints were examined and searched through the King County AFIS database which resulted in identifications that eliminated the suspect's identical twin as the perpetrator in the case, something which DNA would be unable to do.

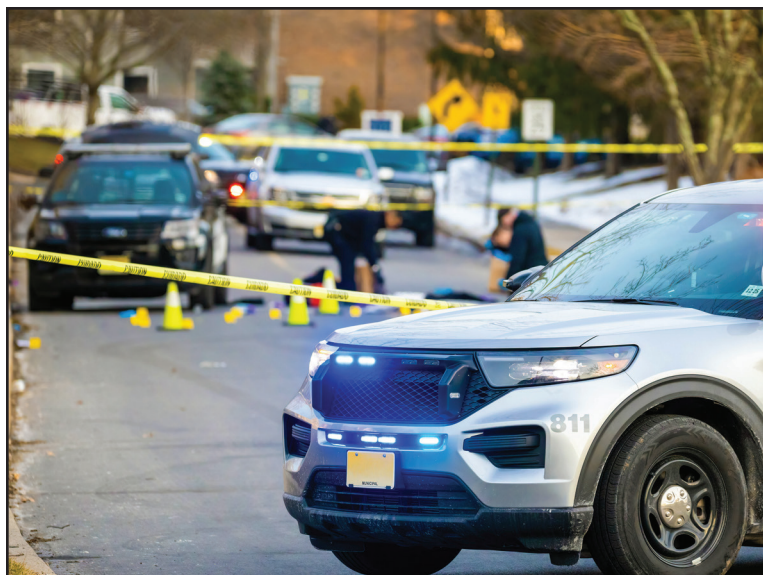


Police were called to a dumpster in Queen Anne where binders of child sexual assault material had been found. Police collected the materials and submitted them to the Seattle Latent Unit for processing. Prints developed on the binders were identified to a subject in the FBI AFIS database. Detectives were able to use the fingerprint identification to obtain an arrest warrant. Once in custody, the individual confessed to possessing the material and molesting approximately 50 children in another state dating back to when he was a teenager.

A King County man was booked into a south-county jail on a warrant for child molestation. Jail staff grew concerned when their system showed multiple records under the man's name and date of birth. King County Tenprint Examiners ran the man's prints and were able to determine that the man in custody was not the same individual for whom the arrest warrant was issued. The man was released and the arrest was removed from his record.



A juvenile was seen being grabbed by a subject attempting to pull her into his car. Her parents saw this happening from inside their home and rushed outside to help. The victim was rescued shortly before the vehicle sped away from the scene. The vehicle was later discovered abandoned and towed to the Bellevue PD garage where examiners processed for latent prints and DNA. Prints inside the vehicle were identified to a suspect.



Seattle was the scene of a series of kidnappings in which individuals would force victims into a stolen Chevy Suburban where they would be assaulted and robbed of their belongings. The Suburban was recovered and the Seattle Latent Unit processed the vehicle. Latent prints developed on the vehicle were searched through the KC AFIS database and a subject was identified, corroborating other evidence collected in the case. This fingerprint identification resulted in the Prosecutor filing charges.



Local professional athletes and celebrities were victims of burglaries and home invasions over the course of several weeks. In one instance, suspects crashed and abandoned a drone that they were using to surveil properties. King County Latent staff were able to recover prints from the drone and identify two individuals, leading to the filing of charges.



King County

KING COUNTY REGIONAL



IDENTIFICATION PROGRAM

# FINGERPRINT ACTIVITIES

Match each lettered fingerprint to the corresponding numbered image



a



b



c



d



e



f



g

1

2

3

4

5

6

7



Answers: a-7, b-6, c-5, d-3, e-1, f-4, g-2

WHAT FINGERPRINT PATTERNS DO YOU HAVE? RECORD YOUR PRINTS IN THE FINGERS BELOW AND COMPARE THEM TO THE EXAMPLES.

