



# **ANNEXATION REPORT**

A report on recent annexation related activity

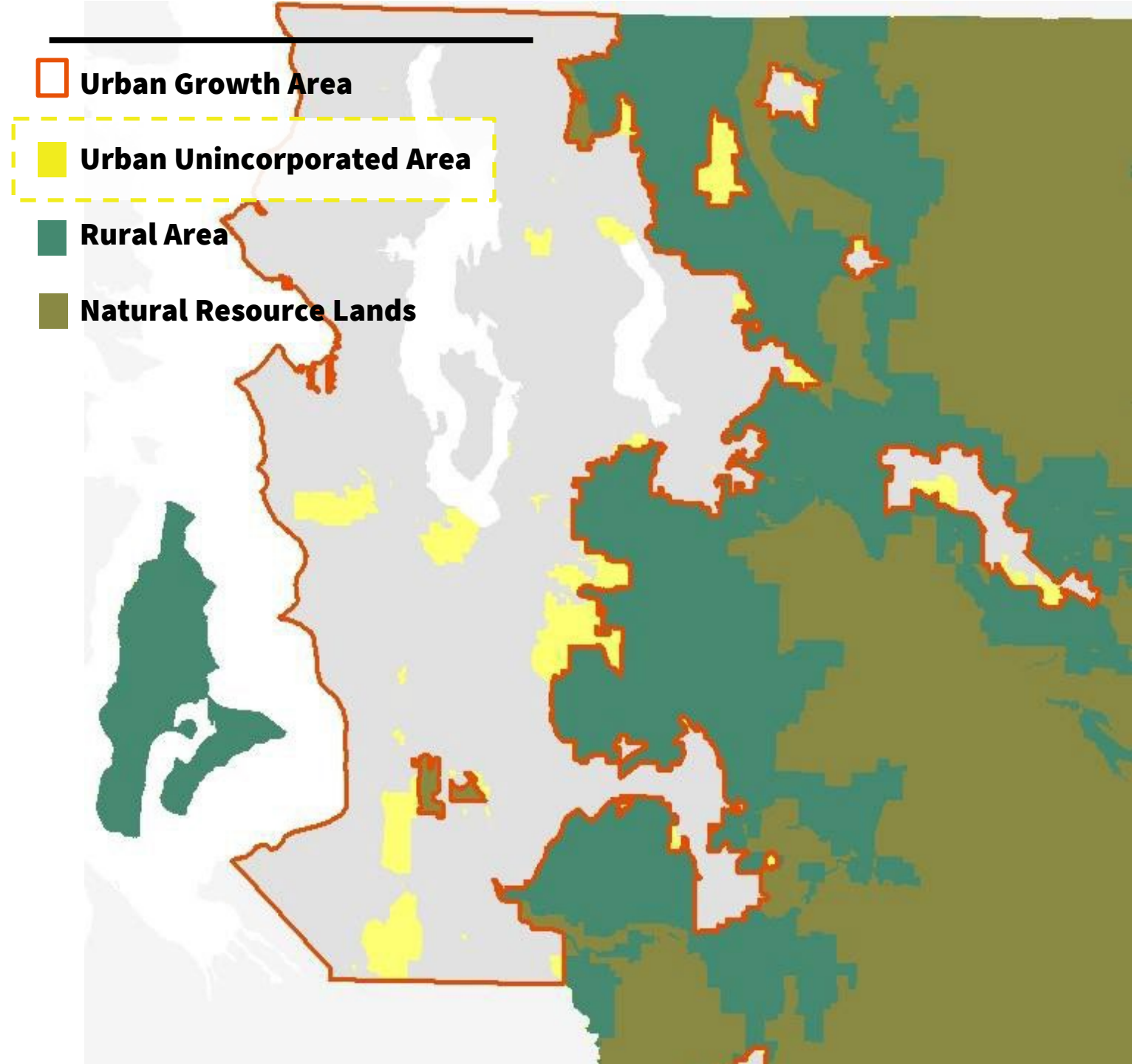
September 2025

In adopting the Washington State Growth Management Act (GMA), the Legislature recognized that counties are regional governments within their boundaries, and that **cities are the primary providers of urban governmental services within urban growth areas.**

# 100+

**Urban unincorporated islands in King County are eligible for annexation.**

- Countywide Planning Policies (CPPs) support and encourage the annexation of urban unincorporated areas by cities.
- These urban unincorporated areas are identified on the Potential Annexation Area (PAA) map, also found in the CPPs.



As part of its ongoing work, the Interjurisdictional team(IJT) organizes briefings for the GMPC on annexation-related activity. The last briefing was in 2024, which included updates on the following items:

- Recent annexations;
- Potential Annexation Areas (PAAs) map;
- Upcoming annexation plans/projects; and
- Joint city-county state legislative items related to annexation

And we are here today to give another update on these items.

# City Annexation Activity 2020-Present

File #	Lead Entity	Action	Annexation Method	Name	Board Action	# of Parcels	Total Acres
2418	C: Redmond	Annexation	Petition	NE 97 <sup>th</sup> Street	3/14/24	13	13.5
2416	C: Auburn	Annexation	Resolution	The Bridges	11/9/23	443	156
2404	C: Renton	Annexation	Petition	Graves	11/12/20	19	21.4
2402	C: Enumclaw	Annexation	Petition	Mt. Rainer Christian Ctr.	5/14/20	2	6.87
2401	C: Federal Way	Annexation	Petition	S. 320 <sup>th</sup> Street	5/14/20	7	21
2400	C: Enumclaw	Annexation	Petition	Mt. Rainer Christian Ctr.	2/13/20	2	8.7

Key: C=City

# Annexation Plans / Projects / Discussions

- Auburn
- Bellevue
- Enumclaw
- Federal Way
- Kent
- Maple Valley

# Sales Tax Credit

In its 2023 session, the Legislature reinstated the sales tax credit to incentivize annexation with the passage of [2SHB 1425 – Facilitating Municipal Annexations](#).

- **The tool is not a new tax.** State statutes authorize local governments to impose certain sales tax “credits” against the 6.5% state sales tax to generate revenue.
- **A city must begin imposing the authorized tax** before July 1, 2028.

# King County Potential Annexation Areas with Population of 2,000+ Residents\*

City	PAA Name	Population
Renton	Fairwood	23,500
Seattle	North Highline Area Y	18,600
Renton	West Hill	17,000
Federal Way	North Federal Way	13,500
Federal Way	Lakeland South (East Fed. Way)	8,600
Renton	East Renton	6,000
Redmond	English Hill	2,700

\*Source: [King County Unincorporated Area Annexation Area Databook, 2018](#)



# Future Activity

King County will continue to :

- **Partner with cities** to facilitate annexations, available to brief city staff/councils as needed;
- **Update the PAA Map** to reflect recent annexations
- **Annually brief the GMPC** on annexation activity
- **Brief City Councils** upon request

For More Information, please contact Karen Ann Meyering at [karen.meyering@kingcounty.gov](mailto:karen.meyering@kingcounty.gov) or (206)263-9697