

SUMMARY

FILE NO. 2419
ENTITY: COVINGTON WATER DISTRICT
ACTION: PETITION METHOD
TITLE: SCHNEIDER WATER ANNEXATION

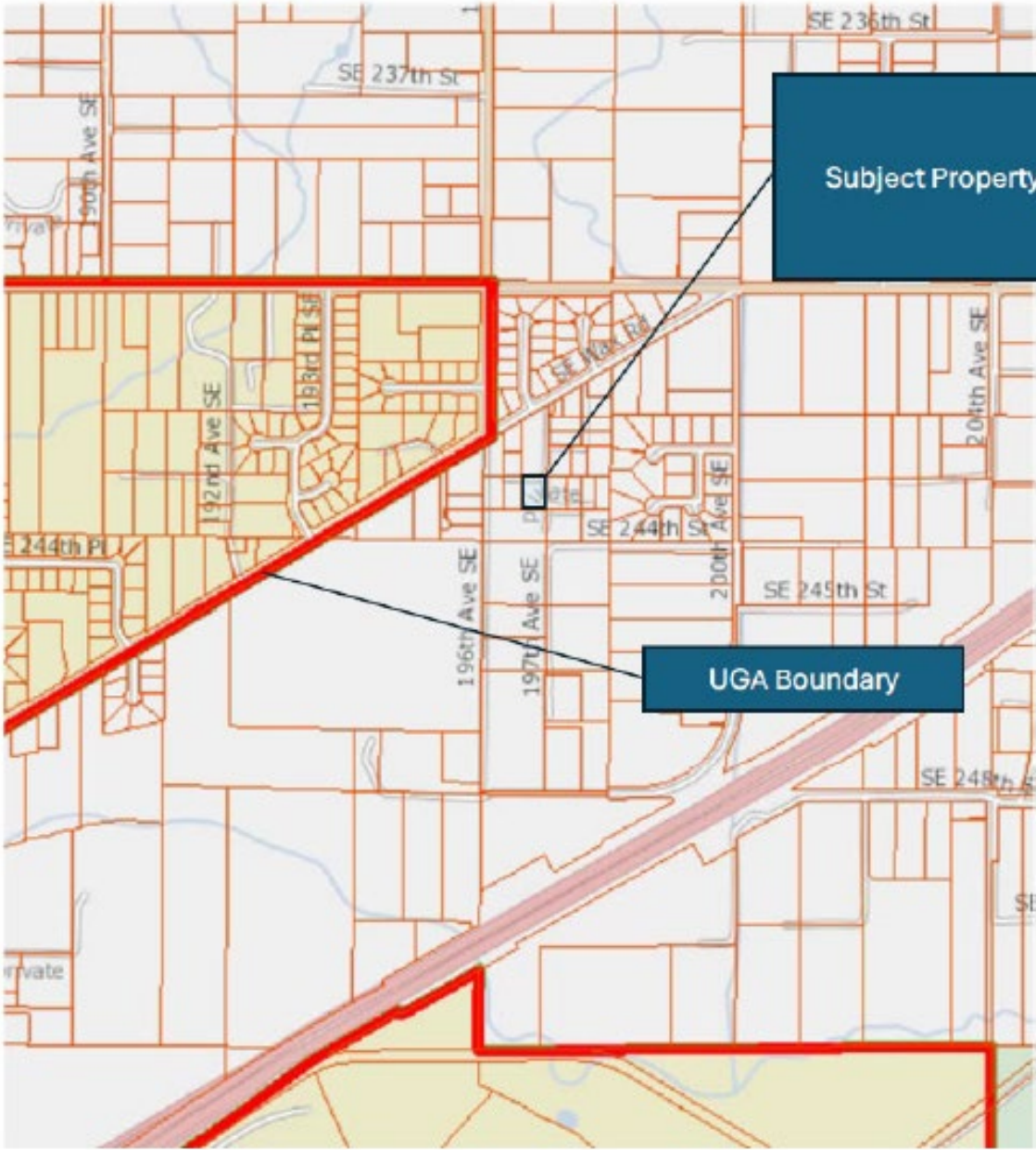
THOMAS GUIDE MAP NO. 717
DEEMED COMPLETE DATE: 4/17/24
DISTRIBUTED: 5/2/24
EXPIRATION 45 DAYS: 6/2/24
BOARD MEETING: 5/9/24

NOI Link: <https://cdn.kingcounty.gov/-/media/king-county/independent/governance-and-leadership/government-oversight/boundary-review-board/docs/nois/2419.pdf?rev=c41493e3a89047b792b0b822467d96aa&hash=E3DB53E339414543FD2BAC8409F07BA2>

Introduction	The proposed action would add territory to the Covington Water District for the purpose of water service.
Location	The proposed annexation area is located in the unincorporated area between the cities of Covington and Maple Valley. It is adjacent to the current boundary of the Covington Water District. Specifically, the proposed annexation area is located in the Northwest Quarter of Section 20, Township 22 North, Range 6 East, Willamette Meridian. It is located east of SE Wax Road and west of 197 th Avenue SE.
No. of Parcels:	1
Parcel Nos.	2022069098
Land Area	.49 acres
Existing Land Use	The area is currently zoned RA-5. An unfinished single-family home is currently under construction on the parcel.
Population	0
Assessed Valuation	\$222,000
District Comprehensive Plan/District Franchise	The annexation area is included in the Covington Water District's service area and current franchise. Water service for the annexation area is included in the Covington Water District's adopted comprehensive plan that was approved by King County Ordinance 18435 on December 13, 2016. That plan was also approved by the Washington State Department of Health on February 10, 2017, and also the by the Covington Water District via its Resolution 4230 on March 15, 2017.
Urban Growth Area (UGA)	The proposed annexation area is located in the rural area outside of the Urban Growth Area per the State Growth Management Act (GMA) and the King County Comprehensive Plan.
SEPA Declaration:	The owner of the parcel prepared a SEPA environmental checklist in September 2023, and the Covington Water District made a Determination of Nonsignificance in January 2024.

ENTITIES/AGENCIES NOTIFIED:

King County Councilmember:	Reagan Dunn, District 9
King County Departments	KCIT, King County Council, Department of Assessments, Department of Community and Human Services, Department of Executive Services, Department of Local Services, Department of Natural Resources and Parks, King County Elections, King County Executive's Office, King County Prosecuting Attorney's Office, King County Sheriff's Office, Public Health Seattle & King County
Cities:	Issaquah, Newcastle, Renton, Tukwila, SeaTac, Kent, Auburn, Black Diamond, Covington, Maple Valley, Algona
Fire Districts/Regional Fire Authorities:	King County Fire Protection District No. 10, King County Fire Protection District No. 20, King County Fire Protection District No. 24, King County Fire Protection District No. 25, King County Fire Protection District No. 37, King County Fire Protection District No. 40, King County Fire Protection District No. 43, King County Fire Protection District No. 47, Renton Regional Fire Authority, Puget Sound Regional Fire Authority, Valley Regional Fire Authority, Mountain View Fire and Rescue, Enumclaw Fire Department
Water Districts:	Coal Creek Utility District , King County Water District 90, Highline Water District, Lake Meridian Water District, Soos Creek Water and Sewer District, Lakehaven Water and Sewer District, Skyway Water and Sewer District, Cedar River Water and Sewer District
Sewer Districts:	Midway Sewer District, Valley View Sewer District
School Districts:	Issaquah School District, Tahoma School District, Renton School District, Kent School District, Federal Way School District, Auburn School District, Enumclaw School District, Tukwila School District, Highline School District
Hospital Districts:	Public Hospital District No. 1, Public Hospital District No. 4
Other:	Puget Sound Regional Council, Muckleshoot Indian Tribe, Puget Sound Energy, Washington State Department of Ecology, Sound Transit, Port of Seattle, King County Library Service



Subject Property

UGA Boundary

