

NO	DATE	DESCRIPTION
1	04/08/19	ADDED IMPERVIOUS SURFACE REMOVAL



THE UNDERGROUND ROUTING AND CONDITION OF BURIED UTILITIES HAS NOT BEEN VERIFIED OR CONFIRMED. FIELD LOCATE, VERIFY DEPTH OF, AND ADEQUATELY PROTECT ALL UTILITIES PRIOR TO THE START OF WORK.

PERMIT NO:  
APPROVED BY:  
DATE:

**PROJECT:  
RESTORATION  
PLAN**

**KING COUNTY CODE  
ENFORCEMENT  
CASE  
ENFR18-0234**

18417/18421 RENTON-MAPLE VALLEY HWY  
MAPLE VALLEY, WASHINGTON 98038

TAX PARCEL NO. 32306-9104  
32306-9098

PREPARED FOR:  
TRUCK PERFORMANCE NW, INC.  
TRAILERS NW, INC.  
PO BOX 1185  
MAPLE VALLEY, WASHINGTON 98038

SHEET TITLE:  
**IMPERVIOUS  
SURFACE  
REMOVAL SITE  
PLAN, NOTES, &  
DETAILS**

PROJECT NO: 18060  
DATE: 02/13/2019

SHEET NUMBER:  
**2/4**

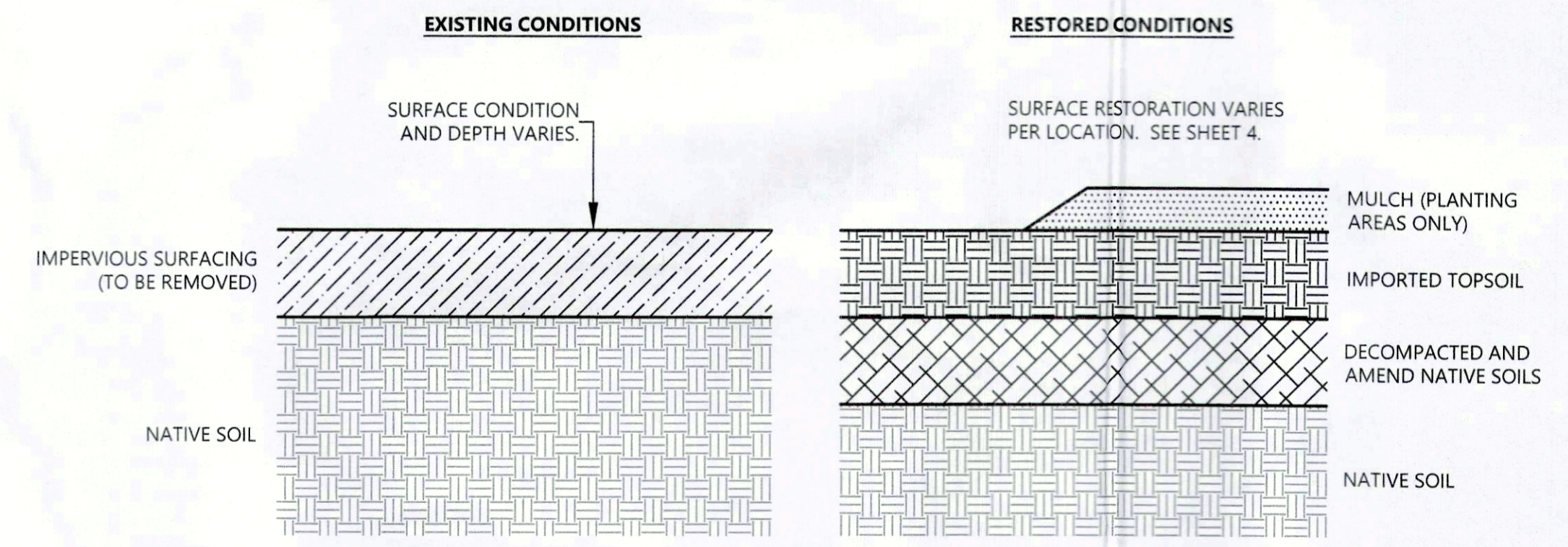


DATE OF PHOTO: 2002 PHOTO REFERENCE: KING COUNTY IMAP



DATE OF PHOTO: 2018 PHOTO REFERENCE: GOOGLE EARTH

**1 REFERENCE AERIAL PHOTOGRAPHS**  
2 NO SCALE



- IMPERVIOUS SURFACE REMOVAL NOTES:**
- PRIOR TO INSTALLING SURFACE RESTORATION:
- REMOVE IMPERVIOUS SURFACING FROM THE AREAS SHOWN ON THIS DRAWING. DISPOSE OF IMPERVIOUS SURFACING AT A LEGAL OFF-SITE LOCATION.
  - DECOMPACT AND AMEND SOILS PER THE FOLLOWING SPECIFICATIONS:
    - MECHANICALLY DECOMPACT NATIVE SOIL UNDERLYING IMPERVIOUS SURFACING TO A MINIMUM DEPTH OF 8 INCHES USING AN EXCAVATOR OR BACKHOE BUCKET WITH TEETH, A TOW-BEHIND MECHANICAL RIPPER, A ROTOR-TILLER, OR APPROVED EQUAL.
    - APPLY 4 INCHES OF ORGANIC COMPOST COMPRISING CEDAR GROVE COMPOSTING "COMPOST" (WWW.CEDAR-GROVE.COM; 1-877-764-5748) OR APPROVED EQUAL TO THE DECOMPACTED AREA.
    - UNIFORMLY TILL IN COMPOST TO ACHIEVE A UNIFORM MIXTURE OF EXISTING SOIL AND COMPOST WITHIN THE DECOMPACTED SOIL.
    - RAKE AND LIGHTLY COMPACT FINAL SURFACE TO PROVIDE A UNIFORM APPEARANCE AND CONSOLIDATE SOILS.
  - PLACE TOPSOIL OVER DECOMPACTED SOILS TO ACHIEVE A MINIMUM DEPTH OF 6 INCHES AFTER COMPACTION. TOPSOILS SHALL COMPRISE CEDAR GROVE COMPOSTING "3 WAY TOPSOIL" (WWW.CEDAR-GROVE.COM; 1-877-764-5748). RAKE, ROLL, AND LIGHTLY COMPACT FINAL SURFACE TO PROVIDE A UNIFORM APPEARANCE AND CONSOLIDATE SOIL. SHALL NOT OCCUR DURING FREEZING WEATHER, WHEN SOIL IS FROZEN OR EXCESSIVELY WET, OR WHEN SURFACE WATER OR FLOODING IS PRESENT.

**2 IMPERVIOUS SURFACE REMOVAL DETAIL**  
2 NO SCALE

**DRAWING NOTES:**

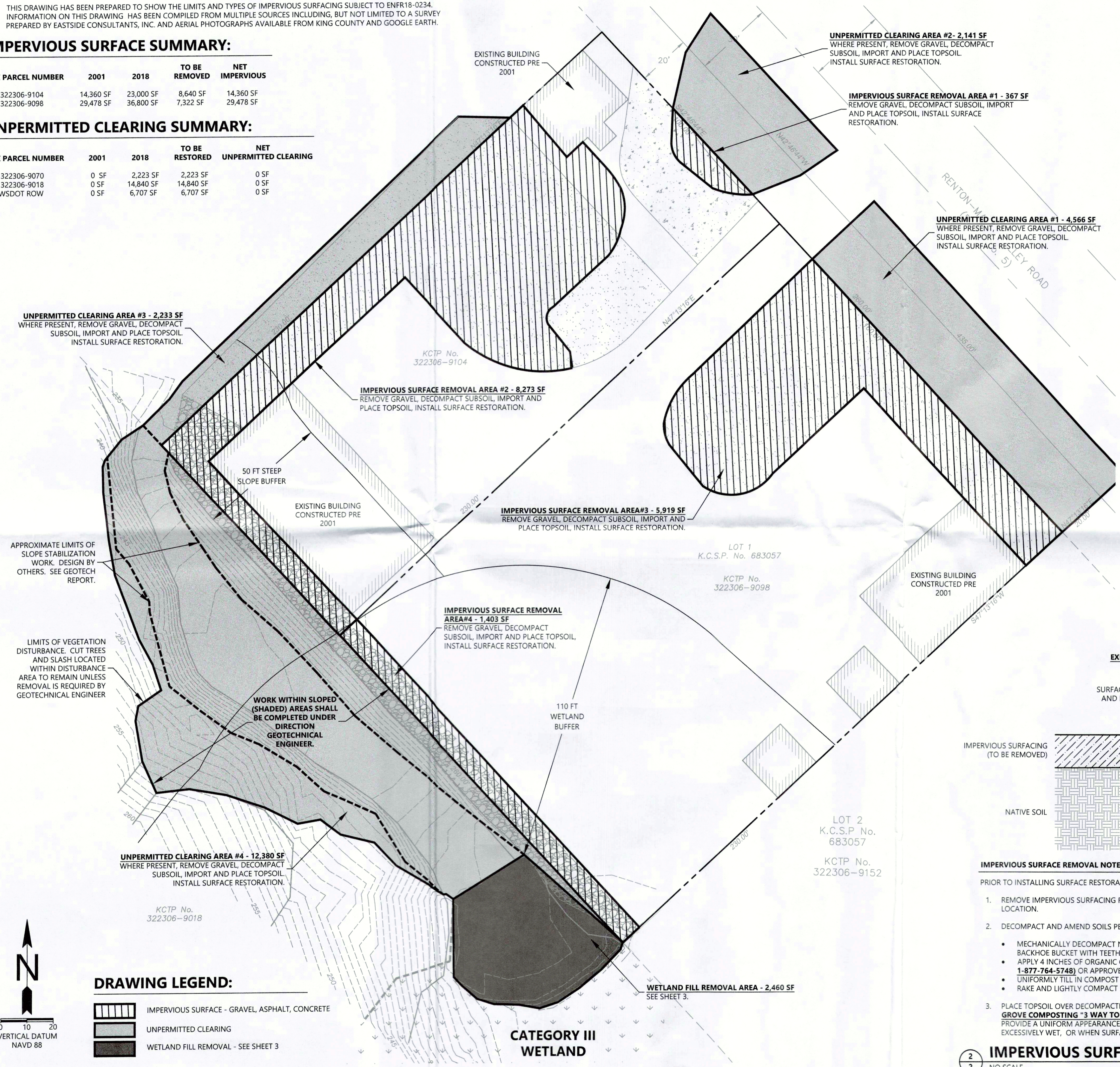
- THIS DRAWING HAS BEEN PREPARED TO SHOW THE LIMITS AND TYPES OF IMPERVIOUS SURFACING SUBJECT TO ENFR18-0234.
- INFORMATION ON THIS DRAWING HAS BEEN COMPILED FROM MULTIPLE SOURCES INCLUDING, BUT NOT LIMITED TO A SURVEY PREPARED BY EASTSIDE CONSULTANTS, INC. AND AERIAL PHOTOGRAPHS AVAILABLE FROM KING COUNTY AND GOOGLE EARTH.

**IMPERVIOUS SURFACE SUMMARY:**

TAX PARCEL NUMBER	2001	2018	TO BE REMOVED	NET IMPERVIOUS
322306-9104	14,360 SF	23,000 SF	8,640 SF	14,360 SF
322306-9098	29,478 SF	36,800 SF	7,322 SF	29,478 SF

**UNPERMITTED CLEARING SUMMARY:**

TAX PARCEL NUMBER	2001	2018	TO BE RESTORED	NET UNPERMITTED CLEARING
322306-9070	0 SF	2,223 SF	2,223 SF	0 SF
322306-9018	0 SF	14,840 SF	14,840 SF	0 SF
WSDOT ROW	0 SF	6,707 SF	6,707 SF	0 SF



**DRAWING LEGEND:**

- IMPERVIOUS SURFACE - GRAVEL, ASPHALT, CONCRETE
- UNPERMITTED CLEARING
- WETLAND FILL REMOVAL - SEE SHEET 3