

GUNSHY MANOR
PRELIMINARY PLAT
Safe School Walkways Analysis
JUNE 14, 2019

Prepared for

**The Estate of Barbara J. Nelson &
the WCN GST Non-Exempt Marital Trust #2**
Attn: William Nelson
16508 NE 79th St
Redmond, WA 98052

Submitted by

ESM Consulting Engineers, LLC
33400 8th Ave S, Ste 205
Federal Way, WA 98003

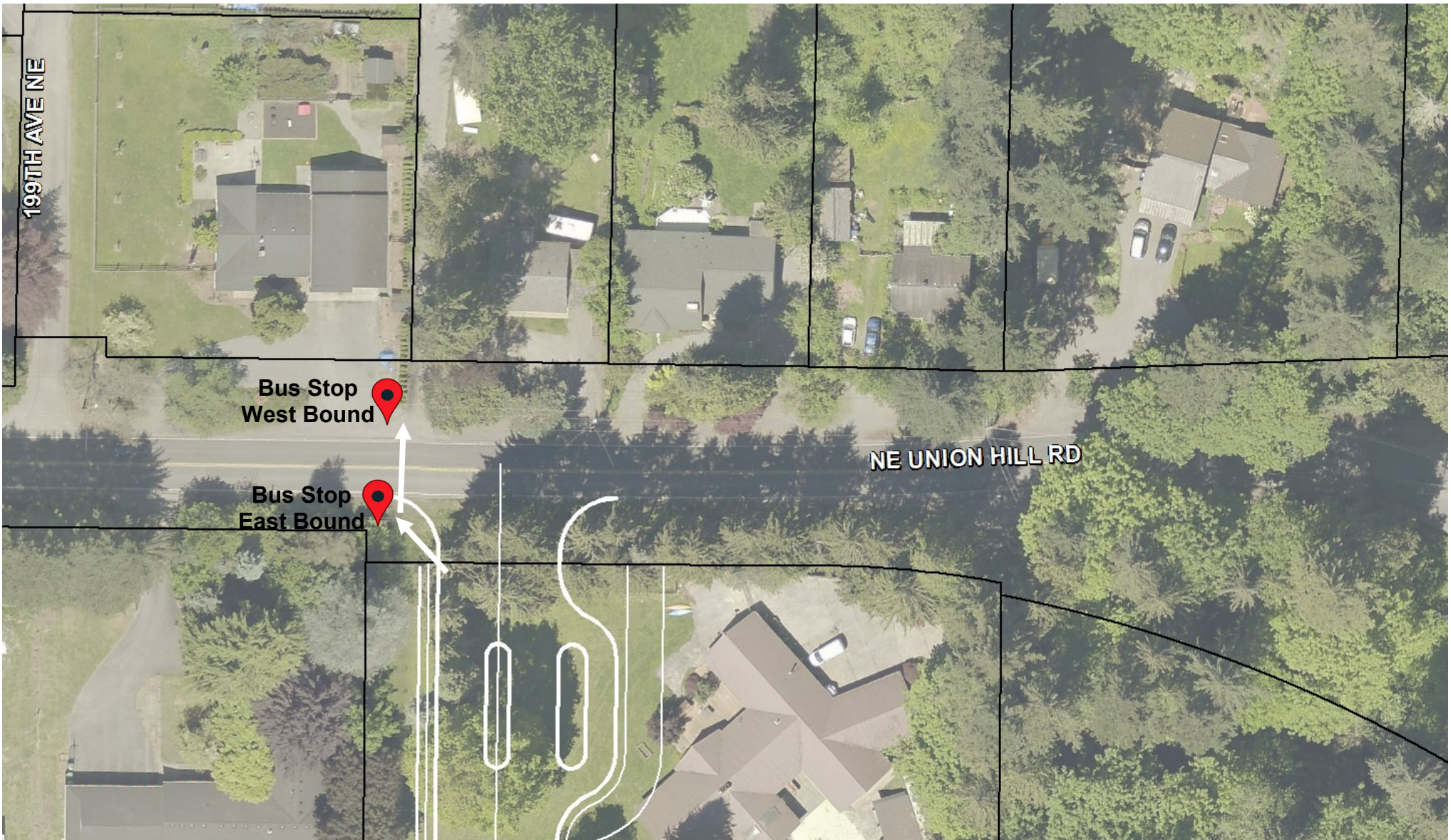
253.838.6113 tel
253.838.7104 fax



esmcivil.com

**Gunshy Manor
Safe School Walkways
Lake Washington School District**

Walking Route to Bus Stop



Gunshy Manor Safe School Walkways Lake Washington School District

Elementary Bus Stop

School/Transportation Information

[Simple Search](#) | [Advanced Search](#) |

Simple Search:

Grade = '01'

Home Address = '20005 NE UNION HILL RD 98053'

The information displayed below is subject to confirmation by the transportation or district office.

School/Transportation Information

Your school of residence is Dickinson Elementary

You attend Dickinson Elementary

You live 0.99 mi. from your school.

On the way to School

You Ride.

You have to walk this far: 0.08 mi.

You would be assigned to this bus stop: 19908 NE UNION HILL RD [S]

Where bus number 82 (Route 38ADIC - WHITE) arrives at 8:27 AM

On the way from School

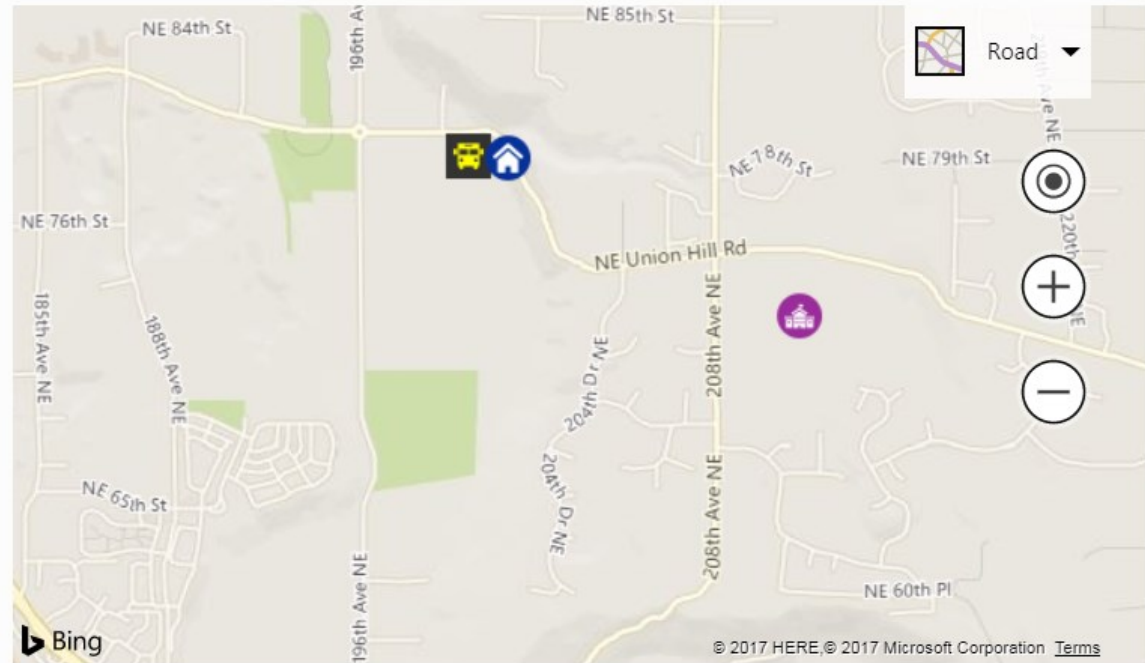
You Ride.

Where bus number 139 (Route 1PDIC - WHITE) arrives at 3:50 PM

You are assigned this bus stop: 19908 NE UNION HILL RD [S]

You have to walk this far: 0.08 mi.

[View Detailed Results](#)



Student Home



School



Bus Stop

Use of this application constitutes acceptance of [Microsoft Bing Map Terms of Service](#)

<http://busroutes.lwsd.org/elinkrp/Students/BasicTransBoundarySearch.aspx>

Gunshy Manor Safe School Walkways Lake Washington School District

Middle School Bus Stop

School/Transportation Information

[Simple Search](#) | [Advanced Search](#) |

Simple Search:

Grade = '07'

Home Address = '20005 NE UNION HILL RD 98053'

The information displayed below is subject to confirmation by the transportation or district office.

School/Transportation Information

Your school of residence is Evergreen Middle School

You attend Evergreen Middle School

You live 0.97 mi. from your school.

On the way to School

You Ride.

You have to walk this far: 0.08 mi.

You would be assigned to this bus stop: 19908 NE UNION HILL RD [S]

Where bus number 117 (Route 21AEMS - RT 21) arrives at 7:36 AM

On the way from School

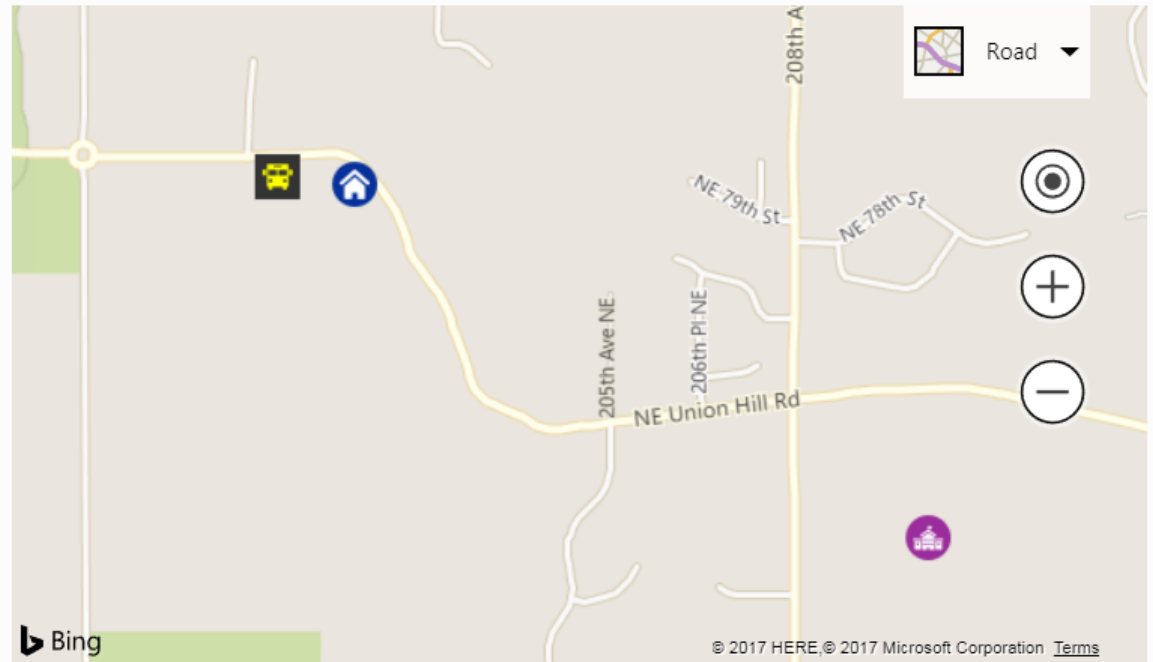
You Ride.

Where bus number 117 (Route 21PEMS - PARKING STALL #12 - RT 21) arrives at 2:43 PM

You are assigned this bus stop: 19908 NE UNION HILL RD [N]

You have to walk this far: 0.08 mi.

[View Detailed Results](#)



Student Home



School



Bus Stop

Use of this application constitutes acceptance of [Microsoft Bing Map Terms of Service](#)

Gunshy Manor Safe School Walkways Lake Washington School District

High School Bus Stop

School/Transportation Information

[Simple Search](#) | [Advanced Search](#) |

Simple Search:

Grade = '12'

Home Address = '20005 NE UNION HILL RD 98053'

The information displayed below is subject to confirmation by the transportation or district office.

School/Transportation Information

Your school of residence is Eastlake High School

You attend Eastlake High School

You live 6.27 mi. from your school.

On the way to School

You Ride.

You have to walk this far: 0.08 mi.

You would be assigned to this bus stop: 19908 NE UNION HILL RD [S]

Where bus number 146 (Route 6AEHS - RT 6) arrives at 6:10 AM

On the way from School

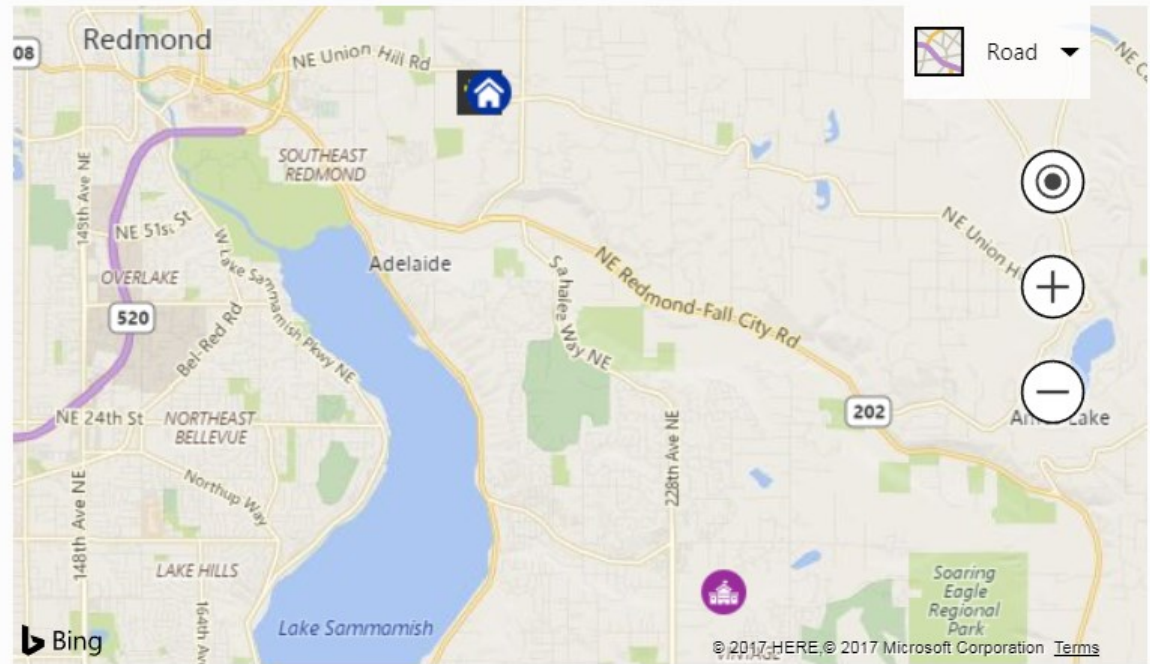
You Ride.

Where bus number 146 (Route 6PEHS - RT 6) arrives at 3:34 PM

You are assigned this bus stop: 19908 NE UNION HILL RD [S]

You have to walk this far: 0.08 mi.

[View Detailed Results](#)



Student Home



School



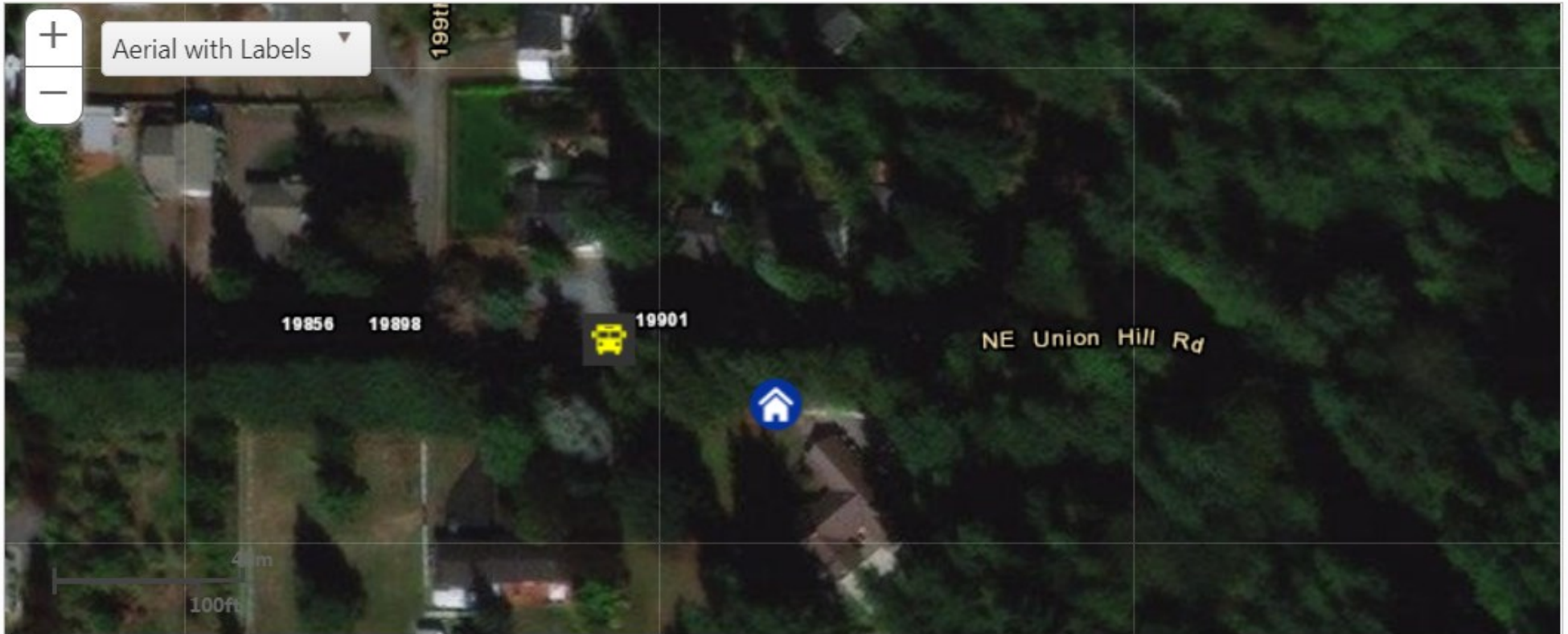
Bus Stop

Use of this application constitutes acceptance of [Microsoft Bing Map Terms of Service](#)

<http://busroutes.lwsd.org/elinkrp/Students/BasicTransBoundarySearch.aspx>

**Gunshy Manor
Safe School Walkways
Lake Washington School District**

Aerial Map from Transportation Webpage



-  Student Home
-  School
-  Bus Stop

Gunshy Manor Safe School Walkways Lake Washington School District

Walking Route to Bus Stop



File: \\esm8\enrg\ESM-JOB\1359\001\007\exhibits\EN-25.DWG
Plotted: 4/16/2019 10:30 AM



DRAWING: EN-25



CONSULTING ENGINEERS, LLC
33400 8th Ave S, Suite 205
Federal Way, WA 98003



FEDERAL WAY (253) 838-6113
EVERETT (425) 297-9800

www.esmcivil.com

Civil Engineering | Land Surveying | Project Management | Land Planning
Public Works | Landscape Architecture

JOB NO. 1359-001-007 | DATE: 08/01/2018
DRAWN: JH | SHEET 1 OF 1

NELSON ESTATES

GUNSHY MANOR
ENTRY EXHIBIT

Savanna Nagorski

From: Miles, Jeff <jmiles@lwsd.org>
Sent: Tuesday, April 16, 2019 10:56 AM
To: Savanna Nagorski
Subject: RE: Gunshy Manor Preliminary Plat, Safe School Walking Conditions

Savanna,

Thank you for reaching out and allowing the district input regarding bus stops for Gunshy Manor. The bus stop is currently at this location therefore the improvements will be a welcome addition and allow for the students from the new development a reasonable location to wait for the bus. The district has no concerns with your proposal.

Thanks again,
Jeff Miles
Transportation Manager
Lake Washington School District

From: Savanna Nagorski <Savanna.Nagorski@esmcivil.com>
Sent: Tuesday, April 16, 2019 10:32 AM
To: Miles, Jeff <jmiles@lwsd.org>
Subject: RE: Gunshy Manor Preliminary Plat, Safe School Walking Conditions

Hi Jeff,

Attached is the exhibit we prepared for the County, and an entry exhibit showing the proposed sidewalk improvement.

Thanks,

Savanna Nagorski, MS
ESM Consulting Engineers, LLC
www.esmcivil.com

From: Miles, Jeff <jmiles@lwsd.org>
Sent: Tuesday, April 16, 2019 10:15 AM
To: Savanna Nagorski <Savanna.Nagorski@esmcivil.com>
Subject: RE: Gunshy Manor Preliminary Plat, Safe School Walking Conditions

Hi,

Would it be possible to get a diagram of the proposed area and improvements, it sounds good I would just like to see a visual.

Thanks
Jeff

From: Savanna Nagorski <Savanna.Nagorski@esmcivil.com>
Sent: Tuesday, April 16, 2019 10:06 AM
To: Miles, Jeff <jmiles@lwsd.org>
Cc: William "Buff" Nelson <buffnelson@nelrem.com>; Eric LaBrie <eric.labrie@esmcivil.com>
Subject: RE: Gunshy Manor Preliminary Plat, Safe School Walking Conditions

***** External Email Warning!** This email originated from outside of Lake Washington School District. Use caution responding or opening attachments and links. ***

Hi Jeff,

We've received County comments on the proposed Gunshy Manor project and will be submitted revisions within a couple weeks. It'd be great if we can provide them with your approval of the proposed bus stop access for the site.

The main entrance will be adjacent to the existing bus stop on NE Union Hill Road and frontage improvements, including a sidewalk, are proposed to meet County standards and provide a safe walking and waiting area for students.

Please let us know if this is acceptable. Thank you for your time!

Thanks,

Savanna Nagorski, MS
ESM Consulting Engineers, LLC
www.esmcivil.com

From: Eric LaBrie <eric.labrie@esmcivil.com>
Sent: Monday, February 25, 2019 7:50 AM
To: jmiles@lwsd.org
Cc: Savanna Nagorski <Savanna.Nagorski@esmcivil.com>; William "Buff" Nelson <buffnelson@nelrem.com>
Subject: Gunshy Manor Preliminary Plat, Safe School Walking Conditions

Hi Jeff,

It's been quite a while since our last correspondence regarding providing safe school walking conditions for future students of the Gunshy Manor preliminary plat, located on the south side of NE Union Hill Road, just east of 199th Ave NE (see attached). We anticipate receiving County comments in the near future and would like to verify that the attached safe walking exhibit meets the requirements of the district and answer any questions you may have.

Will you please respond to let me know you received this message and when we might expect to hear back from you?

Thank you very much for your attention to this matter,

ERIC LABRIE, A.I.C.P.
President
eric.labrie@esmcivil.com

ESM Consulting Engineers, LLC
www.esmcivil.com
Federal Way | Everett

33400 8th Avenue S, Suite 205
Federal Way, WA 98003
Tel: 253.838.6113 office
206.491.3415 cell
253.944.1503 direct

Civil Engineering | Surveying | Land Planning | Landscape Architecture | GIS

This message and its contents may contain confidential or privileged information. If this message was not intended for you, or if you received it in error, please inform the sender by email and delete this message and all related messages and attachments. The copying, use or distribution of information or materials in this message is strictly prohibited for unintended recipients.

DISCLAIMER:

Lake Washington School District Confidentiality Notice: This email message, including any attachments, may contain confidential and privileged information. Any unauthorized review, use, disclosure, or distribution of privileged information, including information protected by Family Educational Rights and Privacy Act (FERPA) or other provision of law, is prohibited. If you are not the intended recipient, please contact the sender by e-mail and destroy all copies of the original message.